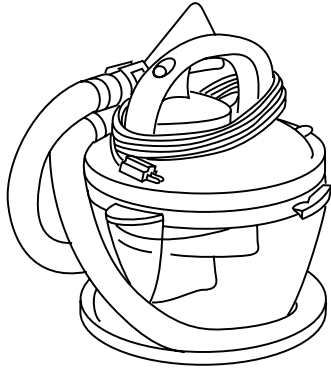


HOOVER® SteamVac Compact Spot Cleaner Jr.™



ENGLISH → pp. 1-7
 ESPAÑOL → pág. 8-14
 FRANÇAIS → p. 15-22



Owner's Manual

Review this manual before operating compact spot cleaner.

Record and Retain

This HOOVER compact spot cleaner is designed for cleaning small carpeted areas, furniture, stairs and spills on bare-floors.

The model and serial numbers are located on the data label near the back of the handle.

For your personal records, please enter the COMPLETE model and serial numbers in the spaces provided and retain this information.

Your compact spot cleaner is model _____ and has serial number _____

It is suggested that you attach your sales receipt to this owner's manual. Verification of date of purchase may be required for warranty service of your Hoover product.

Index

Important safeguards.....	2
Unpacking cleaner.....	2
Compact spot cleaner description.....	2
How to use	
ON-OFF switch.....	3
Filling the clean solution tank.....	3
Emptying the recovery tank.....	3
Automatic shut-off.....	3-4
Cleaning carpet and carpeted stairs.....	4
Cleaning upholstery.....	4-5
Picking up spills.....	5
After cleaning.....	5-6
If you have a problem.....	6
Lubrication.....	6
Service.....	7
Storage.....	6

Thank you for selecting a HOOVER product.

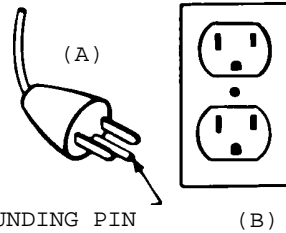
This cleaner was inspected and packaged carefully before being shipped from the factory. If you should happen to need assistance during assembly or operation, call

1-800-944-9200 for an automated referral of authorized service outlet locations (U.S. only) or 1-330-499-9400 (U.S.) or 1-800-263-6376 (Canada) to speak with a Hoover representative.

DO NOT RETURN THIS PRODUCT TO THE STORE.

Grounding Instructions

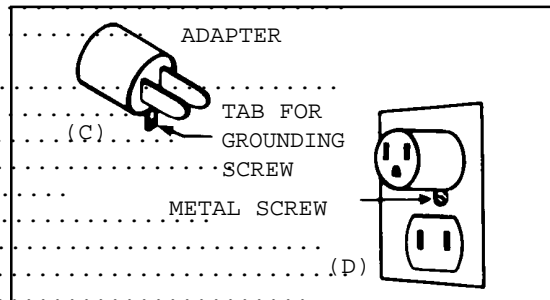
This appliance must be grounded. If it should malfunction or breakdown, grounding provides a path of least resistance for electrical current to reduce the risk of electric shock. This appliance is equipped with a cord having an equipment-grounding conductor and grounding plug (A). The plug must be plugged into an appropriate outlet (B) that is properly installed and grounded in accordance with all local codes and ordinances.



DANGER-

Improper connection of the equipment-grounding conductor can result in the risk of electric shock. Check with a qualified electrician or service person if you are in doubt as to whether the outlet is properly grounded. Do not modify the plug provided with the appliance - if it will not fit the outlet, have a proper outlet installed by a qualified electrician. This appliance is for use on a nominal 120 volt circuit and has a grounding plug that looks like the plug illustrated in sketch (A).

A temporary adapter (C) may be used to connect this plug to a 2-pole receptacle (D) if a properly grounded outlet is not available. The temporary adapter should be used only until a properly grounded outlet (B) can be installed by a qualified electrician. The green colored rigid ear, lug, or the like extending from the adapter must be connected to a permanent ground such as a properly grounded outlet box cover. Whenever the adapter is used, it must be held in place by a metal screw.



NOTE: In Canada, the use of a temporary adaptor is not permitted by the Canadian Electrical Code.

Important Safeguards!

When using an electrical appliance, always follow basic precaution, including the following:

READ ALL INSTRUCTIONS BEFORE USING THIS APPLIANCE

WARNING:

To reduce the risk of fire, electrical shock, or injury:

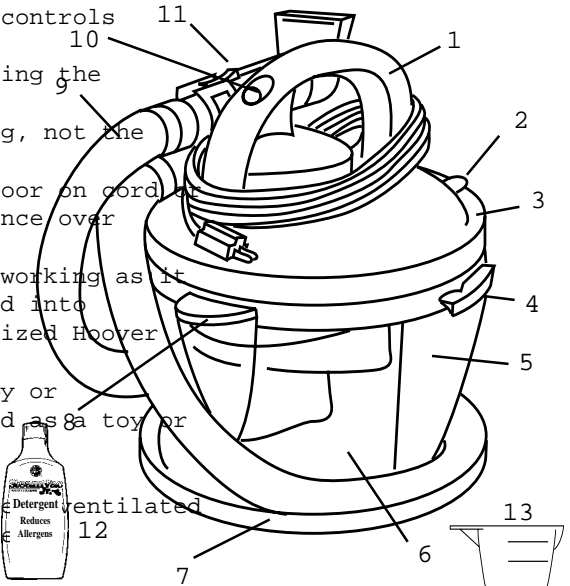
- Use indoors only.
- Use only on surfaces moistened by the cleaning process or small spills. Do not immerse product.
- Connect to a properly grounded outlet only. See "Grounding Instructions".
- Do not clean over floor electrical outlets.
- Do not carry compact spot cleaner while in use.
- Use extra care when cleaning on stairs.
- Use compact spot cleaner only for its intended use as described in the instructions. Use only attachments recommended by The Hoover Company; others may cause hazards.
- The use of an extension cord is not recommended. If an extension cord is absolutely necessary, use at least a 16 gauge wire cord that has a 3-prong grounding type plug and a 3-pole receptacle that accepts the machine plug.
- Unplug compact spot cleaner when not in use. Turn off all controls before unplugging.
- Always disconnect cord from electrical outlet before servicing the compact spot cleaner.
- Do not unplug by pulling on cord. To unplug, grasp the plug, not the cord. Never handle plug or appliance with wet hands.
- Do not pull or carry by cord, use cord as a handle, close door on cord, pull cord around sharp edges or corners. Do not run appliance over cord. Keep cord away from heated surfaces.
- Do not use with damaged cord or plug. If appliance is not working as it should, has been dropped, damaged, left outdoors, or dropped into water, take it to a Hoover Factory Service Center or Authorized Hoover Warranty Service Dealer.
- Close supervision is necessary when any appliance is used by or near children. Do not allow compact spot cleaner to be used as a toy or to run unattended at any time.
- Do not point nozzle tool toward people or pets.
- To assist in reducing drying time, be certain the area is well ventilated when using detergents and other cleaners with this appliance.
- Keep detergents and other cleaners out of children's reach.
- Do not use to pick up flammable or combustible liquids such as gasoline or use in areas where they may be present.
- Do not pick up chlorine bleach, drain cleaner, gasoline or any toxic material with this appliance.
- Do not pick up anything that is burning or smoking, such as cigarettes, matches, or hot ashes.
- Avoid picking up hard, sharp objects with the compact spot cleaner. They may damage the cleaner.
- Keep hair, loose clothing, fingers, feet and all parts of body away from openings and moving parts.
- Do not put any object into openings. Do not use with any openings blocked; keep free of dust, lint, hair, and anything that may reduce air flow.
- To help prevent matting and resoiling, avoid contact with carpets until they are dry. Keep children and pets away from carpets until completely dry.
- Store in a dry place. Do not expose machine to freezing temperatures.

Questions or Concerns?

The Hoover Company wants to quickly resolve any concerns about your cleaner or questions regarding its use. Look on the list provided with the product for your local Hoover Factory Service Center or in the Yellow Pages under "Vacuum Cleaners - Household" for the nearest Authorized Hoover Warranty Service Dealer (Dept) or call: 1-800-944-9200 for an automated referral of authorized service outlet locations (U.S. only) or 1-330-499-9400 (S.) or 1-800-263-6376 (Canada) to speak with a Hoover representative. DO NOT RETURN THIS PRODUCT TO THE STORE OR SEND IT TO NORTH CANTON FOR SERVICE.

Unpacking

Unpack Hoover compact spot cleaner from the carton. Remove and dispose of the cardboard packing. With the cord wrapped around the handle, the cleaner will look like the drawing below.



1. Carrying handle with cord wrapped around handle for storage
2. Fill cap
3. Lid and motor housing
4. Lid latches on each side of tank
5. Recovery tank holds dirty solution
6. Recovery tank holds dirty solution
7. Base tray and nozzle
8. Hose and nozzle
9. Spout for emptying recovery tank
10. ON-OFF switch
11. Trigger release cleaning solution from solution tube
12. 'SteamVac Jr.' Detergent
13. Measuring cup for measuring detergent

This compact spot cleaner intended for household use.

Operate cleaner only at voltage specified on data label on back of handle.

Save these instructions!

How to use

Before you begin cleaning

a. Vacuum thoroughly. For carpet, use a vacuum cleaner with an agitator for best results. Vacuum upholstery with a vacuum cleaner with cleaning tool attachments. Use a crevice tool to reach into tufts and folds. Do not use the 'SteamVac Jr.' compact spot cleaner as a dry vacuum cleaner.

b. For upholstery, check cleaning code. Use only 'SteamVac Jr.' compact spot cleaner only if the upholstery fabric is marked with a "W" (for "wet" clean) or "S/W" (for "solvent/dry" or "wet" clean). Do not clean fabric marked ("solvent/dry" clean only). If your upholstery does not have a code, seek professional assistance.

c. Test for colorfastness. Mix detergent and water according to the instructions under "How to fill solution tank." Wet a white absorbent cloth with the solution. In a small, hidden area, gently rub the surface with the dampened cloth. Wait ten minutes and check for color removal or bleed with white paper towel or cloth. If surface has more than one color, check all colors.

d. Pretreat spots with HOVER® PreCleaner Test* - PreCleaner for colorfastness by first spraying it on a hidden area; wait ten minutes and blot with white paper towels or cloth.

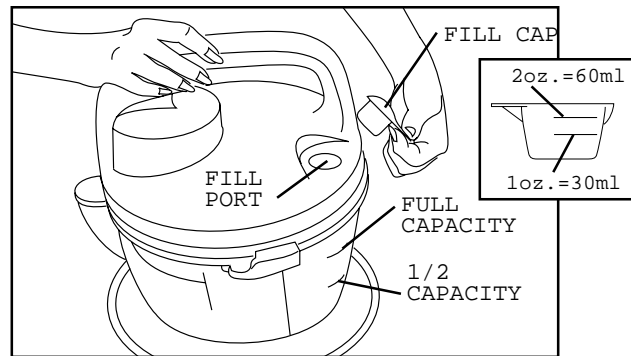
If no color change is visible, spray PreCleaner onto spots. Wait at least ten minutes. Use your 'SteamVac Jr.' compact spot cleaner to pick up PreCleaner and spot. Repeat until spot is removed; carefully scrub with a household scrub brush if necessary. Do not saturate carpet or upholstery with PreCleaner.

No cleaning solution removes all stains from all carpets. Stain removal varies with the type of spill, time elapsed before removal, carpet material and carpet type.

*Available at additional cost if not included with your model. (Can also be ordered from the Purchase Envelope enclosed with this cleaner.)

How to fill solution tank

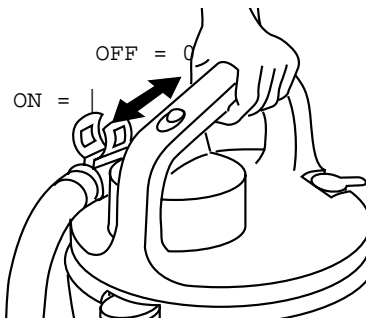
Disconnect cleaner from electrical outlet.



Remove fill cap. For a full tank cleaning solution, pour 2 oz. / 60 ml of detergent into measuring cup provided. Pour detergent into tank through fill port and fill tank to "full capacity" (1/2 gallon) with hot tap water.

For a half tank use 1 oz. / 30 ml detergent and fill tank to "1/2 capacity" (1 quart).

ON/OFF switch



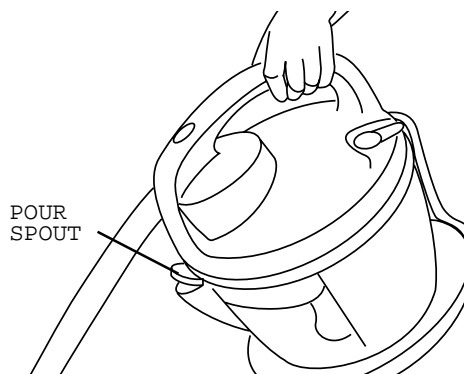
Plug cleaner into a properly grounded outlet.

Push switch forward to turn cleaner ON (I). Pull switch backward to turn cleaner OFF (O).

How to empty recovery tank

When the recovery tank is full of dirty solution, the automatic "shut-off" will engage and the tank must be emptied.

Turn cleaner off and disconnect from electrical outlet.

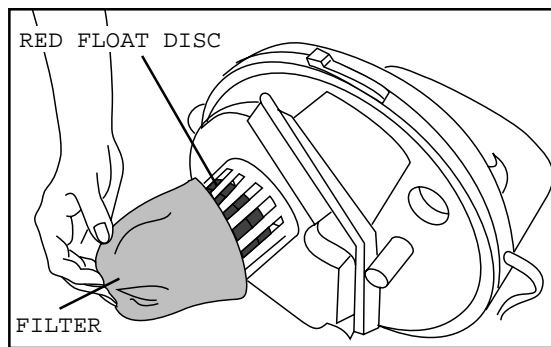


Empty tank by pouring dirty solution from pour spout.

Note: Check the recovery tank and empty it when it appears full even if the automatic shut-off has not engaged. Check solution tank also; it may need to be refilled.

Continued →

Automatic "shut-off"



When the recovery tank is full, the automatic "shut-off" mechanism will turn off the cleaner suction.

When this happens, the red float disk will rise to the top of the cleaner lid (see illustration). The cleaner will no longer pick up dirty solution and the motor sound will become noticeably higher in pitch.

When this happens, turn cleaner off and empty recovery tank through the pour spout before continuing use.

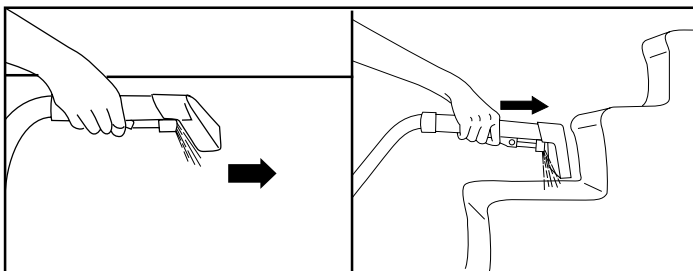
NOTE: Check recovery tank of Empty tank when it appears full even if the automatic shut-off has not engaged. Check clean solution tank also; it may need to be refilled.

Cleaning carpet and carpeted stairs

With dry hands, plug cleaner into a properly grounded outlet and turn cleaner ON.

To prevent cleaner from falling, use extra caution when cleaning on stairs.

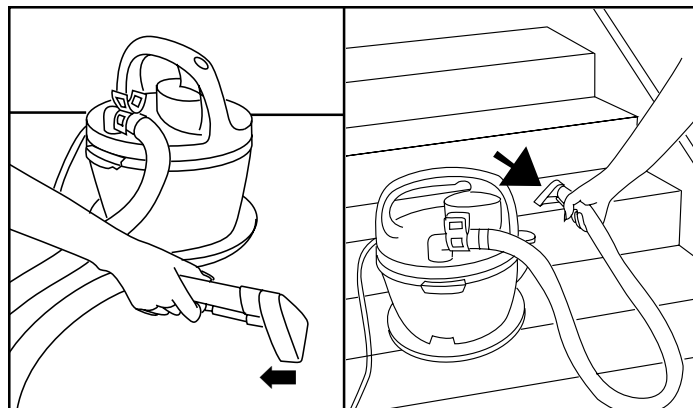
Do not point nozzle at people or pets.



With cleaner placed on a stable surface, pre-spray a small area of carpet or carpeted stair by holding the nozzle about one inch above the carpet and push it forward while pressing the trigger (equals one wet stroke).

Position nozzle at the edge of the carpet area or against the riser and slightly press nozzle into carpet pile. Press the trigger and pull the nozzle slowly over the carpet (second wet stroke). Release trigger at end of stroke.

The built-in brush on the nozzle can help provide the scrubbing action some spots may need for removal. Without pressing trigger, scub the spot with the nozzle using a back and forth motion.



Lift nozzle, and position it at the edge of the carpet area or against the riser. Pull nozzle slowly over carpet without pressing trigger (dry stroke).

It is best to alternate wet and dry strokes as described above. End with more dry strokes to aid in faster drying of carpet.

Overlap strokes by 1/2 inch to help prevent streaking.

To avoid saturating carpet, do not use more than 4 wet strokes over any one area. Always end with dry strokes.

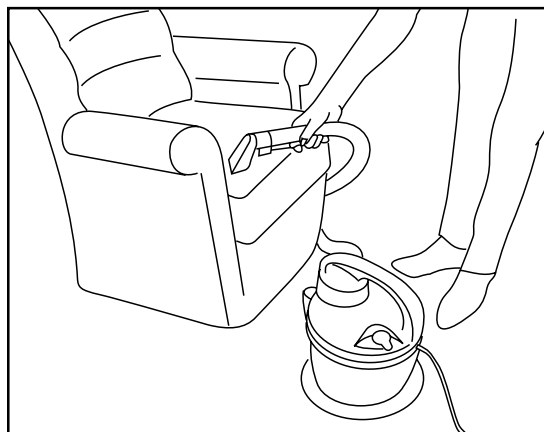
NOTE: Check the recovery tank for fullness Empty tank if it appears full even if automatic shut-off has not engaged.

If additional cleaning is necessary, wait until the carpet is completely dry before using the nozzle again.

Cleaning upholstery and automobile interiors

Be sure to check the cleaning code on your upholstery. Use the cleaner only on upholstery marked "W" or "W/S".

With dry hands, plug cleaner into a properly grounded outlet and turn cleaner ON.



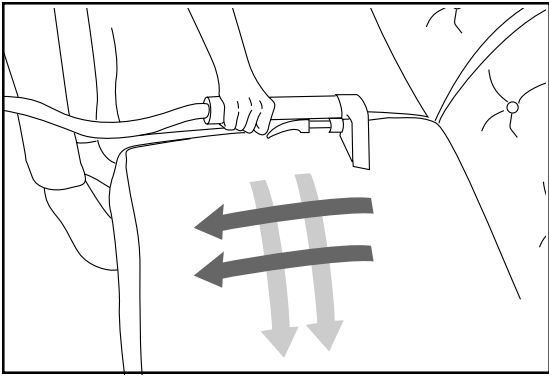
Gently press the nozzle onto the fabric. Press the trigger and slowly pull the nozzle over the fabric.

The built-in brush on the nozzle can help provide the scrubbing action some spots may need for removal. Without pressing trigger, scub the spot with the nozzle using a back and forth motion. Follow with dry strokes (without pressing trigger).

Overlap strokes by 1/2 inch to help prevent streaking.

Make additional strokes without pressing the trigger to remove more moisture.

To clean in corners or creases, lift the nozzle 1/2 inch from the fabric and press the trigger. Without pressing the trigger, vacuum up the solution with the nozzle.



For heavily soiled areas, it may be necessary to repeat the cleaning process. Make crisscrossing strokes to the original pattern; overlap each pass.

Make no more than 2 passes with the solution over any one area to prevent overwetting and damage to fabric.

NOTE: Check the recovery tank for fullness often. Empty tank if it appears full even if automatic shut-off has not engaged.

If additional cleaning is necessary, wait until the upholstery is completely dry before using the nozzle again.

Picking up spills

Your cleaner may also be used to pick up small liquid spills on carpet, upholstery or bare floors. Depending on the amount of the spill, it may be necessary to empty the recovery tank often.

For best results, pick up spills immediately by placing the nozzle just above the spill and suction up any residue on top of the carpet or bare floor. If the spill remains, place the nozzle in front of the spill, pull the nozzle very slowly over the spill initially with suction only. Repeat with spray and suction.

Although no cleaning solution can completely remove all spots, they can be treated by following the instructions provided by the manufacturer of the carpet, upholstery or bare floor surface being cleaned.

Do not use the 'SteamVac Jr.' compact spot cleaner to pick up flammable or combustible liquids or chemicals.

After cleaning

a. Allow carpet or upholstery to dry. To help prevent matting and resoiling the carpet, keep children and pets away from surface until it is completely dry.

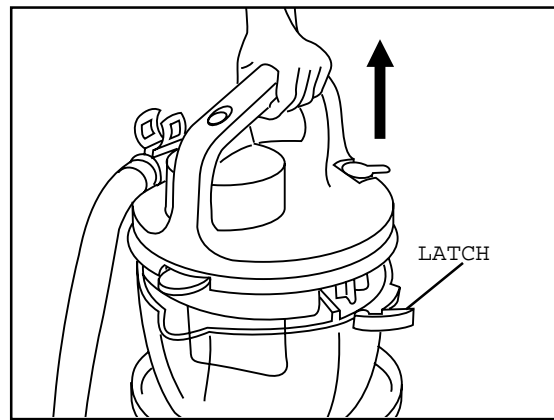
b. Rinse nozzle and hose by filling sink with a small amount of water, turning cleaner ON, and picking the water up with the nozzle.

Drain hose by turning cleaner ON and holding nozzle up for several seconds. Do not press trigger.

Disconnect cleaner from electrical outlet.

Drain solution tube (located inside hose) by placing nozzle below the cleaner, and pressing trigger.

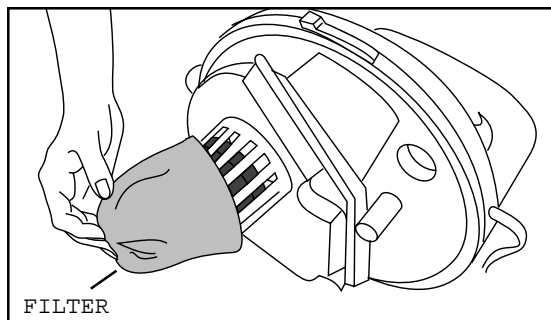
Clean tanks



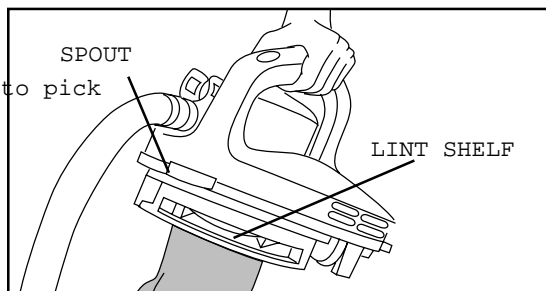
c. Unlatch cleaner lid by pulling latches outward on both sides of cleaner. Lift off lid.

Rinse tanks with clear water and let air dry.

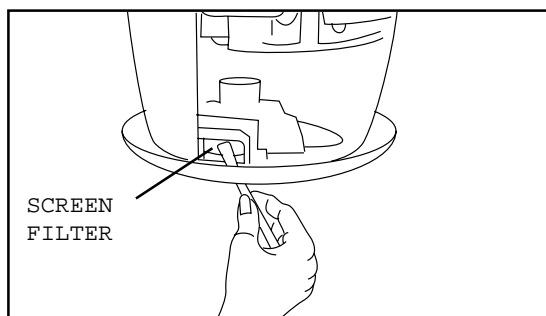
Clean filters



d. Remove debris from recovery tank filter and rinse with clean water. Filter may be removed for cleaning.

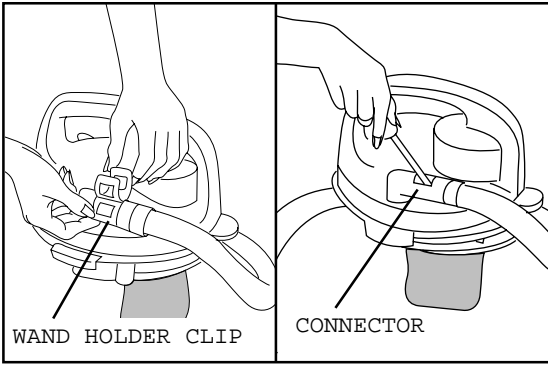


e. Remove any debris from lint shelf on cleaner lid.



f. Remove debris from screen filter located at bottom of cleaner. Be careful not to poke through screen filter when cleaning.

Continued →



g. Occasionally, debris may become lodged on the inside of the hose connector on the top of the cleaner lid.

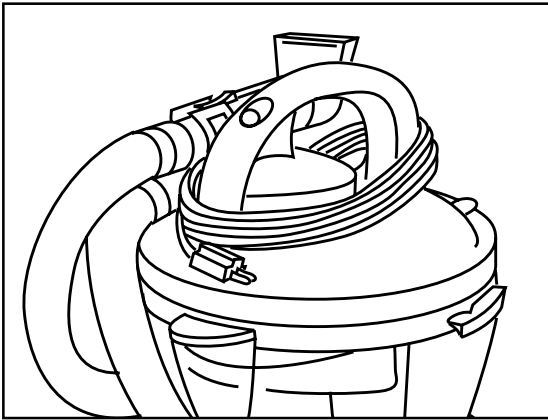
To clean-out hose connector, lift bottom edge of wand holder clip and remove clip. Remove debris. Snap clip back into position.

Allow all parts to air dry before securing cleaner lid to tanks for storage.

Storage

Before storing:

- Empty solution and recovery tanks and thoroughly rinse them with clean water.
- Allow parts to air dry before latching cleaner lid to tanks.



Wrap cord around handle as shown.

Do not store cleaner with solution in tanks.

If you have a problem

If a minor problem occurs, it usually can be solved quite easily when the cause is found. by using the check list below:

Problem: Machine won't run

- Possible cause
- Possible solution
- Not firmly plugged in
- Plug unit in firmly
- No voltage in wall plug
- Check fuse or breaker
- Blown fuse or tripped breaker
- Replace fuse or reset breaker

Problem: Low suction

- Possible cause
- Possible solution
- Recovery tank full/ automatic shut-off engaged
- Empty recovery tank
- Lint on filter(s)/in hose connection on top of cleaner lid
- Clean filter(s)/hose connection (see "After cleaning")

Problem: Clean solution won't dispense

- Possible cause
- Possible solution
- Solution tank empty
- Refill tank

Lubrication

The motor is equipped with bearings which contain sufficient lubrication for the life of the motor. The addition of lubricant could cause damage. Do not add lubricant to motor bearings.

Service

To obtain approved HOOVER service and genuine HOOVER parts, locate the nearest Hoover Factory Service Center or Authorized Hoover Warranty Service Dealer (Depot)

- checking the Yellow Pages under "Vacuum Cleaners- Household" OR-
- checking the list of Factory Service Centers provided with this cleaner OR -
- calling 1-800-944-9200 for an automated referral of authorized service outlet locations (U.S. only).

Do not send your cleaner to The Hoover Company in North Canton for service, this will only result in delay.

If further assistance is needed, contact The Hoover Company Consumer Response Center, North Canton, Ohio 44720 Phone: 1-330-499-9499

In Canada, contact Hoover Canada, Burlington, Ontario L7R 4A8, Phone: 1-800-263-6376.

Always identify your cleaner by the complete model number when requesting information or ordering parts. (The model number appears on the data label near the back of the cleaner handle.)

HOOVER and  are registered trademarks
THE HOOVER COMPANY, NORTH CANTON, OHIO 44720