

Factors to Consider in Selecting a Farm Irrigation System

Kerry Harrison, Extension Engineer

Contents

[Center Pivot Irrigation Systems](#)

[Sprinkler Options for Center Pivots](#)

[Low Pressure Sprinklers](#)

[Medium Pressure Sprinklers](#)

[High Pressure Sprinklers](#)

[Linear Move Irrigation Systems](#)

[Traveling Gun Systems](#)

[Cable-Tow Traveler Irrigation System](#)

[Hose-Pull Traveler Irrigation System](#)

[Solid Set and Permanent Set Irrigation Systems](#)

[Micro-Irrigation Systems](#)

[Drip Irrigation Systems](#)

[Micro-Sprinkler Systems](#)

[Energy for Irrigation](#)

[Water Sources for Irrigation](#)

[Surface Water](#)

[Ground Water](#)

The majority of agricultural irrigation systems in Georgia fit into one of two broad categories: sprinkler irrigation and micro-irrigation. Sprinkler irrigation systems include center pivot, linear move, traveling gun, permanent set and solid set. Micro-irrigation systems include drip (or trickle) irrigation and micro-sprinklers.

No one system is best for every application. Once you decide to install an irrigation system, you must consider several important factors before deciding which system is best for your situation. These factors include:

crop	fuel cost and availability
size and shape of field	labor requirements
water source	initial cost

In some situations, there may be additional considerations such as whether you own the land or are leasing. You may also own some equipment such as a well or pumping unit and wish to adapt the system to this existing equipment. This publication is intended primarily for the farmer who has made the decision to irrigate and is in the process of deciding what type system will best fit into his or her operation.

Center Pivot Irrigation Systems

The center pivot is the most widely used irrigation system on Georgia farms. The center pivot is a self-propelled system that rotates around a central pivot point. The drive mechanism for this system may be water pressure, hydraulic oil or electric motors. Most systems in use today have electric drive systems. The time required for a rotation depends on the system size, pump or well capacity and the amount of water to be applied at each application.

The depth of water applied in a given application is determined by the speed at which the system moves around the field. This speed is set by the operator and is determined by the desired amount of water to be applied to the field. Since the flow rate to the system remains constant, the more water applied the longer it will take the system to complete a rotation.

Since center pivots cover a circular area, they are best adapted to fields that are round or square. Because the majority of fields in Georgia are neither, some part of the field may remain unirrigated. On some irregular-shaped fields, farmers will install part circle systems to cover the maximum amount of area. These systems generally cost more on a per-acre basis since they are not capable of completing a full circle.

Most center pivots have end guns that are large sprinklers located at the outer end of the system. These can be turned on and off as the system moves around the field; they allow the system to water an additional 100 to 150 feet in corners and other irregular parts of the field. Most manufacturers also offer a corner pivot option that consists of an extra span at the end of the system that can swing out and water an additional 300 to 400 feet in the corners of the field.

To determine the number of acres covered by a center pivot, use the following formula:

$$\text{Acres Irrigated} = \frac{3.14 \times R \times R}{43,560}$$

Where: R = wetted radius in feet including end gun

Example:

$$\begin{aligned} \text{System Length} &= 900 \text{ ft.} \\ \text{End Gun wetted distance} &= 100 \text{ ft.} \\ \text{Wetted Radius (R)} &= 900+100 = 1,000 \text{ ft.} \\ \text{Acres Irrigated} &= \frac{3.14 \times 1000 \times 1000}{43,560} \\ &= 72 \text{ acres (assumes end gun is on 100\% of time)} \end{aligned}$$

Provisions can be made to rotate the wheels 90 degrees to facilitate moving the machine from one pivot point to another (towable center pivot). Towable center pivots have proven useful for small irregular-shaped fields. They are most common on small adjoining fields (usually 75 acres or fewer). The major advantage of this system is that it can be used on more than one field, reducing the initial investment per acre.

In the initial design of a center pivot system, it is important that the system be capable of supplying the peak water requirements of the crop. For instance, in Georgia, an irrigation system designed for irrigating corn should be capable of delivering at least 1¼ inches every three days. A system designed using this criterion will be sufficient to supply the water needs of most any crop grown in this area. The required flow rate for a center pivot can be calculated using the following formula:

$$Q = \frac{453 \times A \times D}{F \times H}$$

Where: Q = required system flow rate (gallons per minute or gpm)

A = total area irrigated by system (acres)

D = depth of water applied per irrigation (inches)

F = irrigation frequency (days)

H = hours of operation per day (hours)

Example: You want a 72-acre system to apply 1¼ inches every 3 days operating 20 hours per day.

$$Q = \frac{453 \times 72 \times 1.25}{3 \times 20} = 680 \text{ gpm}$$

Sprinkler Options for Center Pivots

A large number of sprinkler package options are available for center pivots. You may receive conflicting information as to which option best fits your situation, and the choices can be confusing.

The purpose of a sprinkler is to take water from the source (such as the pivot mainline) and distribute the water uniformly over an area in droplet form. In order to cover a large area, a sprinkler must throw water a considerable distance. This requires pressure that translates into fuel consumption at the pump. A reduction in pressure reduces the energy (horsepower) requirements of the system.

As pressure decreases, the area covered also decreases. Thus, as the pivot passes a certain point in the field, if the wetted radius of the sprinklers is decreased, then the intensity of water application must increase to apply a given amount of water. If the application rate exceeds the intake capacity of the soil, runoff will occur, possibly causing erosion.

Sprinkler packages are available with a variety of operating pressures ranging from 1 pound per square inch (psi) to 100 psi. The lower pressure systems require less energy to operate, but you must ensure that you do not exceed the intake capacity of your soil or, if you do, that you incorporate certain cultural practices to prevent runoff.

Low Pressure Sprinklers

Low pressure sprinklers usually operate at pressures between 10 and 30 psi. Most of these fall into a category commonly known as spray nozzles that deliver water in a fixed 360-degree spray pattern. They can be installed upright on the top of the pivot pipeline or inverted on drop pipes below the pipeline. Since they operate at low pressure, the energy requirement is less for this sprinkler compared to most others. These sprinklers have a relatively small wetted radius that results in high application rates.

Use these sprinkler packages only on fields that are relatively flat (slopes less than 5 percent) and have coarse soils (sand, sandy loam, loamy sand) with relatively high infiltration rates. It is also not generally recommended to use low pressure sprinklers on large systems (greater than 100 acres) since larger systems tend to have higher application rates, particularly at the outer end.



Figure 1. Center pivot irrigation system with low pressure spray nozzles.



Figure 2. 360-degree spray nozzles with pressure regulators

Low Energy Precision Application (LEPA)

A special type of low-pressure sprinkler package available for center pivot systems is called *Low Energy Precision Application* or *LEPA*. LEPA systems use ultra-low pressure sprinklers or socks installed on closely spaced drop pipes to apply the water directly on the ground or slightly above the ground surface. The water is often discharged directly in the furrow, so taller growing crops such as corn are typically planted in a circular pattern to accommodate the drop pipes.

This system was developed in the Southern Plains of Texas, and its principal advantages include low energy requirements, low wind drift and low evaporation rates. Avoiding wind drift and minimizing evaporation are primary concerns in the Plains states, where wind velocities are often high and relative humidities low.

The major disadvantage of this system is the extremely high application rates, which will cause erosion on most Georgia soils unless certain practices are implemented. The most common means of overcoming this concern involves furrow-diking and planting in a circle, which is done with a specialized implement that creates a furrow in each row middle and constructs a small dike or dam every few feet. These dikes hold the water in the furrow until it has a chance to infiltrate into the soil. Planting in a circle has its own set of management concerns for each operator.

Medium Pressure Sprinklers

Medium pressure sprinklers operate at pressures between 30 and 60 psi. They have the advantage of energy savings over higher pressure systems and lower applications rates than low pressure systems. Many of these packages use low angle impact sprinklers, though some manufacturers have other types of sprinklers that fall into this category. These sprinklers are being used widely on fields that are not suited to low pressure systems.



Figure 3. Center pivot irrigation system with medium pressure impact sprinklers

High Pressure Sprinklers

High pressure sprinklers operate at a pressure greater than 60 psi. They require the greatest amount of energy to operate and offer the lowest application rates. High pressure sprinklers were the only type offered on early pivot systems. Today, their use is limited to fields with fine textured soils, fields with slopes exceeding 10-15 percent, and systems that apply wastewater.

Wastewater from livestock lagoons and municipal treatment plants often contain solids that could clog the nozzles on lower pressure systems. Some pivot systems that are required to deliver wastewater with high solids contents have been equipped with extra large sprinklers (big guns) with nozzle openings between $\frac{1}{2}$ inch and $1\frac{1}{2}$ inches. These sprinklers generally require between 60 and 100 psi to operate properly.

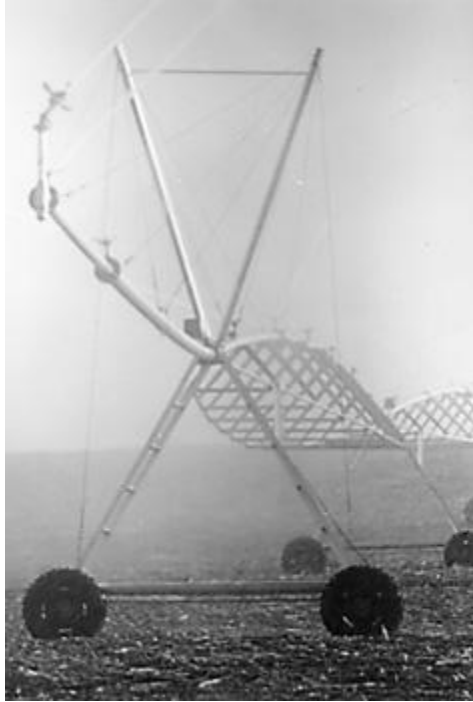


Figure 4. Center pivot irrigation system with high pressure impact sprinklers and end gun

Linear Move Irrigation Systems

Linear move systems are similar in construction to center pivot systems except that, rather than rotating around a fixed end point, the entire system moves laterally across the field. They are designed primarily for use on rectangular shaped fields. In general, for a linear move system to be feasible, the ratio of length to width should be at least 2:1; that is, the irrigation system is no more than one-half as long as the lateral travel distance. The system is best suited to fields with a minimum amount of slope (0-4 percent).

Most systems are supplied with water from a ditch that extends the length of the field or from a large hose that the system drags along as it travels through the field. Ditch-fed systems will have a pumping unit to pump water from the ditch that is carried by the system. The hose-fed systems are supplied from risers on a pressurized mainline. Either type system can be center fed or supplied from one end. The power for the systems usually is supplied from a diesel powered electric generator carried on the main control tower.



Figure 5. Ditch-fed linear move irrigation system

Linear move systems must have a guidance mechanism that guides them in a straight line down the field. Some systems follow an above-ground cable, some follow a buried cable via radio signals, and some are designed to follow a furrow the farmer constructs for that purpose.

Pipelines on linear systems are generally 5 to 8 inches in diameter, depending on the system capacity and lateral length. Tower spacing will vary from 100 to 200 feet. An overhang may be used to extend the coverage beyond the last tower, and an end gun may be used on one or both ends. Some farmers choose not to use an end gun due to the fact that they usually do not apply the water uniformly. Sprinkler package options for linear move systems are basically the same as for center pivots.

The linear move system has limited application in much of the Southeast; but in the Coastal Plains, where natural slope is minimal and fields are relatively large, they may be comparable in cost to the center pivot system. Their main advantage is on rectangular shaped fields where a pivot system would leave large areas unirrigated in the corners of the field. These systems generally do, however, require more maintenance than a center pivot because of the more sophisticated guidance system. They also require more labor to operate. This is especially true of the hose-fed systems.



Figure 6. Hose-fed linear move irrigation system

Traveling Gun Systems

Traveling gun systems consist of a large sprinkler (big gun) mounted on a wheeled cart that is mechanically moved across the field, spraying water. The big guns typically discharge between 100 and 600 gpm and will irrigate a radius of from 80 to 250 feet. There are two types of traveling gun systems: cable-tow travelers and hose-pull travelers.

Cable-Tow Traveler Irrigation System

A cable-tow traveler consists of a large sprinkler mounted on a gun cart and a large, flexible hose, one end of which is attached to the gun cart and the other end to a pipe supplying water from the water source. The machine propels itself through the field by winding a steel cable around a drum or pulley mounted on the gun cart. Power to propel the cable winch may be supplied by a water motor, water piston, water turbine or auxiliary engine. The depth of water application is varied by varying the speed of the cable winch.

Hose sizes are available in diameters from 2½ to 6 inches. Typical lengths available range from 330 to 1,320 feet. The maximum length of run is twice the length of the hose, assuming the hose is connected to the supply pipe in the center of the travel lane. The cable-tow hose is flat when not in use and is stored by winding it on a hose reel.

The cable used to propel the machine is a multi-strand, high strength aircraft type. It must be attached to an immovable object at the edge of the field. A tractor can be used for this purpose or you can install a "dead-man" at the end of each travel lane.



Figure 7. Cable-tow traveler irrigation system

The cable-tow traveler is a versatile machine and can be used on a variety of crops and field sizes and slopes. For most crops (except low growing crops like peanuts), an alleyway is required for the machine. This alley or travel lane may be as little as 6 feet wide for smaller machines or as

much as 16 feet wide for larger machines. Clear the travel lane of rocks and other abrasive materials that could damage the hose. Typical travel lane spacings are given in Table 1.

Table 1. Some Performance Characteristics for Cable-Tow Traveler Irrigation System								
Hose Size		Max Travel Distance	Maximum Capacity		Sprinkler Pressure	Typical Lane Spacing	Area Covered Per Pass	Maximum Hose Pull Range
Diam. (in.) x Length (ft.)		(ft.)	(gpm)	(acres)	(psi)	(ft.)	(acres)	(lbs.)
2½	330	660	165	33	60-70	180	2.1	650-1,000
2½	500	1,000	165	33	60-70	180	4.1	1,000-1,400
2½	660	1,320	165	33	60-70	180	5.5	1,300-1,900
3	330	660	250	50	70-80	210	3.2	1,000-1,500
3	660	1,320	250	50	70-80	210	6.4	2,000-3,000
3½	660	1,320	375	75	80-90	240	7.3	3,000-4,000
4	660	1,320	535	107	90-100	300	9.1	3,500-5,000
4	1,320	264	535	107	90-100	300	18.2	7,000-10,000
4½	660	1,320	730	145	90-100	300	9.1	4,000-6,000
4½	990	1,980	730	145	90-100	300	13.6	6,000-9,000
4½	1,320	2,640	730	145	90-100	300	18.2	8,000-12,000
5	660	1,320	960	192	100-120	330	10	5,000-7,000

Hose-Pull Traveler Irrigation System

The hose-pull traveler has four main components: a large reel mounted on a two- or four-wheel cart, a gun cart, a large volume gun-type sprinkler mounted on the gun cart, and a large semi-rigid polyethylene hose. The trailer mounted hose reel is parked at the end or in the middle of a travel lane. Water is fed through the hose to the sprinkler cart. The sprinkler cart is pulled along by the hose as the hose is wound onto the trailer-mounted hose reel. The hose reel is driven by a turbine, water bellows, water piston or auxiliary engine.

Hose sizes available range from 2 to 5 inches inside diameter. The length varies from 600 to 1,250 feet. These units use a large reel to wind the hose and, therefore, have a high profile, with some of the larger machines being as much as 12 feet high. This height tends to make the unit top-heavy. Always be careful when transporting the machines to prevent them from tipping over.

Design and operation is similar to the cable-tow traveler. The following comparisons can be made between the cable-tow traveler and the hose-pull traveler:

- The hose-pull traveler can be moved in a shorter length of time because there is no hose to reel in and no cable to unwind.

- The hose-pull traveler will require slightly more pressure to operate at the same gpm and hose length because the friction loss through the hose and drive mechanism is usually greater.
- The hose-pull traveler is usually more expensive, but it may be capable of irrigating more acreage because less time is required to reposition it.
- Only the amount of hose that is needed must be wound off the hose-pull traveler, whereas all the hose of the cable-tow machine must be wound off the reel and stretched out so water can flow through the hose. This makes the hose-pull machine easier to use on short runs.
- The hose-pull traveler does not require a separate anchor such as a tractor or earth anchor to which the cable is attached.
- The hose on the hose-pull machine is pulled in a relatively straight line. On the cable-tow machine, the hose is pulled in a loop. In areas with obstructions, this could cause more hose damage on the cable-tow machine.
- A travel lane is not required for the hose of the hose-pull machine. Except in low-growing crops, a travel lane is required for the cable-tow machine.

Both systems use a large sprinkler that requires a relatively high operating pressure -- 80 psi at the gun. Since pressure is lost traveling through the hose, mainline and drive mechanism, the pump operating pressure is usually high -- as high as 150 psi on a typical 550 gpm machine. This requires more horsepower and thus more energy consumption than a comparable center pivot system. Also, labor requirements for traveling gun systems are considerably higher than for a center pivot system.



Figure 8. Hose-pull traveler irrigation system

Table 2 gives the inches of water applied by traveling gun sprinkler systems based on sprinkler output, lane spacing and travel speed.

Table 2. Inches of Water Applied by Traveling Sprinklers

GPM	Lane Spacing (ft.)	Travel Speed, Inches/Minutes									
		6	12	18	24	36	48	60	72	96	120
50	105	1.5	0.8	0.5	0.4	-	-	-	-	-	-
	155	1	0.5	0.3	0.3	-	-	-	-	-	-
100	130	2.5	1.2	0.8	0.6	-	-	-	-	-	-
	190	1.7	0.8	0.6	0.4	-	-	-	-	-	-
150	145	3.3	1.7	1.1	0.8	0.6	0.4	0.3	-	-	-
	215	2.2	1.1	0.7	0.6	0.4	0.3	0.2	-	-	-
200	160	-	2	1.3	1	0.7	0.5	0.4	-	-	-
	235	-	1.4	0.9	0.7	0.5	0.3	0.3	-	-	-
250	175	-	2.3	1.5	1.1	0.8	0.6	0.5	-	-	-
	260	-	1.5	1	0.8	0.5	0.4	0.3	-	-	-
300	180	-	2.7	1.8	1.3	0.9	0.7	0.5	0.45	-	-
	265	-	1.8	1.2	0.9	0.6	0.5	0.4	0.3	-	-
400	200	-	3.2	2.1	1.6	1.1	0.8	0.6	0.5	0.4	-
	300	-	2.1	1.4	1.1	0.7	0.5	0.4	0.35	0.27	-
500	225	-	3.6	2.4	1.8	1.2	0.9	0.7	0.6	0.45	0.3
	330	-	2.4	1.6	1.2	0.8	0.6	0.5	0.4	0.3	0.2
600	240	-	-	2.7	2	1.3	1	0.8	0.67	0.5	0.4
	365	-	-	1.8	1.3	0.9	0.7	0.5	0.44	0.33	0.26
700	250	-	-	3	2.2	1.5	1.1	0.9	0.75	0.56	0.45
	375	-	-	2	1.5	1	0.8	0.6	0.5	0.37	0.3
800	260	-	-	3.3	2.5	1.6	1.2	1	0.82	0.62	0.5
	385	-	-	2.2	1.7	1.1	0.8	0.7	0.56	0.42	0.33
900	300	-	-	-	2.4	1.6	1.2	0.96	0.8	0.6	0.5
	360	-	-	-	2	1.3	1	0.8	0.7	0.5	0.4
1,000	330	-	-	-	2.4	1.6	1.2	0.97	0.8	0.6	0.5
	400	-	-	-	2	1.3	1	0.8	0.7	0.5	0.4

$$\text{Depth of Application} = \frac{19.26 \text{ GPM}}{\text{Lane Spacing (ft.)} \times \text{Travel Speed (In./Min.)}}$$

Solid Set and Permanent Set Irrigation Systems

Solid set irrigation systems consist of portable above-ground aluminum pipe with sprinklers spaced at specific intervals along the pipe. Permanent set systems consist of buried pipes (usually PVC plastic) with evenly-spaced sprinklers mounted on risers. These systems are typically used on small acreages and/or crops that have a high cash value such as sod. Permanent set systems are also frequently used as under-tree sprinkler systems on pecans and as overhead systems for frost/freeze protection on apples, peaches, blueberries and strawberries.

Usually impact sprinklers are used that can be either single nozzle or double nozzle. Spacing will vary between sprinklers depending on sprinkler size and nozzle size. Typical spacings are in the 40 to 60 feet range, although large volume gun type sprinklers may be spaced as much as 250 feet apart.

Labor requirements for solid set systems can range from low to high, depending on how much pipe is available and how often the sets must be moved. Permanent set systems require very little labor and can easily be automated. Permanent set systems are also one of the most expensive in terms of initial cost per acre.



Figure 9. Permanent set sprinkler irrigation system

Micro-Irrigation Systems

There are many variations of micro-irrigation, but they all fall under two general categories: drip (or trickle) irrigation and micro-sprinkler irrigation. In general, micro-irrigation systems distribute water uniformly to a crop via low volume, low pressure output devices that control the rate of water output. Examples of such devices include drip emitters, drip tape and micro-sprinklers. Advantages of micro-irrigation over other types include:

- water conservation (use to ½ less water compared to other methods)
- energy efficient
- fewer weed problems since systems do not generally wet the entire ground surface
- area between rows remains drier, facilitating spraying, harvesting and other cultural operations
- can be used for fertigation
- reduced labor compared to some other methods
- can be easily automated

Drip Irrigation Systems

Drip irrigation was first used in Georgia in the mid-1970s primarily on orchard crops such as pecans, peaches and blueberries. It is currently the most popular method used on permanent crops such as these. It is also widely used in ornamental nurseries, and a different form of drip irrigation is also being used on vegetables and strawberries grown on plastic mulch. Drip irrigation systems can be categorized into either "point source" or "line source" type systems.

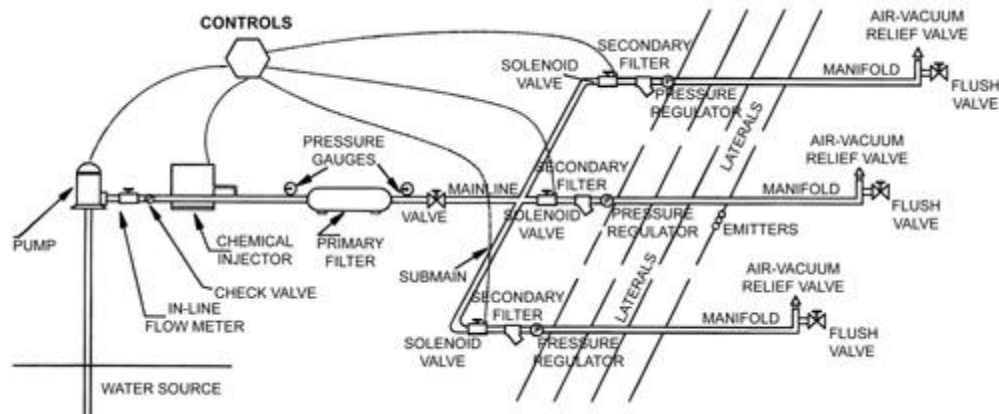


Figure 10. Components of typical drip irrigation system

Most orchard crops and other permanent type crops use what is commonly referred to as *point source emitters*. These are output devices that are generally attached to a ½-inch to ¾-inch polyethylene supply tubing. Output rates for point source emitters are generally ½, 1 or 2 gallons per hour. The number of emitters per plant will vary from 1 to 16, depending on the type and size of the plant being watered. For example, a mature peach tree might require two 2-gallon per hour emitters whereas a mature pecan tree might require twelve 2-gallon per hour emitters.

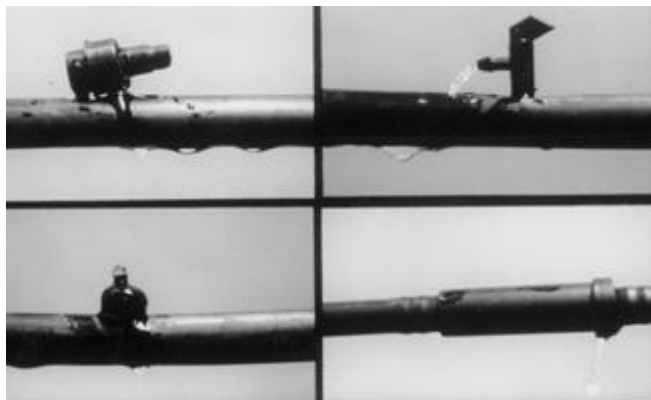


Figure 11. Examples of point source emitters

These systems are usually designed to operate every day during the growing season when the weather is dry. They should supply the daily water needs of the crop. Systems are generally

designed so any one zone will not operate more than 12 hours a day. This prevents creating a permanent saturated soil condition that could damage roots.

Point source emitters and supply lines may be installed on the ground surface or buried a few inches beneath the surface. On widely spaced crops such as pecans, the emitter lines are usually buried to prevent physical damage to the system and to facilitate field operations such as spraying and harvesting.

A different type of drip irrigation is increasingly being used on high cash value crops such as tomatoes, peppers and strawberries. This system uses what is sometimes called a *line source emitter* or *drip tape*. This product consists of a thin-walled polyethylene tape with discreet outlet points built in. The outlets may be anywhere between 4 inches and 24 inches apart. Typical outlet spacings for vegetables and strawberries are 9 inches and 12 inches. Water output rates are between 0.2 and 0.5 gallons per minute per 100 feet of tape. With outlets spaced so closely together, the end result is a continuous wet strip that makes this product ideal for watering rows of closely spaced crops. Wall thicknesses for the tape can be anywhere between 4 mils and 20 mils, with 8 to 10 mils being the most common.



Figure 12. Manifold supplying drip irrigation tape under plastic mulch on bell peppers

When used for growing vegetables or strawberries, drip tape is almost always used with a production practice known as *plasticulture*. The crops are planted on a raised bed covered with a plastic mulch. Usually the beds are fumigated to control insects, diseases and weeds. The drip irrigation tape is installed in the center of the bed at the same time the plastic mulch is laid. The drip tape may be installed on top of the bed directly under the mulch or a couple of inches beneath the soil surface to help prevent rodent damage. The drip irrigation tape is used to supply water underneath the mulch. Most growers also inject fertilizer into the system throughout the growing season to provide nutrients in prescription amounts.

Drip tape has also been used widely in Georgia for irrigating blueberries and, to some extent, pecans. On permanent crops such as these, the tape is usually installed 6 to 8 inches deep. Also,

since the tape is expected to last several years on these crops, growers generally use thicker-walled tape -- 15 to 20 mils.

All drip irrigation systems require clean water to prevent clogging of the emitters. For this reason, use a filter on any drip system regardless of water source. On most wells, a fine mesh screen filter is sufficient unless the well pumps large quantities of sand; then a centrifugal sand separator may also be required. Surface water sources generally require a sand media filter to remove suspended solids, algae, etc. Use the sand filter in conjunction with a screen filter installed downstream.

Many systems, particularly those that use surface water, may experience organic growths of algae or bacteria that will eventually clog emitters. These problems can usually be controlled with periodic injections of chlorine into the system. Periodic injections of acid solution may also be required if you experience a build-up of mineral deposits such as calcium or magnesium.

Micro-Sprinkler Systems

Micro-sprinkler systems are very similar to drip irrigation systems except that, rather than discharging water at discrete points, the water is sprayed out through a small sprinkler device. These micro-sprinklers are typically made of plastic and are available in a multitude of flow rates and spray patterns.

One advantage of the micro-sprinklers compared to drip irrigation is that they disperse the water over a larger surface area (3 ft. to 10 ft. diameter). This is especially advantageous on sandy soils where water applied from a drip emitter tends to move vertically downward, which can cause insufficient root volume being irrigated. For this reason, micro-sprinklers are used extensively in south Florida on citrus crops where sandy soils are prevalent.

Micro-sprinklers may also be advantageous over drip irrigation where water quality is a concern. Because they have larger orifices than drip emitters, micro-sprinklers tend to be less prone to clogging. Since the water is sprayed above ground, a farmer can more easily detect when he has a problem.

Micro-sprinklers have been used to some extent in Georgia on pecans and a few other orchard crops such as peaches. Since they must be installed above ground, they may be more prone to physical damage than some types of drip irrigation systems.



Figure 13. Example of a micro-sprinkler

Energy for Irrigation

Most farmers in Georgia use either electricity or diesel engines to supply power for their irrigation systems. A few use propane, natural gas or gasoline.

Most electric suppliers offer electricity for irrigation purposes at a special rate. Some also require that the power source be interruptible. This means that the power supplier can shut off power for a few hours each day during peak demand periods. This possibility should be taken into account in the initial design of the system.

If electric power is being considered as a power source, be sure to take into account all costs associated with it, such as line extension charges, monthly minimum (stand-by) charges, and the rate you will pay for actual electricity use. These costs vary from one power supplier to another, and you should discuss these costs with the electric supplier before signing a contract.



Figure 14. Large agricultural well with electric motor

An additional consideration is whether or not three-phase power is needed. Depending on where you are located on their distribution system, most power suppliers will limit you to 10 or 15 horsepower on single-phase lines. If more horsepower is required and three-phase power is not available on or near the farm, the cost to construct power lines may be prohibitive.

Many farmers choose electric power whenever possible because of the low maintenance and quiet operation. However, if electric power is not available, or if the cost is prohibitive, diesel powered engines are usually the second choice, especially for systems requiring more than 30 horsepower.

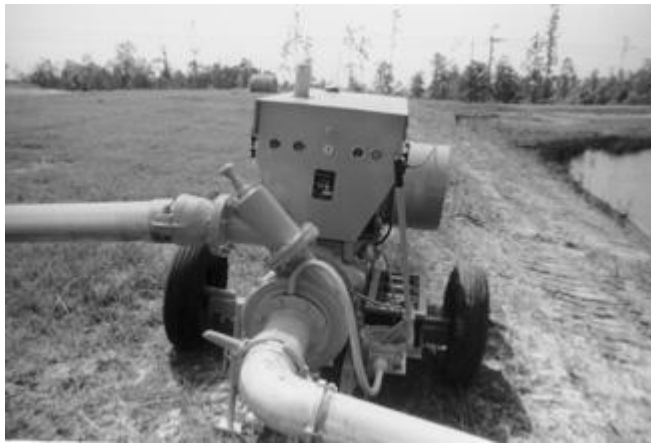


Figure 15. Diesel powered pumping unit on pond

The most important factor in selecting an electric motor or internal combustion engine to supply irrigation water is horsepower. The equation for calculating required horsepower for pumping water is:

$$\text{HP} = \frac{Q \times H}{3960 \times E}$$

Where: Q = system flow rate (gpm)
H = total head in ft. (multiply psi by 2.31 to convert to ft.)
E = operating efficiency of pump
(as a decimal)

Example: A pump must deliver 900 gpm at 300 ft. total head. The pump efficiency is 75 percent. What size electric motor is required?

$$\begin{aligned} \text{HP} &= \frac{900 \times 300}{3960 \times .75} \\ &= 91 \text{ hp. (a 100 hp. motor would be selected)} \end{aligned}$$

In general, electric motors may be selected to operate at 100 percent of their rated horsepower. (They have a built-in overload factor.) However, for internal combustion engines, the general practice is to calculate the horsepower required and then add 15 percent to determine the continuous horsepower rating of the engine. This provides a built-in safety factor to prevent overloading the engine, particularly after it begins to experience some wear.

Water Sources for Irrigation

Water sources for irrigation in Georgia include surface water and ground water. Remember that water for irrigation is needed most when water supplies are at their lowest level. Water sources should, therefore, be adequate to supply water during extended dry periods.

Since 1988, all large agricultural water uses in the state require a water use permit from the Environmental Protection Division, Department of Natural Resources. This law applies to any agricultural water use that averages more than 100,000 gallons per day in any one month (3 million gallons in a month). Any water withdrawal that exceeds 70 gallons per minute will generally require a permit. This law applies to both surface water and ground water withdrawals.

Changes in Agricultural Water Use permits are occurring on almost an annual basis. Anyone considering installing a new water withdrawal (surface or ground) or purchasing property with existing water permits should contact the [Georgia Department of Natural Resources](#) (DNR) water management office for guidance and assistance. Your local county extension agent can help in supplying some printed information and/or the telephone number for the DNR contact person.

Surface Water

Surface water is available in two primary forms: ponds and streams (rivers). Use of streams and rivers is limited in Georgia because they are often not located near the farmland. This is especially true in the southern half of the state, where many of the waterways are surrounded by large swamps.

Farm ponds make up a considerable portion of the irrigation water used in the state.

The required size of an irrigation pond is based on the number of acres to be irrigated. For most areas of Georgia, the general rule is 1 acre-foot of water storage for each acre of land to be irrigated. A 10-acre pond with an average depth of 10 feet would be needed to irrigate 100 acres. This rule assumes no recharge to the pond from ground water or underground springs. If you have a spring-fed pond, adjust the storage capacity of your pond accordingly.

If you have an existing pond that is not adequate to supply all water needs of your irrigation system, you may opt to install a well to pump open discharge into the pond to maintain its water level. The size of the well needed to supplement the pond depends on the storage capacity of the pond and the size of the irrigation system.

Before constructing any new pond, check with appropriate local authorities to determine if permits are required and to ensure that wetlands regulations are not being violated.

Ground Water

The use of ground water for irrigation increased dramatically in Georgia during the 1970s and 1980s. In general, ground water is readily available in the southern half of the state below a line running from Augusta to Columbus. This section of the state is underlain by several aquifer systems consisting of porous materials like limestone, sand and gravel. Depending on location and depth, wells in this part of the state may yield as much as 3,000 gallons per minute.

The majority of the northern half of the state is underlain by igneous rock such as granite and gneiss. These consolidated rock formations are basically impermeable and water can only be obtained where the well intersects cracks and fissures in the rock that contain water. Typical well yields are from 5 to 10 gallons per minute, which is not adequate for most irrigation systems. Occasionally, a lucky landowner will get a well that yields up to 100 gallons per minute, but this is rare. Most irrigators in North Georgia use surface water as their water source.

Most wells in South Georgia that are 6 inches in diameter or larger will require the owner to obtain a withdrawal permit from the state.

Anthony W. Tyson, former Extension Engineer, contributed to earlier versions of this publication.

Bulletin 882/Revised September, 2002

The University of Georgia and Ft. Valley State University, the U.S. Department of Agriculture and counties of the state cooperating. The Cooperative Extension Service, the University of Georgia College of Agricultural and Environmental Sciences offers educational programs, assistance and materials to all people without regard to race, color, national origin, age, sex or disability.

An Equal Opportunity Employer/Affirmative Action Organization Committed to a Diverse Work Force

Issued in furtherance of Cooperative Extension work, Acts of May 8 and June 30, 1914, The University of Georgia College of Agricultural and Environmental Sciences and the U.S. Department of Agriculture cooperating.

Gale A. Buchanan, Dean and Director