

2019
Bee Supply Catalog



FREE SHIPPING
on most orders of
\$200+



Celebrating
85 YEARS



P.O. Box 909 • MOULTRIE, GEORGIA 31776-0909
1-800-333-7677 • FAX (229) 985-0209



Our office today.

Dear Friends,

This year marks Rossman Apiaries 85th year of serving the beekeeping industry! We have provided queens and package bees to beekeepers across America during that time and also Canada until the border closure in the 80's. For over 30 years, we have produced and provided fine cypress beekeeping equipment and now offer a full line of beekeeping supplies. It is our goal for the next 85 years to maintain the same quality products and prompt service that has kept us making beekeepers happy for the past 85 years.

The beekeeping industry is constantly changing, growing and throwing out new obstacles for us all. This year has definitely offered a multitude of changes for the beekeeping industry. Some of these changes have left many beekeepers looking for new reliable sources for their supply needs. It's our ability to adapt to the needs of the beekeeper, while still offering quality goods and great service that has allowed us to develop long lasting relationships with our customers. It's our hope to offer our products and services to as many new beekeeping friends as possible this year. We're excited to help make 2019 your best year in beekeeping ever!!

We wish each one of you a very prosperous year in all of your beekeeping ventures and hope that God continues to bless us all with the ability to keep doing our part to help feed the world!

Trey

Cover photo provided by Kim Kester. Kim has been keeping bees since 2014 and was The American Beekeeping Federation 2016 American Honey Queen. She traveled the country for a Year as the American Honey Queen teaching youth and adults about bees, honey, and pollination. She is currently a Natural Resources Extension Agent for The University of Georgia.



Our original 1935 office.

Now you can order online
www.GAbees.com

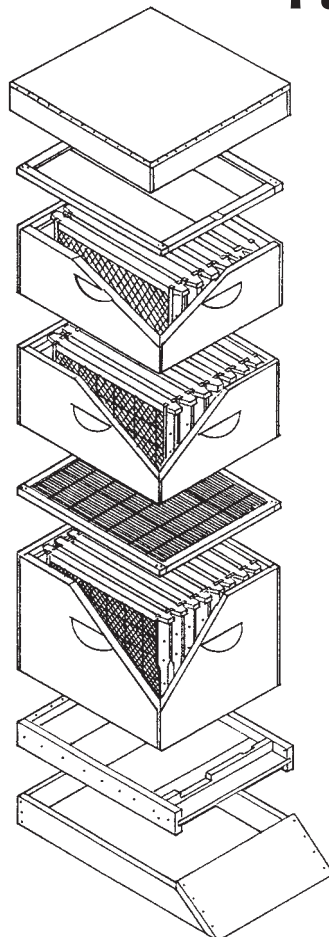


FREE SHIPPING

We offer FREE SHIPPING on orders totaling over \$200.00 before taxes and discounts. FREE SHIPPING only applies to orders being shipped in the contiguous U.S. FREE SHIPPING does not apply to Bees/Queens backorders, returns, exchanges, dealer orders, LTL/Truck line orders, extractors/bottling equipment or containers both glass and plastic. Rossman Apiaries reserves the right to make any further exclusions at any time. Rossman Apiaries also reserves the right to choose the best shipping method for all FREE SHIPPING orders. Customer will be responsible for any and all excess fees/surcharges applied by shipper due to difficult locations or customer special request.

X Notes item does not apply for free shipping.

Parts of a Modern Hive



Telescoping Cover

Galvanized sheet metal fits over sides and top to protect from weather.

Inner Cover

Creates a dead air space for insulation from heat and cold.

Shallow Supers

Used for surplus honey production.

Queen Excluder

Allows worker bees to pass thru, prevents queen from going higher and makes her lay eggs below.

Standard Hive Bodies

Queen lays eggs in these chambers and brood is raised.

Bottom Board

Forms the floor of the hive. Shown with entrance reducer.

Hive Stand

Keeps hive off the ground and provides a landing area for bees.

Cypress Beekeeping Kits



Super Deluxe Hive (unassembled)



This Super Deluxe Hive is a great starter kit. You will have all the equipment you will need at the beginning. Some of the equipment could be used on colonies you already have.

The kit includes:

- 1 - Telescope Cover with Metal, 1 - Inner Cover
- 2 - 6 5/8 Supers with Frames and Plastic Foundation
- 1 - Metal bound Excluder
- 2 - 9 5/8 Supers with Frames and Plastic Foundation
- 1 - Bottom board, 1 - Hive stand
- 1 - Boardman feeder, 1 - Entrance Reducer

M25 (10 Frame)	\$295.00
M25-SB (w/screened bottom)	\$295.00
SHP WT – 52 & 33 lbs	
M25-8 (8 Frame)	\$278.00
M25-8-SB (w/screened bottom)	\$278.00
SHP WT – 50 & 30 lbs	
Add a Beginner's Accessory Kit to your hive	
M45	\$99.00
SHP WT – 8 lbs	

Medium Super Kit (unassembled)

Take a look at this kit with all 6 5/8 supers. You can simplify your beekeeping by using two medium supers for your brood chambers instead of one deep hive body. This allows you to have all interchangeable parts to your hives. Includes:

- 1 - Hive Stand
- 1 - Bottom Board
- 1 - Entrance Reducer
- 1 - Boardman Feeder
- 3 - 6 5/8 Supers with Frames and Plastic Foundation
- 1 - Metal Bound Excluder
- 1 - Inner Cover
- 1 - Telescoping Cover



M101 (10 Frame)	\$257.00
M101-SB (w/screened bottom)	\$257.00
SHP WT – 35, 28 lbs	
M101-8 (8 Frame)	\$244.00
M101-SB8 (w/screened bottom)	\$244.00
SHP WT – 33, 26 lbs	

Medium Super with Frames & Foundation

Add supers to your Medium Super Kit to get the desired amount of supers you want. Super includes 10 - 6 1/4" frames and 10 sheets of 5 1/2" plastic foundation.

M105 (10 Frame)	\$51.00
M105-8 (8 Frame)	\$46.00
SHP WT – 15 lbs	



Deluxe Standard Hive (unassembled)

- 1 - Hive stand, 1 - Hive body
- 10 - 9 1/8" frames
- 1 - Telescope cover with Metal
- 1 - Bottom board
- 1 - Boardman feeder
- 1 - Inner cover
- 1 - Entrance reducer
- 10 - 8 1/2" Plastic foundation
- 1 - 6 5/8" Honey super
- 10 - 6 1/4" Frames
- 10 - 5 5/8" Plastic foundation
- 1 - Queen excluder
- 1 - Set of instructions & nails



M35A (10 Frame)	\$177.00
M35A-SB (w/screened bottom)	\$177.00
SHP WT – 52 lbs	
M35A-8 (8 Frame)	\$169.00
M35A-8-SB (w/screened bottom)	\$169.00
SHP WT – 50 lbs	
Add a Beginner's Accessory Kit to your hive	
M45	\$99.00
SHP WT – 8 lbs	



Deluxe Beginner's Outfit (unassembled)

This deluxe beginners kit is a great starter kit for a beginning beekeeper. It has all the equipment you need to start keeping bees.

The kit includes everything that comes with the Deluxe Standard Hive with:

- 1 - Hat & Veil Combo
- 1 - Pair of leather gloves (specify size)
- 1 - 10" Hive tool
- 1 - First Lessons in Beekeeping
- 1 - 4x7 Smoker
- 1 - 1lb Package of smoker fuel

M48A (10 Frame)	\$276.00
M48A-SB (w/screened bottom)	\$276.00
SHP WT – 52 & 8 lbs	
M48A-8 (8 Frame)	\$268.00
M48A-8-SB (w/screened bottom)	\$268.00
SHP WT – 50 lbs & 8 lbs	



Beginner's Accessory Kit

Perfect for the beginning beekeeper. This kit includes everything you need to get started.

- 1 - Hat & Veil Combo
- 1 - Pair of leather gloves (specify size)
- 1 - 10" Hive tool
- 1 - First Lessons in Beekeeping
- 1 - 4x7 Premium smoke with shield
- 1 - 1lb. package smoker fuel

M45	\$99.00
SHP WT – 8 lbs	



Standard Hive (unassembled)

- 1 - Hive stand
- 1 - Hive body
- 10 - 9 1/8" frames,
- 1 - Telescope cover with Metal
- 1 - Bottom board
- 1 - Boardman feeder
- 1 - Inner cover
- 1 - Entrance reducer
- 10 - 8 1/2" Plastic foundation
- 1 - Set of instructions & nails

M35 (10 Frame)	\$110.00
SHP WT – 40 lbs	
M35-SB (w/screened bottom)	\$110.00
SHP WT – 40 lbs	
M35-8 (8 Frame)	\$105.00
SHP WT – 35 lbs	
M35-8-SB (w/screened bottom)	\$105.00
SHP WT – 35 lbs	
Add a Beginner's Accessory Kit to your hive	
M45	\$99.00
SHP WT – 8 lbs	

Economy Deluxe Standard Hive (unassembled)

- 1 - 9 5/8" Hive body
- 10 - 9 1/8" Frames (grooved)
- 10 - 8 1/2" Plastic foundation
- 1 - Plastic excluder
- 1 - 6 5/8" Super
- 10 - 6 1/4" Frames (grooved)
- 10 - 5 5/8" Plastic foundation
- 1 - Migratory cover
- 1 - Bottom board
- 1 - Large plastic entrance feeder
- 1 - Entrance reducer

M50A (10 Frame)	\$137.00
M50A-SB (w/screened bottom)	\$137.00
SHP WT – 45 lbs	
M50A-8 (8 Frame)	\$128.00
M50A-8-SB (w/screened bottom)	\$128.00
SHP WT – 43 lbs	
Add a Beginner's Accessory Kit to your hive	
M45	\$99.00
SHP WT – 8 lbs	



Assembled Kits



Assembled Deluxe Cypress Hive

This deluxe cypress hive comes fully assembled and ready for bees. It comes with all the woodenware you need to start a beehive.

- 1-Assembled cypress telescoping cover
- 1-Assembled inner cover
- 1-Assembled 6 5/8 cypress honey super
- 10-Assembled 6 1/4 wooden frames w/plastic foundation
- 1-Assembled metal bound queen excluder
- 1-Assembled 9 5/8 cypress hive body
- 10-Assembled 9 1/8 wooden frames w/plastic foundation
- 1-Assembled cypress bottom board
- 1-Cypress entrance reducer
- 1-Boardman feeder

- M23 (10 Frame)\$225.00
- M23-SB (w/screened bottom) 225.00
- M23-8 (8-Frame).....213.00
- M23-8-SB (w/screened bottom)213.00
- SHP WT – 47 lbs

Assembled Deluxe Pine Hive

This deluxe pine hive comes fully assembled and ready for bees. It comes with all the woodenware you need to start a beehive.

- 1-Assembled pine telescoping cover
- 1-Assembled inner cover
- 1-Assembled 6 5/8 pine honey super
- 10-Assembled 6 1/4 wooden frames w/plastic foundation
- 1-Assembled metal bound queen excluder
- 1-Assembled 9 5/8 pine hive body
- 10-Assembled 9 1/8 wooden frames w/plastic foundation
- 1-Assembled pine bottom board
- 1- Pine entrance reducer
- 1-Boardman feeder

- M24 (10-Frame)\$188.00
- M24-SB (w/screened bottom)188.00
- M24-8 (8-Frame).....179.00
- M24-8-SB (w/screened bottom)179.00
- SHP WT – 47 lbs



Cypress Supers (unassembled)

Also available in 8 frame



Deep

9 5/8"



Medium

6 5/8"



Shallow

5 3/4"

ITEM#	SIZE	DESCRIPTION	WEIGHT	CYPRESS SUPERS			
				1-5	6-49	50-99	100+
A1C (10 Frame)	9 5/8	Cypress Select - Deep	9 lbs.	\$28.50	\$27.75	\$27.00	\$26.50
A1C-8 (8 Frame)	9 5/8	Cypress Select - Deep	9 lbs.	28.50	27.75	27.00	26.50
A2C (10 Frame)	9 5/8	Cypress Commercial - Deep	9 lbs.	22.00	21.50	20.75	20.25
A2C-8 (8 Frame)	9 5/8	Cypress Commercial - Deep	9 lbs.	22.00	21.50	20.75	20.25
A5C (10 Frame)	6 5/8	Cypress Select - Medium	6 lbs.	21.75	21.25	20.50	20.00
A5C-8 (8 Frame)	6 5/8	Cypress Select - Medium	6 lbs.	21.75	21.25	20.50	20.00
A6C (10 Frame)	6 5/8	Cypress Commercial - Medium	6 lbs.	17.00	16.50	16.00	15.50
A6C-8 (8 Frame)	6 5/8	Cypress Commercial - Medium	6 lbs.	17.00	16.50	16.00	15.50
A7C (10 Frame)	5 3/4	Cypress Select - Shallow	5 lbs.	20.00	19.50	19.00	18.50
A7C-8 (8 Frame)	5 3/4	Cypress Select - Shallow	5 lbs.	20.00	19.50	19.00	18.50
A8C (10 Frame)	5 3/4	Cypress Commercial - Shallow	5 lbs.	14.75	14.25	14.00	13.50
A8C-8 (8 Frame)	5 3/4	Cypress Commercial - Shallow	5 lbs.	14.75	14.25	14.00	13.50

Select grade is clear with no knots. Commercial grade has knots, but it is a solid knot.

Supers have rabbeted ends. Holes are pre-drilled for ends only.

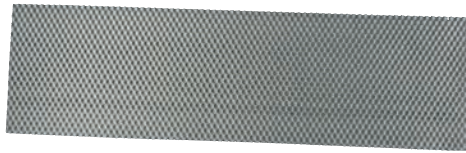
Nails are included with all orders up to 49. Call for prices on 50 or more.

Foundation



Crimp-Wire (Pure Beeswax w/Wire)

Item#	Size	Frame Size	10 pk(A)	Ship Wt.	50 pk(B)	Ship Wt.	25 lb. Box(C)	Ship Wt.
F111	8 1/2"x16 3/4" Deep	9 1/8"	\$13.50	3 lb	\$60.00	9 lb	\$205.00	31 lb
F112	5 5/8"x16 3/4" Medium	6 1/4"	9.50	2 lb	40.50	6 lb	208.00	31 lb
F116	4 3/4"x16 3/4" Shallow	5 3/8"	9.50	2 lb	40.50	8 lb	208.00	31 lb



Cut Comb

Pure beeswax for comb honey.

Item#	Size	Frame Size	10 pk(A)	Ship Wt.	50 pk(B)	Ship Wt.	25 lb. Box(C)	Ship Wt.
F117	5 5/8"x16 3/4" Medium	6 1/4"	\$8.00	2 lb	\$35.00	7 lb	\$210.00	31 lb
F119	4 3/4"x16 3/4" Shallow	5 3/8"	7.25	2 lb	35.00	7 lb	210.00	31 lb



Plastic Sheets with wax Coating

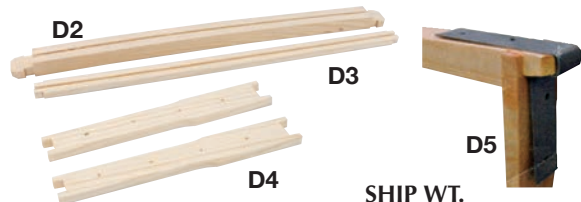
FP300/FP350/FP351 injected molded plastic, raised cell sheet the best plastic foundation.

(Deep is also available in black)

FP300 8 3/8" (Deep)		FP350 5 1/2" (Medium)		FP351 4 3/4" (Shallow)	
Quantity	Price Each	Quantity	Price Each	Quantity	Price Each
1-20	\$1.35	1-20	\$1.25	1-20	\$1.25
21-99	1.25	21-99	1.20	21-99	1.20
100-499	1.15	100-499	1.10	100-499	1.10
500 +	1.10	500 +	1.05	500 +	1.05
100 Sheets Weigh 40 lbs.		100 Sheets Weigh 32 lbs.		100 Sheets Weigh 30 lbs.	

All our frames are made from white pine. For extracting, we have a 3/4" thick wedge or grooved top bar available. Nails not included with orders of 100 or more frames.

Frame Parts



ITEM#	DESCRIPTION	SHIP WT. PER 100	PRICE
D1	Foundation Cleats (wedges)	5 lbs.	.05 ea.
D2	Top Bars (specify wedge or grooved)	20 lbs.	.50 ea.
D3	Bottom Bars (grooved)	5 lbs.	.30 ea.
D4	End Bars (specify size)	5 lbs.	.30 ea.
D5	Frame Savers (Lots of 10)	1 lb.	4.00
D5A	Frame Savers (Lots of 100)	7 lbs.	30.00

Unassembled Frames



C17

ITEM#	SIZE	SHIP WT. PER 10	PRICE EACH
3/4 inch Wedge or Grooved Top Frames			
C17	9 1/8" - Deep	5 lbs. each	1.40 1.20 1.05 .95
C19	6 1/4" - Medium	5 lbs. each	1.40 1.20 1.05 .95
C16	5 3/8" - Shallow	5 lbs. each	1.40 1.20 1.05 .95

Assembled Frames w/ Plastic Foundation

C17A Specify Wedge or Grooved



C19A-B



ITEM#	SIZE	SHIP WT.	PRICE EACH
EACH 1-49 50-99 100-499			
C17A	9 1/8" - Deep	1 lb. each	3.60 3.10 2.80 2.60
C19A	6 1/4" - Medium	1 lb. each	3.50 3.00 2.70 2.50
C17A-B	9 1/8" - Deep Black	1 lb. each	3.60 3.10 2.80 2.60
C19A-B	6 1/4" - Medium Black	1 lb. each	3.50 3.00 2.70 2.50



C12

Deep One-Piece Drone Frames

Our one-piece plastic frame and foundation features a larger cell pattern encouraging the bees to build drone comb. As part of your Integrated Pest Management program for varroa mites, insert one drone frame into each hive. When the bees have capped the cells, place the frame in a plastic bag in the freezer overnight. Remove the frame from the freezer and let it warm to room temperature. Drag your capping scratcher across the cells, breaking them open, then place the frame back in the hive for the worker bees to clean out the dead drones and mites. Repeat the cycle as the bees refill and cap the cells.

ITEM#	SHIP WT. PER 10	PRICE EACH
C12	1 lbs. each	3.50

One Piece Plastic Frame

with Wax Coating



FP200 / FP250 One piece frame and foundation molded together for one long lasting, sturdy unit, never have to assemble frames and foundation again.

FP200 Deep Frames 9-1/8"		FP250 Medium Frames 6-1/4"	
Quantity	Price Each	Quantity	Price Each
1-10	\$2.85	1-10	\$2.60
11-49	2.65	11-49	2.45
50-499	2.30	50-499	2.15
500 +	2.15	500 +	2.00

20 frames per box 18#

20 frames per box 14#

Cypress Tops & Covers

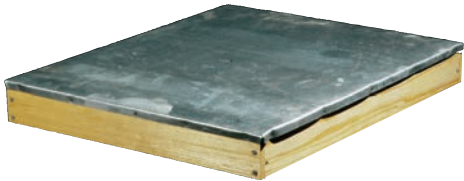
(Available in 8 Frame)



Telescope Covers (unassembled)



ITEM#	DESCRIPTION	SHIP WT.	PRICE EACH	
			1-5	6-49
B4	Cypress Teles. Cover w/o Metal (10 Frame)	7 lbs.	\$23.75	\$23.00
B4-8	Cypress Teles. Cover w/o Metal (8 Frame)	7 lbs.	23.75	23.00



ITEM#	DESCRIPTION	SHIP WT.	PRICE EACH	
			1-5	6-49
B3	Cypress Teles. Cover w/Metal (10 Frame)	10 lbs.	\$31.00	\$30.00
B3-8	Cypress Teles. Cover w/Metal (8 Frame)	10 lbs.	31.00	30.00

Flat Cover (unassembled)



ITEM#	DESCRIPTION	SHIP WT.	PRICE EACH	
			1-5	6-49
B5	Cypress Flat Cov.-Can Use Metal (10 Frame)	5 lbs.	\$14.50	\$13.75
B5-8	Cypress Flat Cov.-Can Use Metal (8 Frame)	5 lbs.	14.50	13.75

Reversible Cover (unassembled)

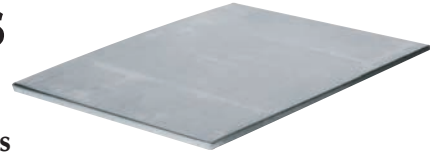


ITEM#	DESCRIPTION	SHIP WT.	PRICE EACH	
			1-5	6-49
B6	Cypress Reversible Cover (10 Frame)	5 lbs.	\$14.50	\$13.75
B6-8	Cypress Reversible Cover (8 Frame)	5 lbs.	14.50	13.75

Migratory Cover (unassembled)



ITEM#	DESCRIPTION	SHIP WT.	PRICE EACH	
			1-5	6-49
B7	Cypress Migratory Cover (10 Frame)	6 lbs.	\$15.00	\$14.50
B7-8	Cypress Migratory Cover (8 Frame)	6 lbs.	15.00	14.50



Metal for Telescope Covers

ITEM#	DESCRIPTION	SHIP WT.	PRICE EACH	
			1-5	6-49
B26	Extra Metal for Telescope Covers (10 Frame)	2 lbs.	\$10.00	\$9.50
B26-8	Extra Metal for Telesc. Covers (8 Frame)	2 lbs.	10.00	9.50

Slatted Rack (assembled)

These are made of Cypress material and are placed between the bottom and the hive body. They give better egg laying in the lower brood chamber. Less comb gnawing and better ventilation. New vertical slats.



ITEM#	DESCRIPTION	SHIP WT.	PRICE EACH	
			1-5	6-49
B14-S	Slatted Rack (10 Frame)	3 lbs.	\$22.50	\$20.75
B14-8-S	Slatted Rack (8 Frame)	3 lbs.	22.50	20.75

Inner Cover (assembled)

Our inner covers are made with a one piece plywood inner board that fits inside of a cypress rim. It comes with an escape hole and vent.



ITEM#	DESCRIPTION	SHIP WT.	PRICE EACH	
			1-5	6-49
B1C	Inner Cover - Hive Body (10 Frame)	3 lbs.	\$15.00	\$14.50
B1C-8	Inner Cover - Hive Body (8 Frame)	3 lbs.	15.00	14.50
B2	Extra Rim for Inner Cover (10 Frame)	1 lbs.	8.50	8.00
B2-8	Extra Rim for Inner Cover (8 Frame)	1 lbs.	8.50	8.00



Rossman Reversible Cover (unassembled)

ITEM#	DESCRIPTION	SHIP WT.	PRICE EACH	
			1-5	6-49
B6-R	Cypress Reversible Cover (10 Frame)	5 lbs.	\$14.50	\$13.75
B6-R-8	Cypress Reversible Cover (8 Frame)	5 lbs.	14.50	13.75

Ventilated Inner Cover (assembled)



ITEM#	DESCRIPTION	SHIP WT.	PRICE EACH	
			1-5	6-49
B8	Ventilated Inner Cover (10 Frame)	2 lbs.	\$16.00	\$14.25
B8-8	Vent. Inner Cover (Assembled) (8 Frame)	2 lbs.	16.00	14.25

Cover allows you to move a colony without fear of suffocation. It also provides better ventilation during the year reducing bees laying out on the entrance.

Cypress Bottoms, Stands, & Closures

Bottom Boards (unassembled)

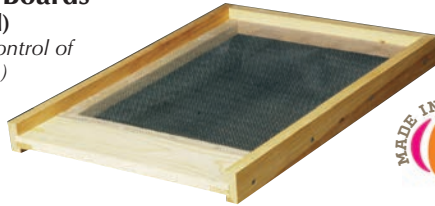


We make all of our bottoms out of 3/4" Cypress lumber - tongue-and-grooved. They are a full 22" long.

ITEM#	DESCRIPTION	SHIP WT.	PRICE EACH	
			1-5	6-49
B29	Cypress Bottom-Rev T&G Select (10 Frame)	7 lbs.	\$24.00	\$23.00
B29-8	Cypress Bottom-Rev T&G Select (8 Frame)	7 lbs.	24.00	23.00
B34	Cypress Bottom-Rev T&G Comm. (10 Frame)	7 lbs.	18.00	17.00
B34-8	Cypress Bottom-Rev T&G Comm. (8 Frame)	7 lbs.	18.00	17.00

Screen Bottom Boards (Assembled)

(Used for natural control of Varroa Mites)



ITEM#	DESCRIPTION	SHIP WT.	PRICE EACH	
			1-5	6-49
B30	Cypress Screened Bottom Board (10 Fr.)	4 lbs.	\$26.00	\$24.75
B30-8	Cypress Screened Bottom Board (8 Fr.)	4 lbs.	26.00	24.75



Moving Screens (Assembled)

A must for moving hives. Provides ventilation for bees when moving and keeps them securely in the hive. Can nail or screw in place.



ITEM#	DESCRIPTION	SHIP WT.	PRICE EACH	
			1-5	6-49
B33	Top Moving Screen (10 Frame)	2 lbs.	\$15.50	\$15.00
B33-8	Top Moving Screen (8 Frame)	2 lbs.	15.50	15.00
M70A	Entrance Moving Screen (10 Frame)	1 lb.	\$11.00	
M70A-8	Entrance Moving Screen (8 Frame)	1 lb.	10.50	

Entrance Reducer

An important piece of equipment that allows you to vary the size of the hive entrance to meet your needs at different times, such as feeding a weak colony or during winter.



ITEM#	DESCRIPTION	SHIP WT.	PRICE EACH	
			1-5	6-49
B32	Entrance Reducer	1 lb.	\$2.00	\$1.75
B32-8	Entrance Reducer (8 Frame)	1 lb.	2.00	1.75
B32-N	Entrance ReducerNuc	1 lb.	1.50	1.25

Cypress Wood Bound Excluder (Assembled)

Fits standard hive. Electrically welded, precisely spaced metal wires make the grid system that is edged (bound) on all sides with quality cypress filled wood.

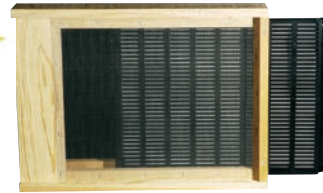


ITEM#	DESCRIPTION	SHIP WT.	PRICE EACH	
M68B	Wood Bound Excluder (10 Frame)	3 lbs.	\$15.00	
M68B-8	Wood Bound Excluder (8 Frame)	3 lbs.	14.50	
M68C	Rim for Wood Bound Excluder (10 Frame)	1 lb.	6.00	
M68C-8	Rim for Wood Bound Excluder (8 Frame)	1 lb.	5.75	

Screen Bottom Board Beetle Trap (Assembled)

This innovative new screened Bottom Board allows you the option of putting the West Beetle Trap under the screen. It removes from the back of the hive so you do not have to work on the bee entrance side. To get a count of mite fall you could lay a sticky paper on top of the trap. (Replacement tray on page 20.)

Note: 8 Frame Bottom is a modified 10 Frame Bottom and will require a 10 Frame Hive Stand.



ITEM#	DESCRIPTION	SHIP WT.	PRICE EACH	
			1-5	6-49
B30-90	Screened Bottom Board with Small Hive Beetle Trap (10 fr.)	7 lbs.	\$41.00	\$39.00
B30-90-8	Screened Bottom Board with Small Hive Beetle Trap (8 fr.)	7 lbs.	41.00	39.00

Cypress Hive Stand (unassembled)

Raises hive off the ground and protects bottom board from moisture. The front provides a landing board for returning bees that fall short of the bottom board.



ITEM#	DESCRIPTION	SHIP WT.	PRICE EACH	
			1-5	6-49
B25	Hive Stand - Hive Body (10 Frame)	3 lbs.	\$18.50	\$16.75
B25-8	Hive Stand - Hive Body (8 Frame)	3 lbs.	18.50	16.75

Double Screen (Assembled)

(for two queen colony) This piece of equipment will make your requeening easy. Using this screen allows you to effectively run a 2 queen hive. The double screen can also be used to increase hive population and foster swarm control.



ITEM#	DESCRIPTION	SHIP WT.	PRICE EACH	
			1-5	6-49
B9	Double Screen (Assembled) (10 Frame)	2 lbs.	\$27.50	\$26.75
B9-8	Double Screen (Assembled) (8 Frame)	2 lbs.	27.50	26.75

Plastic Queen Excluder

All plastic with properly sized openings for the worker bees to travel through. Flexible and durable. Easy to clean.



ITEM#	DESCRIPTION	SHIP WT.	PRICE EACH	
M68D	Plastic Queen Excluder (10 Frame)	2 lbs.	\$4.50	
M68D-8	Plastic Queen Excluder (8 Frame)	2 lbs.	4.00	

All Wire Metal Bound Excluder

This wire grid is edged (bound) with metal on all edges.



ITEM#	DESCRIPTION	SHIP WT.	PRICE EACH	
M68A	All Wire Metal Bound Excluder (10 Frame)	3 lbs.	\$8.00	
M68A-8	All Wire Metal Bound Excluder (8 Frame)	3 lbs.	8.00	



Pine Supers (Unassembled)

Also available in 8 frame



9 5/8"

Deep



6 5/8"

Medium



5 3/4"

Shallow

ITEM#	SIZE	DESCRIPTION	WEIGHT	PINE SUPERS (COMMERCIAL ONLY)			
A2P (10 Frame)	9 5/8	Pine Commercial - Deep	9 lbs.	\$16.00	15.50	15.00	14.75
A2P-8 (8 Frame)	9 5/8	Pine Commercial - Deep	9 lbs.	16.00	15.50	15.00	14.75
A6P (10 Frame)	6 5/8	Pine Commercial - Medium	6 lbs.	13.00	12.50	12.00	11.75
A6P-8 (8 Frame)	6 5/8	Pine Commercial - Medium	6 lbs.	13.00	12.50	12.00	11.75
A8P (10 Frame)	5 3/4	Pine Commercial - Shallow	5 lbs.	12.00	11.50	11.00	10.75
A8P-8 (8 Frame)	5 3/4	Pine Commercial - Shallow	5 lbs.	12.00	11.50	11.00	10.75

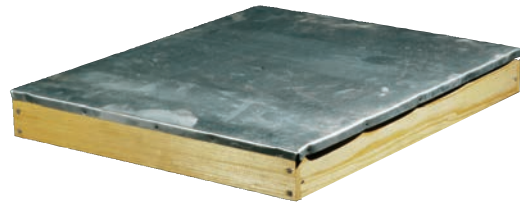
Pine Woodenware

Telescope Cover (unassembled)



ITEM#	DESCRIPTION	SHIP WT.	PRICE EACH	
B4-P	Pine Teles. Cover w/o Metal (10 Frame)	7 lbs.	1-5	6-49
B4-8-P	Pine Teles. Cover w/o Metal (8 Frame)	7 lbs.	17.00	16.25

Telescope Cover (unassembled)



ITEM#	DESCRIPTION	SHIP WT.	PRICE EACH	
B3-P	Pine Teles. Cover w/Metal (10 Frame)	10 lbs.	1-5	6-49
B3-8-P	Pine Teles. Cover w/Metal (8 Frame)	10 lbs.	22.00	21.25

Flat Cover (unassembled)



ITEM#	DESCRIPTION	SHIP WT.	PRICE EACH	
B5-P	Pine Flat Cover-Can Use Metal (10 Frame)	5 lbs.	1-5	6-49
B5-8-P	Pine Flat Cover-Can Use Metal (8 Frame)	5 lbs.	11.00	10.25

Migratory Cover (unassembled)



ITEM#	DESCRIPTION	SHIP WT.	PRICE EACH	
B7-P	Pine Migratory Cover (10 Frame)	6 lbs.	1-5	6-49
B7-8-P	Pine Migratory Cover (8 Frame)	6 lbs.	11.50	10.75

Reversible Cover (unassembled)



ITEM#	DESCRIPTION	SHIP WT.	PRICE EACH	
B6-P	Pine Reversible Cover (10 Frame)	5 lbs.	1-5	6-49
B6-8-P	Pine Reversible Cover (8 Frame)	5 lbs.	11.00	10.25

Rossmann Reversible Cover (unassembled)



ITEM#	DESCRIPTION	SHIP WT.	PRICE EACH	
B6-R-P	Pine Reversible Cover (10 Frame)	5 lbs.	1-5	6-49
B6-R-8-P	Pine Reversible Cover (8 Frame)	5 lbs.	11.00	10.25



Miscellaneous Hive Parts



Cypress Ross Rounds



RR411 - Complete assembled Cypress Ross Rounds Super - 10 frame (Cypress, Super, follower boards, springs, frames, rings, covers, and foundation) **(Price is all inclusive, nothing else to buy to start Ross Rounds) 15 lbs. \$125.00**

RR412 - Complete assembled Cypress Ross Rounds Super - 8 frame (Cypress, Super, follower boards, springs, frames, rings, covers, and foundation) **(Price is all inclusive, nothing else to buy to start Ross Rounds) 14 lbs. \$125.00**

RRR32 - The Ross Round refill gives you everything that you need to refill and harvest one complete Ross Round super. The refill includes 10 sheets of foundation, 64 rings, 32 opaque bottoms, and 32 crystal clear tops **6 lbs. \$58.00**

Ultimate Hive Cover

This is a one piece plastic cover for a 10-frame hive. The cover can be used with or without an inner cover. Light color and double insulation keeps hive cooler in the summer and warmer in the winter. Just place a small 1-2 lb rock on top of the cover or strap lightly to the hive. **(8-frame is a 10-frame top with reducers installed.)**



ITEM#	DESCRIPTION	SHIP WT.	PRICE EACH
B23	Hive Cover (10-frame)	5 lbs.	\$25.00
B23-8	Hive Cover (8-frame)	5 lbs.	25.00

Ultimate Hive Stand

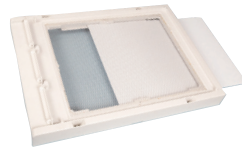
This is the only hive stand you will ever need. This stand is made in the U.S.A. from recycled materials, and won't rust or rot. It raises your hive 12" off the ground for easy access and better ventilation. Your bottom board of any kind sits on heavy duty rails with built in drains to keep hive components dry for longer life. It also comes with swing out frame holders and ballast ports so sand can be added for extra stability. (Available in 8-frame and 10-frame). **(Stand only, hive and accessories not included.)**



ITEM#	DESCRIPTION	SHIP WT.	PRICE EACH
B24	Ultimate Hive Stand (10 Frame)	9 lbs.	\$75.00
B24-8	Ultimate Hive Stand (8 Frame)	9 lbs.	75.00

Ultimate IPM Bottom Board

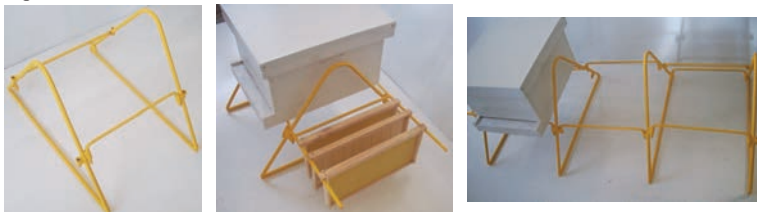
Discover the most versatile, user friendly, easy to use, modular Universal IPM Bottom Board System with textured Landing Board, combination Entrance Reducer/Mouse Guards, stainless mesh and Inspection Board to make it easier to keep healthier and happier bees.



ITEM#	DESCRIPTION	SHIP WT.	PRICE EACH
B21	IPM Bottom Board	5 lbs.	\$29.95

Heavy Duty Hive Stand

These stands won't warp, crack or bend in bad weather like wood or plastic. Each stand will accommodate both the eight and ten frame hives. You have no screws, nuts, or bolts to come loose when you least expect it. A money saving option to our hive stands is the optional interlocking cross bars. The cross bars attach in the spaces for the frame holders between two stands making room for a third hive saving half the cost of a third stand.



ITEM#	DESCRIPTION	SHIP WT.	PRICE EACH
B22	Heavy Duty Hive Stand	10 lbs.	\$42.00
B22A	Frame Holder	2 lbs.	14.00
B22B	Interlocking Cross Bars	2 lbs.	22.00
B22C	Ground Steaks	2 lbs.	4.00



RRL100



RRL110

Item#	Description	SHIP WT.	PRICE
RRC100	100 Crystal Covers (2 per section)	8 lbs.	\$49.00
RRO100	100 Opaque Covers (2 per section)	8 lbs.	49.00
RRF18	8 Round Section Frames with rings	6 lbs.	48.80
RR100	100 Round Section Rings	3 lbs.	25.00
RRL100	<u>Traditional</u> Roll of 100 labels	1 lb.	14.00
RRL110	<u>Modern</u> Roll of 100 labels	1 lb.	14.00
RR120	Foundation (3 7/8" x 16 1/2") (10 sheets)	2 lbs.	10.00

Sundance™ Pollen Trap

(Assembled) Features of the Sundance Pollen Trap are: a cover to prevent hive debris from entering the pollen drawer, a stainless steel screen on the drawer, heavy duty galvanized wire cloth, a rear opening drawer, and bee exits that do not require going through stripper screens. You can switch from collection to non-collection so that the trap can be left on all season. This is the only trap that can be used while using sticky boards for mite detection. Comes with Instructions. Fully assembled. Now available in 8 frame.

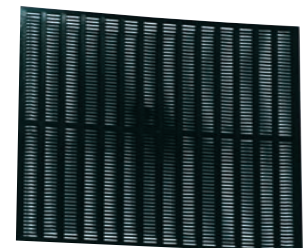


10-frame M120 (Fits on bottom)
8-frame M120B (Fits on bottom)

ITEM#	DESCRIPTION	SHIP WT.	PRICE EACH
M120		8 lbs.	\$80.00
M120B (8-frame)		7 lbs.	80.00

Propolis Trap

Used in place of inner cover to collect propolis and earn extra money. Marketing info available at 800-283-4274.



ITEM#	DESCRIPTION	SHIP WT.	PRICE EACH
M130		1 lb.	\$8.00

Cypress Nuc Woodenware



Cypress Nuc Stand (Unassembled)

Raises hive off the ground and protects bottom board from moisture. The front provides a landing board for returning bees that fall short of the bottom board.



ITEM#	DESCRIPTION	SHIP WT.	PRICE EACH	
			1-5	6-49
B27	Cypress Hive Stand 5 Frame Nuc	3 lbs.	\$11.75	\$11.25

Inner Cover (Unassembled)

Our inner cover is made of cypress wood. It has three 3/8" boards, tongue and groove that fit inside a cypress rim. It comes with escape hole and air vent.

B2C

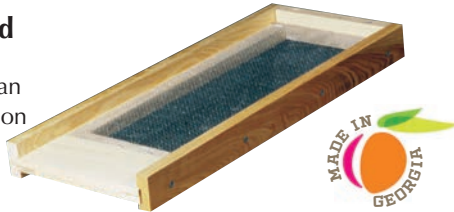


B2N

ITEM#	DESCRIPTION	SHIP WT.	PRICE EACH	
			1-5	6-49
B2C	Inner Cover 5 Frame Nuc	3 lbs.	\$11.75	\$11.25
B2N	Rim for Inner 5 Frame Nuc	1 lb.	7.00	6.75

Screen Bottom Board (Assembled)

Screened Bottom Boards can be used for natural ventilation & mite control.



ITEM#	DESCRIPTION	SHIP WT.	PRICE EACH	
			1-5	6-49
B30N	Screen Bottom Board for 5-Frame Nuc	3 lbs.	\$17.75	\$16.00

Bottom Board (Unassembled)

We make all of our bottoms out of 3/4" Cypress lumber - tongue-and-grooved. They are a full 22" long and come with an entrance reducer. The entrance reducer is used in winter to reduce the opening in front to help keep cold air and wind out.



ITEM#	DESCRIPTION	SHIP WT.	PRICE EACH	
			1-5	6-49
B35	Bottom Board 5 Frame Nuc	3 lbs.	\$10.75	\$10.25

Entrance Moving Screen (Assembled)

For 5-frame Nuc- A must have for moving hives. Provides ventilation for bees when moving and keeps them securely in the hive. Can nail or screw in place.



ITEM#	DESCRIPTION	SHIP WT.	PRICE EACH	
M70B	Entrance Moving Screen	1 lb.	\$9.50	

Top Moving Screen (Assembled)

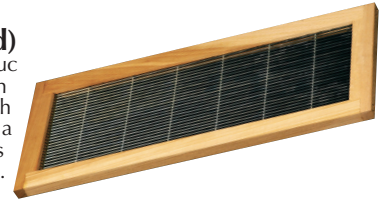
These tops are used when moving bees to keep them ventilated. It could also be used as a vented inner cover as the ends are 1/4" higher than the side in order that air can escape.



ITEM#	DESCRIPTION	SHIP WT.	PRICE EACH	
			1-5	6-49
B33N	Top Moving Screen 5 Frame Nuc	1 lb.	\$10.75	\$10.25

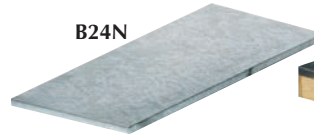
Excluder (Assembled)

Our Excluder for 5-frame Nuc is the only one produced in the industry. It is bound with Cypress wood and will last a lifetime. Use it the same as you would other excluders.

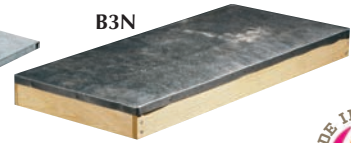


ITEM#	DESCRIPTION	SHIP WT.	PRICE EACH	
			1-5	6-49
M68	Excluder - 5-frame Nuc	2 lbs.	\$12.50	\$12.00

B24N



B3N



Extra Metal for Telescope Cover

Telescope Cover (Unassembled)



ITEM#	DESCRIPTION	SHIP WT.	PRICE EACH	
			1-5	6-49
B24N	Extra Metal for Telescope Cover	1 lb.	\$9.50	\$8.00
B3N	Telescope Cover - 5-frame Nuc	4 lbs.	21.75	20.50

Nuc Migratory Cover for Five Frame Nuc (Unassembled)



ITEM#	DESCRIPTION	SHIP WT.	PRICE EACH	
			1-5	6-49
B7N	Nuc migratory cover for Five Frame Nuc	2 lbs.	\$12.00	\$11.50

Five Frame Nuc Body - 6 5/8" (Unassembled)



ITEM#	DESCRIPTION	SHIP WT.	PRICE EACH	
			1-5	6-49
F38A	Five Frame Nuc Body - 6 5/8"	5 lbs.	\$15.25	\$14.50



Five Frame Nuc Body - 9 5/8" (Unassembled)



ITEM#	DESCRIPTION	SHIP WT.	PRICE EACH	
			1-5	6-49
F39A	Five Frame Nuc Body - 9 5/8"	6 lbs.	\$19.75	\$18.75

Queen Rearing Supplies

Five Frame Nuc With Migratory Cover (Unassembled)

Used to raise your own queens, for making divisions, or to hold queens until needed. Also good for catching swarms. Nucs come with migratory cover, bottom board, and Boardman feeder (No frames). **Includes Feeder**



ITEM#	DESCRIPTION	SHIP WT.	PRICE EACH	
			1-5	6-49
F38-M	5-frame Nuc 6 5/8"	14 lbs.	\$36.50	\$35.00
F39-M	5-frame Nuc 9 5/8"	21 lbs.	41.50	39.00

Cell Starter Kit (Unassembled)

The Cell Starter Kit contains all the equipment you need to rear queen bees.

Kit includes:

- 1 - Nuc Box 9 5/8"
- 3 - 9 1/8" Frames
- 1 - Feeder - Boardman
- 1 - Cell bar frame
- 45 - Wax cell cups
- 3 - Sheets 8 1/2" Plastic Foundation



ITEM#	DESCRIPTION	SHIP WT.	PRICE EACH
F40	Cell Starter Kit	24 lbs.	\$86.00

Introducing the Mobile Queen Cell Nursery

The Queen Cell Incubator is used for transporting cells from bee yards or queen nuc yards to keep them warm. Great Features: Electronic thermostat is factory pre-set. No adjustment required. 12 volt system is safe, reliable, and mobile. It can be powered by battery, auto, or wall outlet. Large window in top allows clear view of what is inside. This box is well insulated and comes with an automotive power attachment. (Includes both wall and auto adapters)(Frames and Cell not included)



ITEM#	DESCRIPTION	SHIP WT.	PRICE EACH
G43	Mobile Queen Cell Nursery	7 lbs.	\$170.00

Queen Catcher

Allows the beekeeper to catch the Queen without using your hand.



ITEM#	DESCRIPTION	SHIP WT.	PRICE EACH
G48-M	Metal Queen Catcher	8 oz.	\$6.00
G48-P	Plastic Queen Catcher	8 oz.	4.00

Queen Catcher Marking Combo

Catch the queen with just one hand and know you will mark her easily and safely! Our new Queen Catcher has a safety stop built in to keep from applying too much pressure and killing the queen and its one-handed design makes it quick and easy.



ITEM#	DESCRIPTION	SHIP WT.	PRICE EACH
G30	Queen Catcher Marking Combo	1 lb.	\$12.00
G44	Queen Marking Tube	1 lb.	6.00

Queen Marking Tube

This tube has two uses: Holding and isolating the queen and marking the queen. The soft plunger will keep her a prisoner until you are ready.

Five Frame Nuc (Unassembled)

Used to raise your own queens, for making divisions, or to hold queens until needed. Also good for catching swarms. Nucs come with Telescoping cover with metal, inner cover, bottom board, and Boardman feeder (No frames). **Includes Feeder**



ITEM#	DESCRIPTION	SHIP WT.	PRICE EACH	
			1-5	6-49
F38	5-frame Nuc 6 5/8"	14 lbs.	\$58.00	\$54.00
F39	5-frame Nuc 9 5/8"	21 lbs.	63.00	58.00

Queen Marking Pen

These handy queen marking pens will make it easier on you, no spilling, no balancing the bottle. Just a quick and easy stroke with these markers will get the job



ITEM#	DESCRIPTION	SHIP WT.	PRICE EACH
G49W	White Queen Marking Pen (Year Ending 1 or 6)	8 oz.	\$7.00
G49Y	Yellow Queen Marking Pen (Year Ending 2 or 7)	8 oz.	7.00
G49R	Red Queen Marking Pen (Year Ending 3 or 8)	8 oz.	7.00
G49G	Green Queen Marking Pen (Year Ending 4 or 9)	8 oz.	7.00
G49B	Blue Queen Marking Pen (Year Ending 5 or 0)	8 oz.	7.00

Chinese Bamboo Grafter

It looks like a ball point pen. A non slip grip in the middle section gives you control. The tip is a small, very thin flexible plastic tab which slides up under the larvae and when you push the end the larvae is pushed off the tip.



ITEM#	DESCRIPTION	SHIP WT.	PRICE EACH
G41	Chinese Bamboo Grafter	8 oz.	\$6.00

Double End Transferring Needle

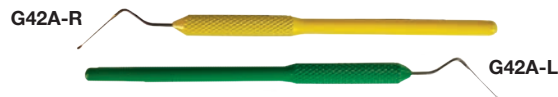
Both ends are designed for grafting, each offering a different configuration. Both ends are flattened to get under the larvae with ease.



ITEM#	DESCRIPTION	SHIP WT.	PRICE EACH
G42	Double End Transferring Needle	8 oz.	\$15.00

Deluxe Transferring Needle

Developed by Swiss surgical tool company, this is the finest and best balanced grafting tool available today. Specify right handed or left handed.

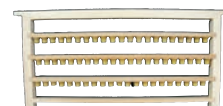


ITEM#	DESCRIPTION	SHIP WT.	PRICE EACH
G42A-R	Deluxe Transferring Needle (Right)	8 oz.	\$40.00
G42A-L	Deluxe Transferring Needle (Left)	8 oz.	\$40.00

Wax Cell Cups



This frame is used with wax cell cups (sold separately) for queen rearing. The three cell bars are removable so that you can dip the bottom of wax cell cups in melted wax and stick them to the bar.



ITEM#	DESCRIPTION	SHIP WT.	PRICE EACH
G47	Wax Cell Cups (375 count per lb.)	Varies	\$13.00 per lb.
C15	Cell Bar Frame	1 lb.	8.50

Tools and Miscellaneous Supplies



Frame Perch

The most efficient and convenient way to hold comb filled frames during inspection of the colony.

ITEM#	SHIP WT.	PRICE EACH
M2	2 lbs.	\$23.00

XL Hive Tool

This BEAST of a hive tool measures 12" long and 2" wide at the ends! Lots of tool for lots of leverage. (pen not included, for size reference only)

New



ITEM#	SHIP WT.	PRICE EACH
M78A-SS	1 lb.	\$14.00

Premium Steel Hive Tools 10", 7", and 5"

These hive tools are made of high quality stainless steel to give a lifetime of use. They have a tapered flat end for prying and removing frames and one carved end for scraping. Available in 10", 7", and 5".



ITEM#	SHIP WT.	PRICE EACH
M78B-SS 10"	1 lb.	\$10.00
M78C-SS 7"	1 lb.	9.00
M78D-SS 5"	1 lb.	7.00

Standard Stainless Steel Hive Tool

This hive tool is made of quality stainless steel to give a lifetime of use. It has a tapered flat end for prying and removing frames and a curved end for scraping.



ITEM#	SHIP WT.	PRICE EACH
M78B	8 oz.	\$7.00

Bee Brush

Brush is used to brush bees off frames when removing the honey.

MADE IN USA



ITEM#	SHIP WT.	PRICE EACH
M54	3 oz.	\$6.00

New

Locking Frame Grip

The Universal Frame Grip design can be used on BOTH Plastic and Wood Bee Frame Foundations from all standard Suppliers and Manufacturers sold today. Locking Feature – This is accomplished by simply turning clockwise a clamping knob attached through a special sliding locking arm. The Mule-Grip™ unit adjusts to the width of the frame. It will stay locked even when set aside until the clamping knob is turned counter-clockwise to release its hold. Reduces worry of dropping bee frames and damaging comb, killing bees especially the queen.



ITEM#	SHIP WT.	PRICE EACH
M18	2 lbs.	\$32.00

Wood Handled Frame Grip

The larger wooden handle on this grip allows you to have a more secure and controlled grip on the tool.



ITEM#	SHIP WT.	PRICE EACH
M66	2 lbs.	\$12.00

Frame Grip

Heavy Duty - No easier way to remove frames from your hives.



ITEM#	SHIP WT.	PRICE EACH
M73	1 lb.	\$14.00

Support Pins

Support your crimp wire and comb honey foundations without wire! Just insert these split rivets into the eyelet holes on the end bars of your wooden frames. For medium or shallow frames use 4 pins and for deep frames use 8 pins.



ITEM#	SHIP WT.	PRICE EACH
M99 (100 pins)	8 oz.	\$8.50
M99A (500 pins)	2 lbs.	34.00
M99B (1000 pins)	3 lbs.	70.00

Spur Embedder

Use hand pressure to fasten wire in any foundation needing horizontal wires for added support. Roll the wide tooth spur points along each wire. May use warm (preferable) or cold.



ITEM#	SHIP WT.	PRICE EACH
M98	8 oz.	\$10.00

Eyelets

Small brass eyelets are punched into the wiring holes in end bars of brood and super frames. Prevents wire from cutting into the wood.



Eyelet Punch

Makes insertion of the eyelets simple and easy.



ITEM#	SHIP WT.	PRICE EACH
M67A (1000)	3 oz.	\$7.50
M67B (5000)	8 oz.	30.00
M67 (Eyelet Punch)	1 oz.	4.00

Tools and Miscellaneous Supplies

Ratchet Strap 18' x 1 1/2'

You never can have enough ratchet straps! Try one of our new 18' x 1 1/2' ratchet straps when tying down pallets, bees or one of the many heavy loads that beekeepers deal with daily.



ITEM#	SHIP WT.	PRICE EACH
M38	2 lb.	\$15.00

Metal Queen Excluder Cleaner

There is a tool to make every job easier and this heavy-duty tool is an awesome tool to make cleaning out your metal excluders a lot easier.



ITEM#	SHIP WT.	PRICE EACH
M34	1 lb.	\$14.00



Wax Tube Fastener

Wax Tube Fastener is ideal for securing foundation into grooved top bar (cut comb and chunk honey) frames. Metal cylinder is filled by lowering into container of hot, liquid beeswax. When cylinder is filled, wax is retained in cylinder by placing finger over air hole. With foundation in place, the wax tube fastener is run along the top bar groove. By removing finger from air hole, a small amount of wax flows out to cement the foundation to the top bar.

ITEM#	SHIP WT.	PRICE EACH
M14	5 oz.	\$8.00

Wire

This wire is 26 gauge. Should be used for horizontal wiring board or extracting frames in which plain or unwired foundation is to be used. May also be used with crimp wire foundation to gain even greater strength.



ITEM#	SHIP WT.	PRICE EACH
M132 (1/2 lb.-700')	1 lb.	\$6.00
M132A (1 lb.-1400')	2 lbs.	8.00
M132B (5 lb.-7000')	6 lb.	30.00

Cypress Form Board

Used for inserting foundation and embedded wires. Can be used for all three sizes of frames. Place the frame over the board and a platform extends up to the middle of the frame. This allows the foundation to be nailed in place and the wire embedded easier.



ITEM#	SHIP WT.	PRICE EACH
M71	2 lbs.	\$12.00

Hive Straps

These straps are great for making sure your hive stays together when you want them to.



ITEM#	SHIP WT.	PRICE EACH
M36	1 lb.	\$8.00

Hive Closures

Control traffic on any hive with our Entrance Disc. A wide variety of applications in one piece of equipment! Simply mount with a screw (not included). Designed with four options:

1. Open Access
2. Queen Excluder
3. Ventilation
4. Closed



ITEM#	SHIP WT.	PRICE EACH
M39-P (Plastic)	1 lb.	\$1.00
M39-S (Steel)	1 lb.	\$2.50

Adjustable Entrance Closer



ITEM#	SHIP WT.	PRICE EACH
M11	1 oz.	\$4.00

Mouse Guard

Stainless steel, 3/8" holes allow bees to come and go and keep the mice out.

MADE IN USA



ITEM#	SHIP WT.	PRICE EACH
M90	2 oz.	\$8.00

Adjustable Entrance Reducer



ITEM#	SHIP WT.	PRICE EACH
M12	3 oz.	\$4.00

Tools and Miscellaneous Supplies



Pallet Clips

Allows you to secure colonies for transportation. Made of 16 gauge galvanized metal.



ITEM#	SHIP WT.	PRICE EACH
M4	8 oz.	\$.80
M4C (250/CS)	48 lbs.	\$168.00

L-Shaped Rabbets

Metal support for frames in hive body.



ITEM#	SHIP WT.	PRICE EACH
M83 (10 pk)	8 oz.	\$3.00
M83A (50 pk)	3 lbs.	13.00
M83B (100 pk)	6 lbs.	24.00

Stoller Frame Spacers

Spacers accurately space 8 or 9 frames in 10-frame supers and 7 frames in 8-frame supers.



ITEM#	SHIP WT.	PRICE EACH
M121 (10 pk 9-frame for 10-frame hive)	8 oz.	\$7.00
M121-8 (10 pk 8-frame for 10-frame hive)	8 oz.	7.00
M121-7 (10 pk 7-frame for 8-frame hive)	8 oz.	7.00
M121B (50 pk 9-frame for 10-frame hive)	3 lbs.	34.00
M121B-8 (50 pk 8-frame for 10-frame hive)	3 lbs.	34.00
M121B-7 (50 pk 7-frame for 8-frame hive)	3 lbs.	34.00
M121A (100 pk 9-frame for 10-frame hive)	6 lbs.	65.00
M121A-8 (100 pk 8-frame for 10-frame hive)	6 lbs.	65.00
M121A-7 (100 pk 7-frame for 8-frame hive)	6 lbs.	65.00

Nails

- M85** - 4D galvanized for all covers,
- M86** - 7D galvanized coated box nails for hive bodies, supers, and bottom boards.
- M87** - 1 1/4" cement coated frame nails for top and bottom bars.
- M88** - 3/4" cement coated nails for inner covers, metal on telescoping covers, slatted rack slats, and wedges on wedge top bars.



ITEM#	SHIP WT.	PRICE EACH
M85 (4D nails, 460/lb.)	1 lb.	\$4.00
M86 (7D nails, 180/lb.)	1 lb.	\$3.75
M87 (1 1/4" nails, 1150/lb.)	1 lb.	\$4.00
M88 (3/4" nails, 2600/lb.)	1 lb.	\$4.75

Hive Staples

Staples penetrate 3/4" points 2" apart. Quick, easy way to fasten bottom board to hive body.



ITEM#	SHIP WT.	PRICE EACH
M89 (125/lb.)	1 lb.	\$7.00

Polyester Fiber Drum Gasket

Polyester Fiber Gasket used for sealing 55 gal drum lids.



ITEM#	SHIP WT.	PRICE EACH
M62P	2 oz.	\$0.80

Bee Dome *New*

The Bee Dome is an awesome addition for any beekeeper! Install this dome on top of your top box with a medium super around it and you have your very own observation hive. Now you can see what your bees are doing without suiting up. You can also share the hobby you love with the people you love.



ITEM#	SHIP WT.	PRICE EACH
M41	2 lbs.	\$15.00

B-Funnel

The B-Funnel is designed to reduce stress and save time and effort when installing package bees. Made of corrugated plastic, it is very easy to put together and use. A Velcro strap holds it securely against the hive. The bee keeper then positions the bee cage on top of the funnel. It can be left there for as long as it takes for the bees to move into their new home.



ITEM#	SHIP WT.	PRICE EACH
MG62	2 lbs.	\$13.00

Metal Frame Spacing Tool

(Stainless Steel) Will easily space frames in a 10 frame honey super.



MADE IN USA

ITEM#	SHIP WT.	PRICE EACH
M70C (8 frame spacing tool)	8 oz.	\$19.00
M70 (9 frame spacing tool)	8 oz.	19.00

Frame Saver

Save time and money with this Frame Saver. Don't throw away a good frame with comb because your top bar end is broken. Fix it with the Frame Saver



ITEM#	DESCRIPTION	SHIP WT. PER 100	PRICE
D5	Frame Savers (Lots of 10)	1 lb.	\$4.00
D5A	Frame Savers (Lots of 100)	7 lbs.	30.00

Closed Cell Foam Gaskets

Does not absorb moisture or honey, and provides a better seal.



ITEM#	SHIP WT.	PRICE EACH
M62F	2 oz.	\$.80

Rubber Gasket

Rubber gaskets for sealing the lids onto 55 gallon open top barrels.



ITEM#	SHIP WT.	PRICE EACH
M62R	2 oz.	\$.80



Smokers

Premium Stainless Steel Smokers

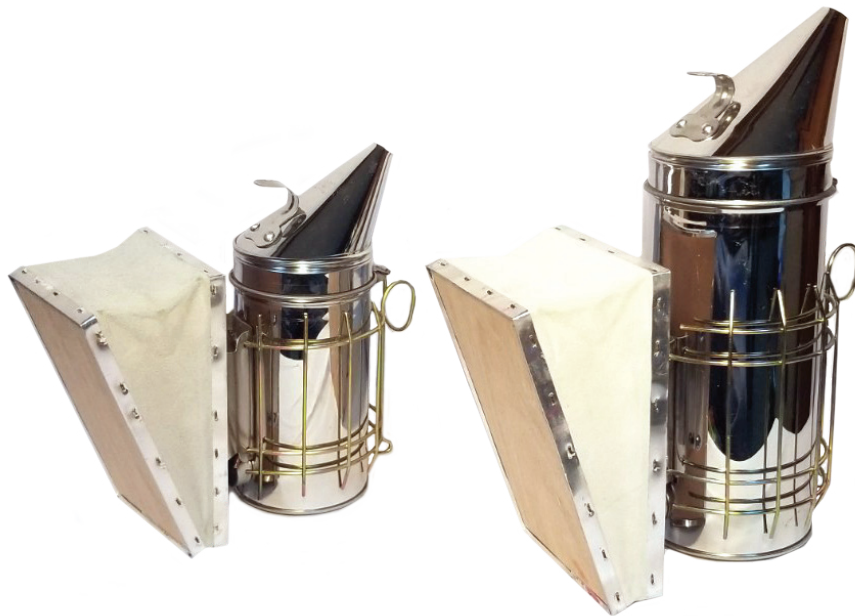
These smokers are the original, be aware of look alikes. We offer smokers in several sizes and styles. From the economical 4x7 for the occasional use by hobbyist to the large 4x10 stainless steel model.



ITEM#	DESCRIPTION	SHIP WT.	PRICE EACH
M96	4x10 Stainless with added Finger Shield	3 lbs.	\$47.00
M91A	4x7 Smoker with Shield	3 lbs.	42.00

Stainless Steel Economy Smokers

These smokers are perfect for the beginner that wants to start beekeeping on a budget. They are good dependable smokers at fraction of the cost of our Premium smokers.



ITEM#	DESCRIPTION	SHIP WT.	PRICE EACH
M32	3" X 6" w/shield	2 lbs.	\$18.00
M33	4" X 8 1/2" w/shield	2 lbs.	25.00

Smoker Grate

Stainless Steel - For personal protection from the heat of the fire chamber.



ITEM#	SHIP WT.	PRICE EACH
M95	8 oz.	4.00

Smoker Bellow

Flexible, easy grip, holds staples firmly, air valve.



ITEM#	SHIP WT.	PRICE EACH
M94	1 lb.	\$13.00

Smoker Fuel

Smoker fuel is clean, raw, short cotton fibers. 100% pure compressed cotton.



ITEM#	SHIP WT.	PRICE EACH
M93	1 lb..	\$3.50
M93-5	5 lbs.	16.00

Smoker Pellets

Long lasting smoke makes your trip to the bee yard better, with compressed wood pellets your smoke is always ready.



ITEM#	SHIP WT.	PRICE EACH
M103 (40#)	40 lbs.	\$13.00
M103A (5#)	5 lbs.	5.00

Feeders



Boardman Feeder

For entrance - Refill jar without opening hive. Feeder fits snugly into entrance of hive. Works best late spring, summer, early fall.

ITEM#	SHIP WT.	PRICE EACH
G52 (lid included)	1 lb.	\$5.50
G52A (lid only)	8 oz.	1.00



Hive Top Feeder

Holds up to 4 gallons of syrup. It features a galvanized steel safety screen to prevent drowning of bees. Feeder is made of a heavy duty, single piece plastic to provide a no-leak reservoir.

ITEM#	SHIP WT.	PRICE EACH
G56 (for 10 fr.)	6 lbs.	\$24.00
G59 (insert only)	2 lbs.	\$18.00
G56-8 (for 8-frame)	6 lbs.	\$24.00
G59-8 (insert only)	2 lbs.	\$18.00

Holds up to 3 gallons of syrup.



Plastic Feeder Pail

A pail feeder can be used on the inside of the hive by placing it over the hole in the inner cover. Place an empty hive body around it and the telescoping cover on top.

ITEM#	SHIP WT.	PRICE EACH
G58-2P (2 gal. w/plug)	2 lbs.	\$7.00
G58-2 (2 gal. w/o plug)	2 lbs.	5.75
G50-2 (2 gal. Feeder Plug)	8 oz.	2.50
G58-1P (1 gal. w/plug)	2 lbs.	6.00
G58-1 (1 gal. w/o plug)	2 lbs.	4.75
G50-1 (1 gal. Feeder Plug)	8 oz.	2.50



Ultimate Bee Feeder

This durable plastic feeder holds up to 1 gallon of feed and can also double as a waterier for healthier and cooler bees. The removable drip free tank is easy to fill and place on the feeder base with no more spills. (Feeder only)

ITEM#	SHIP WT.	PRICE EACH
G60C	3 lbs.	\$23.00

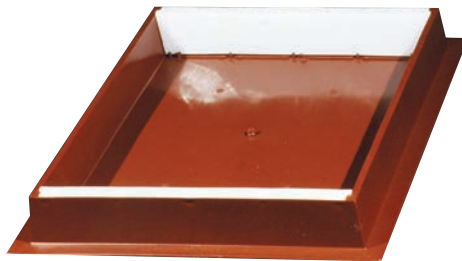


New

9 1/8" Pro Feeder

Sealed feeding tubes ensure the bees are confined to the feeding area so you will experience minimal drowning. This is the only feeder available where the entire cap and ladder system is easily removed for cleaning.

ITEM#	SHIP WT.	PRICE EACH
G31	2 lbs.	\$10.00



One Piece Plastic Hive Top Feeder

This plastic feeder is designed to be used with no extra rim. Place it on top of the hive with about 2 gallons of syrup, place the top on it and walk away.

ITEM#	SHIP WT.	PRICE EACH
G55 (for 10 fr.)	2 lbs.	\$20.00
G57 (for 5 fr. Nuc)	2 lbs.	17.00
G55-8 (for 8 frame)	2 lbs.	19.00



Ultimate Hive Top & Feeder Combo

This Combo includes an Ultimate Hive Cover and Ultimate Top Feeder. The cover has a hole in the top so that the feeder plugs right in. It also comes with a plug to close the hole when the feeder is not being used. The feeder holds up to 1-gallon of feed and can be accessed without opening the hive. (8-frame is a 10-frame top with reducers installed.)

ITEM#	SHIP WT.	PRICE EACH
G60B (10-frame)	2 lbs.	\$40.00
G60B-8 (8-frame)	2 lbs.	40.00



Plastic Entrance Feeders

Another option for entrance feeding. This feeder has an extended tray that makes the feed more available to the inside of the hive. All molded high impact plastic is easy to clean. Available in 2 sizes; the small size holds approximately 1 qt. of syrup and the large holds almost 2 qts.

ITEM#	SHIP WT.	PRICE EACH
G53A (Small)	1 lb.	\$5.00
Buy 10 or more (each)		4.50
G53 (Large)	1 lb.	6.00
Buy 10 or more (each)		5.50

Plastic Division Board Feeder

Holds approximately 1 gallon, heavily ribbed inside gives bees a perfect foothold while climbing in and out.



ITEM#	SHIP WT.	PRICE EACH
G51	2 lbs.	\$7.00

Supplements and Treatments



16 oz. makes 25 gal. of solution

Vitamin B Healthy

This brand new feeding supplement can be used alone in syrups and protein patties or with Honey-B-Healthy and Amino-B-Booster. Helps provide needed nutrients vital for bee health and helps build strong colonies for maximum honey production and pollination. Can also be used to help build up weak, over-winterized colonies, packages, nucs and swarms.

Honey B Healthy

This new product is added to syrup and fed to bees in spring and fall, and during periods when no nectar is available. It is a natural product incorporating a special stabilized blend of dispersible essential oils. (Lemongrass and Spearmint Oils)

Amino-B Booster

Use this new product as a feeding stimulant to encourage brood rearing and to help fortify poor and overwintered pollen. It can also be used with Honey-B-Healthy.

ITEM#	SHIP WT.	PRICE EACH
O157 (16 oz.) (Honey-BHealthy)	1 lb.	\$28.00
O157A (Gallon) (Honey-BHealthy)	12 lbs.	150.00
O157AB-16 (16 oz.) (Amino B)	1 lb.	28.00
O157AB-Gal (1 Gallon) (Amino B)	12 lbs.	150.00
O159 (16 oz.) (Vitamin B Healthy)	1 lb.	28.00

Ultra Bee Pollen Substitute

This pollen substitute offers good nutrition which equals healthier, stronger and longer-living bees.

- Increased brood production!
- Healthier, stronger bees!
- No animal by-products!
- A complete amino acid profile!
- Beneficial vitamins, lipids and minerals!
- Made with the finest ingredients!
- Ready to feed when you need it!
- Highest protein content available!



58% Crude Protein

ITEM#	SHIP WT.	PRICE EACH
O162 50 lb. Bag	52 lbs.	\$90.00
O162A 1 lb. Container	12 lbs.	10.00
O162B 10 lb. Pail	12 lbs.	30.00

Para Moth

Para Moth (PDB) treatment for wax moth in stored supers. Place 3 oz. (6 tbs.) on a paper plate and place on top bars of upper supers, stack 5 deep supers or 9 shallow supers and cover with a tarp. Reapply as needed. Air out 1-2 weeks prior to placing on hive. (Do not use in the hive or with cut comb honey or unextracted combs of honey.)



ITEM#	SHIP WT.	PRICE EACH
O144 (PDB #1)	1 lb.	\$16.00
O144A (PDB #5)	5 lbs.	40.00
O144B (PDB #35)	35 lbs.	148.00

Nitrile Gloves

These Blue Nitrile gloves are latex and powder free. They are great to use when you're handling chemicals and medications that you use in your hive. Thicker and more sting resistant than regular latex.



ITEM#	SHIP WT.	PRICE EACH
M60	1 lb.	\$1.00

Menthol 50 gr. Treatment for Tracheal Mite

Apply one packet per hive on the top bars of the upper corner of the brood box and leave for a minimum of 28 days. Treat spring and fall, remove 30 days before honey flow. 80°F or below place on Top Bars. 80°F or above place on Bottom Board. Temperature must be 60°-95°F.



ITEM#	SHIP WT.	PRICE EACH
O150 (Pkg. of 10)	2 lbs.	\$34.00

Cypress Treatment Drawer

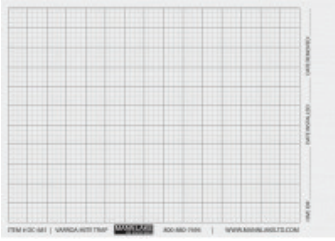
(Assembled) Products such as Para Moth or menthol can be placed in Treatment Drawer for control of Wax Moths in stored combs or when applying menthol on live hives.



MADE IN USA

ITEM#	SHIP WT.	PRICE EACH
M102	15 lbs.	\$30.00

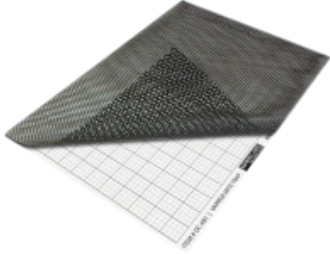
Varroa Control



Varroa Sticky Board

This sticky board can be used with or without the screen to monitor or diagnose a varroa infestation. If placed directly on the bottom board a screen will be needed to keep the bees from the adhesive. When used in conjunction with a screened bottom board, the replacement sticky board can be used alone. The sticky board is conveniently printed with the grid lines to aid in determining the number of mites present.

ITEM#	SHIP WT.	PRICE EACH
M116	1 lb.	\$4.00



Varroa Sticky Board w/Screen

This sticky board can be used with or without the screen to monitor or diagnose a varroa infestation. If placed directly on the bottom board, the screen will be needed to keep the bees from the adhesive. When used in conjunction with a screened bottom board, the replacement sticky board can be used alone. The sticky board is conveniently printed with the grid lines to aid in determining the number of mites present.

ITEM#	SHIP WT.	PRICE EACH
M115	1 lb.	\$7.50

Apivar®

Use Apivar for treatment of Varroa mites.

Apivar® is packaged in vacuum-sealed foil pouches that each contain 10 strips. A single application of two strips per brood chamber is sufficient to treat a hive, so you spend less time and effort treating your bees, and there is less disruption of the bees than with many other treatments (Can only be sold in states with EPA approval)



ITEM#	SHIP WT.	1-9	10-49
O161	1 lb./10 Strips	\$37.00	\$34.00
O161A	5 lb./50 Strips	135.00	130.00

Oxalic Acid Vaporizer

This product is used to vaporize a small scoop of Oxalic Acid into the hive to kill Varroa Mites. You place the acid in the tray and slide it in the front of the hive then hook up the vaporizer to a 12 volt car battery for 2 1/2 minutes, unhook the vaporizer from the battery and you're done. We include a metal scoop and bottle of Oxalic Acid with each vaporizer.

Warning: Do not inhale the fumes.



ITEM#	SHIP WT.	PRICE EACH
M119	3 lbs.	\$120.00

Oxivap Pro 110 Sideliner/ Commercial Vaporizer

Just plug it in to an inexpensive inverter, generator or use house current. The vaporizer is a 110 volt electrical appliance, 250 watts, 2.2 amps. This is the one you've waited for and now it's here! We're talking 20 seconds per hive! No wand to insert, just point and shoot! No guessing on dosage! No compressor or battery!



ITEM#	SHIP WT.	PRICE EACH
M118	5 lbs.	\$485.00

New

Detect-O-Mite

Sampling and detecting the mite load in your hives has never been easier. The bees and the mites are temporarily anesthetized using CO2 gas. The unconscious mites are shaken off the bees through a screen to be counted. The sample bees are returned to the hive unharmed. Kit includes: sample container, anesthetizing lid, screened sifting lid, CO2 dispenser, 16oz CO2 canister, and instructions



ITEM#	SHIP WT.	PRICE EACH
M114	2 lbs.	\$30.00



Easy Check

Varroa EasyCheck is a ready-to-use varroa mite shaker that makes monitoring infestations more accurate and reliable than ever before: up to 80% efficiency with a single wash!

ITEM#	SHIP WT.	PRICE EACH
M117	1 lb.	\$20.00

Apiguard

Use for treatment of Varroa mites. Place pack on top bars of hive for a slow release of Thymol gel. Close off screen bottom boards and vent holes. Apply in fall unless heavy infestation. Temperatures 60°-105°F. Do not apply when honey supers are on.



ITEM#	SHIP WT.	PRICE EACH	
O160 (Pkg. of 10)	1 lb.	1-9	10+
		\$36.00	\$34.00
O160A (60 - 50g treatments)	7 lbs. (Bulk)	1-20	21+
		\$105.00	\$103.00

Apistan

Apistan for Varroa Mites - use in spring before the first honey flow and in the fall after the last honey flow. 1 strip for every 5 frames of bees. Temperature above 50° F.



ITEM#	SHIP WT.	PRICE EACH
O148 (Pkg. of 10)	1 lb.	\$35.00
O149 (Pkg. of 100)	3 lbs.	220.00

Hopguard II

Hopguard II is a miticide that is derived from natural hop compounds and has been field tested and scientifically proven to be a highly effective varroa mite control system. This product provides beekeepers with a safe and easy to use alternative to traditional harsh chemicals. The kit comes with 24 insert strips which are to be used at the rate of 2 insert strips per 10-frames. (Can only be sold in states with EPA approval)



ITEM#	SHIP WT.	PRICE EACH
O160B (24 strips)	1 lb.	\$45.00

Beetle Traps and Treatments



CheckMite

Treatment for small Hive Beetle and Varroa Mite. Use 1 strip for every 5 frames of bees. Remove strips after 42-45 days. Most effective when brood rearing is lowest. (Call for availability)

ITEM#	SHIP WT.	PRICE EACH
O151 (Pkg. of 10)	1 lb.	\$38.00
O151A (Pkg. of 100)	3 lbs.	\$295.00



Beetle Trap Oil

This special blend will attract beetles better than plain oil. Pint fills 23 traps, quart fills 47 traps.

ITEM#	SHIP WT.	PRICE EACH
O123 Pint 16oz.	1 lb.	\$6.50
O124 Quart 32oz.	2 lb.	\$9.50

Beetle Towel

Brawny Beetle Dine-A-Max Beetle Towels are an effective and economical way to trap small hive beetles. Cut each towel into three pieces, placing one to two sheets in each hive where beetles congregate.

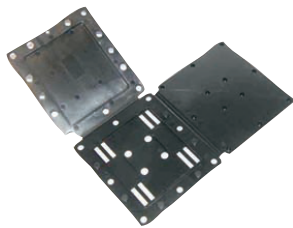


Your bees will chew up the towels, creating a fuzzy trap. Beetles are unable to escape once they make contact with the towel. Replace sheets once they become filled with beetles and repeat! 10 quarter sheets per package.

ITEM#	SHIP WT.	PRICE EACH
M112 (10/pk)	1 lb.	\$4.50
M113 (150/case)	5 lb.	\$52.00

Beetle Hotel

This patent pending device solves the problem with current bee beetle traps. Current traps allow the beetles in but they also provide easy access for bees to seal up the entrances to the traps. As a result with in just days the traps are sealed closed and worthless. By creating a two level trap with a parking garage in the bottom it allows a large amount of access for the beetles while at the same time confusing the bees into not sealing off the parking garage access.



ITEM#	SHIP WT.	PRICE EACH		
M90C	1 lb.	1-9 \$5.00	10-49 \$4.50	50+ \$4.00

Beetle Baffle

The beetle baffle is a new product that goes between your bottom board and hive body that creates a barrier that keeps the beetle from being able to go up in the hive but still allows the bees entry. The baffle also assist the bees in removing beetles from the hive by confining them to the bottom board. The baffle can be place directly on the bottom board and one side on the bottom of the hive body or attach all four sides to a rim and placed onto the bottom board. (Rim sold separately)



(Bottom board not included)

ITEM#	SHIP WT.	PRICE EACH
M90B (10-frame Baffle)	1 lb.	\$16.00
M90B-R (10-frame Rim)	1 lb.	\$2.50
M90B-RA (10-frame Assembled Baffle w/Rim)	2 lbs.	21.00
M90B-5 (5-frame Baffle)	1 lb.	16.00
M90B-R-5 (5-frame Rim)	1 lb.	2.50
M90B-RA-5 (5-frame Assembled Baffle w/Rim)	1 lb.	21.00
M90B-8 (8-frame Baffle)	1 lb.	16.00
M90B-R-8 (8-frame Rim)	1 lb.	2.50
M90B-RA-8 (8-frame Assembled Baffle w/Rim)	1 lb.	21.00

Small Hive Beetle Trap

This trap consist of a tray that you partially fill with a small amount of vegetable oil and a specially designed lid that is covered with almost 300 small slots. The SHB fall into the vegetable oil, and are coated with it, suffocate, and die. It is just that simple! (Also sold with screen bottom board on page 7.)



ITEM#	SHIP WT.	PRICE EACH
M90A	2 lbs.	\$16.00

Beetle Jail Baitable

The beetle jail baitable is a reusable plastic trap that hooks on the top bar of a frame and hangs on the side. Fill the end compartments with vegetable oil and the middle compartment with bait to help lure beetles in.



ITEM#	SHIP WT.	PRICE EACH			
		EACH	10-49	50-99	100-999
M90T	1 lb.	\$3.50	\$3.00	\$2.50	\$2.25

Beetle Barn

Place bait in middle and close top. Place Beetle Barn on top of frames or on bottom board.



ITEM#	SHIP WT.	PRICE EACH	
M90D	1 lb.	1-49 \$1.50	50+ \$1.25

Cutts Beetle Blaster

Fill with vegetable oil and put between top bars.



ITEM#	SHIP WT.	PRICE EACH			
M90E	1 lb..	1-49 \$1.80	50-99 \$1.60	100-999 \$1.25	1000 \$1.10



Pest Control

Gardstar

Ground Treatment for Hive Beetles (Do not use inside hive) Each 4 oz. bottle makes 23 gallons, and 1 gallon will treat about 6 hives. 1 quart makes 189 gallons to treat about 1134 hives. Mix with water. Apply when needed. **Highly toxic** – if applying around hive where beetles are present, sprinkle can must be used.



ITEM#	SHIP WT.	PRICE EACH
O152 (4 oz.)	1 lb.	\$34.00
O153 (1 Quart)	3 lbs.	125.00

Nectar Fortress

If you're tired of fighting ants in your hive and don't want to use poisons, this product is for you. Nectar Fortress is used on humming bird feeders to keep ants out of the feed. It doesn't kill, it repels. Draw a thin line around where ants would enter and they won't cross it.



ITEM#	SHIP WT.	PRICE EACH
O120	1 lb.	\$7.00

Fire Ant Killer

All natural non toxic fire ant killer! Use wet or dry for control of ants and fire ants around your hive. This product will not harm bees or other animals. Main ingredient is food grade diatomaceous earth.



ITEM#	SHIP WT.	PRICE EACH
O156 (14 oz. shaker)	1 lb.	\$16.00
O156A (2 lb. bag)	2 lbs.	23.00

Swarm Control



Swarm Trap

Designed to catch swarms - hang in a tree or on a stand to attract swarms. Should be used with a Pheromone placed inside of it.

ITEM#	SHIP WT.	PRICE EACH
O136	8 lbs.	\$23.00

Pheromones

To catch swarms in a swarm trap or beehive.



ITEM#	SHIP WT.	PRICE EACH
O130	8 oz.	\$2.50

Swarm Commander Vials (5-Pack)

Swarm Commander Vials are plastic vials that won't degrade over time. They contain .5 ml. of Swarm Commander Premium Swarm Lure product. No need to place these in the freezer or refrigerator. Shelf life is 2 years. Store in temperature controlled environment.



ITEM#	SHIP WT.	PRICE EACH
O132 (5 vials)	1 lb.	\$10.00

Swarm Commander Spray

Swarm Commander Swarm Lure is a premium swarm lure that has been formulated to help you capture more feral swarms. Swarm Commander mimics "Nasanov" which is the natural pheromone of the worker honey bee.



ITEM#	SHIP WT.	PRICE EACH
O131	1 lb.	\$30.00

Swarm Commander Super Lure

The Swarm Commander Super Lure is the easiest and newest swarm lure in the market. Simply hang in your empty hive or swarm trap and you are baited for a minimum of 90 days.



ITEM#	SHIP WT.	PRICE EACH
O133	1 lb.	\$13.00

Rossman Apiaries *New* Logo Cap

Check out our new snap back mesh caps! These are high quality caps at a bargain price. Select one of ten awesome colors when ordering or just order all ten!



Item: Z218 Ship wt.: 1 lb. Price: \$8.50
 (Available in Neon Pink, Neon Green, Black & Gold, Neon Orange, Neon Blue, Light Blue, Khaki, Red White & Blue, Green, Red)



Bee Life T-Shirts

These shirts are a great new way to show you live the life of a beekeeper. Help raise awareness about honeybees by showing off how you feel about them.

Back



(Safety Pink)

Front



(Heather Grey)

Beelife1 - S, M, L, XL \$17.00
Beelife2 - 2XL, 3XL - \$18.00
 (Available in Safety Pink & Heather Grey)

Bee Life Window Decal

This window decal is a great way to show your passion for being a beekeeper. These decals are made from



Item: BeelifeD Ship wt.: .5 lb
Price: \$4.00

Back



Front



BeeSmoke1 - S, M, L, XL - \$17.00
BeeSmoke2 - 2XL, 3XL - \$18.00
 (Available only in black)

Back



Front



KeepCalm1 - S, M, L, XL - \$17.00
KeepCalm2 - 2XL, 3XL - \$18.00
 (Available only in brown)

Bee Life Car Tag

These tags are a great way to show your passion for being a beekeeper. These are acrylic tags with vinyl lettering and design and come in gloss black, gloss white, or mirrored yellow.

Item: BeelifeT \$15.00 Ship wt.: 1lb
Color option - Gloss Black, Mirrored Yellow or Gloss White



Back



Front



(Green)

Beeabout GN (Green) - S, M, L, XL - \$17.00
Beeabout GN (Green) - 2XL, 3XL - \$18.00

Back



Front



(Grey)

Beeabout GY (Grey) - S, M, L, XL - \$17.00
Beeabout GY (Grey) - 2XL, 3XL - \$18.00
 (Available in Green & Grey)

Beekeepers Clothing



Ventilated Inspector Jacket

Hot! Hot! Hot! Well not in this jacket. This is one of the most comfortable, coolest, softest and lightest weight jackets on the market. Not only does the light weight mesh offer airflow and moisture management but it is super sting resistant due to the thickness of the material. So if you want a jacket that will keep you COOL and PROTECTED this is it and it's worth every cent! (veil sold separately) **Ship Wt. 4 lbs.**

Veils Sold Separately
(BM10 or BM03 sold separately)



BM988-S - (Small)	\$85.00
BM988-M - (Medium)	85.00
BM988-L - (Large)	85.00
BM988-XL - (X Large)	90.00
BM988-XXL - (2X Large)	90.00
BM988-XXXL - (3X Large)	90.00
BM988-XXXXL - (4X Large)	90.00

Clear-View Hat-Veil Combo-Zipper

This veil is a one-piece construction that offers a 100% cotton hat with reinforced brim and a crush resistant mesh that will not rust. This veil can be used on the ventilated inspector jacket, cotton inspector jacket, ventilated bee master suit, and cotton bee master suit. It allows you to have multiple protective wear options and only have to buy one veil. **Ship Wt. 3 lbs. One Size Fits All.**



Inspector Jacket

The Inspector Jacket is made of 100% American Cotton. The jacket features large pockets, hive tool pocket, elastic hems at waist and cuffs, and drawstring inside waist line for added protection and comfort. **Ship Wt. 3 lbs.**



Veils Sold Separately
(BM10 or BM03 sold separately)

BM01 - S (32-34).....	\$68.00
BM01 - M (36-38)	68.00
BM01 - L (40-42).....	68.00
BM01 - XL (44-46)	72.00
BM01 - 2XL (48-50)	72.00
BM01 - 3XL (52-54)	72.00

Bee Britches

Bee Britches made for our customers that are shorter in stature. Britches have an elastic draw waist. Elastic and zipper at the ankles, a hive tool pocket, one flat pocket and one cargo pocket. Great pants for women and men. **Ship Wt. 2 lbs.**

BM09 - (Small/Medium)	\$40.00
BM09 - (Large/X-Large).....	40.00



Veils Sold Separately
(BM10 or BM03 sold separately)

Ventilated Bee Master Suit

Hot! Hot! Hot! Well not in this suit. This is one of the most comfortable, coolest, softest and lightest weight suits on the market. Not only does the light weight mesh offer airflow and moisture management but it is super sting resistant due to the thickness of the material. So if you want a suit that will keep you COOL and PROTECTED this is it and it's worth every cent! **Ship Wt. 4 lbs.**



BM987-S - (Small)	\$110.00
BM987-M - (Medium)	110.00
BM987-L - (Large)	110.00
BM987-XL - (X Large).....	115.00
BM987-XXL - (2X Large).....	115.00
BM987-XXXL - (3X Large)	115.00
BM987-XXXXL - (4X Large)	115.00

Hooded Veil With Zipper

This dome style veil offers you the same versatility as the Clear View Hat-Veil Combo by being able to attach to four different suit options. So now you can pick the protective wear you want and not be limited on your veil option. Use with either suit or jacket with zipper.

Ship Wt. 3 lbs. (One size fits all)



BeeMaster Suit

The BeeMaster Suits are made of 100% American cotton. The suits feature large pockets, hive tool pocket, and elastic hem at waist. Double elastic in waist, zippers in legs, and extra knee protection. **Ship Wt. 4 lbs.**

Veils Sold Separately
(BM10 or BM03 sold separately)



BM04 - S (32-34).....	\$95.00
BM04 - M (36-38)	95.00
BM04 - L (40-42).....	95.00
BM04 - XL (44-46)	100.00
BM04 - 2XL (48-50)	100.00

100% Cotton Coveralls

100% American made cotton and American made coveralls. Generously cut, double elastic at the waist. Elastic with 12" zip at ankle. Crotch is gusseted for extra bending room. Knees have double material for padding and extra wear. **Ship Wt. 3 lbs.**



BM07 - S	\$80.00
BM07 - M	80.00
BM07 - L	80.00
BM07 - XL	85.00
BM07 - 2XL	85.00
BM07 - 3XL	85.00



Vented Leather Gloves

There are two areas where beekeeping gloves tend to wear out, at the web between your thumb and forefinger and around the ventilation panel. In these vented leathers an extra panel is in the web area and added a stiffer ventilation panel. **Ship Wt. 1 lb.**

M75 (S, M, L, XL, Childs) \$23.00



Vented Leather Gloves

These lambskin gloves are soft and flexible but still offer the durability and protection that you need to keep your hands safe.

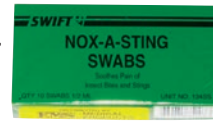
ITEM#	SHIP WT.	SIZE	PRICE EACH
PM75	1 lb.	S-XL	\$17.00



Smartphone Gloves

These comfortable leather gloves have special pads on the index finger and thumb that allow you to operate touchscreen electronics. Now you can answer that important phone call or use your phone to take a picture of what's going on in the hive and not worry about getting stung.

ITEM#	SHIP WT.	SIZE	PRICE EACH
SE77	1 lb.	S-XL	\$20.00



O147



O147A

Sting Relief

O147 **Sting Kill Swabs** (10 per box) \$6.00

Quick (usually 30 seconds to one minute) relief from stings in most cases. Fights secondary infection. Also excellent for mosquito and chigger bites. **Ship Wt. 8 oz.**

O147A **Sting Kill Gel** \$10.00

100% guaranteed to give complete relief from the pain, itch, and swelling of bees, wasps, hornets, fireants, mosquitoes, and jellyfish. **Ship Wt. 8 oz.**



Clear-Vue® Hat-Veil Combo Tie-Down

The Clear-Vue Hat-Veil Combo features one-piece construction for durability. Hat is 100% cotton with reinforced brim. The veil material is crush-resistant mesh that will not rust. **Ship Wt. 1 lb. One Size Fits All.**

BM02 \$59.00



Hatless Veil *Ship Wt. 2 lbs.*

This is a great portable veil that doesn't require a helmet to be worn with it. It's roomy enough to be worn over a ball cap but once its folded down its small and compact.

BM08 \$20.00



Woven Hat & Veil Combo *Ship Wt. 1 lb.*

One-piece hat and veil combo with adjustable under arm straps that have quick release hooks.

SE01 \$20.00

Bee Vest with Hooded Veil

If you're the type of person that can't stand to wear a bee suit or even a jacket but still wants a little protection you're going to love this vest. This bee vest which covers your shoulders, chest, and upper back. It comes with a hooded veil and elastic arms and bottom. It's perfect for throwing on without a jacket.



ITEM#	SHIP WT.	PRICE EACH
PM10	1 lb.	\$19.00

Mesh Bee Vest with Hooded Veil

If you're the type of person that can't stand to wear a bee suit or even a jacket but still wants a little protection you're going to love this vest. This bee vest has mesh that covers your shoulders, chest, and upper back. It comes with a hooded veil and elastic arms and bottom. It's perfect for throwing on without a jacket.



ITEM#	SHIP WT.	PRICE EACH
PM06	1 lb.	\$20.00



Sweat Band

Light weight, elastic, terry cloth material absorbs moisture and cools wearer.

M122 \$4.00

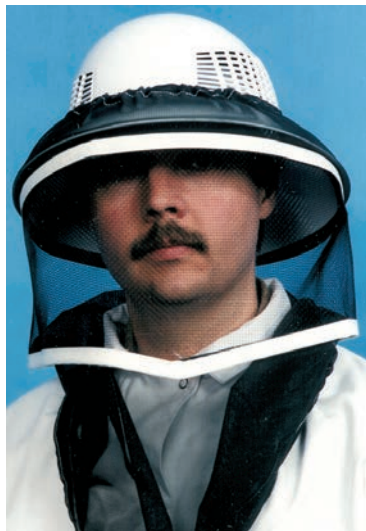


Boot Bands

Stops bees from crawling up pant legs. Sturdy 2" wide by 14 1/2" long bands with velcro are used to tighten pants legs against boots. **Ship Wt. 8 oz.**

M56 \$5.00

Beekeepers Clothing



Excelsior (Round) Veil

A clear view in all directions. Double seamed, open mesh netting, top and bottom elastic top. Bottom drawstring. (Helmet not included.) **Ship Wt. 1 lb.**

M126 \$16.50



Premium Woven Helmets

These helmets are very high quality helmets and will hold up and last much longer than many of the cheaper products on the market today. They are made to the same government specifications as the United States Postal Service pith helmets and have the added feature of veil hooks to keep your veil in place. It has a fully adjustable headband with sweatband cushion that can be removed for washing and their available in tan or white. **Ship Wt. 2 lbs.**

M77W (White)..... \$24.00
M77T (Tan) 24.00

Hooded Veil with Drawstring

This is a hooded style veil with drawstrings that can be worn with or without a jacket or suit.



ITEM#	SHIP WT.	PRICE EACH
PM07	1 lb.	\$16.00



Folding Veil

Open mesh netting top with elastic cord to fit any hat or helmet. Strong seamed wire netting face, side and neck panels are hinged at all corners to permit easy flat folding for storing. **Ship Wt. 1 lb.**

M125 \$17.50



Polyscreen Folding Veil

We are pleased to offer this folding style veil with a new polyscreen material. Durable and flexible screening that won't rust and will hold up to many seasons of use. Features white nylon binding. **Ship Wt. 1 lb.**

M128 \$20.50

Hatless Round Veil with Drawstring

This hatless veil with drawstring features a round hood to give you an all around view. It can be worn with or without a jacket or suit.



ITEM#	SHIP WT.	PRICE EACH
PM08	1 lb.	\$16.00



Tulle Cloth Veil

This is the lightest weight and easiest to carry of all. Tulle veil uses clear vision fabric that is really cool. Elastic cord at bottom and top so veil will fit any hat. **Ship Wt. 8 oz.**

M127 \$13.50



Premium Plastic Helmets

These helmets are very high quality helmets and will hold up and last much longer than many of the cheaper products on the market today. They are made to the same government specifications as the United States Postal Service pith helmets and have the added feature of veil hooks to keep your veil in place. It has a fully adjustable headband with sweatband cushion that can be removed for washing. **Ship Wt. 2 lbs.**

M77B \$16.00

Hat & Veil Combo

With this new hat and veil combo there's no more fighting with drawstrings to get it tied. This combo features an elastic bottom with elastic straps that go under your arms and can be worn with or without a jacket or suit. It's easy to put on and take off and collapses flat for easy storage. (Elastic straps not drawstring).



ITEM#	SHIP WT.	PRICE EACH
PM03	1 lb.	\$15.00

Honey Extraction Supplies

Honey Robber

Just a few drops on a fume board will move bees out of supers quickly. Contains the same active ingredient as Bee-Go but works and smells better.



ITEM#	SHIP WT.	PRICE EACH
O135 (Pint)	1 lb.	\$20.00
O135A (Quart)	3 lbs.	33.00
O135B (Gallon)	10 lbs.	101.00

Honey-B-Gone

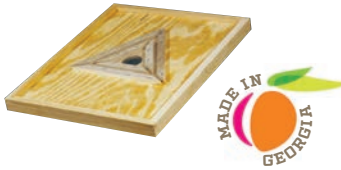
Honey-B-Gone is used to clear honey supers of honey bees. This makes your job of harvesting honey easier. And much more pleasant. Our product smells like cherries or almonds. You'll love it but your bees won't!



ITEM#	SHIP WT.	PRICE EACH
O134 (8 oz.)	1 lb.	\$17.00
O134A (16 oz.)	2 lbs.	22.00
O134B (Gallon)	12 lbs.	135.00

Triangle Bee Escape (Assembled)

Put this below the honey super with the triangle facing down a day before harvest. The maze allows bees to go downward without being able to return for a natural chemical free harvest.



ITEM#	SHIP WT.	PRICE EACH
M51 (10 Frame)	5 lbs.	\$15.00
M51-8 (8 Frame)	5 lbs.	14.50

Refractometer

Use to quickly determine the moisture content of honey. Only one drop of honey is needed to measure the moisture content.



ITEM#	SHIP WT.	PRICE EACH
M104	1 lb.	\$70.00

Food Approved Lubricant

For extractors, honey house equipment and other applications where it is important to avoid contamination of food products.



ITEM#	SHIP WT.	PRICE EACH
L151	12 oz.	\$12.00
L151A	4 oz.	7.00

Beeswax Mold Tray

Use these trays for making beeswax bars. They are made from hard plastic. Great for selling your excess wax. (Makes 1 oz. bars)



ITEM#	SHIP WT.	PRICE EACH
M53	8 oz.	\$10.00



Pail Heater

For 5 gallon plastic pails. 9 1/2" to 12". Preset thermostat at 125°F.

ITEM#	SHIP WT.	PRICE EACH
P100	4 lbs.	\$112.00
Q168W-L	(5 Gal. Pail w/Lid, No Heater)	8.00

Bee Escape

The bee escape is placed in the center opening of an inner cover. Used when taking honey off without having to use chemicals.



ITEM#	SHIP WT.	PRICE EACH
M55	8 oz.	\$3.75



Fisher's Bee-Quick

A natural product used to remove bees from supers. Runs bees from supers in all weather.



ITEM#	SHIP WT.	PRICE EACH
O138 (8 oz.)	1 lb.	\$17.00
O138A (Gallon)	10 lbs.	140.00



Cypress Fume Pad

(Assembled) Used with Honey Robber or Bee-Quick to drive bees from the honey super. Honey can be removed much faster and easier with fume pad. Our fume pads are constructed with the same quality and cypress materials as our telescoping covers. (Order Bee-Quick or Honey Robber separately)



ITEM#	SHIP WT.	PRICE EACH
M72 (10 Frame)	4 lbs.	\$16.00
M72-8 (8 Frame)	4 lbs.	15.00

Comb Cutter

This stainless steel comb cutter is used to cut squares of honey comb once the comb has been removed from the frame. Let the comb drain and then place it in our plastic cut comb boxes. (cut comb boxes on page 29)



ITEM#	SHIP WT.	PRICE EACH
M13	1 lb.	\$14.00

Bee Blanket Bucket Heater

The Bee Blanket keeps your honey at hive temperatures so that it won't lose nutrients or burn. The Bee Blanket is the new gold standard honey heater.



ITEM#	SHIP WT.	PRICE EACH
P200	5 lbs.	\$110.00

Honey House Equipment

Speed King Uncapping Knife

Blade temperature is controlled by built-in thermostat. 120 volt operation. Wood handles are cool on your hands. High quality blades are 10" long and 2" wide. Guaranteed by manufacturer for 2 year with all warranties handled by manufacturer.

MADE IN USA 



ITEM#	SHIP WT.	PRICE EACH
M124A	2 lbs.	\$120.00

Serrated Uncapping Knife

The double sided serrated knife cuts through the capping very effectively.



ITEM#	SHIP WT.	PRICE EACH
M124	1 lb.	\$26.00

Maxant Electric Uncapping Plane

Perfect tool for small or large operations. UCP has an adjustable heated copper cutting blade for depth of cut. The heating element is long lasting and replaceable. 110V Available in stock. On/off switch built into cord. The large comfortable rock maple handle is comfortable to use. Just pull the UCP across the combs and feel the difference. (Left handed and 220V versions available for special order and pricing)



ITEM#	SHIP WT.	PRICE EA.
LUCP	3 lbs.	\$140.00

Bucket Dolly

This new item will be a great addition to anyone's honey house or shop. Just put a 5-gal bucket in it and wheel it around instead of hurting yourself trying to carry a heavy bucket full of honey.



ITEM#	SHIP WT.	PRICE EACH
M37	1 lb.	\$18.00

Rolling Uncapper

Fast Easy and affordable. Roll over your capped comb and let the spikes break open each cell so that the honey can be extracted. You will be able to roll through your frames in no time. **Roller is 4" wide and can be used on Shallow, Medium or Deep Frames.**



ITEM#	SHIP WT.	PRICE EACH
M123B	2 lbs.	\$20.00

Comb Capper

Combcapper® is an essential tool in helping beekeepers remove the honeycomb cappings from bee frames. Until now, most beekeepers were faced with two alternatives: buying expensive capping units or building their own homemade contraption. Combcapper® solves the problem with one simple, easy-to-use product.



MADE IN USA 

ITEM#	SHIP WT.	PRICE EACH
M123	2 lbs.	\$29.00

Bucket Bench

This handy device allows you to rest a pail above another pail to allow the honey to drain into a pail. Virtually all the honey will drain from pails if left for 10 or 15 minutes. The device is made of food grade plastic and disassembles for compact storage.

MADE IN USA



ITEM#	SHIP WT.	PRICE EACH
M30	1 lb.	\$15.50

Pail Perch

The stainless steel pail perch is great for pouring honey from one container to another. The perch rest on the side of the receiving container as your bucket rest on the perch to get out every drop of honey without having to hold it by hand.



ITEM#	SHIP WT.	PRICE EACH
M3	2 lbs.	\$28.00



Cappings Scratcher

The only "uncapping tool" used by many hobby beekeepers. An excellent hand tool for opening the cells to let the honey out. 20 sharp needles molded into high strength plastic. A must in every honey house. Colors may vary.

ITEM#	SHIP WT.	PRICE EACH
M57	8 oz.	\$7.00

Food Grade Uncapping Tub Deluxe

Deluxe Plastic construction. Perfect for the small beekeeper. For use to uncap frames. The bar holds frames so you can uncup them and the grid drains the cappings of honey into the bottom tank. The grid can also be used for draining out comb honey. The bottom tank has a 1 1/2" plastic honey gate. Save a mess and the trouble of extracting for the small producer.



ITEM#	SHIP WT.	PRICE EACH
M123A	25 lbs.	\$145.00

Gamma Lid

Transform your bottling bucket or 5 gallon honey storage bucket into an easy opening, air tight, pest proof container.



ITEM#	SHIP WT.	PRICE EACH
Q184	2 lbs.	\$13.00

Pail Opener

Rugged plastic pail opener great for any honey house.



ITEM#	SHIP WT.	PRICE EACH
M16	1 lb.	\$10.00

Pail Opener with Bung Opener

This lid remover allows you to easily remove lids from buckets and has an added feature that allows you to open the bung lid on top of barrels



ITEM#	SHIP WT.	PRICE EACH
M15	1 lb.	\$12.00

New Stainless Steel Double Strainer

This stainless steel strainer features both a coarse screen and a fine screen to make straining faster. The strainer is shown on a 2-gallon pail and adjustable legs expand to fit larger containers up to 15" in diameter such as a 5-gallon bucket.



ITEM#	SHIP WT.	PRICE EA.
M97C (Double Strainer)	5 lbs.	\$32.00

Hobbyist Bottling Tank



Constructed of 22 gauge 18/10 food grade stainless steel with welded construction as are all of our honey tanks. A stainless steel filter insures the 132 pounds of honey it will hold is perfectly clean and easy to bottle. The tank is 25" tall with a diameter of 12" and comes with a stainless steel lid and plastic honey gate.



ITEM#	SHIP WT.	PRICE EACH
M64	48 lbs.	\$235.00

Compact Extractor with Legs

Extracts all frames tangentially. The 18/10 stainless steel 22-gauge tank, is 16" in diameter and 23" high. 4 shallow (5 3/8") 4 medium (6 1/4") or 2 brood (9 1/8") each time you extract. We now include bolt-on legs with this extractor. Full 1-year warranty.



ITEM#	SHIP WT.	PRICE EACH
L140	65 lbs.	\$340.00

Double Strainer

This heavy duty plastic strainer features both a coarse screen and a fine screen to make straining faster. This strainer is designed to fit a 5-gallon bucket.



ITEM#	SHIP WT.	PRICE EACH
M97B	1 lb.	\$18.00

Bottling Bucket

(Bucket with honey gate) 5 gallon bucket with plastic honey gate. Can be used with the micron filters (sold separately for a filtering system).



ITEM#	SHIP WT.	PRICE EACH
M63	3lbs. 2 oz.	\$27.00

Food Grade Bucket

5 Gallon Bucket w/lid



ITEM#	SHIP WT.	PRICE EACH
Q168W-L	2 lbs.	\$8.00

9-Frame Radial Hand Extractor

If you have 6 to 20 colonies of bees, this is the answer for you! This extractor will extract 9 medium frames (6 1/4") or 9 shallow frames (5 3/8"). With the addition of the included set of cages you can tangentially extract 3 brood frames (9 1/8"). Hinged Plexiglass covers are hinged to the top of the extractor which has a diameter of 21". The T.I.G. welded 18/10-food grade stainless tank is 24" tall. Honey gate must be open during extraction. Full 1-year warranty.



ITEM#	SHIP WT.	PRICE EACH
L150	76 lbs.	\$590.00

Micron Filters

These filters are custom designed to fit securely on the 5 gallon honey bucket. An excellent and inexpensive filter that will make your honey sparkle.



ITEM#	SHIP WT.	PRICE EACH
EZ200 (Fine Filter)	1 lb.	\$7.00
EZ400 (Medium Filter)	1 lb.	7.00
EZ600 (Coarse Filter)	1 lb.	7.00

1 1/2" Honey Gates

Make your own tanks with these all plastic Honey Gates.



ITEM#	SHIP WT.	PRICE EACH
M81C (1 1/2" Gate)	1 lb.	15.00

1 1/4" Honey Gates

Make your own tanks with these all plastic Honey Gates.



ITEM#	SHIP WT.	PRICE EACH
M81 (1 1/4" Gate)	1 lb.	\$16.00

Electric 9-Frame Radial Extractor

Cut your extracting time in half by slinging 9 frames at a time. This beauty is 24" tall, 24" in diameter, and sits on three sturdy legs. The food grade stainless steel will last you for many years and provide you with the purest product available. Will extract 9 shallow (5 3/8") and 9 (6 1/4") frames. Italian made 110 volt motor and controller. 2 year warranty.



ITEM#	SHIP WT.	PRICE EACH
L150A	100 lbs.	\$995.00

MADE IN USA 

Maxant Honey Equipment

MADE IN USA 

Gear Honey Pump

The Maxant Honey Pump is an integral part of the honey house. End the bucket brigade! Use a pump to move your honey from the clarifier or sump to the filters and bottling tanks. The pump runs at a reasonable slow speed for just the right pumping. Pump is 1" NPT and comes ready to place in line. Customer provides clamps and food grade clear flex tubing for connections. Please note, honey must be at least 85° F. The honey pump cannot pump cold honey.



ITEM#	SHIP WT.	PRICE EA.
L400-1	82 lbs.	\$899.00

Vertical Honey and Capping Auger

Same as above except 2" diameter auger and tube. Great for pumping 55 gallon drums of honey into your bottling tanks. Can also move cappings and honey mix into spinners. Exit nipple is 1 1/2" diameter. This unit will not fit into bung hole on drum, the bung hole will need to be opened up a little. (110 volt)



ITEM#	SHIP WT.	PRICE EA.
L2200-36	Truck	\$1,500.00

Liquifier and Wax Melting Tanks

This combo tank is 18 gauge stainless steel with a single wall around a tank that holds one 5-gallon pail of honey on a metal rack and can also be used as a wax melting tank. Dump your cappings into the hot water and the wax rises to the top and the water on the bottom. It features separate ball valves to drain off individual layers and a chromalux immersion heater. (110 volt)



ITEM#	SHIP WT.	PRICE EA.
L3900WPT	48 lbs.	\$690.00

Double Honey Filter

A stainless steel tank with internal basket that holds filter nylon bag. An overflow feature will return extra honey to the original source. Messy overflows are eliminated. Two side outlets are provided. Upper for heavy particles and lower for filtered clean, pure honey. (110 volt)



ITEM#	SHIP WT.	PRICE EA.
L200-2	66 lbs.	\$799.00

Filter Baskets

Extra Filter Baskets for double filter. (Baskets Only.)



Filter Bags

Extra Bags for filter baskets. (Bag only)



ITEM#	SHIP WT.	PRICE EA.
L200-FB	19 lbs.	\$175.00
L200-FC	2 lbs.	40.00

Continuous Wax Separator

Developed by Bill Mraz and Bill Maxant, this remarkable machine is designed to separate wax from the honey using centrifugal force.

Auger your slurry to the center opening of the drum. (heat not required) The heavy honey is spun to the outer wall of the drum, while the dry wax accumulates around the honey towards the center opening. A reciprocating cutter shaves away the wax while clean honey spins through the ports in the bottom of the drum. This machine is a must for any large scale operation. Expect about three drums per hour. Customers report 10,000 lbs in 8 hours! (110 volt)



ITEM#	SHIP WT.	PRICE EA.
L7000	Truck 400 lbs.	\$12,000.00

Gravity Clarifier

Stainless steel double wall tanks with a baffle. The heat adjustable Chromalux unit warms the water in the outer jacket and the honey flows easily to the pump under the baffle while the impurities rise to the surface. They are then stopped by the baffle and easily skimmed off. Unit includes outlet standpipe and glass water gauges. (110 volt)



ITEM#	SHIP WT.	PRICE EA.
L300-36	Truck	\$1,275.00

Mobil Uncapping Tank

The solution for uncapping and frame storage. Uncap directly into the removable cappings basket, remove capping spike when finished, and cover with lid. Let your cappings sit and drip dry in the sloped drain tray. Our tank will hold 22 frames with the basket in place, or 33 frames without the basket. 100% stainless steel. Uncapping Tank/Tray: 47" L x 33" H x 20" W. Lid, honey gate, and removable legs with wheels included! Shown with optional uncapping



ITEM#	SHIP WT.	PRICE EA.
LMutt	Truck	\$950.00



L1700MBP

Motorized Chain Uncapper

This chain uncapper eliminates the need for knives or capping scratchers. The motor automatically starts when the frame is lowered and after revolving stainless steel chains remove the caps it automatically stops once the frame is raised. (110 volt)

ITEM#	SHIP WT.	PRICE EA.
L1700MBP	Truck 125 lbs.	\$2,700.00

Double Drain Tank



ITEM#	SHIP WT.	PRICE EA.
L1800	Truck 45 lbs.	\$399.00

Uncapping Spinners

These uncapping spinners are great for the serious beekeeper that wants to speed up their extracting operation. Depending on the size of your operation you can choose from the Jr. Cappings Spinner that is great for 100 hives or less or the Sr. Cappings Spinner for the medium size beekeeper with more than 100 hives. No more waiting days for honey to drip, after only a few hours of spinning you have more honey to sell and light fluffy wax cappings to process. It's constructed of 20-gauge stainless steel and features a 1/2 hp motor and a simple pull out basket for easy cleaning. One of these spinners will make the perfect addition to your beekeeping operation. (Commercial size spinner also available. Please call for more information.) (110 volt)



Jr. Cappings Spinner

ITEM#	SHIP WT.	PRICE EA.
L1200-JR	Truck 150 lbs.	\$1,700.00



Sr. Cappings Spinner

ITEM#	SHIP WT.	PRICE EA.
L1200-30	Truck 300 lbs.	\$4,500.00



ITEM#	SHIP WT.	PRICE EA.
L1700	Truck 400 lbs.	\$7,400.00

Uncapper-Spinner Combo

This combo is made up of our Sr. Capping Spinner and our motorized chain uncapper mounted on rails to allow it to roll back for easy removal of dried cappings. This combo is the ultimate addition to your operation.



Maxant Honey Equipment



Rossman Apiaries Inc. has been selected as the only approved Maxant Dealer for the South. We now carry a full line of Maxant Products, and invite you to browse through, select what you need, and give us a call.

These products are made with heavy duty 18 or 20 gauge stainless steel and are welded with robots.

2-Frame Radial Extractors

The Maxant 2-Frame extractor is an ideal extractor, but can easily be upgraded to a 4-frame hand extractor or 6/9-frame hand extractor by simply swapping out the basket. It can even be upgraded to a power driven unit! The tank is built to last a lifetime, just like all Maxant equipment. Don't waste your hard earned money on throw away products. Buy Maxant and grow your hobby with no loss on your original investment. (110 volt)



ITEM#	SHIP WT.	PRICE EA.
L3100H-2 (2-frame hand extractor)	50 lbs.	\$340.00
L3100B-4 (4-fr. conversion basket)	18 lbs.	149.00
L3100M (motor conversion)	9 lbs.	399.00
L3100S (Stand)	9 lbs.	60.00

4-Frame Radial Extractors

The Maxant 4-frame extractor is another great beginner's extractor. It can easily be upgraded to a 6/9-frame hand extractor by simply swapping out the basket. It can even be upgraded to a power driven unit! The tank is built to last a lifetime, just like all Maxant equipment. Don't waste your hard earned money on throw away products. Buy Maxant and grow your hobby with no loss on your original investment. (110 volt)



ITEM#	SHIP WT.	PRICE EA.
L3100H-4 (4-frame hand extractor)	50 lbs.	\$450.00
L3100B-6/9 (conversion basket)	18 lbs.	199.00
L3100M (motor conversion)	9 lbs.	399.00
L3100S (Stand)	9 lbs.	60.00

6/9-Frame Radial Extractors

This 6/9-frame extractor comes in both hand crank and electric motor versions. It is constructed of 20-gauge #4 polished stainless steel with a conical bottom for maximum drainage. You will be amazed at the remarkable engineering of the 100% stainless steel inner basket which can hold up to 9-frames. It can extract 6-medium or shallow frames radially and/or (at the same time) 3-deeps, medium, or shallow frames tangentially. (110 volt)



ITEM#	SHIP WT.	PRICE EA.
L3100H (6/9-frame hand extractor)	50 lbs.	\$570.00
L3100P (6/9-frame power extractor)	55 lbs.	900.00
L3100S (Stand)	9 lbs.	60.00

Bottling Tank Accessories

Immersion Heater (L1700W)

110V Immersion Heater with 9' power cord and pilot light. (Also available in 220V upon special request)



SS No Drip Valve (LNDV-1)

This self-closing, 1" diameter, solid T303 stainless steel valve is machined in our own factory. To open, pull down on the lever. To close, release the lever and the spring loaded stainless plunger seats against the O-rings closing the 5/8" exit port. You can bottle hundreds of jars per hour.



No Drip Valve Heater (LNDV-H)

This heater wraps around the Maxant Stainless Steel No Drip Valve to keep it warm and flowing smooth even during those cold winter months. (110 volt)



Tank Top Strainer (L600)

Stainless Steel strainer that fits in the top of the Maxant bottling tanks. (Also Available for 42gal and 84gal tanks upon special request)



ITEM#	SHIP WT.	PRICE EA.
L1700W	10 lbs.	\$153.00
LNDV-1	10 lbs.	179.00
LNDV-H	3 lbs.	95.00
L600-2TTS (for 600-2)	44 lbs.	299.00
L600-3TTS (for 600-3)	63 lbs.	399.00

Bottling Tanks

No honey house of any volume should be without a bottling tank and these Maxant tanks are considered some of the best in the industry. Not only are these 18-gauge double wall heated tanks great for storing and bottling recently extracted honey but they are also great for decrystallizing stored honey. They all come with a chromalux immersion heater, site water gauge, thermometer, brass plugs, cover, and the famous Maxant no drip valve. So don't ask yourself do I need one of these amazingly crafted tanks instead ask which size tank do I need. (110 volt)



(All of our tanks come with stainless steel)

ITEM#	SHIP WT.	PRICE EA.
L600-2 (16 gal.)	80 lbs.	\$1,249.00
L600-3 (25 gal.)	90 lbs.	1,549.00
L600-5 (42 gal.)	110 lbs.	1,899.00
L600-10 (84 gal.)	160 lbs.	3,099.00

20-Frame Radial Extractor

This Maxant 20-frame extractor is a workhorse machine that is constructed of 20-gauge #4 polished stainless steel. With a conical bottom that drains the honey to the honey gate this machine will hold 10-deep frames or 20-medium or shallow frames. It comes with a rugged GE 1/4 hp motor and features a manually adjusted speed control. It can be purchased with bolt down lugs or heavy duty legs. (110 volt)



ITEM#	SHIP WT.	PRICE EA.
L1400PL	Truck 150 lbs.	\$1,700.00

20-Fr. w/Heavy Duty Legs

Glass Containers (Prices subject to change without notice.)



Classic Glass Honey Jars

Available in 8 oz., 16 oz., and 32 oz. **X**
(Lids not included. Sold separately below.)

ITEM#	DESC.	LID SIZE	SHIP WT.	PRICE
Q171 (8 oz.)	Case/24	48 mm	8 lbs.	\$13.71
Q172 (16 oz.)	Case/12	48 mm	7 lbs.	6.80
Q173 (16 oz.)	Case/24	48 mm	15 lbs.	13.33
Q175 (32 oz.)	Case/12	63 mm	10 lbs.	10.54

(Call for Qty. price on 26 or more cases)



2 1/2 lb. Square Comb Honey Jar

(Lids not included. Sold separately below.) **X**

ITEM#	DESC.	LID SIZE	SHIP WT.	PRICE
Q182 (2 1/2 lbs.)	Case/12	89 mm	12 lbs.	\$15.37

(Call for Qty. price on 26 or more cases)



Muth Jar with Cork

Excellent for gift items and collectors. **X**
Corks are included.

ITEM#	DESC.	LID SIZE	SHIP WT.	PRICE
Q189 (16 oz.)	Case/12	Corks included	10 lbs.	\$15.71
Q190 (8 oz.)	Case/12	Corks included	7 lbs.	12.37
Q191 (4 oz.)	Case/36	Corks included	10 lbs.	29.00

(Call for Qty. price on 26 or more cases)



12 oz. Glass Skep Jars

Our new glass Skep jars are simply fantastic. What a wonderful new way to market your honey products! Perfect for creamed honey, mustards and other uses! Sold in cases of 12. **X**
(Lids not included. Sold separately below.)

ITEM#	LID SIZE	SHIP WT.	PRICE
Q125 (Case/12)	Lug lid	12 lbs.	\$10.69
Q58-LG (12 pk)	Lug lid		1.44

(Call for Qty. price on 26 or more cases)



Comb Honey Jar

Price includes metal lid. (63mm) **X**
(Lids not included. Sold separately below.)

ITEM#	DESC.	LID SIZE	SHIP WT.	PRICE
Q179 (16 oz.)	Case/12	63 mm	6 lbs.	\$6.21



16 oz. Mayo Pint Jar

(Lids not included. Sold separately below.) **X**

ITEM#	DESC.	LID SIZE	SHIP WT.	PRICE
Q181 (16 oz.)	Case/12	70G	7 lbs.	\$6.27

(Call for Qty. price on 26 or more cases)



32 oz. Mayo Quart Jar

ITEM#	DESC.	LID SIZE	SHIP WT.	PRICE
Q176 (32 oz.)	Case/12	70G	12 lbs.	\$7.76

(Call for Qty. price on 26 or more cases)

12-Pk Lids for Glass Containers

Item#	Lid size	Color/Style	Qty	Price
Q38-WM	38-MM	White-Metal	12PK	\$1.08
Q38-GM	38-MM	Gold-Metal	12PK	1.45
Q38-WP	38-MM	White-Plastic	12PK	.95
Q48-WM	48-MM	White-Metal	12PK	1.60
Q48-GM	48-MM	Gold-Metal	12PK	1.50
Q48-WP	48-MM	White-Plastic	12PK	.99
Q58-LG	58 MM	Gold-Metal Lug	12PK	1.44
Q63-WM	63-MM	White-Metal	12PK	2.52
Q63-GM	63-MM	Gold-Metal	12PK	2.40
Q63-WP	63-MM	White-Plastic	12PK	1.56
Q70-WM	70-G	White-Metal	12PK	2.52
Q70-GM	70-G	Gold-Metal	12PK	2.40
Q70-WP	70-G	White-Plastic	12PK	2.52
Q89-WM	89-MM	White Metal	12PK	5.40
Q89-GM	89-MM	Gold-Metal	12PK	4.32
Q89-WP	89-MM	White-Plastic	12PK	3.36

Glass Containers

(Prices subject to change without notice.)



10 oz. Bar-B-Que Jar
(Lids not included. Sold separately pg. 30.)

ITEM#	DESC.	LID SIZE	SHIP WT.	PRICE
Q178 (10 oz.)	Case/12 (Call for Qty. price on 26 or more cases)	38 mm	7 lbs.	\$6.34



12 oz. Salad Dressing Jar
(Lids not included. Sold separately pg. 30.)

ITEM#	DESC.	LID SIZE	SHIP WT.	PRICE
Q180C (12 oz.)	Case/12 (Call for Qty. price on 26 or more cases)	38 mm	7 lbs.	\$6.49



5 lb. Round Jar
(Lids not included. Sold separately pg. 30.)

ITEM#	DESC.	LID SIZE	SHIP WT.	PRICE
Q177 (5 lb.)	Case/6 (Call for Qty. price on 26 or more cases)	70G	9 lbs.	\$15.23



Jelly Mason Jar
(Lids not included. Sold separately pg. 30.)

ITEM#	DESC.	LID SIZE	SHIP WT.	PRICE
Q192 (8 oz.)	Case/12 (Call for Qty. price on 26 or more cases)	70G	6 lbs.	6.99



Woozy Bottles
(Lid included)

ITEM#	DESC.	SHIP WT.	PRICE
Q110 (5 oz.)	Case/12	5 lbs.	\$6.19
Q111 (10 oz.)	Case/12 (Call for Qty. price on 26 or more cases)	7 lbs.	7.81



Wine or Syrup Bottles
(Lid included)

ITEM#	DESC.	SHIP WT.	PRICE
Q122/6 (375ml)	Case/6	4 lbs.	\$4.94
Q122/12 (375ml)	Case/12	8 lbs.	8.23
Q123 (750ml)	Case/12 (Call for Qty. price on 26 or more cases)	12 lbs.	13.99



Retro Syrup Bottle
(Lid included)

ITEM#	DESC.	SHIP WT.	PRICE
Q197 (12 oz.)	Case/12 (Call for Qty. price on 26 or more cases)	9 lbs.	\$10.50



1 1/2 oz. Sampler
(Lid included)

ITEM#	DESC.	SHIP WT.	PRICE
Q202	Case/160 (Call for Qty. price on 26 or more cases)	25 lbs.	\$56.31

Plastic Containers

Prices subject to change without notice.



Classic Plastic Honey Jars

40 oz., 32 oz., 16 oz., 8 oz., 38 mm

ITEM#	DESCRIPTION	SHIP WT.	PRICE
Q137 (40 oz.)	Case/6 (with yellow flip-top lids)	2 lbs.	\$7.86
Q137C (40 oz.)	Case/120 (no lids)	65 lbs.	103.99
Q126 (32 oz.)	Case/12 (with yellow flip-top lids)	2 lbs.	10.83
Q126C (32 oz.)	Case/168 (no lids)	65 lbs.	108.02
Q154 (16 oz.)	Case/12 (with yellow flip-top lids)	2 lbs.	7.79
Q154C (16 oz.)	Case/321 (no lids)	65 lbs.	128.19
Q135 (8 oz.)	Case/12 (with yellow flip-top lids)	2 lbs.	7.04
Q135C (8 oz.)	Case/550 (no lids)	65 lbs.	152.58

Panel Bears

(38 mm)

- Q164 (12 oz.) (red or yellow spout)
- Q164C (12 oz.) (no spout)
- Q149 (8 oz.) (red or yellow spout)
- Q149C (8 oz.) (no spout)
- Q163 (6 oz.) (red or yellow spout)
- Q163C (6 oz.) (no spout)



ITEM#	DESC.	SHIP WT.	PRICE
Q164	Case/12	2 lbs.	\$7.29
Q164C	Case/400	65 lbs.	118.58
Q149	Case/12	2 lbs.	7.95
Q149C	Case/525	42 lbs.	151.66
Q163	Case/12	2 lbs.	7.65
Q163C	Case/500	42 lbs.	201.09

Embossed Bee

- Q148 (40 oz.) (white lid) (58 mm)
- Q147 (16 oz.) (white lid) (43 mm)



ITEM#	DESC.	SHIP WT.	PRICE
Q147	Case/24	3 lbs.	\$14.75
Q148	Case/6	3 lbs.	7.75

Plastic Cut Comb Box

Excellent product visibility. Use with comb cutter (Page 23).
Dimensions - 4 1/8 x 4 1/8 x 1 1/8



ITEM#	DESC.	SHIP WT.	PRICE
Q200	(12/Case 4x4)	5 lbs.	\$15.80
Q200C	(100/Case 4x4)	25 lbs.	115.00
Q201	(12/Case 2x4)	5 lbs.	10.75
Q201C	(100/Case 2x4)	25 lbs.	117.00



2 oz. Honeybear
with yellow lid
(Label not included)

ITEM#	DESC.	SHIP WT.	PRICE
Q140	Flat/160	7 lbs.	80.00
Q140C	Case/800	26 lbs.	279.27
Q140D	Case/12	1 lb.	6.50



Decor Container
3 lb. Jug
(38 mm lids fit this)
Label not included.

ITEM#	DESC.	SHIP WT.	PRICE
Q146	CS/6 w/lids	4 lbs.	8.21
Q146C	CS/126 (no lids)	18 lbs.	106.14

Industrial Gallon

(white lid) (38 mm)



ITEM#	DESC.	SHIP WT.	PRICE
Q183	Case/4	5 lbs.	\$8.64



Decor Container
16 oz. Squeeze
(38 mm lids fit this)
Label not included.

ITEM#	DESC.	SHIP WT.	PRICE
Q145	CS/12 w/lids	4 lbs.	9.31
Q145C	CS/364 (no lids)	23 lbs.	151.82

Can be used inverted with Q160 lid or rightside up with Q155 lid.



Decor Container
5 lb. Jug
(38 mm lids fit this)
Label not included.

ITEM#	DESC.	SHIP WT.	PRICE
Q158	CS/6 w/lids	4 lbs.	\$9.28
Q158C	CS/72 (no lids)	20 lbs.	77.64

Yard Rent Jugs

5 lb. Yard Rent Jug



ITEM#	SHIP WT.	PRICE EACH
Q240 (6 pk)	2 lbs.	\$8.43



Upside Down Bottle

Q153-16 (16 oz.) (yellow lid)
Q153-16C (16 oz.) (no lids)
Uses Q160 lids.

ITEM#	DESC.	SHIP WT.	PRICE
Q153-16	Case/12	4 lbs.	\$9.16
Q153-16C	Case/364	68 lbs.	149.35

Opaque 3 lb.

(38 mm)

Q161 (3 lbs.) (white lid)
Q161C (3 lbs.) (no lid)



ITEM#	DESC.	SHIP WT.	PRICE
Q161	Case/6	3 lbs.	\$7.75
Q161C	Case/150	95 lbs.	85.64

Plastic Skop

Q167 (24 oz.) (white flip-top lid) (38 mm)
Q167C (24 oz.) (no lids)



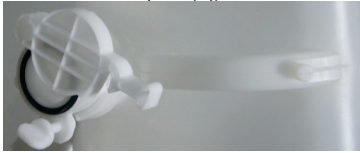
ITEM#	DESC.	SHIP WT.	PRICE
Q167	Case/12	3 lbs.	\$8.14
Q167C	Case/236	65 lbs.	75.35

60 lb. Square Container



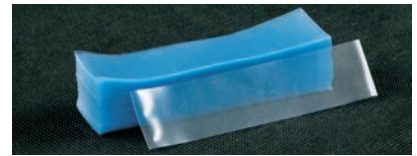
Square Jug Honey Gate

Turn a 60 lb. square plastic jug into a bottling jug with this 1 1/2" honey gate. This honey gate will screw directly onto one of our 60 lb. square jugs.



Shrink Wrap

You can quickly slide these seals over your honey jars and shrink them with an inexpensive heat gun. Clear, tamper proof and leak proof.



ITEM#	DESCRIPTION	PRICE EA.
Q109-4	4 oz Muth - 50	\$3.00
Q109-8	8 oz Muth - 50	3.00
Q109-16	16 oz Muth - 50	3.00
Q112	38mm - 50	3.00
Q113	48mm - 50	3.00
Q114	63mm - 50	3.00
Q115	70mm - 50	3.00

ITEM#	SHIP WT.	PRICE EA.
Q150 (60 lb. Square Container)	3 lbs.	1-10 \$8.50 10+ 8.00
Q151 (Faucet)	1 oz.	2.50
Q150BX (Shipping Carton)	2 lbs.	2.50
M81D (1 1/2" Honey Gate)	1 lb.	14.00

Extra Lids

ITEM#	DESCRIPTION	SHIP WT.	PRICE EA.
Q119	White or Gold Plastisol (38mm)		\$.09
Q119C	Case/3300	40 lbs.	313.18
Q120	White or Gold Plastisol (48mm)		.13
Q120C	Case/2400	40 lbs.	305.04
Q121	White Plastisol (63mm)		.21
Q121C	Case/1300	34 lbs.	276.93
Q124	White Plastisol (70G) Metal Lids		.21
Q124C	Case/725 (Specify Color)	20 lbs.	150.31
Q131	White Plastic Linerless (48mm)		.07
Q131C	Case/1700	20 lbs.	115.19
Q132	White Plastic Linerless (63mm)		.09
Q132C	Case/900	20 lbs.	82.44
Q133	White Plastic Linerless (70RG)		.15
Q133C	Case/560	20 lbs.	85.54
Q155	Flip-tops - black, yellow, white, red, golden yellow, metallic gold (38 mm)		.09
Q155C	Case/1700	23 lbs.	130.00
Q159	Hi-Flo Spouts (38 mm) red and yellow		.15
Q159C	Case/1000	15 lbs.	148.00
Q160-Y	2" Yellow Flip-top Plastic Lids		.20
Q160C-Y	Case/850 (Yellow)	20 lbs.	167.11
Q160-R	2" Red Flip-top		.20
Q160C-R	Case/850 (Red)	20 lbs.	167.11
Q118	White Plastic Linerless (89RM)		.28
Q118C	Case/580	20 lbs.	161.85
Q117	White Plastic with Seal (38RS)		.02
Q117C	Case/2900	20 lbs.	130.20

Muth Jar Gift Box

These Muth gift set boxes come in three different sizes. You can select the 4oz - 3qty, 8oz -3qty or the 16oz -2qty box. They come in bundles of 12 and are shipped flat and require some easy assembly.

(Jars not included)



BX16M



BX4M



BX8M



ITEM#	SHIP WT.	PRICE EACH
BX16M	1 lb.	\$2.15
BX16M-C (12 pk bundle)	6 lbs.	\$24.50
BX8M	1 lb.	\$2.25
BX8M-C (12 pk bundle)	6 lbs.	\$24.50
BX4M	1 lb.	\$2.15
BX4M-C (12 pk bundle)	6 lbs.	\$24.50

Honey Labels

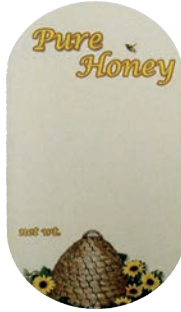
The small labels are 1 3/4" x 3", the large labels are 2 5/8" x 4 1/2". 12 oz. bear is 1 5/8" x 1 15/16" and the 6 oz. bear is 1 7/16" x 1 15/16". 250/Roll. **Small Wt. - 10 oz., Large Wt. 1 lb., 12 oz. Bears Wt. - 1 lb., 6 oz. Bears Wt. - 10 oz.**

Field of Flowers



ML83 - \$19.00
Round Jar Labels
ML83A - \$16.00
Small Oval - 1 3/4" x 3"
ML83B - \$19.00
Large Oval - 2 5/8" x 4 1/2"
ML83C - \$14.00
12 oz. Bear
ML83D - \$13.00
6 oz. Bear

Sunflower Bee Skep



ML81 - \$19.00
Round Jar Labels
ML81A - \$16.00
Small Oval - 1 3/4" x 3"
ML81B - \$19.00
Large Oval - 2 5/8" x 4 1/2"
ML81C - \$14.00
12 oz. Bear
ML81D - \$13.00
6 oz. Bear

Golden Bee Skep



ML90 - \$19.00
Round Jar Labels
ML90A - \$16.00
Small Oval - 1 3/4" x 3"
ML90B - \$19.00
Large Oval - 2 5/8" x 4 1/2"
ML90C - \$14.00
12 oz. Bear
ML90D - \$13.00
6 oz. Bear

Vase Label



ML75A - \$16.00
Ship Wt. 1lb.
3" x 1 3/4"
ML75B - \$19.00
Ship Wt. 1lb.
4" x 2 5/8"
ML75C - \$15.00
Ship Wt. 1lb.
1 3/4" x 1 1/4"

Skep Label



ML76A - \$16.00
Ship Wt. 1lb.
3" x 1 3/4"
ML76B - \$19.00
Ship Wt. 1lb.
4" x 2 5/8"
ML76C - \$15.00
Ship Wt. 1lb.
1 3/4" x 1 1/4"

Victorian Label



ML79A - \$16.00
Ship Wt. 1lb.
3" x 1 3/4"
ML79B - \$19.00
Ship Wt. 1lb.
4" x 2 5/8"
ML79C - \$15.00
Ship Wt. 1lb.
1 3/4" x 1 1/4"

Sundance Label



ML78A - \$16.00
Ship Wt. 1lb.
3" x 1 3/4"
ML78B - \$19.00
Ship Wt. 1lb.
4" x 2 5/8"
ML78C - \$15.00
Ship Wt. 1lb.
1 3/4" x 1 1/4"

Retro Label



ML77A - \$16.00
Ship Wt. 1lb.
3" x 1 3/4"
ML77B - \$19.00
Ship Wt. 1lb.
4" x 2 5/8"
ML77C - \$15.00
Ship Wt. 1lb.
1 3/4" x 1 1/4"

Nutrition Facts



ML88 - \$9.00
1 9/16" x 2 3/4" Wt. 8 oz.
(250 Per Roll)

Granulation

Granulation: Most natural honey will form into sugar. To liquefy, place container in hot water.
Botulism: Never feed honey to infants under 1 year of age.

ML87 - \$10.00
1 1/4" x 3/4" Wt. 6 oz.
(500 Per Roll)



Vase
ML75D (Skep Jar) - \$16.00
(Ship wt. 1 lb.)



Victorian
ML79D (Skep Jar) - \$16.00
(Ship wt. 1 lb.)

Signs



Z221 - Beehive Protection Required Zone Sign (12 oz.) \$16.00



Z222 - Bee (12 oz.) Crossing Sign (Metal) \$17.00



Z223 - Beekeeper Car Tag (12 oz.) (Metal) \$14.00



Z224 - Beekeeper Parking Sign (12 oz.) (Metal) \$20.00



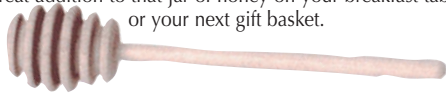
Z225 - Beekeeper Zone Sign (12 oz.) (Metal) \$19.00



Z214 - Local Honey for Sale Sign 24" x 18" (corrugated plastic w/metal stand) \$16.00

Honey Dipper

This old fashioned wooden honey dipper will make a great addition to that jar of honey on your breakfast table or your next gift basket.



ITEM#	SHIP WT.	PRICE EACH
M82	8 oz.	\$2.00

Miniature Hive Kit

This Miniature Hive Kit stands 4 1/2" tall x 4" wide x 5 1/8" long once it is assembled. This hive kit comes with unassembled and unpainted bottom board, hive body, super, flat cover, and frames. This is a great project for a family or school class, and once it is assembled and painted, it's a great teaching aid, gift or conversation piece for your home or office. (Honey Bear not included. Only pictured for size comparison.)



A105 (assembled)	\$40.00
SHP WT – 3 lbs	
A106 (unassembled)	\$26.00
SHP WT – 3 lbs	

M91B Tiny Mite Smoker

This little smoker is just what every beekeeper needs. It is an actual functioning smoker that is great for a child or grandchild that wants to help with the bees and it would also make a great pen holder for your desk. Either way it's an awesome conversation starter.



3 lbs. \$22.00

Smoker Keychain Light

This 2" tall novelty smoker keychain would make a perfect gift for that special beekeeper in your life. It would also go great in your own pocket or purse. Not only does it make a statement but it has a bright LED light as a bonus.



ITEM#	SHIP WT.	PRICE EACH
Z105	1 lb.	\$5.00

Lip Balm Kit

Create your own lip balms with our new Lip Balm Kit! Simply heat, stir and pour! An easy and inexpensive way to get started making a wide variety of lip care products.

Kits includes:

- 12 - .125 oz (3.54 g) Clear Plastic Pots with White Caps
- 12 - .15 oz (4.25 g) White Plastic Tubes with Caps
 - 4 oz (62.37 g) Packet Beeswax Beads
 - 4 oz (118.29 ml) Bottle of Almond Oil
 - 4 oz (118.29 ml) Jar of Shea Butter
 - 6 Stir Sticks
 - 12 Plain Labels for Plastic Pots
 - 12 Plain Labels for Plastic Tubes
 - 1 Pair of Disposable Gloves
 - 4 - 3 ml Plastic Droppers
 - 4 Gourmet Flavoring Oils - 1 gram each:
 - tangerine
 - strawberry
 - pineapple
 - peppermint

ITEM#	SHIP WT.	PRICE EACH
Z123	5 lb.	\$26.00

- Orange
- Double Honey
- Lemon
- Apple
- Strawberry

WITH A BURST OF HONEY!



ITEM#	SHIP WT.	PRICE EA.
Z217	1 lb. Bag	\$4.00
Z217A	29 lb. Box	80.00

"Bee Somebody" Gourd Ornaments

These one-of-a-kind "Bee Somebody" gourd ornaments are sure to create a buzz with the bee lover in your life! "Bee Somebody" gourd ornaments are 100% handcrafted in Kentucky, USA.



Worker Bee



Queen Bee



Nurse Bee

ITEM#	SHIP WT.	PRICE EA.
Z100		
Beekeeper Gourd	1lb.	\$28.00
Z101		
Queen Bee Gourd	1lb.	\$28.00
Z102		
Nurse Bee Gourd	1lb.	\$28.00



Honey Bee Soap Kit

Soap making is a cinch with our Honey Bee Soap Kit! Our kit includes everything you need, just melt and pour! Handmade soap with a decorative honeycomb design is the perfect gift for any occasion. Additional fragrances sold separately.

Kit includes:

- 2 lb (907.19 g) tray of detergent-free Honey Soap Base
- 2 oz (59.15 ml) bottle Baby Bee Buttermilk fragrance oil
 - 2 oz (59.15 ml) bottle Honey Bear fragrance oil
- 8 - 2-piece Bee & Honeycomb clamshell molds
 - Dark Gold Shimmer color cube
 - 2 Pipettes

ITEM#	SHIP WT.	PRICE EACH
Z125	5 lb.	\$37.00

Bee Toys

Honeybee Minis

These mini bees could be in midflight or getting ready to land on a flower. Let them land in your artwork on use them as decorations or party favors. Black and yellow with wings outspread, these honeybee figures are about the size of a quarter.



New

ITEM#	SHIP WT.	PRICE EA.
Z32	1 lb.	\$0.50

Life Cycle Toy Set

Hardworking honeybees rapidly transition through their life cycle, with only 21 days from egg to adulthood. Honeybee larvae and pupae, like those of many other insects, are almost unrecognizable compared to adult bees. These realistically sculpted figures allow a peek inside the hive.



New

ITEM#	SHIP WT.	PRICE EA.
Z31	1 lb.	\$10.00

Honeybee Toy

Honey bees are some of the hardest working creatures in the animal kingdom. Hand painted and designed with superior accuracy, this honey bee is 5.5 inches long and 7 inches wide.



New

ITEM#	SHIP WT.	PRICE EA.
Z30	1 lb.	\$10.00

Bee Salt & Pepper Shakers

The perfect addition to any beekeepers kitchen.



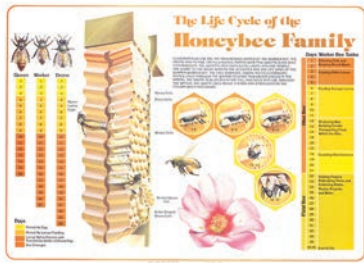
New

ITEM#	SHIP WT.	PRICE EA.
Z106	1 lb.	\$6.00

Wall Charts



Wall charts are good for the classroom, honeybee exhibits, or just an added attraction for your office or home.



X75 - Life Cycle of the Honeybee
Ship wt. 2 lbs. **\$14.00**

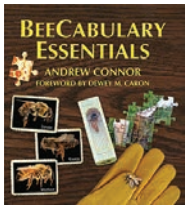


X76 - The Beekeepers World
Ship wt. 2 lbs. **\$14.00**



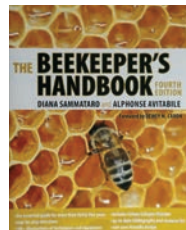
X77 - The Beekeepers Year
Ship wt. 2 lbs. **\$14.00**

Books



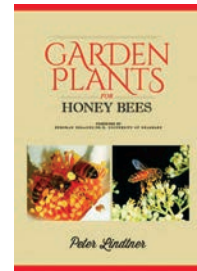
X33 - BeeCabulary Essentials
BeeCabulary Essentials answers the question "What Is It?" Organized into subject areas and loaded with amazing photographs and artwork.

A must for every beekeeper's library and perfect for the person starting with bees. Features a lay-flat binding to keep the book open for study.
Ship wt. 1 lb. **\$30.00**



X01 - The Beekeeper's Handbook
Written by Diana Sammataro and Alphonse Avitabile. This 190 page manual is one of the best books on the market for the beginner to the commercial beekeeper.

Ship wt. 2 lbs. **\$30.00**



X21 - Garden Plants for Honey Bees
Garden Plants for Honey Bees by Peter Lindtner is the culmination of a lifetime of photography, beekeeping, and horticulture. With each plant accompanied by a simple pollen and nectar production rating guide derived from his careful observations.
Ship wt. 1 lb. **\$34.00**



X83 - Complete Idiots Guide To Beekeeping
The Complete Idiot's Guide(r) to Beekeeping has all the information a beginning beekeeper needs to know to start a hive and keep it buzzing.

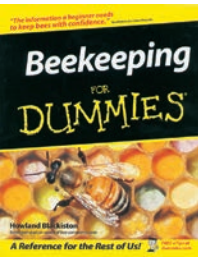
Expert beekeepers Dean Stiglitz and Laurie Herboldsheimer, owners of Golden Rule Honey, take readers step by step through the entire process-from information on the inhabitants of a hive and how it works to collecting bees, keeping them healthy, raising a queen, harvesting honey and wax, and storing hives for the off- season.

Ship wt. 2 lbs. **\$15.00**

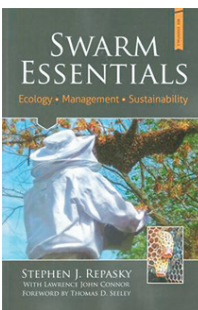


X23 - Hive Management
Offers concise, up-to-date information on the whole range of beekeeping tasks:

- How to prevent, control, and capture swarms.
- What you can tell from an outside inspection of your hive.
- When and how to harvest honey
- How to successfully requeen
- The problem signs to look for when you open the hive



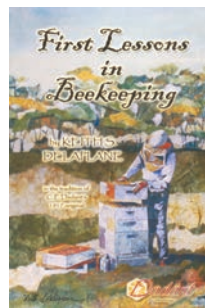
X17 - Beekeeping For Dummies
As with all the "Dummies" series this book is a must for the beginner. It is written by Howland Blackiston and put in words that everyone can understand.
Ship wt. 2 lbs. **\$22.00**



X50 -Swarm Essentials
Swarming is a powerful instinct, one that most successful beekeepers have encountered by their second year. Swarm Essentials outlines the ramifications of swarming behavior (highlighting the often overlooked benefits), proven management techniques, and how to

recover and even prosper from a successful swarm attempt. Author Stephen J. Repasky's inaugural publication marks the latest addition to the Essentials series and is an excellent read for any beekeeper who hopes to make it past their first year.

Ship wt. 1 lb. **\$25.00**



X09 - New Edition First Lessons in Beekeeping X09S (Spanish Edition)

An excellent book for those wanting to start keeping bees. Also available in Spanish. 125 pgs
Ship wt. 1 lb.



X24 - Honeybees and Beekeeping (Book)
A year in the life of an apiary Keith S. Delaplane, Ph.D. This book compliments the DVD below.
Ship wt. 2 lbs **\$22.00**

Books



X87 - Honey Bee Biology and Beekeeping

Dr. Dewey M. Caron puts bee biology in terms that can easily be understood by all who read this book. It explains the when, why, and how things are done to successfully manage bee colonies. This book has over 350 pages in hard cover.

Ship wt. 5 lbs.

\$55.00



X13 - Honeybee Diseases and Pests

Honeybee Diseases and Pests. Prepared by the Canadian Association of Professional Apiculturists, this book helps the beekeeper to recognize and/or prevent serious diseases. Good for any beekeeper's collection of bee books.

Ship wt. 1 lb.

\$15.00



X26 - Queen Rearing the "Best" Way

This video is a must-have for the first time queen breeder, as well as the experienced queen breeder. The methods shown here use a time tested gimmick free biological approach to queen rearing.

Not only does it present you with fundamental queen rearing techniques, grafting, building cell starters and cell finishers, it does so in an easy to follow format, so you can start queen rearing today.

Ship wt. 1 lb.

\$20.00



X28 - Honey Bee Removal

Cindy Bee and Bill Owens A step-by-step guide to safely and sanely removing honey bees.

Softcover **\$20.00**
Ship wt. 1 lb.



X39 - Honey Plants of North America

This paperback book tells all about honey plants, where they grow, what they look like, what kind of honey they produce, and when they bloom. Covers over 1,000 plants.

Ship wt. 2 lbs. **\$24.00**



X20 - Honey Study Prints

12 full color 13" x 18" pictures to aid any person in giving a program on bees. The back of the picture is filled with information about the picture on the opposite side.

Ship wt. 2 lbs.

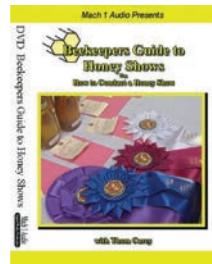


X90 - My Hive Tool DVD

This video is a must-have for the beginner beekeeper, as well as the experience beekeeper. It is the perfect short course for bee clubs. Not only does it present you with basic beekeeping

techniques, it will also give you the tools you need to get started the right way.

New

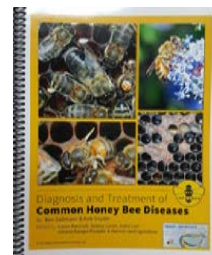


X49 - Beekeepers Guide to Honey Shows DVD

For many beekeepers, the high point of the beekeeping season is exhibiting their honey at the various honey shows. Honey shows

take place all over the country and all around the world. To see just what a honey show is, we need to take a step back in history. Back to a day without telephones, tv, or radio. How did the bee farmer let its customers know they had the finest honey?

Ship wt. 1 lb. **\$15.00**



X16 - Diagnosis and Treatment of Common Honey Bee Diseases

Bee Informed Partnership has done some tremendous work helping beekeepers nationwide.

They have now released

a disease manual with disease description (AFB, EFB, Chalkbrood, PMS, SBV), symptoms and treatment methods in both English and Spanish with detailed, hi resolution photo examples of each. Printed on plastic coated heavy stock paper.

Ship wt. 1 lb. **\$33.50**



X81 - Queen Rearing Essentials Second Edition

This book will help you if you only need a few queens a year, or if you want to produce hundreds or thousands. Dr. Connor has added sixty more pages of techniques and queen management ideas.

Ship wt. 1 lb. **\$25.00**



X04 - Rearing Queen Honeybees

Written by Dr. Roger Morse. Step-by-step instructions on how to raise queens.

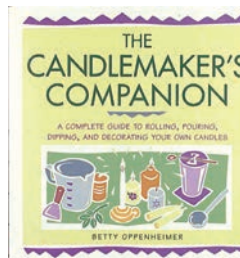
Ship wt. 1 lb **\$20.00**



X46 - The Complete Mead Maker

Veteran beverage hobbyist Ken Schramm introduces the novice to the wonders of mead. With easy-to-follow procedures and simple recipes, he shows how you can quickly and painlessly make your own mead at home.

Ship wt. 1 lb. **\$19.95**



X48 - The Candle Makers Companion

From A to Z, this complete candle making guide by Betty Oppenheimer covers it all! Everything you wanted to know about additives, roll-

ing, pouring, dipping and decorating is in this book, including a section on storing and repair. Detailed illustrations can be found on virtually every page.

Ship wt. 1 lb. **\$18.95**



X94 - Bee Equipment Essentials

The Essentials Series' answer to "How do I build a ____?". Rich with clear, colorful, concise diagrams and photographs, Ed Simon's guide is an invaluable resource for do-it-yourself, hands on beekeepers and anyone who ever wondered, "How do they make this stuff?"

*2019 Italian Queen Bee Prices

QUANTITY	1-9	10-24	25-99	100+
PRICE EA.	\$30.00	\$28.00	\$26.00	\$25.00

Shipping & Handling Charges for Queen Orders Only

UPS Next Day Air Delivery

QUEENS QUANTITY	Zone 1 & 2 UNINSURED	Zone 3 UNINSURED	Zone 4 UNINSURED	Zone 5 UNINSURED	Zone 6 UNINSURED	Zone 7 UNINSURED	Zone 8 UNINSURED
1 -- 18	\$18.43	\$23.30	\$30.72	\$33.80	\$35.32	\$38.46	\$39.27
19 -- 30	\$18.59	\$28.22	\$33.07	\$35.93	\$38.38	\$39.84	\$43.38
39 -- 60	\$20.22	\$27.17	\$36.08	\$40.34	\$43.06	\$45.53	\$46.98
61 -- 80	\$21.41	\$28.22	\$39.78	\$43.70	\$45.15	\$49.02	\$50.66
81 -- 99	\$21.77	\$23.34	\$40.53	\$44.08	\$45.52	\$49.41	\$51.09

Battery Boxes

50	\$28.99	\$35.13	\$49.95	\$55.66	\$57.76	\$61.17	\$64.00
100	\$29.39	\$37.31	\$53.15	\$61.08	\$63.45	\$66.58	\$68.80

Add \$12.60 for Battery Box

2019 Package Bees are Sold Out!

Orders are taken starting November 1st, for the following Spring.

- Package bees picked up in Moultrie are F.O.B. shipping point.
- Add shipping to package if ordering by UPS
- No shipment will be made until paid in full, unless prior arrangements have been made. Visa, Mastercard, American Express or Discover also accepted. All credit card orders will be charged when booked. **A 15% cancellation fee on all processed orders.**
- Orders are shipped in sequence of booking. Give 1st and 2nd choices of date when you wish shipment to be made. Shipping dates are not guaranteed but shipped according to seasonal weather variations.
- Personal check, money order or cashiers check accepted in U.S. currency only. Out of country payments should be made by International or World Money Orders or by check drawn on U.S. Bank.
- Deposit on large orders before shipping date is held.

ORIGINATING FROM ZIP CODES BEGINNING WITH: 317

Zip Code Prefixes	Zone	Zip Code Prefixes	Zone	Zip Code Prefixes	Zone	Zip Code Prefixes	Zone	Zip Code Prefixes	Zone	Zip Code Prefixes	Zone
005--	5	267-268	5	327-329	3	471-	4	598-599	8	778-789	5
006-009	6	270-289	4	330-334	4	472-474	5	600-635	5	790-794	6
010-012	5	290-292	3	335-339	3	475-477	4	636-639	4	795-796	5
013-059	6	293-	4	340-	4	478-497	5	640-676	5	797-812	6
060-119	5	294-295	3	341-342	3	498-499	6	677-	6	813-816	7
120-123	6	296-297	4	344-	2	500-599	5	678-	5	820-	6
124-127	5	298-306	3	346-347	3	510-513	6	679-	6	821-	7
128-129	6	307-	4	349-	4	514-539	5	680-685	5	822-823	6
130-238	5	308-312	3	350-368	3	540-545	6	686-693	6	824-832	7
239-243	4	313-315	2	369-393	4	546-	5	700-725	4	833-	8
244-	5	316-317	1	394-395	3	547-548	6	726-727	5	834-	7
245-253	4	318-319	3	396-397	4	549-	5	728-	4	835-838	8
254-	5	320-	2	398-	1	550-575	6	729-738	5	840-863	7
255-259	4	321-	3	399-	3	576-	7	739-	6	864-	8
260-	5	322-	2	400-409	4	577-584	6	740-754	5	865-885	6
261-264	4	323-	1	410-	5	585-593	7	755-756	4	889-999	8
265-	5	324-325	3	411-427	4	594-596	8	757-775	5		
266-	4	326-	2	430-470	5	597-	7	776-777	4		

UPS Ground Service

LBS.	ZONES							
	2	3	4	5	6	7	8	
1	\$13.17	\$13.17	\$13.37	\$13.71	\$13.99	\$14.10	\$14.23	
2	\$13.17	\$13.82	\$14.40	\$14.59	\$14.98	\$15.35	\$15.53	
3	\$13.28	\$14.17	\$14.88	\$15.26	\$15.64	\$15.99	\$16.49	
4	\$13.57	\$14.38	\$15.42	\$15.86	\$16.15	\$16.76	\$17.36	
5	\$13.66	\$14.56	\$15.70	\$16.27	\$16.62	\$17.19	\$17.96	
6	\$13.47	\$14.28	\$15.36	\$15.87	\$16.26	\$16.83	\$17.38	
7	\$13.92	\$14.49	\$15.52	\$16.20	\$16.45	\$17.13	\$17.95	
8	\$14.06	\$14.72	\$15.76	\$16.40	\$16.78	\$17.48	\$18.36	
9	\$14.22	\$14.93	\$15.90	\$16.49	\$17.02	\$17.97	\$19.03	
10	\$14.40	\$14.94	\$15.96	\$16.79	\$17.26	\$18.69	\$19.93	
11	\$14.78	\$15.16	\$16.06	\$16.86	\$17.65	\$19.79	\$20.88	
12	\$14.93	\$15.56	\$16.16	\$17.03	\$18.09	\$20.37	\$21.74	
13	\$15.16	\$15.80	\$16.39	\$17.35	\$18.47	\$21.42	\$22.79	
14	\$15.40	\$15.97	\$16.39	\$17.52	\$19.21	\$22.40	\$23.78	
15	\$15.46	\$16.29	\$16.64	\$18.07	\$19.97	\$22.92	\$24.88	
16	\$15.67	\$16.50	\$16.74	\$18.15	\$20.43	\$23.65	\$25.46	
17	\$15.85	\$16.83	\$16.98	\$18.63	\$21.06	\$24.76	\$26.22	
18	\$15.87	\$16.98	\$17.21	\$19.14	\$21.83	\$25.15	\$27.43	
19	\$15.99	\$17.27	\$17.44	\$19.59	\$22.13	\$25.66	\$28.13	
20	\$16.14	\$17.48	\$17.73	\$20.28	\$22.70	\$26.40	\$29.17	
21	\$16.22	\$17.69	\$17.99	\$20.13	\$23.19	\$26.94	\$29.83	
22	\$16.45	\$17.91	\$18.57	\$20.81	\$24.08	\$27.72	\$30.89	
23	\$16.57	\$18.25	\$18.99	\$21.40	\$24.78	\$28.46	\$31.90	
24	\$16.78	\$18.67	\$19.42	\$21.91	\$25.51	\$29.02	\$32.94	
25	\$16.91	\$18.81	\$19.59	\$22.38	\$26.00	\$30.22	\$33.95	
26	\$17.34	\$19.26	\$20.18	\$22.89	\$26.75	\$31.04	\$34.90	
27	\$17.63	\$19.59	\$20.33	\$23.18	\$27.43	\$31.49	\$35.61	
28	\$17.84	\$19.92	\$21.14	\$24.15	\$28.67	\$32.86	\$36.95	
29	\$18.10	\$20.20	\$21.59	\$24.40	\$29.34	\$33.54	\$37.60	
30	\$18.23	\$20.41	\$22.03	\$25.10	\$29.67	\$33.82	\$38.86	
31	\$18.46	\$20.68	\$22.04	\$25.11	\$30.03	\$34.26	\$39.44	
32	\$18.49	\$20.72	\$22.31	\$25.28	\$30.50	\$34.76	\$40.47	
33	\$18.56	\$21.05	\$22.89	\$26.20	\$31.39	\$35.52	\$41.07	
34	\$18.76	\$21.40	\$23.44	\$26.73	\$31.88	\$36.33	\$42.41	
35	\$19.00	\$22.08	\$23.86	\$27.24	\$32.52	\$37.11	\$43.39	
36	\$19.20	\$22.09	\$24.19	\$27.98	\$33.19	\$38.19	\$44.14	
37	\$19.54	\$22.46	\$24.56	\$28.47	\$33.77	\$39.22	\$44.88	
38	\$19.75	\$22.72	\$24.97	\$29.02	\$34.42	\$39.69	\$45.61	
39	\$19.95	\$23.06	\$25.42	\$29.28	\$35.15	\$40.70	\$46.43	
40	\$19.96	\$23.12	\$25.47	\$29.55	\$35.76	\$40.71	\$46.71	
41	\$20.15	\$23.71	\$26.01	\$30.14	\$36.43	\$41.78	\$47.59	
42	\$20.23	\$24.12	\$26.79	\$30.70	\$37.17	\$42.74	\$48.21	
43	\$20.56	\$24.21	\$26.84	\$31.48	\$38.24	\$43.73	\$48.95	
44	\$20.78	\$24.56	\$27.58	\$32.19	\$38.52	\$44.55	\$49.40	
45	\$20.79	\$24.67	\$27.59	\$32.21	\$39.06	\$45.69	\$50.13	
46	\$21.12	\$24.68	\$28.08	\$32.70	\$39.96	\$46.11	\$50.87	
47	\$21.20	\$24.93	\$28.44	\$32.89	\$40.09	\$46.91	\$51.61	
48	\$21.21	\$25.13	\$28.73	\$33.61	\$40.62	\$47.29	\$52.34	
49	\$21.21	\$25.14	\$28.74	\$33.62	\$41.05	\$48.03	\$52.61	
50	\$21.22	\$25.15	\$28.75	\$33.66	\$41.17	\$48.13	\$53.33	
51	\$20.86	\$24.69	\$28.21	\$33.01	\$40.34	\$47.13	\$52.21	
52	\$20.87	\$24.70	\$28.22	\$33.01	\$40.35	\$47.14	\$52.22	
53	\$20.88	\$24.71	\$28.23	\$33.06	\$40.36	\$47.15	\$52.22	
54	\$20.89	\$24.73	\$28.27	\$33.24	\$40.36	\$47.15	\$52.71	
55	\$20.89	\$24.73	\$28.28	\$33.64	\$40.37	\$47.16	\$53.25	
56	\$20.90	\$24.89	\$28.30	\$34.03	\$40.38	\$47.17	\$53.85	
57	\$21.17	\$25.01	\$28.57	\$34.71	\$40.39	\$47.18	\$54.34	
58	\$21.18	\$25.02	\$28.78	\$35.02	\$40.42	\$47.19	\$55.22	
59	\$21.46	\$25.22	\$29.12	\$35.03	\$41.06	\$47.74	\$55.58	
60	\$21.62	\$25.60	\$29.49	\$35.53	\$41.39	\$47.97	\$55.90	
61	\$21.94	\$26.22	\$29.50	\$36.15	\$41.71	\$48.22	\$56.20	
62	\$22.29	\$27.08	\$29.91	\$36.71	\$41.95	\$48.87	\$56.51	
63	\$22.31	\$27.09	\$29.92	\$36.72	\$42.19	\$48.94	\$56.83	
64	\$22.75	\$27.72	\$30.55	\$37.04	\$42.80	\$49.24	\$57.60	
65	\$22.94	\$27.92	\$30.56	\$37.04	\$43.12	\$49.33	\$57.69	
66	\$23.18	\$28.31	\$30.57	\$37.07	\$43.15	\$49.46	\$57.80	
67	\$23.41	\$28.33	\$30.86	\$37.10	\$43.45	\$49.68	\$57.92	
68	\$23.55	\$28.96	\$32.08	\$37.55	\$43.65	\$49.93	\$57.93	
69	\$23.76	\$28.97	\$32.08	\$38.05	\$43.85	\$49.94	\$58.20	
70	\$23.84	\$29.01	\$32.40	\$38.46	\$44.62	\$49.95	\$58.66	

Index

Apiguard	19	Frame Perch	12	Para Moth	17
Apistan	19	Frame Savers.....	14	Parts of Mod. Hive	2
Apivar	19	Frame Spacers	14	Pest Control.....	20
B-Funnel	14	Frame Spacing Tool	14	Pheromones.....	19
Bee Brush	12	Frames	5	Pine Equipment	8
Bee Blanket	25	Frame Parts	5	Plastic Cut Comb Boxes.....	32
Bee Escape.....	25	Frame Wire	13	Plastic Frames.....	5
Beekeeping Kits	3, 4	Fume Pad.....	25	Pollen Substitute	17
Bee Life.....	21	Fumagilin B.....	17	Pollen Trap.....	9
Bees	38	Gamma Lid	26	Postage Info	38
Bees Wax Mold	25	Gardstar	19	Postal Shipping Chart.....	38
Beetle Traps.....	19	General Supply Info.....	39	Propolis Trap.....	9
Books.....	36, 37	Gifts.....	35	Queen Catcher	11
Boot Bands.....	23	Gloves	23	Queen Cell Nursery	11
Bottling Bucket.....	27	Heavy Duty Hive Stand	9	Queen Marking Tube.....	11
Bottling Tanks.....	27, 29	Helmet.....	24	Queen Marking Pen.....	11
Bottom Boards	7, 9	Hive Beetle Traps	20	Queen Rearing Supplies	11
Bucket Bench.....	26	Hive Bodies.....	4, 8	Queens.....	38
Bucket Dolly	26	Hive Stand	7, 9	Refractometer.....	25
Candy.....	35	Hive Staples.....	14	Rossman Cap	21
Capping Scratcher	26	Hive Straps	13	Ross Rounds	9
Capping Spinner.....	28	Hive Tools	12	Shrink Wraps	33
Cell Cups	11	Honey Dipper.....	36	Signs	34
Cell Starter Kit	11	Honey B Healthy.....	17	Slatted Racks	6
Charts.....	36	Honey B-Gone.....	25	Smokers.....	15
Checkmite.....	20	Honey Gates.....	27, 29	Smoker Fuel.....	15
Chemicals	17, 18, 19, 20	Honey Labels	9, 34	Spur Embedder	12
Clothing.....	21, 22, 23, 24	Honey Robber	25	Sting Relief	22
Comb Capper	26	Honey Soap Kit	35	Strainers.....	27
Comb Cutter	22	Hopguard	19	Study Prints	37
Containers	30, 31, 32, 33	Inner Covers	6, 10	Supers (cypress).....	4
Covers.....	6, 8, 9	Lid Removal Tool.....	26	Support Pins.....	12
Cover Parts.....	6	Lids.....	30, 33	Swarm Traps & Swarm Bait	20
Double Screen	7	Lip Balm Kit	35	Sweat Bands	23
Drum Gaskets.....	14	Lubricant.....	25	Tanks.....	27, 29
DVDs	37	Maxant Equipment.....	28, 29	Toys	35
Entrance Closer.....	13	Medications	17	Transferring Needle	11
Entrance Reducer.....	7	Megabee	17	Treatment Drawer	17
Excluders	7	Menthol	18	T-Shirts.....	21
Excluder Cleaner	13	Metal Rabbets	14	Uncapper	26, 28
Extractors	27, 29	Micron Filters.....	27	Uncapping Knives	26
Eyelet Punch.....	12	Mouse Guard.....	13	Uncapping Plane	26
Eyelets	12	Moving Screens.....	7, 10	Uncapping Tub	26
Feeders	16	Nails	14	UPS Shipping Chart	38
Fire Ant Killer	19	Nucs	10, 11	Veils.....	22, 23, 24
Fischer's Bee Quick	25	Oxalic Acid, Oxalic Acid Vaporizer.....	18	Varroa Easy Check	18
Form Board.....	13	Pail Heater	25	Varroa Sticky Boards.....	18
Foundation.....	5	Pail Opener	26	Wax Melter.....	28
Frame Cleaner Tool	13	Pail Perch.....	26	Wax Tube Fastener.....	13
Frame Grip.....	12	Pallet Clips.....	14	Zone Chart.....	38

General Information

Concerning Supply Orders

PRICES MAY CHANGE WITHOUT NOTICE.

INFORMATION: Select grade material contains no knots. Commercial grade material contains sound knots. All supers have Rabbeted Joints and 5/8 frame set.

We have available 8 and 10 frame equipment. Cypress & Pine.

NOTICE: All equipment is shipped unassembled with nails included on orders of less than 50 unless otherwise noted.

TERMS: Cash, check or money order must accompany order. VISA, MasterCard, American Express and Discover accepted.

Our prices are FOB Moultrie and subject to change without notice.

ADDITIONAL CHARGES: For each COD received for collection - \$12.00; For each package with a declared value over \$100 - 85 cents for each additional \$100 or fraction thereof.

RETURNS: Check all orders immediately upon receipt and contact us within 15 business days on any discrepancies or we cannot be responsible for errors. **Errors that occur due to our shipping department, we will assume shipping costs both ways.** Errors occurring due to your ordering mistake are your responsibility. Orders returned will incur a 15% restocking fee, plus you pay return shipping charges.

SUBSTITUTIONS: We reserve the right to substitute items or parts with like items of equal or greater value if item or part is unavailable due to shortage or manufacturer changes.



HOURS: Mon - Fri 8 to 4:30 (EST) (Saturday 8 to 12 April & May only)
FAX LINE OPEN 24 HRS / 7 DAYS: 229-985-0209

DAYS CLOSED

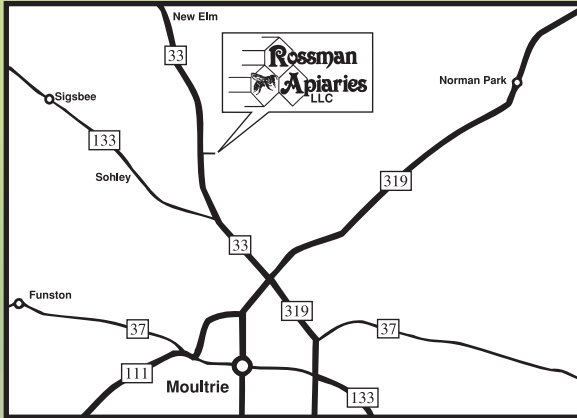
New Years Day - January 1st
Memorial Day - May 27th
Independence Day - July 4th
Labor Day - September 2nd
Thanksgiving - November 28th-29th
Christmas - December 24th - January 2nd

**PRSRT STD
U.S. POSTAGE
PAID
PERMIT #41
ALBANY, GA**

Mailing Address:
P.O. Box 909
Moultrie, GA 31776

Physical Address:
3364-A Georgia Highway 33 North
Moultrie, GA 31768

**IF YOU'RE EVER IN OUR AREA,
COME BY AND SEE US!**



3364-A GA Hwy 33 N. • Moultrie, GA 31768
1-800-333-7677 • Fax 1-229-985-0209
Email: rossmanbees@gabees.com
www.GAbees.com

www.GAbees.com

Designed and printed by
Colson Printing Co., Valdosta, Ga.