

BEE SUPPLY CATALOG

2019

496 Yellow Banks Road | North Wilkesboro, NC 28659



Growing our
love of bees
for 43 years!



888-848-5184

info@millerbeesupply.com

www.millerbeesupply.com

Directions & Hours



Hours of Operation:

March 1 - May 31

Monday - Friday 8:00 am - 5:00 pm

Saturday 8:00 am - 12:00 pm

June 2 - February 28

Monday - Friday 8:00 am - 4:30 pm

Saturday Closed

Holiday Closings:

New Years Day, Memorial Day, July 4th,
Labor Day, Thanksgiving (Nov. 28-29),
and Christmas (Dec 23 at noon - Jan 2)

496 Yellow Banks Road

North Wilkesboro, NC 28659

Phone: 336-670-2249

888-848-5184

info@millerbeesupply.com



Directions to Our Bee Supply Store:

From Winston-Salem take 421 North to Exit 282 North Wilkesboro / Statesville exit. Turn right. Follow signs to Hwy 18 North. Go 6 miles, just past Mulberry School. Turn right on Yellow Banks Road. We are 1/4 mile on the right.

From Boone take Hwy 421 South. Turn left on Hwy 16. Go 4 miles. Turn right on Pleasant Home Church Road. Go to the end of the road and make a left. Go 3 miles to the end of the road and turn right on Hwy 18 South. Go one mile. Turn left on Yellow Banks Road. We are 1/4 mile on the right.

www.millerbeesupply.com

About Our WoodenWare

All of our Woodenware is handcrafted using only the finest selected East Coast White Pine. Through our personalized selection process we are able to obtain a better grade of lumber, dramatically reducing the incidences of large knots and other structural defects. This ensures a quality product with minimal waste, which of course helps keep the cost down. We use only U.S. standard sizes in our construction. Hives and

supers have finger joint corners and predrilled nail holes to help eliminate splitting during assembly. All of our grades of Woodenware are manufactured in the same way by machines designed by owner Presley Miller. His years of experience in machine design and beekeeping have given us the opportunity to provide the best quality Woodenware available.

Wood Quality Descriptions:

Select Woodenware: Our finest quality wood with very small knots. Products made with Select grade have precise fitting joints that are hand cut for the very best quality.

Commercial Woodenware: Is good quality wood with tight knots. This grade is the Commercial Beekeepers #1 choice. An outstanding value! Our Top Seller!

Budget Woodenware: The most economical choice with multiple solid or loose knots, functional cracks and knots in fingers. No imperfections that interfere with the structure and functionality of the box are accepted.



Woodenware

Telescoping Top

Inner Cover

Shallow Super

Shallow Super Frames

Queen Excluder

Medium Super (Illinois Super)

Medium Super Frames

Hive Body

Hive Body Frames

Bottom Board

Entrance Reducer

Hive Stand



Beginner Kits

New to beekeeping and not sure what all you need to start? We have put together a couple of kits that will get you started. All you'll need are the bees! These kits include ALL the woodenware, nails, wax and the basic tools needed to work your bees. Kits are available in 10 frame or 8 frame. Please specify at the time of your order.

Sorry No Substitutions

Basic Beginner Kit

1 Complete Hive:

- Telescoping Top
- Inner Cover
- 1- 9 1/2" Hive Body
- 10 or 8- 9 1/8" frames
- Pine Bottom Board or Screen Bottom Board
- Entrance Reducer

1 Complete Medium Super

- 1 - 6 5/8" Medium Super
- 10 or 8 - 6 1/4" Frames

Plastic Entrance feeder

4x7 Smoker with Shield

1/2 lb Smoker Fuel

Economy Gloves (specify size XS-XL)

Pull Down Hat and Veil Combo

Hive Tool

Bee Brush

10 or 8 sheets 8 1/2" Black Pierco Foundation Snap-In or Crimp Wire Foundation

10 or 8 Sheets 5 5/8" White Pierco Foundation Snap-In or Crimp Wire Foundation

First Lessons in Beekeeping Book (available in Spanish)

Assembly instructions and Nails



Cat# M100

\$233.15

SHP WT - 44 LBS

Deluxe Starter Kit

1 Complete Hive:

- Telescoping Top
- Inner Cover
- 1- 9 1/2" Hive Body
- 10 or 8- 9 1/8" frames
- Pine Bottom Board or Screen Bottom Board
- Entrance Reducer

1 Complete Medium Super

- 1 - 6 5/8" Medium Super
- 10 or 8 - 6 1/4" Frames

Wood/Metal Entrance Feeder

1 - 4x7 Smoker with Shield

1/2lb Smoker Fuel

Goatskin Gloves (specify XS-XL)

Apollo Half Suit (specify S-5XL)

Hive Tool

Bee Brush

10 or 8 sheets 8 1/2" Black Pierco Snap-in Foundation or Crimp Wire Foundation

10 or 8 sheets 5 5/8" White Pierco Snap-in Foundation or Crimp Wire Foundation

The Backyard Beekeeper

Assembly instructions and nails



Cat# M200

\$292.95

SHP WT - 46 lbs

10 Frame WoodenWare Unassembled

10 FRAME HIVES & SUPERS

Complete 10 Frame Hive



- 1 - Telescoping Top
 - 1 - Inner Cover
 - 1 - 9 1/2" Hive Body
 - 10 - 9 1/8" Frames
 - 1 - Pine Bottom Board
 - 1 - Entrance Reducer
- Assembly Instructions & Nails are included.
Foundation is not included.



9 1/2 x 16 1/4	Unassembled	1 - 9	10 - 24	
Cat# W900-C	Select Grade	\$81.25	\$74.30	SHP WT - 30 lbs
Cat# W920-C	Commercial Grade	\$77.15	\$70.00	SHP WT - 30 lbs

10 Frame Hive Body

9 1/2 x 16 1/4	Unassembled	1 - 9	10 - 49	50 - 200	200 +	
Cat# W900	Select Grade	\$19.95	\$19.30	\$16.65	\$15.90	SHP WT - 9 lbs
Cat# W920	Commercial Grade	\$16.55	\$16.20	\$14.40	\$13.95	SHP WT - 9 lbs
Cat# W930	Budget Grade	\$13.90	\$13.35	\$11.70	\$11.30	SHP WT - 9 lbs



10 Frame Medium Super

6 5/8 x 16 1/4	Unassembled	1 - 9	10 - 49	50 - 200	200 +	
Cat# W600	Select Grade	\$15.95	\$14.95	\$12.95	\$11.45	SHP WT - 6 lbs
Cat# W620	Commercial Grade	\$13.85	\$13.35	\$11.35	\$9.90	SHP WT - 6 lbs
Cat# W630	Budget Grade	\$10.95	\$9.85	\$8.80	\$8.25	SHP WT - 6 lbs



10 Frame Shallow Super

5 11/16 x 16 1/4	Unassembled	1 - 9	10 - 49	50 - 200	200 +	
Cat# W500	Select Grade	\$14.85	\$13.80	\$12.80	\$10.80	SHP WT - 5 lbs
Cat# W520	Commercial Grade	\$13.40	\$12.95	\$11.35	\$9.90	SHP WT - 5 lbs
Cat# W530	Budget Grade	\$10.75	\$9.65	\$8.60	\$8.05	SHP WT - 5 lbs



Frames & Nails not included.

10 Frame Equipment

Telescoping Tops

Our 10 Frame Tops are made with 3/4" x 1 3/4" pine side rails, 3/8" plywood, covered with aluminum. (Fully Assembled)



		1 - 24	25 - 50	51 - 100	100 +	
Cat# W180	Telescoping Tops	\$20.90	\$19.85	\$18.80	\$18.45	<i>SHP WT - 8 lbs</i>

Inner Covers



Made with 3/4" x 1 1/16" white pine frame with 1/4" plywood center. The frame makes the inner cover stronger and easier to remove from the hive. The center hole is designed to accept a bee escape. It comes with an escape hole and air vent. (Fully Assembled)

		1 - 24	25 - 50	51 - 100	100 +	
Cat# W185	Inner Covers	\$10.45	\$10.20	\$9.85	\$9.45	<i>SHP WT - 4 lbs</i>
Cat# W188	Frame Only	\$4.90				<i>SHP WT - 1 lb</i>

Migratory Cover

Migratory covers are useful for transporting hives. They are flush with the hive on the long sides, meaning you can pack hives closer together when moving. This cover is made from a low grade lumber, however, when covered with aluminum it makes an excellent top. It can be used with or without an inner cover. (Fully Assembled)



		1 - 24	25 - 50	51 - 100	100 +	
Cat# W301	Migratory Cover	\$16.95	\$16.55	\$16.00	\$15.80	<i>SHP WT - 8 lbs</i>

Moving Screen



Provides ventilation when moving your bees. The moving screen can serve as an inner cover during summer time to provide more air flow for your bees.

Cat# W186 | \$11.75 | *SHP WT - 3 lbs*

10 Frame Equipment

Hive Bottoms



Assembled Hive Bottom

Our 10 Frame Hive Bottoms are made with 3/4" tongue and grooved pine with 2" x 3/4" dadoed rails. The hive bottoms are reversible for 1/2" or 3/4" entrance. Our assembled bottom is Commercial grade.

Pine Hive Bottoms		1 - 9	10-24	25-50	50+	
Cat# W190	Select Grade	\$14.95	\$14.05	\$13.65	\$13.45	SHP WT - 8 lbs
Cat# W192	Commercial Grade	\$13.85	\$12.85	\$12.15	\$11.55	SHP WT - 8 lbs
Cat# W193	Budget Grade	\$10.95				SHP WT - 8 lbs
Cat# W195	3 pc Rails	\$6.55				SHP WT - 3 lbs
Cat# W192-C	Assembled Hive Bottom	\$16.85				SHP WT - 8 lbs



Screen Bottom Boards

Recent studies have shown that a screen across the hive bottom board can help reduce Varroa mite population and help brood production. This also helps to provide ventilation for bees.

Cat# W198 | \$14.90 | SHP WT - 8 lbs

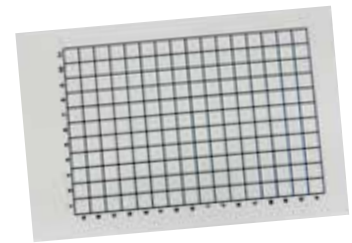


Hive Stands

****Ships Unassembled****

Our Hive Stands are made with 3/4" pine. They keep your hive off the ground and they give your bees a larger landing area prior to entering the hive. The hive bottom board stacks directly on top of the stand. SHP WT - 5 lbs

Cat# W200 | Select Grade | \$12.65



Sticky Board

Corrugated plastic boards used to monitor mite fall. It is printed with a grid that is numbered and lettered for easier counting. You can coat the board with Vaseline or Pam to catch the mites. Reusable.

Cat# M324 | \$4.95 | SHP WT - 1 lb

Cat# M324 5+ | \$4.70 | SHP WT - 1 lb

IPM Board

An IPM Board, or Integrated Pest Management Board, is used to help you determine the amount of mites in your colony. It is composed of a screen bottom with rails mounted underneath so you can slide in a sticky board (included.) Cover the sticky board with something like Pam or Vaseline so the mites stick to it. Sticky boards are made of corrugated plastic and can be washed and re-used. You can also use the rails to slide in plywood during the winter to close up your hive, without having to switch bottom boards.



Cat# W197 | \$20.82 | SHP WT - 8 lbs

8 Frame WoodenWare Unassembled

8 FRAME HIVES & SUPERS



The 8 frame hive was designed to make a smaller, lighter hive. It is much easier to lift an 8 frame super of honey, than it is to lift the 10 frame super of honey. If you have difficulty lifting the 10 frame units, this may be the hive you are looking for.

Complete 8 Frame Hive

- 1 - Telescoping Top
 - 1 - Inner Cover
 - 1 - 9 1/2" Hive Body
 - 8 - 9 1/8" Brood Frames
 - 1 - Pine Bottom Board
 - 1 - Entrance Reducer
- Assembly Instructions & Nails are included
SHP WT - 30 lbs
 Foundation Not Included



9 1/2 X 13 3/4	Unassembled	1 - 9	10 - 24
Cat# W8FC1	Select Grade	\$78.45	\$72.40
Cat# W8FC2	Commercial Grade	\$74.35	\$68.10

Hive Body, Select Grade



8 Frame Hive Body

SHP WT - 9 lbs

9 1/2 X 13 3/4	Unassembled	1 - 9	10 - 49
Cat# W8F91	Select Grade	\$19.95	\$19.30
Cat# W8F92	Commercial Grade	\$16.55	\$16.20

8 Frame Medium Super

SHP WT - 6 lbs

6 5/8 X 13 3/4	Unassembled	1 - 9	10 - 49
Cat# W8F61	Select Grade	\$15.95	\$14.95
Cat# W8F62	Commercial Grade	\$13.85	\$13.35

Frames & Nails are not included.

8 Frame Hive Stands

****Ships unassembled****

Our Hive Stands are made with 3/4" Pine. They keep your hive off the ground and gives your bees a larger landing area prior to entering the hive. The hive bottom board stacks directly on top of the stand.

SHP WT - 5 lbs



Hive Stand

Cat# W8200	Select Grade	\$12.65
------------	--------------	---------



Assembled Hive Bottom

8 Frame Hive Bottoms

SHP WT - 8 lbs

	Unassembled	1 - 9	10 - 24
Cat# W8190	Select Grade	\$14.95	\$14.05
Cat# W8192	Commercial Grade	\$13.95	\$12.85
Cat# W8195	3pc Rails (3 lbs)	\$6.55	
Cat# W8192C	Assembled Hive Bottom	\$16.85	

8 Frame Shallow Super

SHP WT - 5 lbs

5 11/16 X 13 3/4	Unassembled	1 - 9	10 - 49
Cat# W8F51	Select Grade	\$14.85	\$13.80
Cat# W8F52	Commercial Grade	\$13.40	\$12.95



8 Frame Hive Entrance Reducer

Our entrance reducers have two different size openings. Smaller opening for very weak hives and the larger openings are for winter use.

Cat# W8402	\$1.40	SHP WT - 9 oz
------------	--------	---------------

8 Frame Equipment

8 Frame Hive Feeder

Fully assembled and ready to use, has wire screen at the front, which allows the bees to access the syrup and keeps them from being able to get into it. This feeder keeps the bees from being able to get out through the top, so you can refill the feeder without smoking the bees. Holds approximately 2 gallons of syrup.



Cat# W8621 | \$23.80 | SHP WT - 8 lbs

8 Frame Two Sided Feeder

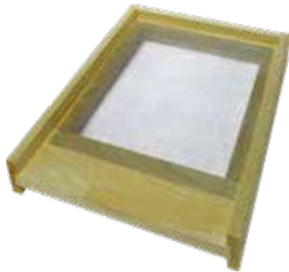
This feeder keeps the bees from being able to get out through the top, so you can refill the feeder without smoking the bees. The wire allows the bees access to the syrup which helps prevent drowning. Having two sides for syrup means you can use this if your hive is not sitting level.



Cat# W8619 | \$23.80 | SHP WT - 8 lbs

8 Frame Screen Bottom Boards

Recent studies have shown that a screen across the hive bottom board can help reduce Varroa mite population and help brood production. Another benefit is it helps to provide ventilation for the bees.



Cat# W8198 | \$14.90 | SHP WT - 8 lbs

8 Frame Queen Excluders

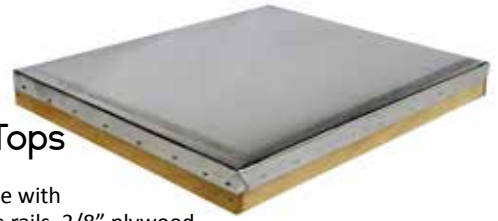
The 8 frame queen excluder is to keep the Queen out of the honey super but allow worker bees to pass through. Place between hive body and the honey super. The metal excluders are extra heavy welded to provide many years of service. The plastic excluder is flexible, durable, and corrosion proof.



Cat# M8188	8 Frame Metal Excluder	\$8.20	SHP WT 3 lbs
Cat# M8196	8 Frame Plastic Excluder	\$4.30	SHP WT 1 lb

8 Frame Telescoping Tops

8 Frame Tops are made with 3/4" x 1 3/4" Pine side rails, 3/8" plywood, covered with aluminum. **Fully Assembled**



	1 - 9	10-24	
Cat# W8180	\$20.90	\$19.85	SHP WT - 8 lbs

8 Frame Inner Covers

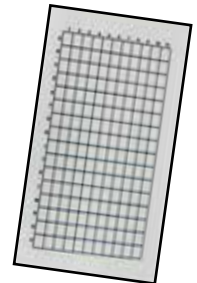
Our 8 Frame Inner Covers are made with 3/4" x 1 1/16" white pine frame with 1/4" plywood center. The frame makes the inner cover stronger and easier to remove from the hive. It comes with an escape hole and air vent. The center hole is designed to accept a bee escape. Place the inner cover on top with the 3/8" bee space facing up. **Fully Assembled**



	1 - 9	10 +	
Cat# W8185	\$10.45	\$10.20	SHP WT - 4 lbs

8 Frame Sticky Board

Corrugated plastic boards used to monitor mite fall. It is printed with a grid that is numbered and lettered for easier counting. You can coat the board with Vaseline to catch the mites. Reusable.



Cat# M8324	\$4.95	SHP WT - 1 lb
Cat# W8324 5+	\$4.70	SHP WT - 1 lb

8 Frame IPM Board

An IPM Board, or Integrated Pest Management Board, is used to help you determine the amount of mites in your colony. It is composed of a screen bottom with rails mounted underneath so you can slide in a sticky board (included.) Cover the sticky board with something like Pam or Vaseline so the mites stick to it. Sticky boards are made of corrugated plastic and can be washed and re-used. You can also use the rails to slide in plywood during the winter to close up your hive, without having to switch bottom boards.



Cat# W8197 | \$20.82 | SHP WT - 1 lb

Assembled Hives & Supers

Assembled hives and supers are great for starting new colonies quickly. They come fully assembled (unpainted) and ready to use. Just add bees from a swarm or package. They include #1 frames with Pierco snap-in foundation (Please specify black or white when ordering, or empty frames for wax foundation depending on what you order).

Commercial
Grade On
Assembled
Equipment



Assembled 9 1/2" Complete Hive Body Kit

- 1 - Telescoping Top
 - 10/8 - 9 1/8" Assembled #1 Frames
 - 1 - Assembled Bottom Board (specify solid or screen)
 - 1 - 9 1/2" Assembled Commercial Hive Body
 - 10/8 - **Pierco Snap-In Foundation** (specify black or white when ordering)
 - 1 - Entrance Reducer
 - 1 - Inner Cover
 - SHP WT - 35 lbs**
- Not eligible for free shipping.

		1 - 4	5 +
Cat# AF920	10 Frame Finger Joint	\$104.15	\$97.60
Cat# A8F920	8 Frame Finger Joint	\$98.13	\$91.58

Assembled 10 Frame Hive or Supers

Assembled #1 Frames with **Wedge Top Bar & Slotted Bottom Bar**
SHP WT - 17 lbs
 Foundation Not Included. Not eligible for free shipping.



Cat# A900	9 1/2" Hive Body	\$40.05
Cat# A600	6 5/8" Medium Super	\$36.85
Cat# A500	5 11/16" Shallow Super	\$36.40



Assembled 9 1/2" Hive Body Kit

- 1 - 9 1/2" Assembled Commercial Hive Body
 - 10/8 - 9 1/8" Assembled #1 Frames
 - 10/8 - **Pierco Snap-In Foundation**
 - SHP WT - 20 lbs**
- (Please specify black or white when ordering)
 Not eligible for free shipping.



		1 - 4	5 +
Cat# AF921	10 Frame Finger Joint	\$54.55	\$50.30
Cat# A8F921	8 Frame Finger Joint	\$48.53	\$44.25

Assembled 6 5/8" Medium Super (Illinois Super)

- 1 - 6 5/8" Assembled Commercial Super
 - 10/8 - 6 1/4" Assembled #1 Frames
 - 10/8 - **Pierco Snap-In Foundation**
 - SHP WT - 16 lbs**
- (Please specify black or white when ordering)
 Not eligible for free shipping.



		1 - 4	5 +
Cat# AF620	10 Frame Finger Joint	\$49.55	\$44.55
Cat# A8F620	8 Frame Finger Joint	\$44.01	\$39.01

Assembled 8 Frame Hive or Supers

Assembled #1 Frames with **Wedge Top Bar & Slotted Bottom Bar**
SHP WT - 17 lbs
 Foundation Not Included. Not eligible for free shipping.

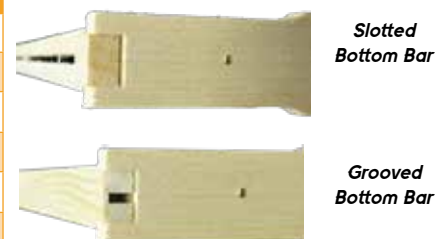


Cat# A8900	9 1/2" Hive Body	\$36.15
Cat# A8600	6 5/8" Medium Super	\$32.95
Cat# A8500	5 11/16" Shallow Super	\$32.50

Our frames are the product of many years of improvements. Many of which have been suggested by our customers. We believe that we have the best made frames on the market today. All our frames are made from premium white pine. The ends of the top bars are tapered for a snug fit when using Stoller 9 Frame Spacers. The end bars are made thicker for strength. The bottom bar has a wide groove for easy insertion of wax and there is a slight taper on each end for greater strength. (Nails are sold separately). We recommend gluing all connections with water resistant glue along with nailing to insure frames don't come apart when removing from Hive or Supers. **Grooved Top Bars are available upon request.** They are the same as our standard top bar except there is no wedge strip. A single groove is cut for the placement of foundation.

Wedge Top Slotted Bottom Bar	Wedge Top Grooved Bottom Bar	Size	Grade	Price is Per Multiples of 100			
				1 - 99	100 - 500	600 - 1000	1100 +
Cat# W901	Cat# W901-G	9 1/8"	#1	\$1.40	\$95.00	\$91.00	\$89.00
Cat# W903	Cat# W903-G	9 1/8"	#2	\$1.20	\$84.00	\$81.00	\$78.00
Cat# W601	Cat# W601-G	6 1/4"	#1	\$1.40	\$95.00	\$91.00	\$89.00
Cat# W603	Cat# W603-G	6 1/4"	#2	\$1.20	\$84.00	\$81.00	\$78.00
Cat# W501	Cat# W501-G	5 3/8"	#1	\$1.40	\$95.00	\$91.00	\$89.00
Cat# W503	Cat# W503-G	5 3/8"	#2	\$1.20	\$84.00	\$81.00	\$78.00

End bars and bottom bars are 3/8" thick



9 or 7 Frame Spacing Tools

Made of stainless steel or plastic. Perfectly spaces 9 frames inside your 10 frame hive body, or 7 frames inside of your 8 frame hive body by manually sliding between your frames.



Cat# M318	9 Frame Metal	\$20.75	SHP WT - 1 lb
Cat# M310	9 Frame Plastic	\$12.95	SHP WT - 1 lb
Cat# M309	7 Frame Plastic	\$12.95	SHP WT - 1 lb

Stroller 9 Frame Spacers

These devices are made with cut outs to receive 9 frames and space them evenly. They fit over the frame support area of hive bodies & supers.



Cat# M317	Price Per	\$0.75	SHP WT - 8 oz
Cat# M331	Quantity of 100	\$66.00	SHP WT - 8 lbs

L Shaped Rabbet

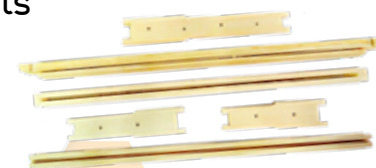
L Shaped Rabbet made from light gauge, pre-punched and pre-bent metal. These go over the rabbets on the boxes to help reduce propolis. L shaped rabbets also make great supports for IPM (sticky boards) in your screen bottom board.



Cat# M323	\$0.40	SHP WT - 2 oz
-----------	--------	---------------

Replacement Parts

Top Bar (specify wedge or grooved) End Bar (specify Hive, Medium or Shallow)



Cat# 207	Wedge Top Bar	\$0.50	SHP WT - 12 oz
Cat# 207	Grooved Top Bar	\$0.50	SHP WT - 12 oz
Cat# 208	End Bar	\$0.29	SHP WT - 6 oz
Cat# 209	Slotted Bottom Bar	\$0.30	SHP WT - 6 oz
Cat# 209G	Grooved Bottom Bar	\$0.30	SHP WT - 8 oz
Cat# 210	Foundation Wedge	\$0.19	SHP WT - 6 oz

Frame Nailing Jig

Our jig lets you assemble 10 frames at one time with any of our three sizes of frames. Keeps your frames square while you are assembling.



Cat# W614	\$36.25	SHP WT - 8 lbs
-----------	---------	----------------

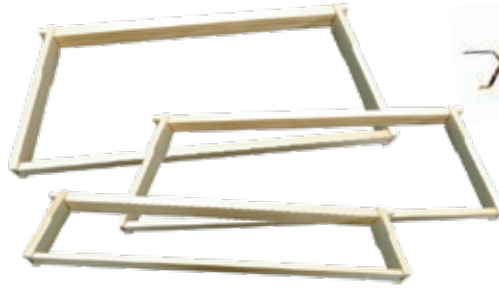
Frames

Assembled Frames

These assembled frames will come glued and stapled. These will save you many man hours in assembly and will get you ready for the spring nectar flow quickly. Frames come wedge top and slotted bottom for all three sizes, or grove top and grove bottom for hive and medium super sizes. Please specify at time of order. **Foundation not included.**

SHP WT - 1 lb

Not eligible for free shipping.



Franklin's Titebond II Wood Glue

8 oz bottle provides longer lasting woodenware and stronger joints, use prior to nailing your frames and hive body parts.

Cat# M114 | \$7.15 | SHP WT - 1 lb

Assembled Frame		1 - 99	100 +
Cat# WA901	Assembled Frames - Hive	\$1.95	\$1.69
Cat# WA901G	Assembled Frame GT and GB Hive	\$1.95	\$1.69
Cat# WA601	Assembled Frames - Medium	\$1.95	\$1.69
Cat# WA601-G	Assembled Frame GT & GB Medium	\$1.95	\$1.69
Cat# WA501	Assembled Frames - Shallow	\$1.95	\$1.69

Assembly Nails & Staples

SHP WT - 2 lbs

Hive Staple - An easy way to fasten the bottom board to the hive body.

5/8" Nail - For nailing foundation wedges.

3/4" Nail - For nailing foundation wedges.

1 1/4" Nail - For assembling frames.

#7 Galvanized Nail - For nailing together hives and supers.



Frame Hammer

Small and lightweight perfect for small spaces.

Cat# M224 | \$5.00 | SHP WT - 2 lbs

Catalog #	Nail Size	Amount Needed for Assembly	Estimated Qty. Per Pound	Price per Pound
Cat# M330	Galvanized #7	44 - Hive Body 32 - Medium Super 28 - Shallow Super	180	\$3.95
Cat# M332	1 1/4"	100 Frames/lb Nails	1,150	\$3.95
Cat# M333	3/4"		2,000	\$4.50
Cat# M335	5/8"		2,848	\$4.50
Cat# M334	Hive Staples	4 per Hive	125	\$6.95



Plastic Frames

When you choose Pierco Frames there is no assembly required. They use 100% FDA food grade plastic resin and they have 15% more foundation than a wood frame and foundation, therefore increasing brood and honey production. Pierco frames offer a consistent and uniform cell depth and they have a 10 year guarantee.



Pierco Frames

Available in White or Black
 9 1/8" Frames (52 Frames Per Case)
 6 1/4" Frames (72 Frames Per Case)



		Each	1 - 2 Cases	3 - 6 Cases	7 + Cases	CASE SHP WT
Cat# F904PW	9 1/8" White Frames	\$3.25	\$143.00	\$127.40	\$124.80	SHP WT - 47 lbs
Cat# F904PB	9 1/8" Black Frames	\$3.25	\$143.00	\$127.40	\$124.80	SHP WT - 47 lbs
Cat# F604PW	6 1/4" White Frames	\$3.05	\$172.80	\$151.20	\$147.60	SHP WT - 49 lbs
Cat# F604PB	6 1/4" Black Frames	\$3.05	\$172.80	\$151.20	\$147.60	SHP WT - 49 lbs

Pierco Snap-In Foundations



Available in White or Black and can be used with your wooden frames. Works best with Grooved Top and Grooved Bottom Bar frames. F570W and F580B are currently offered in Double Wax only. F570B and F580W are currently available in Single Wax only.

8 3/8" Sheets (100 Sheets Per Case) · 5 1/2" Sheets (100 Sheets Per Case)

		Each	1 - 6 Cases	7 + Cases	CASE SHP WT
Cat# F570W	8 3/8" Snap-in White	\$1.69	\$132.00	\$150.00	SHP WT - 46 lbs
Cat# F570B	8 3/8" Snap-in Black	\$1.45	\$132.00	\$130.00	SHP WT - 46 lbs
Cat# F580W	5 1/2" Snap-in White	\$1.27	\$108.00	\$106.00	SHP WT - 36 lbs
Cat# F580B	5 1/2" Snap-in Black	\$1.46	\$126.00	\$123.00	SHP WT - 36 lbs

Drone Comb Frames



Great way to manage mite infestation by periodically rotating out drone frames, helps build a healthier hive. Color coded a light green for easy identification.

Cat# F630	9 1/8" for Hive Body	\$3.45	SHP WT - 1 lb
-----------	----------------------	--------	---------------

Pierco Assembled Frames

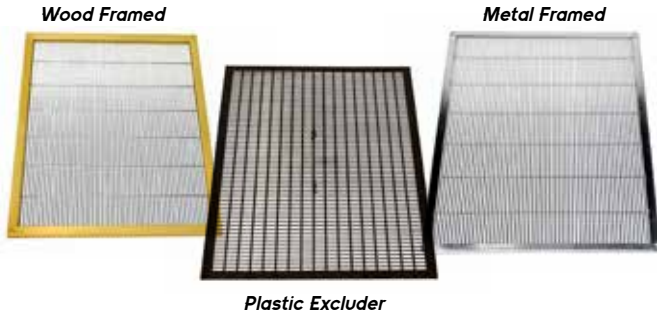
These frames will come glued and stapled with your choice of black or white Pierco Snap-in Foundation. They will save you many man hours in assembly and they will get you ready for the spring nectar flow quickly.

Not eligible for free shipping.

		1 - 100	101 +	
Cat# AW901	9 1/8" White Frames	\$3.40	\$3.01	SHP WT - 1 lb
Cat# AB901	9 1/8" Black Frames	\$3.40	\$3.01	SHP WT - 1 lb
Cat# AW601	6 1/4" White Frames	\$3.22	\$2.77	SHP WT - 1 lb
Cat# AB601	6 1/4" Black Frames	\$3.22	\$2.77	SHP WT - 1 lb



EXCLUDERS & REDUCERS



Queen Excluders

The main purpose of Queen Excluders is to keep the Queen out of the honey super, but allow worker bees to pass through. Place between hive body and honey super. A must if you're extracting. The metal excluders are extra heavy and provide many years of service. The plastic excluder is flexible, durable, and corrosion proof. Fully Assembled.

Cat# M186	Wood Framed	\$15.25	SHP WT - 4 lbs
Cat# M188	Metal Framed	\$8.20	SHP WT - 4 lbs
Cat# M196	Plastic Excluder	\$4.20	SHP WT - 8 oz
Cat# M206	Replacement Wood Frame	\$4.60	SHP WT - 9 oz



Entrance Guard

Our entrance guard prevents drones or queens from going either in or out of the hive. This could be used when hiving a new swarm once the queen is inside.

Cat# M191 | \$6.50 | SHP WT - 1 lb



Mouse Guard

The Mouse Guard is constructed from high quality stainless steel and is designed for a 10 frame hive. Place the mouse guard in the entrance of your hive in order to prevent unwanted mice from entering the hive. The 3/8" holes are the right size for worker bees to enter and exit the hive and will keep the mice out. This is great to implement during your winter preparations and will also assist in good ventilation throughout the winter.

Cat# M311 | \$5.95 | SHP WT - 1 lb



Foundation Device

This device firmly holds frames when nailing in the wedge. Unlike some, our foundation device can be used for both hive and super frames. This comes fully assembled.

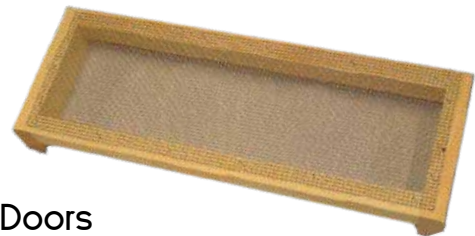
Cat# W618 | \$12.60 | SHP WT - 1 lb



Entrance Reducer

Our entrance reducers have two different size openings. A smaller opening for very weak hives and the larger opening is for winter use.

Cat# W402 | \$1.40 | SHP WT - 9 oz



Screen Doors

Move your bees the safe and easy way. This device keeps your colony well ventilated to prevent overheating while moving them. It can also be placed on a colony upside down to distract robber bees. Do not leave on for more than a week.

Cat# W401 | \$5.75 | SHP WT - 1 lb



Frame Perch

The frame perch hooks over the side of the hive and allows you to hang your frames in the arms as you examine them.

Cat# M535 | \$23.15 | SHP WT - 1 lb

FEEDERS



Deep Feeder

Made from heavy duty long lasting polypropylene. Has textured inner walls to help bees feed without drowning. Fits 9 1/2" hive. Takes up 1 frame width. 120 oz capacity. Feeder can also be fitted with cap and ladders that cover the top except for two openings. The bees can climb into the two open spaces and hang onto the ladders, which go all the way to the bottom of the feeder. This helps reduce drowning.

Cat# M531	\$5.50	Deep Feeder	SHP WT - 2 lbs
Cat# M526	\$2.00	Cap & Ladder	SHP WT - 2 lbs



Pollen Syrup Feeder

Made of white pine with plywood bottom and all seams sealed with a waterproof sealer. Comes with floating platforms with bee entrance in the center running perpendicular to frames. Holds 1 1/4 gallons of syrup on one side. Use with pollen patties, dry pollen or syrup. Fully assembled and ready to use.

Cat# W615	\$23.80	SHP WT - 9 lbs
-----------	---------	----------------



Syrup Feeder

Also known as the Miller Style Feeder. Made of white pine with only one compartment. The bee access is screened in, so the bees can't get out to the beekeeper when the outer cover is removed. The screen is also used by the bees to cling on while feeding. Holds 2 1/2 gallons of syrup.

Cat# W621	\$23.80	SHP WT - 8 lbs
-----------	---------	----------------



Two Sided Feeder

The Two Sided Feeder has a screen down the middle to help prevent your bees from drowning. Designed for the bees to feed through the middle of the feeder.

Cat# W619	\$23.80	SHP WT - 8 lbs
-----------	---------	----------------



Wood/Metal



Plastic

Entrance Feeder

Fits into the entrance of the colony. Perforated metal cap is included with each feeder. Cap fits a standard Mason jar, feed is visible at all times. Refill the jar without opening the hive.

Cat# M320	Plastic Feeder	\$4.10	SHP WT - 1 lb
Cat# M532	Wood/Metal Feeder	\$4.75	SHP WT - 2 lbs
Cat# M529	Extra Caps	\$0.85	SHP WT - 8 oz



Bee Bar Entrance Feeder Cap

The Bee Bar Cap is designed for jar feeders and works with sugar syrup, supplements and medications. Easily fits onto our wood and metal or plastic entrance feeder and is compatible with mason jars and regular mouth jars. Unlike metal caps, this plastic cap is not prone to rust. Color is attractive to bees. Dishwasher safe, food safe, BPA free, and UV stable.

Cat# M530	\$4.95	SHP WT - 8 oz
-----------	--------	---------------

5 Frame NUC's

These NUC's are made from **Commercial Grade Lumber**. The top is the same quality as the 10 Frame Telescoping Top. The bottom boards are tongue and groove. NUC's are great for keeping a spare queen and her brood in case of loss in your standard hive or for hiving a small swarm.



Complete NUC

NUC 9 1/2" x 9 1/4" Body
Inner Cover
Telescoping Top
Bottom Board



Cat# W129 | \$49.15 | SHP WT - 15 lbs

Cat# W124	9 1/2" NUC Body	\$14.10	SHP WT - 6 lbs
Cat# W126	6 5/8" NUC Medium Super	\$8.95	SHP WT - 5 lbs
Cat# W125	5 11/16" NUC Shallow Super	\$8.80	SHP WT - 2 lbs
Cat# W515	NUC Inner Cover	\$9.65	SHP WT - 2 lbs
Cat# W516	NUC Top	\$13.80	SHP WT - 3 lbs
Cat# W517	NUC Bottom Board - Unassembled	\$11.60	SHP WT - 5 lbs
W518	NUC Screen Bottom Board	\$11.55	SHP WT - 5 lbs
W519	5 Frame NUC IPM Board	\$16.95	SHP WT - 5 lbs
M326	5 Frame NUC Sticky Board	\$4.40	SHP WT - 5 lbs
M326 5+	5 Frame NUC Sticky Board	\$4.15	SHP WT - 5 lbs



NUC Feeder

Same great design as our regular sized Syrup Feeder. Holds approximately 1 1/4 gallons of syrup. Ships assembled.

SHP WT - 6 lbs

Cat# W525 | \$19.80

Wax Cardboard NUC

Heavily waxed cardboard NUC is made of superior quality. Includes a screen that closes off the entrance. Great for transporting and making splits. Ships unassembled.

SHP WT - 6 lbs

Cat# W130	\$8.55	SHP WT - 6 lb
Cat# W130 10+	\$7.80	SHP WT - 6 lb
Cat# W130 100+	\$7.20	SHP WT - 6 lb

Not eligible for free shipping.



Only the finest 100% Pure U.S. Beeswax is used in the production of these foundations. After all, quality foundation is the base for a very productive hive.



Crimped Wire Foundation

- The steel hooks fit behind the wedge in the Top Bar
- There are 9 vertical crimped steel wires that radiate strength.
- These cells are perfectly milled with deep cell walls.
- When using this foundation in deep frames it is recommended to add additional cross wires for added support.



Medium Brood

- This is a 100% Pure Beeswax foundation.
- These foundation sheets have deep walled, worker-sized cells.
- Cross wiring is recommended when using medium brood foundation for additional support.
- Excellent foundation for a great price!



Cut Comb



Thin Surplus

Cut Comb and Thin Surplus

- This is the finest comb honey foundation made of
- 100% Pure Beeswax.
- Cut Comb foundation is slightly heavier than Thin Surplus for easier handling.
- Cut Comb foundation is great for chunk honey or comb honey that is cut from the frame.
- Thin Surplus should be used for square and round section comb honey.
- Thin Surplus is the thinnest beeswax sheet for the finest comb honey.





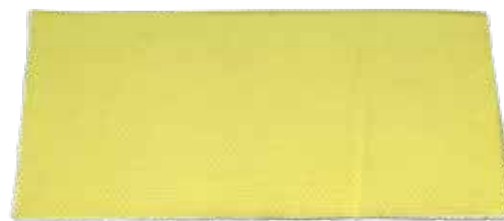
Crimped Wire Foundation

100% pure beeswax foundation is reinforced with steel wires, which have been crimped to strengthen the perfectly milled foundation. The top of the wires form hooks secured by the foundation wedge.

Cat# F515	8 1/2" x 16 3/4"	\$16.07	SHP WT - 3 lbs	10 Sheets per Carton
Cat# F516	8 1/2" x 16 3/4"	\$67.30	SHP WT - 8 lbs	50 Sheets per Carton
Cat# F517	8 1/2" x 16 3/4" (12.5 lbs/carton)	\$119.83	SHP WT - 14 lbs	Approx. 87 Sheets per Carton
Cat# F518	8 1/2" x 16 3/4" (25 lbs/carton)	\$239.65	SHP WT - 31 lbs	Approx. 175 Sheets per Carton

Cat# F520	5 5/8" x 16 3/4"	\$10.60	SHP WT - 3 lbs	10 Sheets per Carton
Cat# F521	5 5/8" x 16 3/4"	\$51.51	SHP WT - 8 lbs	50 Sheets per Carton
Cat# F522	5 5/8" x 16 3/4" (12.5 lbs/carton)	\$119.83	SHP WT - 14 lbs	Approx. 137 Sheets per Carton
Cat# F523	5 5/8" x 16 3/4" (25 lbs/carton)	\$239.65	SHP WT - 31 lbs	Approx. 275 Sheets per Carton

Cat# F525	4 3/4" x 16 3/4"	\$10.60	SHP WT - 2 lbs	10 Sheets per Carton
Cat# F526	4 3/4" x 16 3/4"	\$51.51	SHP WT - 6 lbs	50 Sheets per Carton
Cat# F527	4 3/4" x 16 3/4" (12.5 lbs/carton)	\$119.83	SHP WT - 14 lbs	Approx. 150 Sheets per Carton
Cat# F528	4 3/4" x 16 3/4" (25 lbs/carton)	\$239.65	SHP WT - 32 lbs	Approx. 300 Sheets per Carton



Medium Brood Foundation

100% pure beeswax foundation is precisely milled to the imprint on the honeycomb. This foundation is not reinforced and we recommend embedding (4) horizontal cross-wires.

Cat# F560	8 1/2" x 16 3/4"	\$16.00	SHP WT - 2 lbs	10 Sheets per Carton
Cat# F561	8 1/2" x 16 3/4"	\$61.15	SHP WT - 8 lbs	50 Sheets per Carton

Foundation will be shipped at buyer's risk during cold weather, 38°F or below.

Cut Comb Foundation

100 % pure beeswax, washed, cleaned, and filtered precision milled into cut comb foundation, slightly thicker than thin surplus foundation.



Cat# F535	5 5/8" x 16 1/2"	\$8.40	SHP WT - 2 lbs	10 Sheets per Carton
Cat# F536	5 5/8" x 16 1/2" (5 lbs/carton)	\$56.10	SHP WT - 8 lbs	80 Sheets per Carton

Cat# F540	4 3/4" x 16 1/2"	\$8.40	SHP WT - 2 lbs	10 Sheets per Carton
Cat# F541	4 3/4" x 16 1/2" (5 lbs/carton)	\$56.10	SHP WT - 8 lbs	90 Sheets per Carton
Cat# F542	4 3/4" x 16 1/2" (12.5 lbs/carton)	\$122.38	SHP WT - 15 lbs	225 Sheets per Carton
Cat# F543	4 3/4" x 16 1/2" (25 lbs/carton)	\$244.75	SHP WT - 33 lbs	450 Sheets per Carton

Thin Surplus Foundation

Excellent for comb honey production! Precision milled for sparkling comb honey. Only the finest virgin beeswax is used in the production of this foundation.



Cat# F530	4 3/4" x 16 1/2" (1 lb/carton)	\$12.24	SHP WT - 2 lbs	22 Sheets per Carton
Cat# F531	4 3/4" x 16 1/2" (5 lbs/carton)	\$56.10	SHP WT - 8 lbs	110 Sheets per Carton
Cat# F532	4 3/4" x 16 1/2" (12.5 lbs/carton)	\$122.38	SHP WT - 15 lbs	275 Sheets per Carton
Cat# F533	4 3/4" x 16 1/2" (25 lbs/carton)	\$244.75	SHP WT - 33 lbs	550 Sheets per Carton



Foundation will be shipped at buyer's risk during cold weather, 38°F or below.

150 YEARS - & LAND GRANT COLLEGES
Catch The Buzz™
Bee Culture
The Magazine Of American Beekeeping
www.BeeCulture.com
Insect Pollination - Worth \$29 Billion
Visit The USDA Honey Bee Labs
Assembling Wooden Frames
2012 Year-End Index
\$4.99

Bee Culture

The Magazine Of American Beekeeping

- The Best Selling Beekeeping Magazine in the States
- The ONLY Magazine on Thousands of Newsstands Across the U.S.
- The ONLY Magazine for City Bees & City Beekeepers
- Kids' Pages & Science Pages
- The Best Writers in the Industry Writing For Beekeepers Just Like You

To Subscribe Today Call
Miller Bee Supply - 888.848.5184
 #475 1 year - \$25; #476 2 years - \$48;
 #477 3 years - \$69
 (Add \$15 for Foreign Shipping & Handling)

Save Over 60% Off The
 Regular Newsstand Price
 With Miller Bee Supply's
 Subscription Offer!

Order Form



496 Yellow Banks Road, North Wilkesboro, NC 28659
 Order Toll Free: 888-848-5184 • Office: 336-670-2249

info@millerbeesupply.com
 www.millerbeesupply.com

Billing Address
 Company Name _____
 Name _____
 Address _____
 City _____ State _____
 Day Phone # _____ Zip _____
 Email Address _____

Shipping Address (If Different)
 Company Name _____
 Name _____
 Address _____
 City _____ State _____
 Day Phone # _____ Zip _____
 Email Address _____

Payment Method
 Check Money Order

Security Code _____
 from back of card

Note: If out of an item ordered, how should we proceed?
 (Additional shipping will be charged on back orders)

Cancel Item Back Order (Item) Hold Entire Order

Preferred Shipping Method
 Best Way United Parcel (UPS) Priority

Expiration Date MM / YY _____ Credit Card # _____

Qty	Cat #	Description	Size	Price Ea.	Total Price	Shp Wt

Additional Order Space is available on the next page.

Total Weight lbs/oz	
Total Amount for Order	
NC Residents ONLY 7% Sales Tax	
(see page 38) Shipping & Handling	
Total Amount Enclosed	

THANK YOU FOR YOUR ORDER

THANK YOU FOR YOUR ORDER



Guarantee: Inspect your order immediately or within the first thirty days. If upon receipt of your order, you are not satisfied with the quality or the workmanship of our equipment please call customer service for a refund or exchange.

Prices: We try not to change our prices in the middle of the year.

Sometimes due to circumstances beyond our control we may have to change prices on a product. We are not responsible for typographical errors in catalog or website.

Returns & Damages: It is your responsibility to inspect the package when it arrives. If you have a damaged item call customer service as soon as possible. Do not throw away or destroy packaging.

- Call Customer Service for return authorization.
- Merchandise must be returned within 30 days of invoice date.
- Merchandise must be unused and in good condition.
- Shipping costs are non-refundable. (Unless we made an error on original order.)
- We cannot accept returns on hazardous materials.

Back Orders: Back orders are shipped and billed separately from your original order. Customers will be responsible for the additional shipping charges on all back orders.

Free Shipping: Free shipping applies to most orders over \$150 that can be sent UPS ground or USPS in the lower 48 states. (Expedited shipping does not apply.) Some items marked “Does not qualify for free shipping” or custom-made items, will not ship for free. If you combine free shipment eligible items and non-qualifying items, we base the shipment amount on the weight of just the non-qualifying items. Items excluded from the offer are subject to change without notice. We will not free ship backordered items. If you order something that is out of stock, we will call you and can take the item off or hold the whole order until the item is back in stock.

Terms: We accept Master Card, Visa, American Express and Discover. Money Order or Check must accompany mail in order. A \$30 fee will be charged for any returned check. We reserve the right to impose any state or local taxes imposed on us. We also reserve the right to limit quantities sold to anyone. Rush orders during busy season \$15.00.

Shipping: UPS calculates shipping by fuel surcharges, dimensions, and rural service fees. We must adjust our fees by UPS updates. The chart in the catalog is for shipping estimates only. Please make sure we are given your correct address when ordering. An \$11.00 address correction fee by UPS will be added to your bill. We do offer UPS next day, 2nd day, and 3 day services at additional charges. We also use the US Postal Service for smaller orders. We try to find the best rate for our customers.

Refunds: All refunds will be made promptly. If the return is under \$5.00, it will be applied as credit to your account. If you prefer not to have it applied to your account, state so on order form. If return is over \$5.00 we will issue a check immediately.

Additional Charges: Returned check fee \$30.00. Rush orders during busy season \$15.00.

Please be sure to note size of product you are ordering.

If you have any questions about an order, feel free to call us for any assistance we may be able to provide.

QTY	CAT #	DESCRIPTION	SIZE	PRICE EA.	TOTAL PRICE	SHP WT

Protective Clothing

Call or check website for size availability.



Apollo Suit

Made of sturdy 100% cotton. Has a front vertical zipper, 2 zipper collapsible veil and boot zippers with a snap. Padding at the knees and the waist has elastic in back. The suit has 2 rear and 4 front pockets. *Available in Children Sizes.*
SHP WT - 5 lbs

Cat# M514 S-XL	\$109.00
Cat# M514 XXL-5XL	\$114.00
Cat# M512 S-XL	\$69.95

Apollo Jacket

Made of sturdy 100% cotton. Jacket has a front zipper with 2 zipper collapsible veil and 2 front pockets. Elastic waist with snap. *Made in Argentina.*
Available in Small - 5X



Cat# M515 S-XL	\$71.00	SHP WT - 3 lbs
Cat# M515 XXL-5XL	\$74.00	SHP WT - 3 lbs

Ventilated Suits

100% cotton body full suit. The suit features 5 vents in the front, back and arms. Two large front pockets to hold tools, elastic at the ankles. Velcro and snap closures cover zippers for your protection. Available with either a dome hood, or a round veil. The round veil requires a helmet, but one is included with the suit! (Our ventilated helmet, item M342.)



Cat# M513 S-XL	Dome Veil	\$119.00	SHP WT - 6 lbs
Cat# M513 XXL-5XL	Dome Veil	\$124.00	SHP WT - 6 lbs
Cat# M507 S-XL	Round Veil	\$125.00	SHP WT - 6 lbs
Cat# M507 XXL-5XL	Round Veil	\$129.00	SHP WT - 6 lbs

Ventilated Jackets

100% cotton jacket. The jacket features 5 vents in the front, back and arms. Two large front pockets to hold tools, elastic at the ankles. Velcro and snap closures cover zippers for your protection. Available with either a dome hood, or a round veil. The round veil requires a helmet, but one is included with the suit! (Our ventilated helmet, item M342.)



Cat# M508 S-XL	Dome Veil	\$119.00	SHP WT - 3 lbs
Cat# M508 XXL-5XL	Dome Veil	\$124.00	SHP WT - 3 lbs
Cat# M509 S-XL	Round Veil	\$125.00	SHP WT - 3 lbs
Cat# M509 XXL-5XL	Round Veil	\$129.00	SHP WT - 3 lbs

Size Chart For Our Bee Suits

SIZE	CHEST	SIZE	CHEST	SIZE	CHEST
S	34" - 36"	L	42" - 44"	XXXL	54" - 56"
M	38" - 40"	XL	46" - 48"	XXXXL	58" - 60"
		XXL	50" - 52"	XXXXXL	62" - 64"



Nylon Zippered Veil Suit

These coveralls feature raglan sleeves, two way zipper, velcro at wrist and ankle and six roomy pockets. Plus there is a tool pocket and zipper in lower legs for ease in taking on and off. They are made of lightweight 100% nylon.
Gloves not included.

Cat# M357	Nylon Suit - M	\$99.40	SHP WT - 4 lbs
Cat# M358	Nylon Suit - L	\$99.40	SHP WT - 4 lbs
Cat# M359	Nylon Suit - XL	\$99.40	SHP WT - 4 lbs



Cotton Coveralls

Coveralls are of 50/50 cotton/polyester blend. Elastic waist in back as well as elastic wrist opening with thumb holes and elastic legs.
Available in Small - XXL

Cat# M360	\$53.95	SHP WT - 4 lbs
-----------	---------	----------------

HELMETS & VEILS



Ventilated Helmet

Woven open mesh material is strong and light-weight for maximum circulation of air. Adjustable headband.

This Helmet is available in white or tan.

Cat# M342 | \$16.95 | SHP WT - 2 lbs



Hat and Pull Down Veil Combo

This unique hat features a pull down veil, simply pull the veil over the brim of hat for easy access. No more unzipping multiple zippers just to get a drink of water, to brush the sweat out of your eyes or to use the cell phone. This hat veil combo works well for quick trips to the bee yard.

Cat# M353 | \$19.95 | SHP WT - 2 lbs



Square Veil

Made from 4 pieces of No. 10 mesh, steel wire and can be folded and stored easily. The top skirt is nylon with an elastic band to hold it tightly on the helmet. Elastic strap around the collar keeps bottom tight to your clothing. **Does not include helmet.**

Cat# M351 Wire Screen | \$14.70 | SHP WT - 1 lb

Cat# M355 Nylon Screen | \$14.70 | SHP WT - 1 lb



Apollo Round Veil Replacement Veil

Replacement round veil for Apollo jackets and suits. **Does NOT include helmet.**

Cat# M506 | \$23.95 | SHP WT - 1 lb



Alexander Veil

Has a durable white cloth that forms the hat. No helmet needed! Inner elastic headband holds veil in position so tip does not touch the head. Cloth top extends down the back of veil to form shade for neck. This veil can be worn with a baseball cap.

Cat# M503 | \$18.90 | SHP WT - 2 lbs



Replacement Veil for Apollo Suit

Replacement veil with zipper for Apollo Half and Full suits.

Cat# M516 | \$23.95 | SHP WT - 1 lb



Round Veil

Made from 10 mesh steel wire. Slightly smaller than the square veil. Full view style fits snugly on a helmet. Veil has no seams to inhibit vision. **Helmet not included.**

Cat# M352 | \$14.70 | SHP WT - 1 lb



Round Nylon Veil with String

This is a good choice of veil if you are seeking comfort. White elastic top skirt with yellow drawstring bottom skirt. Mesh in field of view is made of black nylon. **Helmet not included.**

Cat# M350 | \$14.70 | SHP WT - 1 lb

Gloves



Leather Gloves

The hand of this glove is made of top grain cowhide leather. Rubberized gauntlet bell cuff with 100% nylon, full circular ventilation panel is firmly stitched between glove and sleeve for extra coolness on hot days. Elbow length canvas sleeves with elastic closure at top to keep bees from entering sleeve. Please state size when ordering: L-XL

Cat# M343 | \$24.95 | SHP WT - 1 lb



Goat Skin Gloves

Premium Grain Genuine Goat Skin glove with double stitched seams. Mesh ventilation around the wrist for added coolness and a canvas sleeve. 18" length. Please state size when ordering: XS-3XL. Also available in X-small for children.

Cat# M349 | \$14.95 | SHP WT - 1 lb



Canvas Gloves

These heavy canvas gloves are specially treated making them less susceptible to stings. Sleeve has an elastic top that wears just above the elbow. Please state size when ordering: S-L

Cat# M344 | \$11.59 | SHP WT - 1 lb



Economy Cowhide Leather Gloves

This great buy features a soft cowhide leather lower and a sturdy canvas upper. Please state size when ordering: XS-XL.

Cat# M346 | \$12.95 | SHP WT - 1 lb



Sweat Band

Sponge-like material absorbs moisture and cools the wearer. The Sweat Band is easily washed.

Cat# M262 | \$1.45 | SHP WT - 2 oz



Velcro Boot Straps

These straps are designed to go around your pant legs to keep them secured and bees out.

Cat# M517 | \$3.95 | SHP WT - 2 oz



Hive Carrier

Designed so that two people can easily carry a heavy hive with supers. The tabs on the carrier slip into hand holds of the hive.

Cat# M536 | \$56.75 | SHP WT - 10 lbs



Frame Wire

#28 hard drawn tinned steel wire with almost no stretch. The best foundation wire your money can buy. 1 lb spool is sufficient for approximately 200 frames.

Cat# M538 | \$9.45 | SHP WT - 2 lbs



Frame Eyelets

Small eyelets are fitted into frame end bars, preventing wire from cutting into the wood. One pound has approximately 1000 units.

Cat# M563 | \$7.95 | SHP WT - 2 lbs

Support Pins

Small metal pins similar in appearance to clothes pins. Simply press pins through holes in end bars of frames so foundation is held in pin slot. Pack of 100



Cat# M327 | \$8.25 | SHP WT - 7 oz

Spur Wire Embedder

This handy tool is used for embedding the tinned wire into the foundation. This too can be heated to help melt a bit of wax around the wire. Well worth the price if you're installing your own wire. Buy two, keep one heated while using the other.



Cat# M539 | \$10.25 | SHP WT - 6 oz

Blue Frame Gripper



This frame gripper is a multi tool with hook to lift ears of frames, blade to separate frames and gripper plates allow for easy lifting. Can be used with any frame wood or plastic. Made in the USA

Cat# M305 | \$9.85 | SHP WT - 2 lbs

Stainless Steel Frame Grip



Grips Top Bar of frame for one-handed loosening and removal of even the most stubborn frames. Heavy duty.

Cat# M315 | \$10.95 | SHP WT - 2 lbs

Eyelet Punch



This eyelet punch makes insertion of small eyelets simple and easy. The eyelet prevents wire from cutting into the wood of the wiring holes in end bars of brood and super frames.

Cat# M564 | \$3.85 | SHP WT - 6 oz

Frame Cleaner



This tool quickly removes wax from grooves in any style frame. Especially effective on the grooved style bottom bars.

Cat# M223 | \$6.95 | SHP WT - 6 oz

Wire Crimpers



Wire your frame loosely and run this crimper over the wires. The crimping takes up the slack and makes the wire tight and much easier to embed into the foundation. Helps give wax foundation the extra support it needs.

Cat# M534 | \$8.75 | SHP WT - 1 lb

Queen Catcher

This queen catcher allows the beekeeper to safely catch the queen without using their hands. You can catch the queen bee from the comb using this nifty 2" x 2" device that also allows the workers to escape while keeping the queen safe inside.

Cat# Q104 | \$6.29 | SHP WT - 8 oz



Queen Marking Cage

Place the cage over the Queen as she walks around the frame. Gently press it into the comb until you are able to get a bit of paint on her.

Cat# Q105 | \$1.95 | SHP WT - 1 lb



Queen Grafting Tools

Used to transfer baby larvae from frames to artificial queen cell cups.

Cat# Q102	Plastic	\$4.95	SHP WT - 2 oz
Cat# Q103	Stainless Steel	\$15.95	SHP WT - 2 oz



Queen Marking Pen

Quick and easy way to mark your queen for visibility. White-years ending in 1 or 6. Yellow - 2 or 7. Red - 3 or 8. Green - 4 or 9. Blue - 0 or 5.

Cat# Q100 | \$7.50 | SHP WT - 2 oz



Queen Marking Tube

This queen marking tube will help you mark your queens. Trap the queen in the tube and use the cushioned plunger to get her in place to mark.

Cat# Q101 | \$6.50 | SHP WT - 2 oz



Swarm Trap

The easy way to capture swarms and you don't even have to be in the bee yard! Made of a molded fiber material which is water resistant. Its rough texture simulates the inside of a hollow tree. When used in conjunction with swarm lures, swarm traps are extremely effective in attracting and capturing swarms.

Cat# M522 | \$23.95 | SHP WT - 6 lbs



Swarm Commander Super Lure

The Swarm Commander Super Lure is the easiest and newest swarm lure in the market. Simply hang in your empty hive or swarm trap and you are baited for a minimum of 90 days.

Cat# C502 | \$12.95 | SHP WT - .5 lb



Swarm Commander Vials 5 pk

Swarm Commander Vials are plastic vials that won't degrade over time. They contain .5 ml. of Swarm Commander Premium Swarm Lure product. No need to place these in the freezer or refrigerator. Shelf life is 2 years. Store in temperature controlled environment.

Cat# C503 | \$9.99 | SHP WT - .5 lb



Swarm Commander Spray 1 oz.

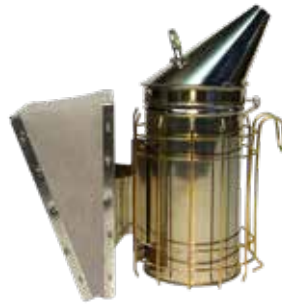
Swarm Commander Premium Swarm Lure will give you the edge when you are baiting your traps to capture feral swarms. Use one or two sprays to bait your trap.

Cat# C506 | \$22.95 | SHP WT - .5 lb



Stainless Steel Smoker

We offer a stainless steel smoker. Shielded models use a wire formed shield with hanging hook and bottom rest wires for maximum versatility and protection for the operator and immediate surroundings. The bellows are made of only the highest quality materials. A special binding gives a good grip with no raw edges exposed. Special valve construction allows bellows to refill quickly.



Cat# M927	4x7 SS Smoker w/Shield	\$29.80	SHP WT - 3 lbs
Cat# M928	4x10 SS Smoker w/Shield	\$29.80	SHP WT - 4 lbs

Smoker Fuel

Our smoker fuel burns clean and cool. And it will not go out while sitting for long periods. It lights with a touch of a match. Made with clean, raw, short cotton fibers and cottonseed husks that are compressed under extreme pressure. One 3" plug will last several hours.



Cat# M935	Smoker Fuel - 1 lb	\$3.95	SHP WT - 2 lbs
Cat# M936	Smoker Fuel - 5 lbs	\$15.95	SHP WT - 6 lbs

Cotton Cut-Offs Smoker Fuel

Light your smoker quickly and easily with our 100% cotton smoker fuel. 2 lb bags

Cat# M925	\$4.50	SHP WT - 2 lbs
-----------	--------	----------------



Bee Brush

Plastic bristles are easily washed and are soft enough that bees are not harmed when brushed from frames.



Cat# M319	\$4.65	SHP WT - 8 oz
-----------	--------	---------------

Lil Smokey

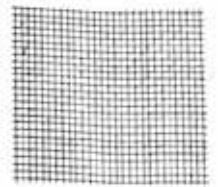
This is a fully functional mini smoker and are the perfect size for your little beekeepers.



Cat# M926	\$18.85	SHP WT - 1 lb.
-----------	---------	----------------

Galvanized Hardware Cloth

Used for Screen wire on Screen Bottom Boards. 8-Mesh (8 squares per inch & 36" wide). Rolls ship in separate boxes. Not available for free shipping.



Cat# M328	Hardware Cloth - 1 Linear Foot	\$2.70	SHP WT - 1 lb
Cat# M329	Hardware Cloth - 100 Foot Roll	\$215.00	SHP WT - 50 lbs

Yellow Hive Tool

An economical hive tool. Yellow painted steel with nail pulling slot, 10". Bent edge works well for scraping.



Cat# M313	\$4.95	SHP WT - 8 oz
-----------	--------	---------------

Hive Tool

9 1/2" long. Has a tapered flat end for prying and removing frames and one curved end for scraping.



Cat# M314	\$5.95	SHP WT - 8 oz
-----------	--------	---------------

Frame Lifter/Scraper

Scraper and frame lifter, all in one hive tool!



Cat# M316	\$12.75	SHP WT - 1 lb
-----------	---------	---------------

Honey Removal

A hive needs about 60 pounds of honey to get through the winter. Any less and they'll starve. For hives that are being kept by humans, they usually produce about 120 pounds of honey during the summer so we get half the fruits of their labors.

Bee Escape Board

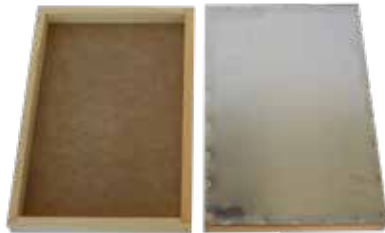
Place in between super and hive body. Allows bees to exit super and enter hive but won't let them back into the super. Easy way to empty super of bees prior to opening it up to remove frames.



Cat# W400	10 Frame Bee Escape	\$14.40	SHP WT - 9 lbs
Cat# W8400	8 Frame Bee Escape	\$14.40	SHP WT - 8 lbs

Fume Board

Well constructed with 1 1/2" deep sides. Heavy flannel covered canvas absorbs liquid chemicals quickly. Just sprinkle on pad and place on top of supers. Fully assembled.



Cat# W326	10 Frame Fume Board	\$14.75	SHP WT - 3 lbs
Cat# W8326	8 Frame Fume Board	\$14.75	SHP WT - 2 lbs

Honey B Gone 8 oz.

Honey-B-Gone is made of natural oils that bees just don't like. When you spray Honey-B-Gone on a fume board or apply it to an area you are doing a bee removal from, the honey bees flee! To us though, it has a pleasant smell much like almonds or cherries. Honey B Gone smells great and works quickly to make removal of honeybees from your honey supers easy and quick.



Cat# C501 | \$15.95 | SHP WT - 1.5 lbs



Honey Robber

Quickly chases bees from the honey super on cold or hot days. Simply squirt onto a fume board and leave to drive bees from the super. This product has a very bad smell but does not affect the smell or taste of the honey. We do recommend letting your honey air overnight before extracting.

Cat# C500 | \$16.95 | SHP WT - 2 lbs

Bee Escape

Fits in hole of the inner cover. Inner cover is then placed under super of honey to be removed. Supers are usually free of bees within 2 days.



Cat# M325 | \$3.15 | SHP WT - 2 oz

CombCapper

The CombCapper is proudly made in the USA and can help to remove the honeycomb cappings from bee frames. This stable, dishwasher safe capping unit accommodates shallow, medium, and deep frames, and will fit any standard 5 gallon bucket.



Cat# M551 | \$34.95 | SHP WT - 2 lbs

Bee Smart Slicer

A new kind of uncapping slicer, made of high quality plastic with no sharp points. It features a depth gauge, for regular or deep slicing, a comfortable handle, and a frame wedge. It is wide enough to cover a medium frame in three passes, and best of all is dishwasher safe!



Cat# M321 | \$8.50 | SHP WT - 1 lb

Capping Scratcher

When extracting honey the capping scratcher breaks open caps on honey comb to be processed. This tool is especially useful in corners that an electric knife is unable to reach.



Cat# M304 | \$6.95 | SHP WT - 8 oz

Uncapping Tank

An uncapping tank is invaluable to have when processing your frames of honey prior to placing them in the extractor. Simply uncap your frames of honey using an electric knife, or capping scratcher over top of the tank and drippings will collect nicely in the tank. It separates the wax cappings from the honey as well.



Cat# M550 | \$135.95 | SHP WT - 16 lbs

Honey Removal & Bottling

Plastic Pail with Lid

Heavy gauge, food grade plastic with tight sealing lid and pail. 5 gallon size.



Cat# M546 | \$8.95 | SHP WT - 4 lbs

Bottling Bucket

Same as Plastic Pail but with our 1 1/2" Plastic Honey Gate already installed.



Cat# M547 | \$27.95 | SHP WT - 5 lbs

Plastic Lid Remover

No more sore finger tips! Excellent tool for removing lids from plastic buckets without cutting or distorting container.



Cat# M800LR | \$7.25 | SHP WT - 1 lb

Pail Perch

For transferring honey from one container to another. Simply slip onto receiving container and place container you're pouring from upside down and drain.



Cat# M548 | \$21.95 | SHP WT - 5 lbs

Plastic Honey Gate

1 1/2" plastic gate with two "O" rings to prevent leakage. Nice and heavy duty.



Cat# M545 | \$11.75 | SHP WT - 1 lb

Gamma Lid

Fits all Standard 3.5 gal, 5 gal and 6 Gallon Pails. The Gamma Seal Lid converts a plastic bucket into a unique reusable plastic container. These heavy duty bucket lids are made of high density polyethylene (HDPE) Food Grade Plastic material.



Cat# M552 | \$10.50 | SHP WT - 1.5 lbs

Uncapping Roller Punch

Uncapping Roller Punch is constructed of stainless steel and food grade plastic. This 4" uncapping punch will speed up your operation by making it possible to uncup faster. Simply run the roller up and down the side of each frame and the spikes pierce the sealed cells, releasing the honey, ready for the extractor. As most of the wax is kept on the frame, you have less wax cappings to deal with.



Cat# M554 | \$23.95 | SHP WT - 3 lbs

Bucket Bench

Introducing Bucket Bench, another great invention from the maker of CombCapper. This is a hands-free solution for time consuming bucket to bucket liquid transfer. A new inexpensive product allowing the user to easily transfer liquids from one bucket into another. Simply attach Bucket Bench to the edge of any 2, 3.5, 5 or 6 gallon bucket then place another bucket using the integrated hooks.



Cat# M553 | \$15.95

Uncapping Plane

Used to remove the wax caps from honey prior to further processing. It is electrically heated so it's ready when you are. Please specify either right or left handed model when ordering.



Cat# M382 | \$139.95 | SHP WT - 3 lbs

Honey Refractometer

Hand held, easy to use, heavy duty honey refractometer. Ideal for testing honey, maple syrup and sugar. It only takes a drop of honey to put on the lens. Features built in temperature compensation and comes in a durable hard case you hold it in full sun and easily determine the moisture of your honey. No power source required. Quality construction that lasts for a lifetime of use.



Cat# M556 | \$79.95 | SHP WT - 5 lbs

Speed King Electric Knife

High quality blade is 10" x 2", with a built in thermostat. Manufacturer guarantees this knife for one full year.



Cat# M380 | \$119.95 | SHP WT - 3 lbs

Cold Uncapping Knife

Very sharp knife with offset handle and serrated ridge. This is the knife to use for any beekeeper having 10 or less hives.



Cat# M379 | \$24.95 | SHP WT - 2 lbs

Honey Bottling

Stainless Steel Sieve

Stainless steel double sieve will get the cleanest honey possible. Removable coarse screen with fine outer screen. Fits a 5 gallon pail and other containers with up to a 14" diameter.



Cat# M542 | \$35.95 | SHP WT - 4 lbs

Strainer Bags

Fits nicely inside the rim of a five gallon pail. Made of a washable fine mesh material. It will give you many seasons of service.



Cat# M544 | \$4.35 | SHP WT - 3 oz

Honey Filtering System

5-gallon filtering system filters large, medium and small particles from the honey. Designed to fit into a 5-gallon bucket. Made of durable plastic with a rolled edge around the top. Can be used as a set or individually.



Cat# M540C | 600 Micron Coarse Filter | \$6.95 | SHP WT - 1 lb

Cat# M540M | 400 Micron Medium Filter | \$6.95 | SHP WT - 1 lb

Tamper Proof Seal

This label creates a tamper proof seal by running the tail over the lid. "Pure and natural honey proudly produced by USA honey bees" is printed on the tail and "USA honey" is printed on the octagon. 250 Per Roll



Cat# M431 | \$12.95 | SHP WT - 1 lb

Muth Jars

The Muth Jar is a vintage style glass jar, great for samples and gifts. With an eye-catching square shape, embossed design, and cork closure, this jar is truly unique. Corks included. **Not eligible for free shipping.**



Cat# B540 | Muth 1 lb Jar | 15.95 | 10 lbs

Cat# B541 | Muth 8oz Jar | 11.00 | 8 lbs

Cat# B542 | Muth 4 oz Jar | 30.95 | 13 lbs

Plastic Double Sieve

The perfect honey strainer for the hobbyist beekeeper. Fits over a 5 gallon pail. This product has a coarse inner screen with a fine outer screen.



Cat# M543 | \$27.95 | SHP WT - 3 lbs

Honey Labels

Yellow, black and red on a white background. 250 labels per roll. Measures 2-1/8" x 2-3/8".



Cat# M432 | \$8.70 | SHP WT - 1 lb



Honey Container Lids

Hi-flow spout. Colors available are yellow or red. The spout fits Honey Bear and Classic jar.

Cat# B512 | \$0.14 | SHP WT - 1 oz

Flip top Lid. Colors available are red or yellow. The flip top lids fit Honey Bear or Classic jar.

Cat# B511 | \$0.13 | SHP WT - 1 oz

White Metal Lids

These lids fit the Classic Glass Jars. 48mm fits the 8 oz and 1 lb, 63mm fits the 2 lb jars.

Cat# B514 | 48 MM White Metal Lids | \$0.23 | SHP WT - 2 oz

Cat# B515 | 63 MM White Metal Lids | \$0.29 | SHP WT - 2 oz

Honey Containers & Bottling

Jars not eligible for free shipping.

All weights for honey containers are based on honey weight, not fluid ounces.

Honey Bee Jars

These plastic jars are tall and thin and very clear. Embossed with a honey bee. Great for selling your honey. White plastic lids included. Not dishwasher safe.

Cat# B521	Honey Bee Jar with lids 1 lb - case of 24	\$16.95	SHP WT - 3 lbs
Cat# B531	Honey Bee Jar with lids 2.5 lb - case of 6	\$8.95	SHP WT - 4 lbs



Classic Glass Jars

That classic jar you love in glass. Comes with white, metal lids. Features a smooth, flat front to show off your labels.

Cat# B571	Classic Glass 8 oz case of 24 with lids	17.65	8 lbs
Cat# B572	Classic Glass 1 lb case of 24 with lids	18.95	13 lbs
Cat# B573	Classic Glass 2 lb case of 12 with lids	14.95	9 lbs



Honey Bears

These little bears are excellent for gift packaging or selling. Clear plastic containers for serving your honey at the table. Available in 2, 8 and 12 oz.

Cat# B505	Honey Bears 2oz - 10 Bears with lids	\$6.50	SHP WT - 1 lb
Cat# B506	Honey Bears 2oz - case of 160 with lids	\$75.00	SHP WT - 1 lb
Cat# B507	Honey Bears 8oz - 10 Bears with lids	\$6.45	SHP WT - 1 lb
Cat# B508	Honey Bears 8oz - case of 285 without lids	\$99.00	SHP WT - 30 lbs
Cat# B509	Honey Bears 12 oz - 10 Bears with lids	\$8.95	SHP WT - 1 lb
Cat# B510	Honey Bears 12 oz - case of 250 without lids	\$90.00	SHP WT - 30 lbs



Classic Honey Jars

These jars are clear, squeezable plastic with a Flip Top Lid. Please specify red or yellow lids.

Cat# B553	Classic Jars 8 oz case of 12 with lids	6.50	3 lbs
Cat# B553C	Classic Jars 8 oz case of 100 without lids	36.50	30 lbs
Cat# B551	Classic Jars 1 LB. case of 12 with lids	6.80	3 lbs
Cat# B551C	Classic Jars 1 lb. case of 321 without lids	130.95	30 lbs
Cat# B552	Classic Jars 2 LB. case of 12 with lids	9.75	4 lbs
Cat# B552C	Classic Honey Jars 2 lb. case of 120 without lids	79.95	30 lbs



Hourglass

These Hourglass plastic honey containers have a lovely embossed comb pattern around the top. The hourglass figure allows you to easily hold and squeeze. Because this squeezable container is flat on both sides you are able to use a variety of label sizes. Both sizes come 12 to a case. Specify red or yellow "flip top" lids.

Cat# B561	1 lb Hourglass with lids	6.95	2 lbs
Cat# B561:B561C	1 lb Hourglass case of 290 without lids	105.00	20 lbs
Cat# B562	2 lb Hourglass with lids	13.50	2 lbs
Cat# B562:B562C	2 lb Hourglass case of 170 without lids	84.95	25 lbs



Extractors

For Your Information - A radial extractor is loaded with the frames pointing to the center post. When a radial is turned, both sides of the frame are extracted at the same time. With a basket style extractor you must load the frames so they all track in the same direction and you must crank the extractor so that the bottom bars lead the top bars. With this extractor it is important to load the extractor, spin out 1/2 of one side of each frame, then pull the frames out and turn them around. This time spin the frames until this second side is empty. Then turn them once again to their original position and finish spinning the 1/2 of the first side that you started with. If you follow these instructions you will break less comb, and extract more honey from the frames. Always remember with any extractor, the honey gate **MUST ALWAYS** be open and a container under it to catch the running honey while operating extractor.

18 Frame Radial with Italian Motor

Extractor is made from high polished Food Grade 18/10 Stainless Steel. This extractor is 24" tall x 26" in diameter. Legs are included. Extracts 2 supers of honey at one time, 18 medium or shallow frames or 9 deep frames. Great if you have 25 colonies or more. This unit operates at variable speed from 0-450 RPMs. Includes a 110 volt German Reversible Motor. Comes with a two year warranty.

Cat# M630 | \$1,400.00



9 Frame Radial with Italian Motor

Extractor is made of high polish Food Grade 18/10 Stainless Steel. This extractor is 24" tall x 21" in diameter. Legs are included. It will radially extract 9 medium or shallow frames or 3 deep frames tangentially. Includes cages, top cover, hinges, legs and a honey gate great for 5 to 25 colonies. The 110 volt motor has a variable speed of 0-450 RPMs.

Cat# M620 | \$1,095.00



Deluxe 9 Frame Radial Hand Extractor

Extractor is made of high polished Food Grade 18/10 Stainless Steel and will make extracting a breeze. Holds 9 medium or shallow frames or 3 deep frames tangentially with the cages that are included. Perfect for 5 to 25 colonies. Hinged Plexiglas covers and has a lockout hand crank. Steel helical gear drive box makes cranking easy and is very heavy duty. It has metal gears. Tank measures 21" deep x 24" high.

Cat# M610 | \$635.00



4 Frame Compact Extractor

For the money this is the perfect extractor. If you have just a few hives and want the convenience and ease of extraction this is perfect for you! Extracts all frames tangentially. High polished Food Grade 18/10 Stainless Steel with 3:1 ration metal gears and side handle for easy cranking. Basket holds 4 medium or shallow frames or 2 deep frames. It has metal gears. Tank measures 16" x 23" high honey gate and stand is included.

SHP WT - 65 lbs

Cat# M600 | \$375.00



Honey Storage Tank

Our honey tank is made of 22 gauge 18/10 food grade stainless steel with welded construction. A removable stainless steel filter insert will turn tank into a perfect bottling tank. The tank is 25" tall with a diameter of 12" and comes with a stainless steel lid and plastic honey gate. Tank will hold 132 lbs of Honey.

Cat# M599 | \$235.00 | *SHP WT - 8 oz*



Food Grease

USDA, Food Approved Lubricant. This grease can be used on any extractor.

Cat# M541 | \$5.75 | *SHP WT - 8 oz*





Honey-B Healthy

Used as a feeding stimulant (in sugar syrup) for late winter, early spring and during dearth of nectar. Calms bees. Contains essential oils, such as lemongrass and spearmint. 16 oz bottle makes up to 24 gallons of feeding solution.

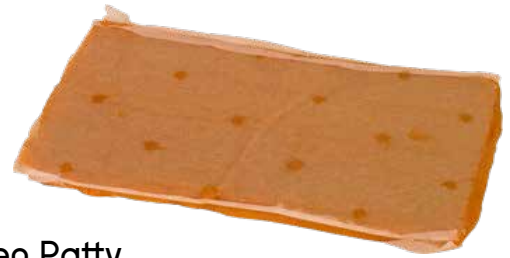
Cat# C604	16 oz	\$25.99	SHP WT - 3 lbs
Cat# C603	1 gallon	\$139.95	SHP WT - 3 lbs



Nozevit Plus

Nozevit plus promotes the intestinal health of your honey bees. An all natural feed supplement. A 50ml bottle will feed fifty hives one time when mixed into four gallons of syrup.

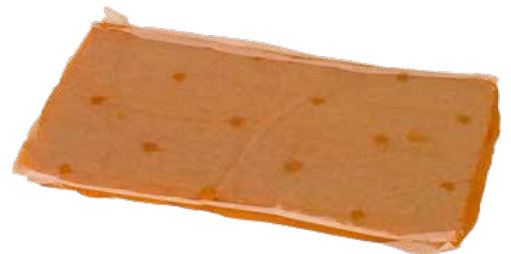
Cat# C606	\$23.95	SHP WT - 1 lb
-----------	---------	---------------



AP23 Pollen Patty

AP23 is an artificial pollen 1 lb patty and is the 23rd formulation to be developed and tested. AP23 is a high protein feed developed and formulated to deliver all of the nutrient levels, in a highly palatable blend of specifically selected ingredients. AP23 helps maintain colony strength by boosting populations, which result in better crop pollination and honey crops. Individual patty.

Cat# C614		\$2.65	SHP WT - 3 lbs
Cat# C616	Carton of 40	\$76.95	SHP WT - 45 lbs



AP 23 Winter Patty

Similar to the AP23 Pollen Patty, but specifically formulated for winter feeding. It's enough nutrients to help sustain bees through the winter or early spring, but it's not too much to make them too active over winter.

Cat# C610		\$2.45	SHP WT - 3 lbs
Cat# C612	Carton of 40	\$68.98	SHP WT - 45 lbs

AP 23 Pollen Substitute



AP23 is an artificial pollen and is the 23rd formulation to be developed and tested. AP23 is a high protein feed developed and formulated to deliver all of the nutrient levels, in a highly palatable blend of specifically selected ingredients. AP23 helps maintain colony strength by boosting populations, which result in better crop pollination and honey crops. Available in 5 pound bag and 40 pound bag.

Cat# C378	5 lb Bag	\$19.95	SHP WT - 7 lbs
Cat# C379	40 lb Bag	\$83.99	SHP WT - 42 lbs

Medications



Mite Away Quick Strips

Now available for the treatment of Varroa mites! The treatment lasts for 7 days. It is a single application treatment that fits in the bee space of the brood chamber. Mite Away is a plant-based gel which contains formic acid, that is naturally occurring in honey. Daytime temperature range of 50-92° F. Biodegradable strips. 10 Pack includes 20 strips so it can treat 10 hives, 2 strips/hive. **Not eligible for free shipping.**

Cat# C425	Mite Away Quick Strips - 10 pack	\$62.34	SHP WT - 9 lbs
Cat# C426	Mite Away - 2 pack	\$17.94	SHP WT - 1 lb

Checkmite

Use for treatment of Varroa mites. This is the only treatment that will treat Small Hive Beetles inside the hive. 42-45 day treatment. **Not eligible for free shipping.**



Cat# C420	Checkmite - 10 pack	\$39.95	SHP WT - 1 lb
Cat# C421	Checkmite - 100 pack	\$319.95	SHP WT - 4 lbs

Apilife Var

An alternative, natural Varroa Mite treatment. Up to 95% effective and most effective when temperatures are between 65'-95' F. This takes three applications at 7-10 day intervals. 10 pack will treat approximately 5-6 colonies with 3 wafers/colony (10 pk contains 20 wafers). **Not eligible for free shipping.**



Cat# C417	\$37.80	SHP WT 2 lbs
-----------	---------	--------------

Apiguard

A slow release thymol gel, for the treatment of Varroa Mites. This is a safe, easy to use, organic treatment. Best results occur when daily temperature is between 60-105° Fahrenheit. More information on website. Contains 60-50g treatments in bulk gel form. Tub comes with dosing scoop, spatula, and delivery pads. **Not eligible for free shipping.**



Cat# C430	Apiguard - 10 packets (5 hives)	\$36.50	SHP WT - 2 lbs
Cat# C431	Apiguard - 3KG Tub	\$100.95	SHP WT - 8 lbs

Apivar

Beekeepers now have an effective new amitraz-based medication to treat Varroa mites: Apivar kills up to 99% of mites in one application. Two strips per hive will continually release medication for up to six weeks. **Not eligible for free shipping.**



1 1/2" Wood Spacer

Use this spacer to obtain clearance on top of your brood chamber. The wood spacer can be used for patties or bag feeders or medications.



Cat# W426	\$4.20	SHP WT 2 lbs
-----------	--------	--------------

Cat# C422	Apivar 10 pk	\$36.50	SHP WT - 1 lb
Cat# C428	Apivar 50 pk	\$135.00	SHP WT - 1 lb

Varroa Easy Check

The Varroa Easy Check is a new tool beekeepers have been asking for reliable Varroa monitoring. All beekeeping outfits big and small should have one on hand for quick diagnosis of Varroa infestation levels. The inner cartridge holds the bees and allows the mites to fall through to the outer section to easily count the mite load.



Cat# C615	Varroa	\$19.95	SHP WT - 2 lbs
-----------	--------	---------	----------------

Medications & Treatments

Para-Moth

100% Para-dichlorobenzene, active ingredient. This product aids in keeping Wax Moths and their larvae under control in stored supers. Apply to stored combs in a stack of supers. Place one tablespoon of crystals on a piece of paper on the top bars of every 5th super. Never use on combs containing honey. Air out stored comb 2 days prior to putting on hive.



Cat# C407	Para-Moth	\$15.95	SHP WT - 2 lbs
Cat# C408	Para Moth 5 lb Container	\$38.95	SHP WT - 6 lbs

Para-Moth Drawer

When storing your supers for the season, simply stack 5 high and place the Para-Moth drawer on top, then stack 4 or 5 more so you won't have to unstack to add more para-moth. Easy and convenient.



Cat# W617	\$20.50	SHP WT - 3 lbs
-----------	---------	----------------

Nitrite Gloves

Chemical & puncture resistant. USDA accepted industrial quality.



Cat# M110	Nitrite Gloves - Large	\$3.15	SHP WT - 1 lb
Cat# M111	Nitrite Gloves - Extra Large	\$3.15	SHP WT - 1 lb
Cat# M112	Nitrite Gloves - Medium	\$3.15	SHP WT - 1 lb

Oxalic Acid

Oxalic acid (OA) is a natural acaricide used for treatment against varroa mites in colonies with no/low brood, packages, or swarms. The label presents three different methods for treatment. The 35 gram pack will treat 20 colonies using the direct sprinkle method and 35 colonies with the use of the vaporizer. You must follow those directions exactly, for outdoor use only. Oxalic acid applications are and should be used only in late fall or early spring when little or no brood is present.

Cat# C429	\$5.95	SHP WT - 1 lb
-----------	--------	---------------

Oxalic Acid Vaporizer

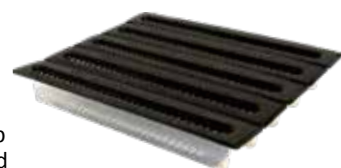
Oxalic acid vaporization has been used in European countries for many years but until recently it was illegal in the United States. Oxalic acid is a naturally organic chemical found in plants and used as a defense mechanism against herbivores. Oxalic acid was registered as a pesticide in 1957 and works to break down the varroa mites exoskeleton system. Vaporization is one of the easiest treatments on the market as it does not require breaking apart the colony to treat. Studies have shown that oxalic acid has a 95% kill rating in a broodless period in hives.



Cat# C308	\$89.99	SHP WT - 5 lbs
-----------	---------	----------------

Beetle Blaster

A new natural way to control small hive beetles developed by Laurence Cutts. Simply fill the trap about halfway with food approved oil and place between the frames. Once it's full, simply throw the trap away.



Cat# C419	\$1.80	SHP WT 2 oz
Cat# C418 100 pk	129.00	SHP WT 2 oz

GardStar Soil Drench 4 fl. Oz.

GardStar is a soil drench. It works on the larval stage of the Small Hive Beetle in the ground. Instructions included. You must NOT use inside the hive. Each bottle makes 23 gallons of solution and each gallon will treat the ground around 6 hives. Remember: Follow all label instructions to the letter. This chemical could be hazardous to domestic animals and aquatic life. Use care when applying any pesticide.



Cat# C505	\$29.95	SHP WT - 2 lbs
-----------	---------	----------------

Beetle Barn

Place small piece of Check-Mite in middle and close top. Place Beetle Barn on top of the frames or on the bottom board.



Cat# C423	\$1.50	SHP WT - 2 oz
-----------	--------	---------------

Beetle Trap Oil Pint

Beetle Trap Oil is a special blend that will attract beetles better than plain oil. A Pint will fill 23 traps.



Cat# C416	\$6.25	SHP WT - 2 lbs
-----------	--------	----------------

Beetle Bee Gone

Beetle Bee-Gone sheets are a natural and chemical free solution for hive beetles. Insert one or more Beetle Bee-Gone sheets in your colony where hive beetles congregate. Your bees will chew the sheets and turn them into "fuzzy" hive beetle traps. Once hive beetles make contact with the "fuzzed up" sheets, they become ensnared and die. Package contains 48 sheets.



Cat# C424	\$7.50	SHP WT - 1 lb
-----------	--------	---------------



Honey Bee Diseases & Pests

Excellent reference book for pest and diseases of Honey Bees. With color photos. Soft Cover, 25 pages.

Cat# M499 | \$17.95 | SHP WT 1 lb



First Lessons in Beekeeping

Dadant's excellent book for the beginning beekeeper. Easy to understand and instructions are explicit for the seasonal handling and care of the bee colony. Also available in Spanish.

Cat# M500 | \$10.95 | SHP WT 1 lb



The Honey Handbook

"The Backyard Beekeeper's Honey Handbook" goes beyond the scope of a cookbook to introduce to readers the literal cornucopia of honey varieties available.

Cat# M502 | \$15.00 | SHP WT 2 lbs



My Hive Tool

This 4 dvd set is a must-have for the beginner beekeeper, as well as the experienced beekeeper. It is the perfect short course for bee clubs and should be on every bee club's bookshelf. Not only does it present you with basic beekeeping techniques, it will also give you the tools you need to get started the right way.

Cat# M498 | \$19.95 | SHP WT 1 lb



Beeswax Alchemy

This book includes information on what to do with all of that beeswax you accumulate. From soaps to household products, this book shows you how to go green and recycle your beeswax.

Cat# M492 | \$24.95 | SHP WT 2 lb



Beekeeping for Dummies

Another great book from the "for Dummies" printers. Its an excellent source of information. Paperback, 392 pages.

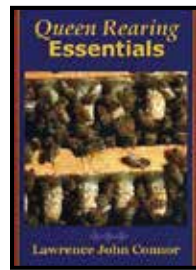
Cat# M501 | \$19.99 | SHP WT 2 lbs



The Backyard Beekeeper

by Kim Flottum is exactly what you need as a beginning beekeeper. Excellent book with useful information and quality photos.

Cat# M497 | \$24.95 | SHP WT 3 lbs



Queen Rearing Essentials

Author Larry Connor describes a very successful queen rearing method using Starter and Finisher colonies. It covers important topics such as Queen and Colony Evaluation, Biology of Cell Production, Making Queen Cells, Cell Finishing, Drone Production, Nucleus Production/Cells, and Evaluating New Queens.

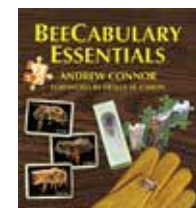
Cat# M472 | \$25.00 | SHP WT 3 lbs



Swarm Essentials

Author Stephen J. Repasky's inaugural publication marks the latest addition to the Essentials series and is an excellent read for any beekeeper who hopes to make it past their first year. Swarm Essentials outlines the ramifications of swarming behavior, proven management techniques, and how to recover and even prosper from a successful swarm attempt.

Cat# M473 | \$23.00 | SHP WT 3 lbs



BeeCabulary Essentials

Designed for future and existing beekeepers to look up terminology used in beekeeping. Chapters are well organized and each one flows easily through the terminology of keeping bees. Each key vocabulary word or term is defined and used to explain both the how and why of beekeeping. The terms are richly illustrated as well.

Cat# M450 | \$34.00 | SHP WT 2 lb

Books, Signs & Gift Certificates

Signs

These are sturdy signs made out of aluminum or corrugated plastic for outdoor use. A very nice way to advertise that you have honeybees. All of these can be mounted with a nail or staple for many years of use.

Cat# M004	Honey For Sale 12x18 heavy aluminum	\$14.95	SHP WT - 1.25 lb
Cat# M005	No Trespassing 11x11 light aluminum	\$3.50	SHP WT - 1 lb
Cat# M003	Local Honey 24x18 corrugated plastic	\$7.95	SHP WT - 1 lb



Metal Sign Stand

Metal stand for "Local Honey For Sale" sign. Can go 8" into the ground to display your sign at a 12" minimum. [Sign Sold Separately](#)

Cat# M002 | \$9.20 SHP WT 2 lb



Gift Certificate

Get that perfect gift for the beekeeper that you know. Not sure what they need? Let them pick out what they really want. You can even chose a custom amount for the gift certificate.

Cat# M001 | \$25.00 (or custom amount)

A

AP 23 Pollen Substitute 33
 AP 23 Pollen Patties 33
 AP 23 Winter Patties 33
 Apiguard 34
 Apilife Var 34
 Apivar 34
 Apollo Jacket 22
 Apollo Suit 22
 Apollo Ventilated Jacket 22
 Apollo Ventilated Jacket with
 Round Veil 22
 Apollo Ventilated Suit 22
 Apollo Ventilated Suit with Round
 Veil 22
 Assembled Frames 12, 13
 Assembled Hives and Supers 10
 Assembly Nails & Staples 12

B

Backyard Beekeeper, The 36
 Bee Brush 27
 Bee Escape 28
 Bee Escape Board 28
 Bee Smart Slicer 28
 Beecabulary Essentials 36
 Beekeeping for Dummies 36
 Beeswax Alchemy 36
 Beetle Barn 35
 Beetle Bee-Gone 35
 Beetle Blaster 35
 Beetle Trap Oil 35
 Beginner Kits 4
 Bottling Bucket 29
 Bucket Bench 29

C

Capping Scratcher 28
 Checkmite 34
 Children's Apollo Suit 22
 CombCapper 28
 Complete Hive 5, 8
 Cotton Coveralls 22
 Crimped Wire Foundation 17, 18
 Cut Comb Foundation 17, 19

E

Entrance Guard 14
 Entrance Reducer 8, 14
 Extractors 32
 Eyelet Punch 25

F

Feeders 9, 15
 First Lessons in Beekeeping 36
 Food Grease 32
 Foundation Device 14
 Frames 11
 Frame Cleaner 25
 Frame Eyelets 25
 Frame Grips 25
 Frame Hammer 12
 Frame Lifter/ Scraper 27
 Frame Nailing Jig 11
 Frame Perch 14
 Frame Replacement Parts 11
 Frame Wire 25
 Fume Board 28

G

Galvanized Hardware Cloth 27
 Gamma Lid 29
 Gift Certificate 37
 Gloves 24
 Guard Star 35
 Queen Rearing Essentials 36

H

Hat and Pull Down Veil Combo
 23
 Hive Bottoms 7, 8
 Hive Carriers 25
 Hive Stands 7, 8
 Hive Tools 27
 Honey Bee Diseases and Pests 36
 Honey B Gone 28
 Honey B Healthy 33
 Honey Container Lids 30
 Honey Containers 30, 31
 Honey Filtering 30
 Honey Handbook 36
 Honey Labels 30
 Honey Refractometer 29

Honey Robber 28
 Honey Storage Tank 32

I

Inner Covers 6, 9
 IPM Board 7, 9

L

L Shaped Rabbits 11

M

Medium Brood Foundation 17, 18
 Migratory Cover 6
 Mite Away Quick Strips 34
 Mouse Guard 14
 Moving Screen 6
 My Hive Tool 36

N

Nitrile Gloves 35
 Nozevit Plus 33
 NUCS 16
 Nylon Zippered Veil Suit 22

O

Order Form 20, 21
 Oxalic Acid 35
 Oxalic Acid Vaporizer 35

P

Pail Perch 29
 Para-Moth 35
 Para-Moth Drawer 35
 Pest & Disease Treatments 34
 Pierco Frames 13
 Pierco Snap In Foundation 13
 Plastic Honey Gate 29
 Plastic Lid Remover 29
 Plastic Pail with Lid 29

Q

Queen Excluders 9, 14
 Queen Supplies 26

R

Replacement veils for Apollo Suit
 23

S

Screen Bottom Boards 7, 9
 Screen Doors 14
 Sign Stand 37
 Signs 37
 Smoker Fuel 27
 Smokers 27
 Spacing Tools 11
 Spur Wire Embedder 25
 Sticky Boards 7, 9
 Stroller 9 Frame Spacers 11
 Support Pins 25
 Swarm Essentials 36
 Swarm Lure 26
 Swarm Trap 26
 Sweat Band 24

T

Telescoping Tops 6, 9
 Thin Surplus Foundation 17, 19

U

Uncapping Knife 29
 Uncapping Plane 29
 Uncapping Roller Punch 29
 Uncapping Tank 28

V

Varroa Easy Check 34
 Veils 23
 Velcro Boot Straps 24
 Ventilated Helmet 23

W

Wax Cardboard NUC 16
 Wire Crimpers 25
 Wood Glue 12
 Wood Spacer 34

Other

10 Frame Equipment 6, 7
 10 Frame Woodenware 5
 8 Frame Equipment 8, 9
 8 Frame Woodenware 8



PRSRT STD
U.S. Postage
PAID
Aberdeen, SD
Permit #200

496 Yellow Banks Road
North Wilkesboro, NC 28659

888-848-5184
336-670-2249

info@millerbeesupply.com
millerbeesupply.com

Pictures from cover, from left to right, top row: Our current location, Owner Presley and employee Chris checking our hives. Middle row: Snapshot of our old sales building, Founder Sebert Miller. Bottom row: construction on our manufacturing building.

info@millerbeesupply.com

www.millerbeesupply.com