



Calc Guide

Chapter 1
Introducing Calc:
Using Spreadsheets in OpenOffice.org

OpenOffice.org

Copyright

This document is Copyright © 2005 by its contributors as listed in the section titled **Authors**. You can distribute it and/or modify it under the terms of either the GNU General Public License, version 2 or later (<http://www.gnu.org/licenses/gpl.html>), or the Creative Commons Attribution License, version 2.0 or later (<http://creativecommons.org/licenses/by/2.0/>).

All trademarks within this guide belong to their legitimate owners.

Authors

Peter Kupfer
Rick Barnes
Jean Hollis Weber
Alexandre Martins

Feedback

Maintainer: Peter Kupfer, peschtra_ooo@yahoo.com
Please direct any comments or suggestions about this document to:
authors@user-faq.openoffice.org

Acknowledgments

Thanks to Robert Scott for proofreading this document.

Publication date and software version

Published 18 December 2005. Based on OpenOffice.org 2.0.



You can download an editable version of this document from
<http://oooauthors.org/en/authors/userguide2/published/>

Contents

Copyright.....	ii
Authors.....	ii
Feedback.....	ii
Acknowledgments.....	ii
Publication date and software version.....	ii
What is Calc?.....	1
Spreadsheets, sheets and cells.....	1
Parts of the main Calc window.....	2
Title bar and Menu bar.....	2
Toolbars.....	3
Formula bar.....	4
Individual cells.....	4
Sheet tabs.....	5
File management.....	5
Starting new spreadsheets.....	5
From the File menu.....	5
From the toolbar.....	5
From the keyboard.....	5
Opening existing spreadsheets.....	5
From the File menu.....	5
From the toolbar.....	5
From the keyboard.....	5
Opening from a template.....	6
Saving spreadsheets.....	7
From the File menu.....	7
From the toolbar.....	7
From the keyboard.....	7
Navigating within spreadsheets.....	8
Going to a particular cell.....	8

Using the mouse.....	8
Using a cell reference.....	8
Using the Navigator.....	8
Moving from cell to cell.....	9
Using the Tab and Enter keys.....	9
Using the cursor keys.....	9
Using Home, End, Page Up and Page Down.....	9
Moving from sheet to sheet.....	10
Using the keyboard.....	10
Using the mouse.....	10
Selecting items in a sheet or spreadsheet.....	12
Selecting cells.....	12
Single cell.....	12
Range of contiguous cells.....	12
Range of non-contiguous cells.....	12
Selecting columns and rows.....	13
Single column.....	13
Single row.....	13
Multiple columns or rows.....	13
Entire sheet.....	13
Selecting sheets.....	13
Single sheet.....	14
Multiple contiguous sheets.....	14
Multiple non contiguous sheets.....	14
All sheets.....	14
Working with columns and rows.....	14
Inserting columns and rows.....	14
Single column or row.....	14
Multiple columns or rows.....	15
Deleting columns and rows.....	15
Single column or row.....	15

Multiple columns or rows.....	15
Working with sheets.....	16
Inserting new sheets.....	16
Deleting sheets.....	17
Single sheet.....	17
Multiple sheets.....	17
Renaming sheets.....	17
Viewing Calc.....	18
Using the zoom function.....	18
Freezing rows and columns.....	19
Freezing single rows or columns.....	19
Freezing a row and a column.....	20
Unfreezing.....	20
Splitting the window.....	20
Splitting the screen horizontally.....	21
Splitting the screen vertically.....	21
Removing split views.....	22
Entering data into a sheet.....	22
Entering numbers.....	22
Entering text.....	22
Entering numbers as text.....	23
Entering dates and times.....	23

What is Calc?

Calc is the spreadsheet component of OpenOffice.org (OOo). You can enter data, usually numerical data, in a spreadsheet and then manipulate this data to produce certain results.

Alternatively you can enter data and then use Calc in a ‘What If...’ manner by changing some of the data and observing the results without having to retype the entire spreadsheet or sheet.

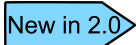
A major advantage of electronic spreadsheets is that the data is easier to alter. If the correct functions and formulas have been used, the program will apply these changes automatically.

Spreadsheets, sheets and cells

Calc works with elements called *spreadsheets*. Spreadsheets consist of a number of individual *sheets*, each containing a block of cells arranged in rows and columns.

These cells hold the individual elements—text, numbers, formulas etc.—which make up the data to be displayed and manipulated.

Each spreadsheet can have many sheets and each sheet can have many individual cells. In version 2.0 of OOo, each sheet can have a maximum of 65,536 rows (1 through 65536) and a maximum of 245 columns (A through IV). This gives 16,056,320 individual cells per sheet.



The number of rows increased from OOo 1.x to 2.0. In 1.0 there were only 32,000 rows.

Parts of the main Calc window

When Calc is started, the main window looks similar to Figure 1.

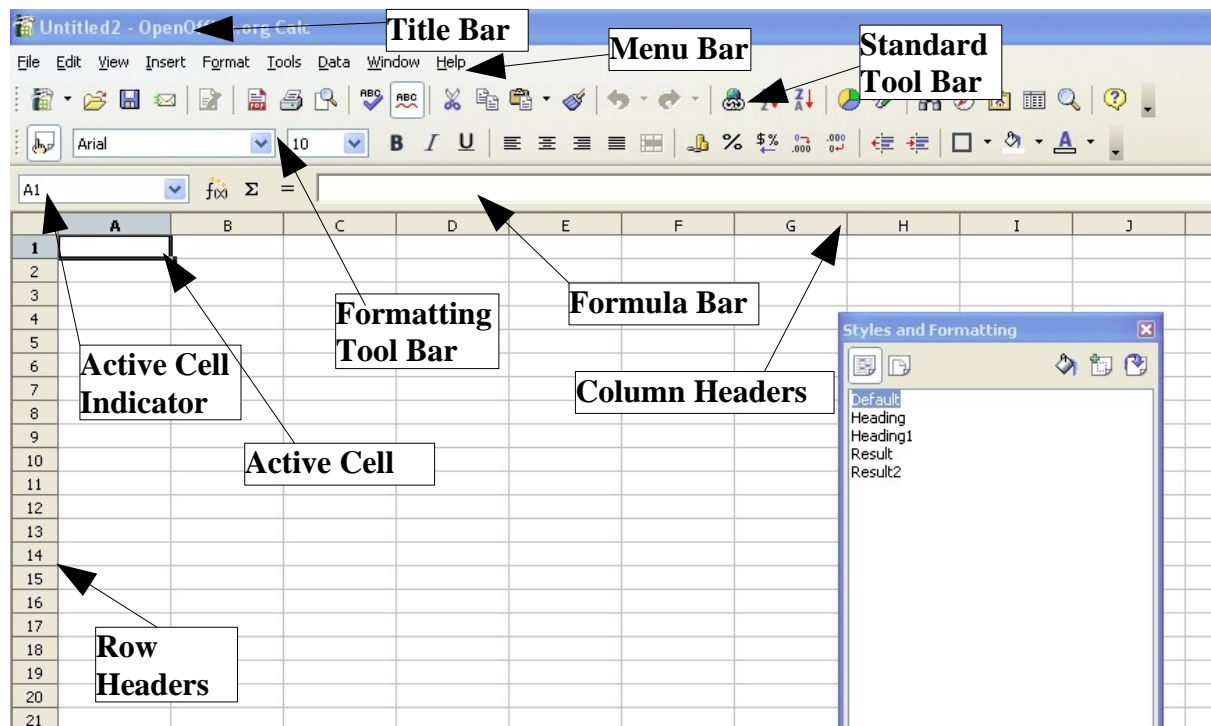
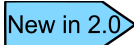


Figure 1. Parts of the Calc window

Title bar and Menu bar

The Title bar, at the top, shows the name of the current spreadsheet. If the spreadsheet is new, then its name is *Untitled X*, with *X* being a number. When you save a new spreadsheet for the first time, you will be prompted to enter a name.



In OOo 2.0 the file name is displayed in the title bar instead of the title of the document. Also, the OOo version is no longer displayed in the title bar.

Under the Title bar is the Menu bar. When you choose one of the menus, a submenu appears with other options. The Menu bar can be modified, as discussed in the chapter titled “Menus and Toolbars” in the *Getting Started* guide.

Toolbars

Under the Menu bar by default are three toolbars: the Standard toolbar, the Formatting toolbar, and the Formula toolbar.

New in 2.0

No toolbars run vertically in OOo 2.0 as they did in 1.x. However, toolbars can be placed vertically on either side of the screen manually by dragging them.

The icons on these toolbars provide a wide range of common commands and functions. The toolbars can be modified, as discussed in the chapter titled “Menus and Toolbars” in the *Getting Started* guide.

Placing the mouse pointer over any of the icons displays a small box, called a tooltip. It gives a brief explanation of the icon’s function. For a more detailed explanation, select **Help > What’s This?** and hover the mouse pointer over the icon you need more help with.

New in 2.0

The extended tips option in OOo 2.0 can no longer be accessed from the **Help** menu. Tips and extended tips can now be turned on or off from **Tools > Options > OpenOffice.org > General**. *What’s This?* help is a new feature in OOo 2.0.

In the Formatting toolbar, there are two rectangular areas on the left. They are the **Font Name** and **Font Size** menus. (See Figure 2). If there is something already in the box, it tells what the current setting for the selected area is.

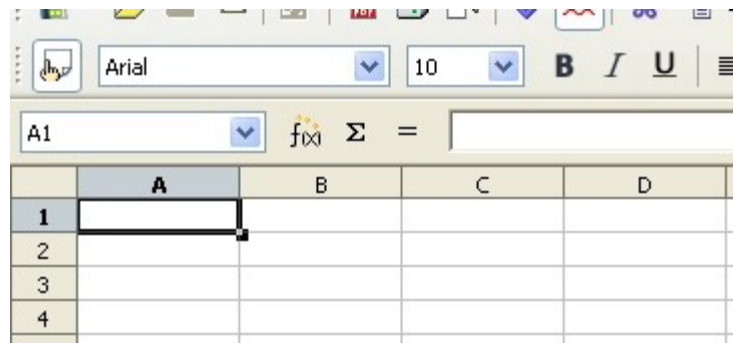


Figure 2. Font name, and font size

Click the little button with an inverted triangle to the right of the box to open a menu. From the **Font Name** and **Font Size** menus, you can change the font and its size in selected cells.

Formula bar

On the left of the Formula bar (see Figure 3) is a small text box, called the **Name** box, with a letter and number combination in it, such as *D7*. This is the column letter and row number, called the cell reference, of the current cell.

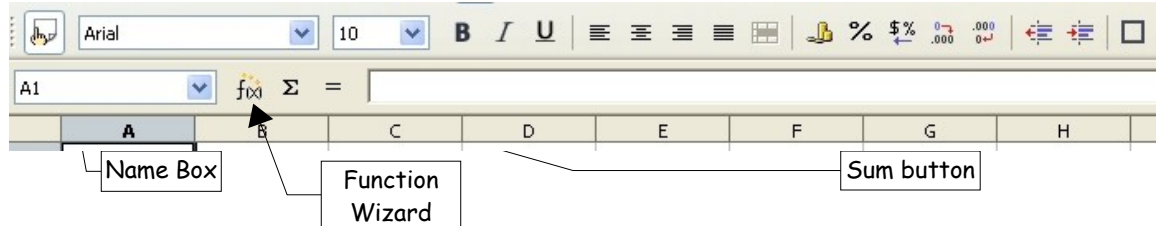




Figure 3. Formula Bar

To the right of the Name box are the the Function Wizard, Sum, and Function buttons.

Clicking the **Function Wizard** button opens a dialog box from which you can search through a list of available functions. This can be very useful, because it also shows how the functions are formatted.

The **Sum** button inserts a formula into the current cell that totals the numbers in the cells above, or to the left if there are no numbers above, the current cell.

The **Function** button inserts an equals sign into the selected cell and the Input Line, thereby setting the cell ready to accept a formula.

When you enter new data into a cell that already contains something, the Sum and Equals buttons change to **Cancel** and **Accept** buttons  .

The contents of the current cell (data, formula, or function) are displayed in the *Input Line*, the remainder of the Formula bar. You can edit the cell contents of the current cell here, or you can do that in the current cell. To edit inside the Input Line area, left-click the appropriate part of the Input Line area, then type your changes. To edit within the current cell, just double-click the cell.

Individual cells

The main section of the screen displays the individual cells in the form of a grid, with each cell being at the intersection of a particular column and row.

At the top of the columns and at the left-hand end of the rows are a series of gray boxes containing letters and numbers. These are the column and row headers. The columns start at A and go on to the right and the rows start at 1 and go on downwards.

These column and row headers form the cell references that appear in the *Sheet Area* box on the Formula Bar (see Figure 3). These headers can also be turned off by selecting **View > Column & Row Headers**.

Sheet tabs

At the bottom of the grid of cells are the sheet tabs (see Figure 4). These tabs enable access to each individual sheet, with the visible, or active, sheet having a white tab.

Clicking on another sheet tab displays that sheet and its tab turns white. You can also select multiple sheet tabs at once by holding down the *Control* key while you click the names.



Figure 4. Sheet tabs

File management


Starting new spreadsheets

A new spreadsheet can be opened regardless of which other component of OOo you are using at the time. For example, a new spreadsheet can be opened from Writer or Draw.

From the File menu

Click on the **File** menu and then select **New > Spreadsheet**.

From the toolbar

Use the **New Document**  button on the Standard toolbar. (This button is always a page of text from the current component with a black arrow to the right.) A long-click (click and hold) on the **New Document** button opens a submenu from which you can choose Spreadsheet (or any other type of OOo document). This submenu can also be opened by single-clicking on the black arrow next to the **New Document** button.

From the keyboard

If you already have a spreadsheet open, you can press *Control+N* to open a new spreadsheet.

Opening existing spreadsheets

From the File menu

Click on the **File** menu and then select **Open**.

From the toolbar

Click the **Open** button  on the **Standard toolbar**.

From the keyboard

Use the key combination *Control+O*.

Each of these options displays the Open dialog box (Figure 5), where you can locate the spreadsheet that you want to open.

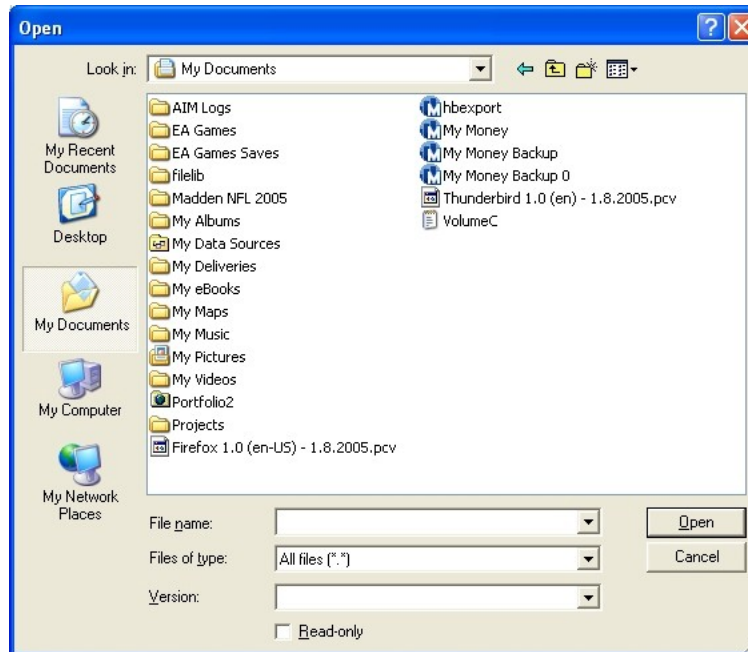


Figure 5. Open File dialog

TIP You can also open a spreadsheet that has been recently worked on using the Recently Opened Files list. This list can be accessed from the **File** menu, directly below **Open**. The list displays the last 10 files that were opened in any of the OOO components.

Opening from a template

Calc documents can also be created from templates, if you have any spreadsheet templates available. Follow the above procedures, but instead of selecting Spreadsheet from the menu, select **Templates and Documents**. On the Templates and Documents window, navigate to the appropriate folder and double-click on the required template. A new spreadsheet, based on the selected template, opens.


Saving spreadsheets

Spreadsheets can be saved in three ways.

From the File menu

Click on the **File** menu and then select **Save**.

From the toolbar

Click on the **Save** button  on the Function bar. This button will be greyed-out and unselectable if the file has been saved and no subsequent changes have been made.

From the keyboard

Use the key combination *Control+S*.

If the spreadsheet has not been saved previously, then each of these actions will open the Save As dialog box (Figure 6). Here you can specify the spreadsheet name and the location in which to save the spreadsheet.

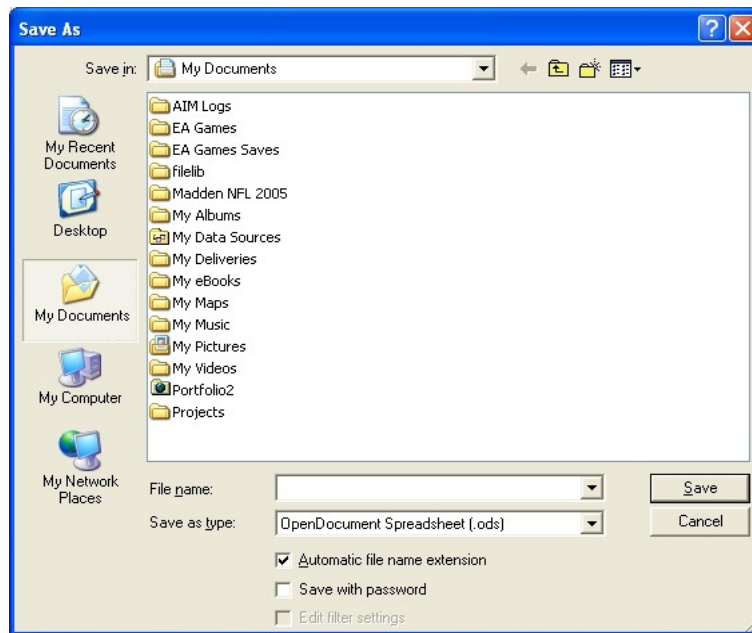


Figure 6. Save As dialog

Note If the spreadsheet has been previously saved, then saving will overwrite the existing copy without opening the Save As dialog box. If you want to save the spreadsheet in a different location or with a different name, then select **File > Save As**.

Navigating within spreadsheets

Going to a particular cell


Using the mouse

Place the mouse pointer over the cell and left-click.

Using a cell reference

Click on the little inverted black triangle just to the right of the Name box (Figure 3). The existing cell reference will be highlighted. Type the cell reference of the cell you want to go to and press *Enter*. Or just click into the Name box, backspace over the existing cell reference and type in the cell reference you want.

Using the Navigator

Click on the Navigator button  in the Standard toolbar (or press *F5*) to display the Navigator. Type the cell reference into the top two fields, labeled Column and Row, and press *Enter*. In Figure 7 the Navigator would select cell F5.

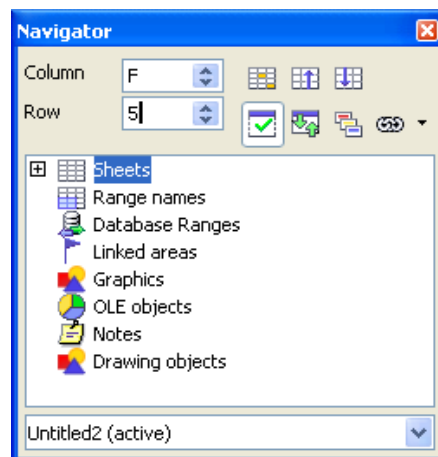


Figure 7. Calc Navigator

Moving from cell to cell

In the spreadsheet, one cell, or a group of cells, normally has a darker black border. This black border indicates where the *focus* is (see Figure 8).

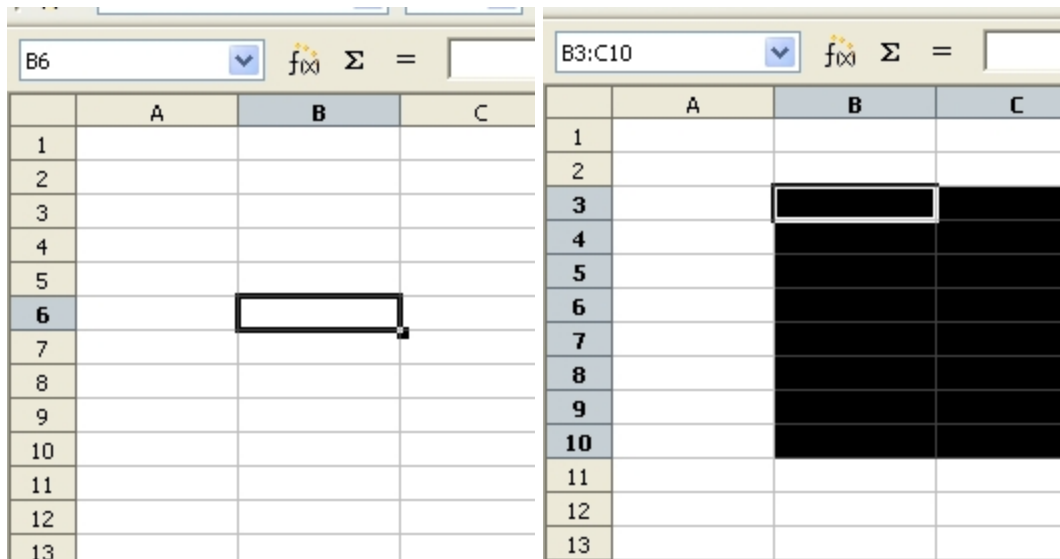


Figure 8. (Left) One selected cell and (right) a group of selected cells

Using the Tab and Enter keys

- Pressing *Enter* or *Shift+Enter* moves the focus down or up, respectively.
- Pressing *Tab* or *Shift+Tab* moves the focus right or left, respectively.

Using the cursor keys

Pressing the cursor keys on the keyboard moves the focus in the direction of the arrows.

Using Home, End, Page Up and Page Down

- *Home* moves the focus to the start of a row.
- *End* moves the focus to the column furthest to the right that contains data.
- *Page Down* moves the display down one complete screen and *Page Up* moves the display up one complete screen.
- Combinations of *Control* and *Alt* with *Home*, *End*, *Page Down*, *Page Up*, and the cursor keys move the focus of the current cell in other ways. Table 1 describes all the keyboard shortcuts for moving about a spreadsheet.

TIP Holding down *Alt+Cursor key* resizes a cell.

Table 1. Moving from cell to cell using the keyboard

Key Combination	Movement
→	Right one cell
←	Left one cell
↑	Up one cell
↓	Down one cell
<i>Control</i> +→	To last column containing data in that row or to Column IV
<i>Control</i> +←	To first column containing data in that row or to Column A
<i>Control</i> +↑	To first row containing data in that column or to Row 1
<i>Control</i> +↓	To last row containing data in that column or to Row 32000
<i>Control</i> +Home	To Cell A1
<i>Control</i> +End	To lower right hand corner of the square area containing data
<i>Alt</i> +PgDn	One screen to the right (if possible)
<i>Alt</i> +PgUp	One screen to the left (if possible)
<i>Control</i> +PgDn	One sheet to the right (in Sheet Tabs)
<i>Control</i> +PgUp	One sheet to the left (in Sheet Tabs)
<i>Tab</i>	To the cell on the right
<i>Shift</i> + <i>Tab</i>	To the cell on the left
<i>Enter</i>	Down one cells
<i>Shift</i> + <i>Enter</i>	Up one cell

Moving from sheet to sheet

Each sheet in a spreadsheet is independent of the others though they can be linked with references from one sheet to another. There are three ways to navigate between different sheets in a spreadsheet.

Using the keyboard

Pressing *Control*+PgDn moves one sheet to the right and pressing *Control*+PgUp moves one sheet to the left.

Using the mouse

Clicking one of the Sheet Tabs (see Figure 4) at the bottom of the spreadsheet selects that sheet.

If you have a lot of sheets, then some of the sheet tabs may be hidden behind the horizontal scroll bar at the bottom of the screen. If this is the case, then the four buttons at the left of the sheet tabs can move the tabs into view. Figure 9 shows how to do this.

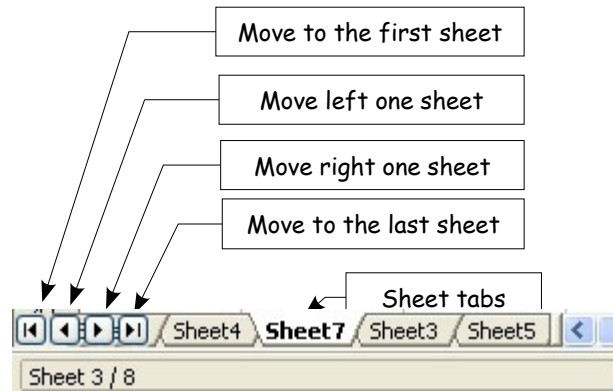


Figure 9. Sheet tab arrows

Notice that the sheets here are not numbered in order. Sheet numbering is arbitrary – you can name a sheet as you wish.

Note The sheet tab arrows that appear in Figure 9 only appear if you have some sheet tabs that can not be seen. Otherwise they will appear faded as in Figure 4.

Selecting items in a sheet or spreadsheet

Selecting cells

Cells can be selected in a variety of combinations and quantities.

Single cell

Left-click in the cell. The result will look like the left side of Figure 4. You can verify your selection by looking in the Name box.

Range of contiguous cells

A range of cells can be selected using the keyboard or the mouse.

To select a range of cells by dragging the mouse:

- 1) Click in a cell.
- 2) Press and hold down the left mouse button.
- 3) Move the mouse around the screen.
- 4) Once the desired block of cells is highlighted, release the left mouse button.

To select a range of cells without dragging the mouse:

- 1) Click in the cell which is to be one corner of the range of cells.
- 2) Move the mouse to the opposite corner of the range of cells.
- 3) Hold down the *Shift* key and click.

To select a range of cells without using the mouse:

- 1) Select the cell that will be one of the corners in the range of cells.
- 2) While holding down the *Shift* key, use the cursor arrows to select the rest of the range.

The result of any of these methods will look like the right side of Figure 4.

TIP You can also directly select a range of cells using the Name box. Click into the Name box as described in “Using a cell reference” on page 8. To select a range of cells, enter the cell reference for the upper left hand cell, followed by a colon (:), and then the lower right hand cell reference. For example, to select the range that would go from A3 to C6, you would enter *A3:C6*.

Range of non-contiguous cells

- 1) Select the cell or range of cells using one of the methods above.
- 2) Move the mouse pointer to the start of the next range or single cell.
- 3) Hold down the *Control* key and click or click-and-drag to select a range.
- 4) Repeat as necessary.

New in 2.0

In OOo v2.0 when you are selecting non-contiguous cells, the first part of your set does **not** have to be multiple cells. In OOo 1.x you had to select more than one cell as the first part of a non-contiguous range.

Selecting columns and rows

Entire columns and rows can be selected very quickly in OOo.

Single column

To select a single column, click on the column identifier letter (see Figure 1).

Single row

To select a single row, click on the row identifier number (see Figure 1).

Multiple columns or rows

To select multiple columns or rows that are contiguous:

- 1) Click on the first column or row in the group.
- 2) Hold down the *Shift* key.
- 3) Click the last column or row in the group.

To select multiple columns or rows that are not contiguous:

- 1) Click on the first column or row in the group.
- 2) Hold down the *Control* key.
- 3) Click on all of the subsequent columns or rows while holding down the *Control* key.

Entire sheet

To select the entire sheet, click on the small box between the A column header and the 1 row header (see Figure 10).

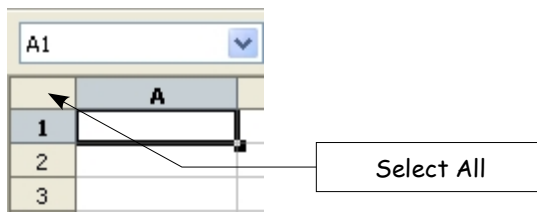


Figure 10. Select all box

You can also use the keyboard to select the entire sheet by pressing *Control+A*.

Selecting sheets

You can select either one or multiple sheets. It can be advantageous to select multiple sheets at times when you want to make changes to many sheets at once.

Single sheet

Click on the sheet tab for the sheet you want to select. The active sheet will become white (see Figure 4).

Multiple contiguous sheets

To select multiple contiguous sheets:

- 1) Click on the sheet tab for the first sheet.
- 2) Move the mouse pointer over the last sheet tab.
- 3) Hold down the *Shift* key and click on the sheet tab.

All the tabs between these two sheets will turn white. Any actions that you perform will now affect all highlighted sheets.

Multiple non contiguous sheets

To select multiple non contiguous sheets:

- 1) Click on the sheet tab for the first sheet.
- 2) Move the mouse pointer over the second sheet tab.
- 3) Hold down the *Control* key and click on the sheet tab.
- 4) Repeat as necessary.

The selected tabs will turn white. Any actions that you perform will now affect all highlighted sheets.

All sheets

Right-click over any one of the sheet tabs and select **Select All Sheets** from the popup menu

Working with columns and rows

Inserting columns and rows

Columns and rows can be inserted in several different way and quantities.

Single column or row


A single column or row can be added using the **Insert** menu:

- 1) Select the column or rows where you want the new column or row inserted.
- 2) Select either **Insert > Columns** or **Insert > Rows**.

Note When you insert a single new column, it is inserted to the left of the highlighted column. When you insert a single new row, it is inserted above the highlighted row.

A single column or row can also be added using the mouse:

- 1) Select the column or rows where you want the new column or row inserted.
- 2) Right-click the header.
- 3) Select **Insert Rows** or **Insert Columns**.

A blue arrow-shaped icon pointing to the right, containing the text "New in 2.0".

In OOo 2.0 when you open a context menu using the right mouse button, it opens at the location of the mouse pointer. In previous versions of OOo the context menu was always for the selected object, but now it opens for the object the mouse is currently over.

Multiple columns or rows

Multiple columns or rows can be inserted at once rather than inserting them one at a time.

- 1) Highlight the required number of columns or rows by holding down the left mouse button on the first one and then dragging across the required number of identifiers.
- 2) Proceed as for inserting a single column or row above.

Deleting columns and rows

Columns and rows can be deleted individually or in groups.

Single column or row

A single column or row can only be deleted by using the mouse:

- 1) Select the column or row to be deleted.
- 2) Right-click on the column or row header.
- 3) Select **Delete Columns** or **Delete Rows** from the popup menu.

Multiple columns or rows

Multiple columns or rows can be deleted at once rather than deleting them one at a time.

- 1) Highlight the required number of columns or rows by holding down the left mouse button on the first one and then dragging across the required number of identifiers.
- 2) Proceed as for deleting a single column or row above.

Working with sheets

Like any other Calc element, sheets can be inserted, deleted and renamed.

Inserting new sheets

There are many ways to insert a new sheet. The first step for all of the methods is to select the sheets that the new sheet will be inserted next to. Then any of the following options can be used.

- Click on the **Insert** menu and select **Sheet**, or
- Right-click on its tab and select **Insert Sheet**, or
- Click into an empty space at the end of the line of sheet tabs (see Figure 11).



Figure 11. Creating a new sheet

Each method will open the Insert Sheet dialog (Figure 12). Here you can select whether the new sheet is to go before or after the selected sheet and how many sheets you want to insert.

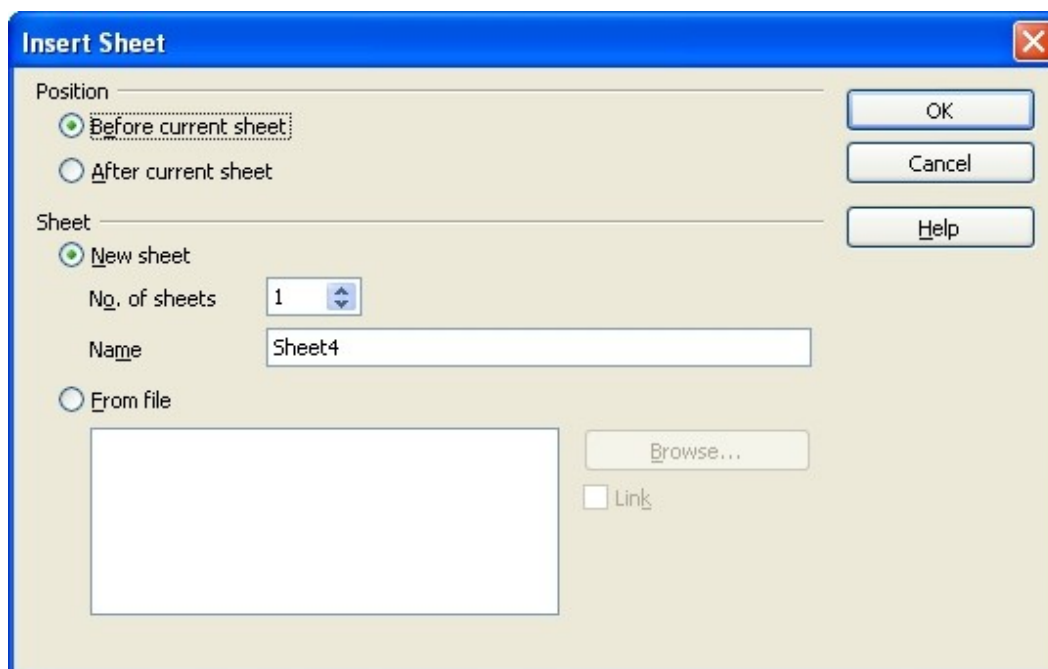


Figure 12. Insert Sheet dialog

Deleting sheets

Sheets can be deleted individually or in groups.

Single sheet

Right-click on the tab of the sheet you want to delete and select **Delete Sheet** from the popup menu.

Multiple sheets

To delete multiple sheets, select them as described earlier, right-click over one of the tabs and select **Delete Sheet** from the popup menu.

Renaming sheets

The default name for the a new sheet is “Sheet X ”, where X is a number. While this works for a small spreadsheet with only a few sheets, it becomes awkward when there are many sheets.

To give a sheet a more meaningful name, you can:

- Enter the name in the name box when you create the sheet, or
- Right-click on a sheet tab and select **Rename Sheet** from the popup menu and replace the existing name with a better one.

Note Sheet names must start with either a letter or a number; other characters including spaces are not allowed, although spaces can be used between words. Attempting to rename a sheet with an invalid name will produce an error message.

Viewing Calc

Using the zoom function

The zoom function allows you to change the view in order to see more or less cells in the window.

The zoom function can be activated by either:

- Going to the **View** menu and selecting **Zoom**, or
- Double-clicking on the percentage figure in the status bar at the bottom of the window.

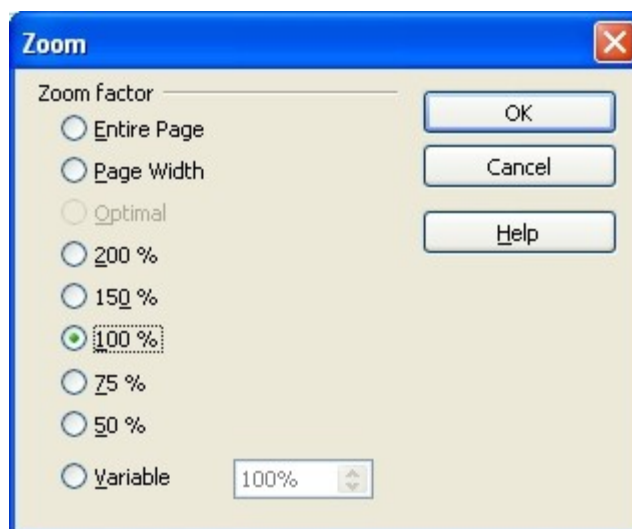


Figure 13. Zoom dialog

Both methods will open the Zoom dialog (Figure 13). This dialog has the following options listed on the left side.

- **Entire Page** – this option changes the view so that an entire page fits within the height and width of the window. The page is defined by the page format that has been applied to the sheet. This can be modified through **Format > Page > Page** tab or through **Format > Styles and Formatting > Page Styles**. In general, OOo will show at least one page within the window.
- **Page Width** – this option changes the view so that the width of the page fits within the width of the screen. The page is defined as above. Where Entire Page can make cells appear quite small, Page Width will show the width of the page while possibly sacrificing the view of the entire height of the page.
- **Optimal** – this option zooms the selected range to fit the screen and is normally greyed out to show that it is not available. To use this option, you must first highlight a range of cells.
- **Percentages** – these options zoom the screen to a particular size, 100% being full size.

- **Variable** – this option allows you to set a zoom percentage of your choice. Either use the up and down arrows to the right of the entry field or click three times in the field to select the current amount and type in your desired zoom level.

Freezing rows and columns

Freezing locks a number of rows at the top of a spreadsheet or a number of columns on the left of a spreadsheet or both. Then when scrolling around within the sheet, any frozen columns and rows remain in view.

Figure 14 shows some frozen rows and columns. The heavier horizontal line between rows 3 and 14 and the heavier vertical line between columns C and H denote the frozen areas.. Rows 4 through 13 and columns D through G have been scrolled off the page. Because the first three rows and columns are frozen into place, they remained.

	A	B	C	H	I	J	K	L	M	N	O	P	Q	R	S	T
1				Safety Poster	Safety Contract	Safety Quiz 2	Unit Conv. Pop Qu	Element Quiz 1	Element Quiz 2	p. 36 15 & 16	Article Quiz	Lab #1	Chp. 1.1 #1-7	p. 35 ?'s	Chp. 1 Test	Penny Density
2		Total	Date	10-02	10-03	10-04	10-05	10-06	10-07	10-08	10-09	10-10	10-11	10-12	10-13	10-14
3	Average	267.5	Possible	28.0	1.0	3.0	12.0	18.0	28.0	4.0	6.0	6.0	3.5	4.0	78.0	11.0
14	78.6%	200.0	Smith, John	28.00	1.00	X	0.00	8.00	26.00	0.00	6.00	0.00	3.50	4.00	55.50	8.00
15	67.9%	181.5	Klein, Mike	28.00	1.00	1.00	11.50	8.00	6.00	0.00	5.00	6.00	3.50	3.50	47.50	10.00
16	72.7%	186.5	Johnson, Tom	27.00	1.00	3.00	0.00	13.00	6.00	0.00	6.00	6.00	3.50	3.00	47.50	9.00
17	82.6%	213.0	Doe, John	27.00	1.00	1.00	2.00	17.00	17.00	4.00	6.00	6.00	3.50	3.50	54.00	9.00
18	96.4%	258.0	Doe, Jane	28.00	1.00	3.00	9.00	16.00	28.00	4.00	6.00	6.00	3.50	4.00	79.50	10.00
19	67.3%	172.0	Kupfer, Peter	26.00	1.00	3.00	X	16.00	20.00	0.00	6.00	6.00	0.00	3.50	41.00	6.50
20	83.9%	224.5	Newton, Issac	28.00	1.00	3.00	6.00	15.00	23.00	4.00	6.00	6.00	3.50	3.50	57.50	9.00
21	80.6%	207.5	Lunak, Robert	26.00	0.00	2.00	5.00	15.00	17.00	4.00	6.00	6.00	3.50	0.00	62.50	9.00
22	78.1%	209.0	Matteson, Brittany	28.00	0.00	3.00	3.00	17.00	22.00	4.00	6.00	6.00	3.50	3.00	47.50	9.00
23	79.4%	212.5	Murphy, Kathleen	26.00	1.00	3.00	6.00	16.00	11.00	4.00	6.00	6.00	3.50	4.00	53.50	9.00
24	81.3%	215.0	Nolan, Emily	28.00	1.00	X	2.00	17.00	19.00	4.00	6.00	6.00	0.00	3.50	64.00	10.00

Figure 14. Frozen rows and columns

You can set the freeze point at one row, one column, or both a row and a column as in Figure 14.

Freezing single rows or columns

- 1) Click on the header for the row below where you want the freeze or for the column to the right of where you want the freeze.
- 2) Select **Window > Freeze**.

A dark line will appear to indicate where the freeze is put.

Freezing a row and a column

- 1) Click into the cell that is immediately below the row you want frozen and immediately to the right of the column you want frozen.
- 2) Select **Window > Freeze**.

You will see two lines appear on the screen, a horizontal line above this cell and a vertical line to the left of this cell. Now as you scroll around the screen everything above and to the left of these lines will remain in view.

Unfreezing

To unfreeze rows or columns, select **Window > Freeze**. The checkmark by **Freeze** should vanish.

Splitting the window

Another way to change the view is by splitting the window – otherwise known as splitting the screen. The screen can be split either horizontally or vertically or both. This allows you to have up to four portions of the spreadsheet in view at any one time.

Why would you want to do this? Imagine you have a large spreadsheet and one of the cells has a number in it which is used by three formulas in other cells. Using the split screen technique, you can position the cell containing the number in one section and each of the cells with formulas in the other sections. Then you can change the number in the cell and watch how it affects each of the formulas.

	A	B	C
1		Beta =	3.2000
2		A0 =	0.1000
5	A1=	Beta*A0*(1-A0)	0.2880
6	A2=	Beta*A1*(1-A1)	0.6562
7	A3=	Beta*A2*(1-A2)	0.7219
8	A4=	Beta*A3*(1-A3)	0.6424
9	A5=	Beta*A4*(1-A4)	0.7351
10	A6=	Beta*A5*(1-A5)	0.6231
11	A7=	Beta*A6*(1-A6)	0.7515
12	A8=	Beta*A7*(1-A7)	0.5975
13	A9=	Beta*A8*(1-A8)	0.7696
14	A10=	Beta*A9*(1-A9)	0.5675
15	A11=	Beta*A10*(1-A10)	0.7854
16	A12=	Beta*A11*(1-A11)	0.5393
17	A13=	Beta*A12*(1-A12)	0.7951
18			

Figure 15. Split screen example

Splitting the screen horizontally

To split the screen horizontally:

- 1) Move the mouse pointer into the vertical scroll bar, on the right-hand side of the screen, and place it over the small button at the top with the black triangle.

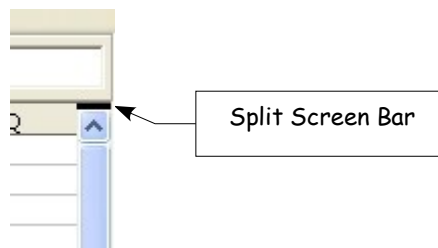


Figure 16. Split screen bar on vertical scroll bar

- 2) Immediately above this button you will see a thick black line (Figure 16). Move the mouse pointer over this line and it will turn into a line with two arrows (Figure 17).



Figure 17. Split screen bar on vertical scroll bar with cursor

- 3) Hold down the left mouse button and a grey line will appear, running across the page. Drag the mouse downwards and this line will follow.
- 4) Release the mouse button and the screen will split into two views, each with its own vertical scroll bar.

Notice in Figure 15, the ‘Beta’ and the ‘A0’ values are in the upper part of the window and other calculations are in the lower part. You may scroll the upper and lower parts independently. Thus you can make changes to the Beta and A0 values and watch their affects on the calculations in the lower half of the window.

You can also split the window vertically as described below—with the same results, being able to scroll both parts of the window independently. With both horizontal and vertical splits, you have four independent windows to scroll.

Splitting the screen vertically

To split the screen vertically:

- 1) Move the mouse pointer into the horizontal scroll bar at the bottom of the screen and place it over the small button on the right with the black triangle.

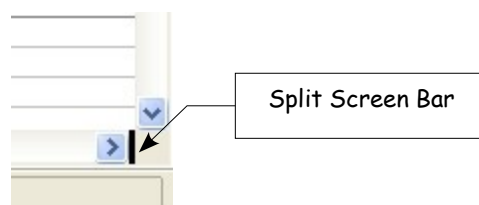


Figure 18: Split bar on horizontal scroll bar

- 2) Immediately to the right of this button you will see a thick black line (Figure 18). Move the mouse pointer over this line and it will turn into a line with two arrows.
- 3) Hold down the left mouse button and a grey line will appear, running up the page. Drag the mouse to the left and this line will follow.
- 4) Release the mouse button and the screen will be split into two views, each with its own horizontal scroll bar.

Note Splitting the screen horizontally and vertically at the same time will give four views, each with its own vertical and horizontal scroll bars.

Removing split views

- Double-click on each split line, or
- Click on and drag the split lines back to their places at the ends of the scroll bars, or
- Select **Window > Split**. This will remove all split lines at the same time.

TIP You can also split the screen following the same procedure as freezing rows and columns on page 19. Follow those steps, but instead of choosing **Window > Freeze**, choose **Window > Split**.

Entering data into a sheet

Entering numbers

Select the cell and type in the number using either the top row of the keyboard or the numeric keypad.

To enter a negative number, either type a minus (–) sign in front of it or enclose it in brackets ().

By default numbers are right-aligned and negative numbers have a leading minus symbol.

Entering text

Select the cell and type the text. Text is left-aligned by default.

Entering numbers as text

If a number is entered in the format *01481*, Calc will drop the leading 0. To preserve the leading zero, in the case of telephone area codes for example, precede the number with an apostrophe, like this: *'01481*. However, the data is now regarded as text by Calc. Arithmetic operations will not work on it. It will either be ignored or will produce an error of some kind.

TIP Numbers can have leading zeros and be regarded as numerical entries if the cell is formatted appropriately. Right-click on the cell and choose the **Format Cells > Numbers**. Adjusting the leading zeros setting can add leading zeros to numbers.

Entering dates and times

Select the cell and type the date or time. You can separate the date elements with a slant (/) or a hyphen (-) or use text such as 10 Oct 03. Calc recognizes a variety of date formats. You can separate time elements with colons such as 10:43:45.