

OMEGA STUDIO™ SOFTWARE INSTALLATION GUIDE



SOFTWARE INSTALLATION CD

lexicon[®]
PRO

INCLUDES: Omega USB I/O Mixer Drivers
Steinberg® Cubase LE®
Lexicon Pantheon™

Compatible with Windows® XP Home or Professional and Mac® OS X ver. 10.2.8 or later | © 2004 Harman International | 180546-A

lexicon[®]
PRO

USB Device Drivers, Cubase LE
Setup, and Pantheon™ Reverb
Plug-in for Windows® XP

Cubase LE Setup and
Pantheon™ Reverb Plug-in
for Mac® OS X

Congratulations on your purchase of the Lexicon Omega Studio. This guide contains the information needed to install the required USB drivers and Steinberg's Cubase LE recording software for use with your Lexicon Omega hardware on either Windows® XP or Mac® OSX computer systems. Please follow these instructions carefully to ensure smooth installation of each of these components.

OMEGA STUDIO™ FOR WINDOWS® XP USERS

A. INSTALLING THE LEXICON USB DRIVERS

You must install the USB drivers to use your Lexicon Omega's USB connection with your computer. Follow the directions listed in the following section to complete the installation process.

1. Start your computer. Close any open programs you have running.
2. Take your Lexicon Omega hardware out of the box and plug the power in.
3. Connect the included USB cable to your computer and to the Omega.
4. You will see multiple messages pop up from the task bar indicating that your computer has found a new USB device. There will be multiple messages because there are four USB devices in the Omega. When Windows displays the message "Your new hardware is installed and ready to use", Windows has completed identifying your new hardware. However, your software installation **IS NOT** complete.
5. Put the Omega Studio Software Installation disk into your computer's CD-ROM drive. If you have Autorun enabled, the Omega Driver Installer Setup Wizard will automatically launch. If it does not launch automatically, you can open it by selecting **Start > Run** and entering **D:\Omega.exe** (where **D:** is the letter of your CD-ROM drive).
6. Next, select the language that you'd like to run the installer in.
7. Continue selecting **Next** and choose **I agree** to the terms of the License Agreement.
8. Select the Omega Driver Installer Software components (Cubase LE, Pantheon Reverb Plug-In, and Help Files) that you wish to install and click **Next**.
9. Choose your desired installation folder, or use the default setting and select **Install**.
10. You will now see the window shown below. Click **Next** to continue and follow the onscreen instructions for the remainder of the installation.



11. During this process you may be asked (4 times) to continue or stop the installation. Click **Continue Anyway** each time as shown below.



12. Click Finish to complete the Driver Installation.

Note: If you chose to install Cubase LE in Step 8, the installation of Cubase LE will now begin. Skip Steps 1 and 2 of the next section and continue following the rest of the instructions to correctly install Cubase LE.

B. INSTALLING CUBASE LE RECORDING SOFTWARE

1. Start your computer. Close any open programs you have running. Put the Omega Studio Software Installation disk into your CD-ROM drive.
2. If the disk doesn't Autorun, you can open it by selecting **Start > Run** and entering **D:\CubaseNotSilient\Cubase_LE.exe** (where **D:** is the letter of your CD-ROM drive) then click **OK**.
3. Enter your information as directed by the Cubase LE Installer (all required fields are denoted with an asterisk). Your Serial Number is printed on the back of the Lexicon Omega Studio Software CD case (as shown below). Select **OK** to continue with the installation after you've entered all the required information.

Steinberg Cubase LE is an easy-to-use, comprehensive 48-track recording suite that includes all the modules you need to track, edit, and mix your masterpieces.



Lexicon Parthenon™ | World Class Reverb Plug-In
The Lexicon name is synonymous with "the world's best reverb." Parthenon continues this legacy and delivers that "Lexicon Sound" used on most of today's recorded music and movies.



Lexicon Pro 8760 S, Sandy Parkway, Sandy, Utah 84070 | Tel: (801) 568-7567 | Fax: (801) 568-7662 | www.lexiconpro.com

Cubase LE Serial Number: 00000-00000-00000-00000-00000

Steinberg, Cubase LE and ASIO are trademarks of Steinberg Media Technologies GmbH

19.0006

A Harman International Company



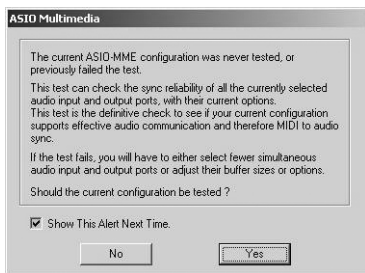
C. SETUP WINDOWS AUDIO AND MIDI

When the Lexicon USB Audio and MIDI drivers were installed, Windows may have automatically selected them as your default audio and MIDI outputs. This means that your Windows sounds will be sent to the Omega rather than your computer's sound card. We need to check if these have been changed and return the settings to what they were before.

1. Select **Start > Control Panel > Sound and Audio Devices**.
2. Select the **Audio** tab.
3. Under **Sound Playback > Default device**, open the pull-down menu and make sure your computer's sound card is selected.
4. Under **Sound Recording > Default device**, open the pull-down menu and make sure your computer's sound card is selected.
5. Under **MIDI Music Playback > Default device**, open the pull-down menu and make sure your MIDI device is selected.

D. USING CUBASE LE WITH THE LEXICON OMEGA STUDIO

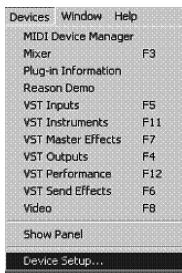
1. Start Cubase LE. The first time you use Cubase LE with the Lexicon Omega Studio you may be asked to run the Multimedia test as shown below. Select **No**.



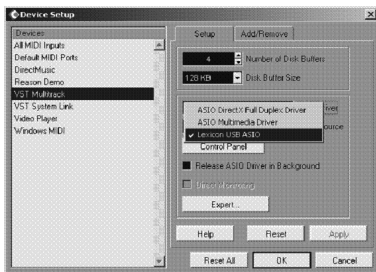
2. Cubase LE will display the following warning that configuration has not been tested. Click **OK**.



3. Once you are into Cubase, go to **Device > Device Setup**.



4. Under ASIO Drivers, click on **VST Multitrack** and select **Lexicon USB ASIO** if it is not already selected. Click on **Switch** to switch the driver and click **OK**. You are now ready to begin recording using your Omega Studio and Cubase LE.



OMEGA FOR MAC® USERS

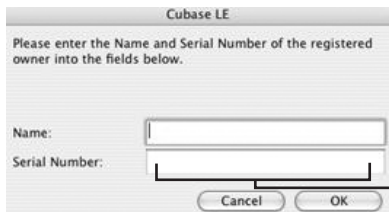
The Omega hardware is designed to interface directly with your Mac computer via USB using OS X's Core Audio drivers. This means no separate driver installation is needed as long as your Mac system software is 10.2.8 or greater (see Apple's website for software update information if your system software is 10.2.8 or earlier).

A. INSTALLING CUBASE LE RECORDING SOFTWARE FOR MAC

1. Start your computer. Close any open programs you have running. Place the Omega Studio Software Installation disk in your CD-ROM drive.
2. Double-click the **Lexicon Installer CD** icon when it appears on your desktop.
3. When the Lexicon Installer window opens, double-click on the **Cubase LE Installer** icon and then click **Continue**.



4. Click **Accept** to agree to the terms of the Software Licensing Contract and continue.
5. Choose your desired installation folder, or use the default setting and select **Install**.
6. Enter your registration information as directed by the Cubase LE Installer. Your Authorization Number is printed on the back of the Lexicon Omega Studio Software Installation CD case (as shown below). You must include the hyphens when entering the number. Select **OK** to continue with the installation after you've entered your name and serial number.



Steinberg Cubase LE is a copy-to-use, comprehensive 48-track recording suite that includes all the modules you need to track, edit, and mix your masterpiece.



Lexicon Pantheon™ 1 World Class Reverb Plug-In
The Lexicon name is synonymous with "the world's best reverb." Pantheon continues this legacy and delivers that "Lexicon Sound" used on most of today's recorded music and movies.



Lexicon Pro 8760 S, Sandy Parkway, Sandy, Utah 84070 | Tel: (801) 568-7347 | Fax: (801) 568-7462 | www.lexiconpro.com

Cubase LE Serial Number: 00000-00000-00000-00000-00000

Steinberg, Cubase LE and MIDI are trademarks of Steinberg Media Technology GmbH

19.0008 P1 A Human International Company



7. Follow the instructions of the onscreen prompts. When the installation is finished, click on **Quit**.

B. INSTALLING THE LEXICON PANTHEON™ FOR MAC

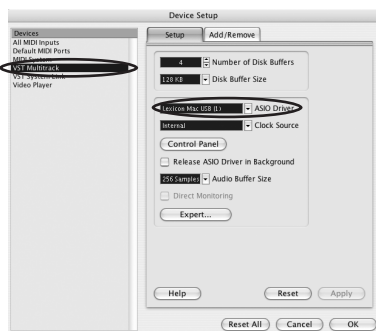
1. Click on the Pantheon VST Installer icon. Next, click **Continue** and then **Install**. When the License Agreement appears, click **Agree** then wait for the Installer to finish and click **Quit**.

C. SETTING UP CUBASE LE FOR USE WITH THE OMEGA STUDIO

1. Take your Lexicon Omega hardware out of the box and plug the power in.
2. Connect the included USB cable to your computer and to the Omega.
3. Open Cubase LE, and go to **Devices > Device Setup** as shown below.



2. Click on **VST Multitrack** and select **Lexicon Mac USB 1** as the ASIO Driver (as shown below).



3. Cubase LE will now ask you if you would like to switch the driver. Select **Switch** then **OK**.



4. Now, go to **Devices > VST Inputs**. Make each of the 4 Mac USB inputs active by clicking on the **Active** buttons and close the box. (If only 2 ports are shown, expand the window to show all 4 ports.)



You are now ready to start recording with Cubase LE.

Lexicon Omega Support

As new recording software becomes available, the Lexicon Omega can be updated to ensure it works properly with these applications. Please check the Lexicon website for future update information.



8760 South Sandy Parkway

Sandy, UT 84070

Tel: (801) 568-7567

Fax: (801) 568-7662

<http://www.lexiconpro.com>

H A Harman International Company



Cubase and ASIO are trademarks of Steinberg Media Technologies GmbH.

Lexicon uses the Nullsoft Scriptable Install System (NSIS) - Copyright © 1999-2004 Nullsoft, Inc.