

# Cubase LE 4 Installation Guide/ Control Surface Operation Guide

This document explains how to install the Cubase LE 4 software on a computer and how to use the HD8/HD16 as a control surface.  
\* Manufacturer names and product names mentioned in this document are trademarks or registered trademarks of their respective owners.

## Cubase LE 4 installation and setup

Perform the following steps to install Cubase LE 4 on a computer and set up the HD8/HD16 to function as a control surface for Cubase LE 4.

### NOTE

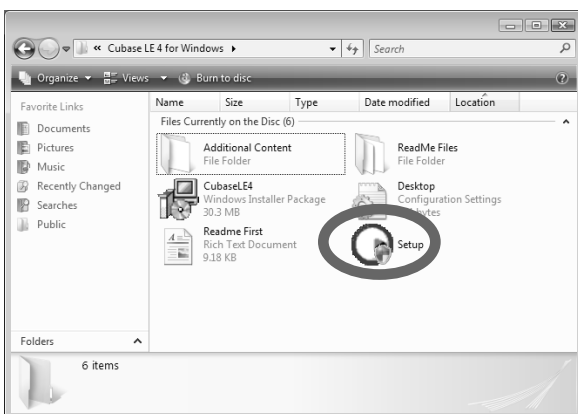
For the following procedure, you will need the "Cubase LE 4" DVD-ROM supplied with this product.

### 1. Use the supplied "Cubase LE 4" DVD-ROM to install the Cubase LE 4 application on your computer.

The procedure differs, depending on the operating system.

#### ■ Windows Vista/XP

- (1) Insert the supplied "Cubase LE 4" DVD-ROM into the DVD drive of the computer.
- (2) A message screen asking about what to do with the inserted DVD-ROM appears. Select "Open folder and show files".
- (3) When the contents of the DVD-ROM are shown, open the "Cubase LE 4 for Windows" folder and double-click on the "Setup.exe" file to start the installation process.



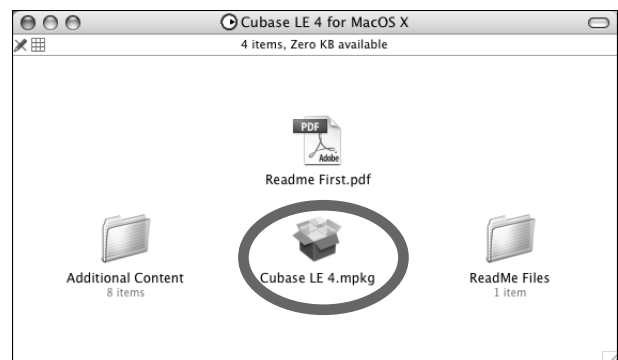
If nothing happens when you insert the DVD-ROM, open the Start menu and select "Computer" ("My Computer" in

Windows XP). Then double-click on the "Cubase LE 4" DVD-ROM icon to display the contents of the DVD-ROM.

#### ■ MacOS X

- (1) Insert the supplied "Cubase LE 4" DVD-ROM into the DVD drive of the Macintosh.
- (2) The contents of the DVD-ROM appear automatically. Open the "Cubase LE 4 for MacOS X" folder and double-click on the "Cubase LE 4.mpkg" file to start the installation process.

If nothing happens when you insert the DVD-ROM, double-click on the "Cubase LE 4" icon shown on the desktop.



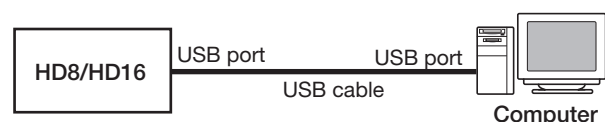
### NOTE

When the installation of Cubase LE 4 is complete, a screen asking about installation of activation (software license authentication) management software appears. Install this software, because it is required for registering Cubase LE 4.

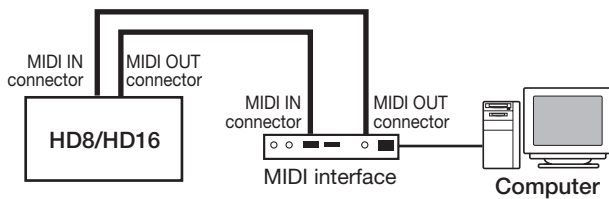
### 2. Connect the HD8/HD16 to the computer.

You can connect the HD8/HD16 either via USB or via the MIDI IN/OUT connectors. (If you use MIDI, the computer must be equipped with a MIDI interface.)

#### ■ Using USB



## ■ Using MIDI IN/OUT connectors



3. Turn power to the HD8/HD16 on.
4. Perform the following steps at the HD8/HD16 to select the connection type.

- (1) From the main screen, press the [PROJECT/UTILITY] key and then use the cursor left/right keys to bring up the indication "SYSTEM" on the second line of the display.

```
REC UTILITY 4/10
>SYSTEM
```

- (2) Press the [ENTER] key.  
The display indication changes as follows.

```
SYSTEM 1/7
>FOOT SWITCH
```

- (3) Use the cursor left/right keys to bring up the indication "CONTROL SURFACE" on the second line of the display, and press the [ENTER] key.

```
Control Surface
USB
```

This indication shows the currently selected connection type.

- (4) Turn the dial to select "USB" (connection via USB port) or "MIDI I/O" (connection via MIDI IN/OUT connectors). The remote operation signals will be sent via the interface selected here.
- (5) Press the [EXIT] key repeatedly to return to the main screen.

## Switching the HD8/HD16 to control surface mode

To switch the HD8/HD16 to control surface mode, proceed as follows. Within control surface mode, select "Mackie Control" as operation mode.

1. At the main screen of the HD8/HD16, hold down the [SHIFT] key and press pad 2 (CONTROL SURFACE).

An indication for confirming the switch to control surface mode appears.

2. Press the [ENTER] key.

The HD8/HD16 switches to control surface mode.

```
Stat: Mute Bank: 1
PAN
```

3. Press the [FUNCTION] key.

The CTRLR SETUP screen for making control surface mode settings appears.

```
CTRLR SETUP 1/1
>MODE SELECT
```

4. Verify that the indication "MODE SELECT" is shown on the second line of the display, and press the [ENTER] key.

The control surface mode selection screen appears.

```
Mode Select
Generic Remote
```

This screen allows selection of two operation modes.

- **Generic Remote**

This setting serves for controlling Cubase LE in Generic Remote mode.

### NOTE

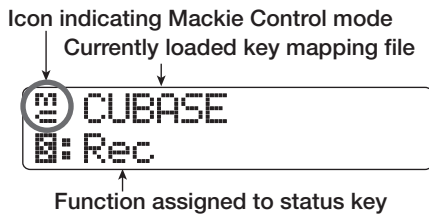
It is not possible to operate Cubase LE 4 in Generic Remote mode. Be sure to select Mackie Control mode.

- **Mackie Control**

With this setting, the HD8/HD16 emulates the operation of a Mackie Control.

5. Turn the dial to select "Mackie Control" and press the [ENTER] key.

The HD8/HD16 is now set to Mackie Control mode, and the display changes as follows.



The first line of the display shows the Mackie Control mode icon and the currently loaded key mapping file (a setup file that assigns the control keys of the HD8/HD16 to DAW software functions). The second line shows the function currently assigned to the status key.

## 6. Next, load a key mapping file for Cubase LE 4, as follows.

- (1) Press the [FUNCTION] key to bring up the control surface setup screen.



- (2) Use the cursor left/right keys to bring up the indication "FILE SELECT" on the display, and press the [ENTER] key.

The key mapping file selection screen appears.



Key mapping file name

- (3) Turn the dial to select the Cubase LE 4 key mapping file "CUBASE.BDF", and press the [ENTER] key.

The key mapping file is loaded.

### NOTE

- When Mackie Control mode and USB mass storage mode are being used simultaneously, a key mapping file cannot be loaded.
- If you want to use Mackie Control mode and USB mass storage mode simultaneously, load the key mapping file first and then activate the USB mass storage mode.
- For details on simultaneous use of the USB mass storage mode, see the section "Using Mass Storage Mode and Control Surface Mode Simultaneously" in the operation manual of the HD8/HD16.

### HINT

The HD8/HD16 comes with a key mapping file for Cubase LE 4

built in. Regarding files for other DAW software applications, please visit the web site of ZOOM Corporation (<http://www.zoom.co.jp>).

### NOTE

- It is not possible to operate Cubase LE 4 in Generic Remote mode. Be sure to select Mackie Control mode.
- If the above screen appears when selecting control surface mode in step 2, Mackie Control mode is already selected. In this case, steps 3 - 5 are not required.

## Starting Cubase LE 4 and making settings

Start Cubase LE 4 as described below and select Mackie Control as control surface type.

### 1. Start Cubase LE 4.

The startup procedure differs, depending on the platform and operating system.

#### ■ Windows Vista/XP

Double-click on the Cubase LE 4 icon that was placed on the desktop during installation.

#### ■ MacOS X

Double-click on the Cubase LE 4 icon that was placed in the "Applications" folder during installation.

### NOTE

Be sure to start Cubase LE 4 only after setting the HD8/HD16 to control surface mode.

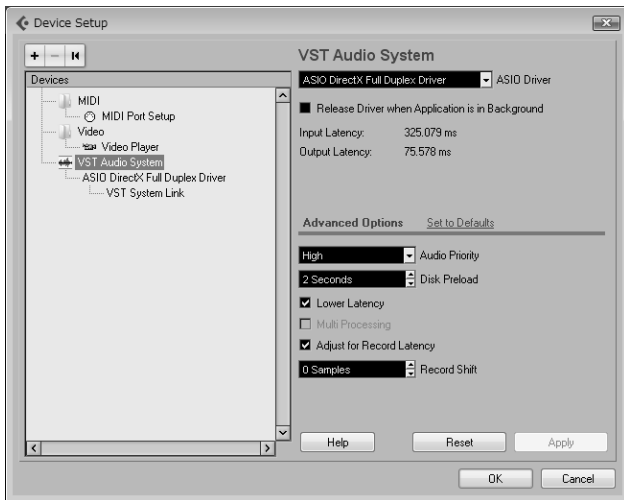
To continue using Cubase LE 4, a process called activation (license authentication and product registration) is necessary. When you start Cubase LE 4, a screen offering to register the product will appear. Select "Register Now". A web site for registration will open in your Internet browser. Follow the instructions on that page to register and activate the product.

### HINT

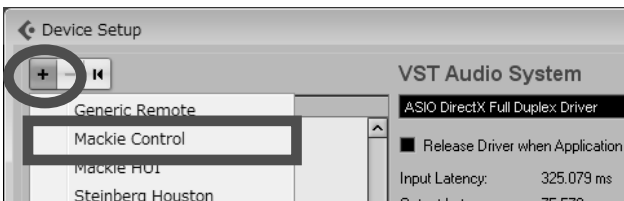
The subsequent steps are the same for Windows Vista/XP and MacOS X. The screen examples shown here are from Windows Vista.

### 2. After starting Cubase LE 4, select "Device Setup..." from the "Devices" menu.

The device setup window for selecting the remote device type appears.



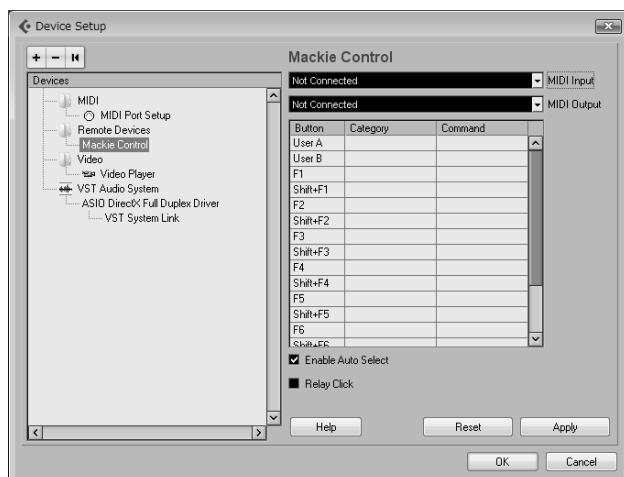
**3.** Click the "+" button at the top left of the device setup window and select "Mackie Control" from the menu that appears.



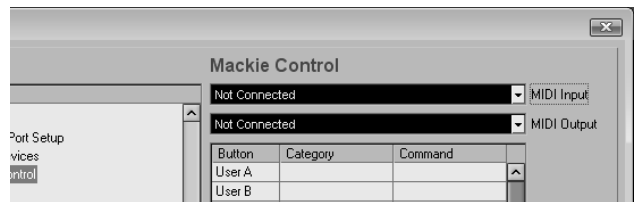
This will add the "Mackie Control" entry to the remote device list on the left side of the device setup window.

**4.** Select "Mackie Control" in the list on the left side of the device setup window.

The display changes as follows.



**5.** Use the MIDI Input port and MIDI Output port pull-down menus at the right side of the device setup window to select the MIDI port to which the HD8/HD16 is connected.



**■ When connected via USB**

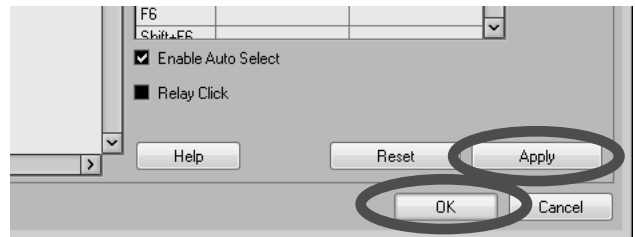
Select "HD8" or "HD16" (or "USB Audio Device" in Windows XP) in the MIDI Input and MIDI Output pull-down menus.

**■ When connected via MIDI**

Select the corresponding MIDI port of the MIDI interface or similar.

**6.** Click the "Apply" button and then click the "OK" button.

The device setup window closes. The HD8/HD16 can now be used to remotely control the Cubase LE 4 application.



**HINT**

The settings are automatically saved by Cubase LE 4. When you start Cubase LE 4 the next time, the setup procedure is no longer necessary.

**Terminating the control surface mode**

To terminate the control surface mode and return the HD8/HD16 to normal operation, proceed as follows.

**1.** From the main screen, hold down the [SHIFT] key and press pad 2 (CONTROL SURFACE).

The display indication changes as follows.



**2.** Press the [ENTER] key.

The main screen appears again and the HD8/HD16 resumes normal recorder operation.

# Using the control surface mode

This section describes use of the HD8/HD16 when the unit is switched to control surface mode.

## About the control surface mode

When the HD8/HD16 is switched to control surface mode and Mackie Control has been selected as operation mode, the keys and faders of the HD8/HD16 can be used to remotely control the transport and mixing functions of Cubase LE 4.

When you switch the HD8/HD16 to control surface mode and select Mackie Control as operation mode, the display indication changes as follows.

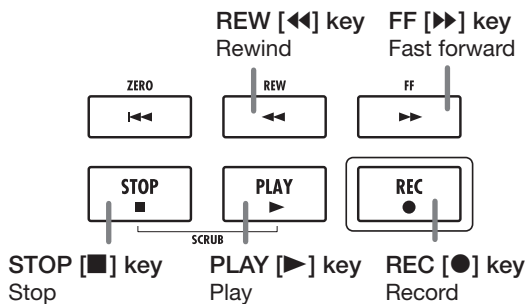


In control surface mode, the HD8/HD16 recorder functions are not available, and the knobs and keys on the panel have special functions for Cubase LE 4. The level meters of the HD8/HD16 show the fader positions for the Cubase LE 4 tracks.

For a list of functions assigned to the keys and knobs of the HD8/HD16 in Mackie Control mode, see the table "Control surface mode functions at a glance" on page 8 of this document.

## Operating the transport

When the HD8/HD16 is in control surface mode (operation mode: Mackie Control), the keys of the transport section control the following Cubase LE 4 functions.



Regarding the Cubase LE 4 functions of other keys in the function/transport section, see the table "Control surface mode functions at a glance" on page 8 of this document.

## About banks

When the HD8/HD16 is in control surface mode (operation mode: Mackie Control), the fader section controls (faders, status keys, parameter knobs) can be used to adjust major parameters of Cubase LE 4.

### NOTE

With the HD8, the [RHYTHM] fader, [RHYTHM] status key, and [RHYTHM] parameter knob can also be used, but with the HD16, these controls are "not assigned".

A group of tracks operated by the fader section controls (faders, status keys, parameter knobs) is called a "bank".

In Mackie Control mode, one bank can comprise up to 8 tracks. For example, if fader 1 is assigned to track 1 of Cubase LE 4, tracks 1 to 8 will be assigned as listed in the tables below.

### ● HD8

Fader	1	2	3	4	5	6	7/8	[RHYTHM]
Controlled track	Tr. 1	Tr. 2	Tr. 3	Tr. 4	Tr. 5	Tr. 6	Tr. 7	Tr. 8

### ● HD16

Fader	1	2	3	4	5	6	7	8
Controlled track	Tr. 1	Tr. 2	Tr. 3	Tr. 4	Tr. 5	Tr. 6	Tr. 7	Tr. 8

The following keys can be used to change the track (channel) assignment of the fader section controls.

### ● [AUTO PUNCH IN/OUT] key (<CHANNEL)

Shifts the track (channel) assignment of the fader section controls one position back.

### ● [A-B REPEAT] key (CHANNEL>)

Shifts the track (channel) assignment of the fader section controls one position forward.

For example, if tracks 1 to 8 are currently assigned as shown in the tables above, pressing the [A-B REPEAT] key (CHANNEL>) once will change the assignment as listed in the tables below, so that tracks 2 - 9 are now assigned.

### ● HD8

Fader	1	2	3	4	5	6	7/8	[RHYTHM]
Controlled track	Tr. 2	Tr. 3	Tr. 4	Tr. 5	Tr. 6	Tr. 7	Tr. 8	Tr.9

### ● HD16

Fader	1	2	3	4	5	6	7	8
Controlled track	Tr. 2	Tr. 3	Tr. 4	Tr. 5	Tr. 6	Tr. 7	Tr. 8	Tr.9

### ● [TRACK PARAMETER] key (<BANK)

Shifts the track (channel) assignment of the fader section controls back by 8 tracks.

### ● [INPUT SOURCE] key (BANK>)

Shifts the track (channel) assignment of the fader section controls forward by 8 tracks.

For example, if tracks 2 to 9 are currently assigned as shown in the tables on the preceding page, pressing the [INPUT SOURCE] key (BANK>) once will change the assignment as listed in the tables below.

### ● HD8

Fader	1	2	3	4	5	6	7/8	[RHYTHM]
Controlled track	Tr. 10	Tr. 11	Tr. 12	Tr. 13	Tr. 14	Tr. 15	Tr. 16	Tr. 17

### ● HD16

Fader	1	2	3	4	5	6	7	8
Controlled track	Tr. 10	Tr. 11	Tr. 12	Tr. 13	Tr. 14	Tr. 15	Tr. 16	Tr. 17

## Operating the fader section

The faders, parameter knobs, and status keys of the fader section can be used as follows to adjust track levels and panning, and to switch mute/record standby/solo on and off.

### 1. Assign the Cubase LE 4 track (channel) to operate to the fader section of the HD8/HD16.

For information about assigning tracks, see the section "About banks" on page 5.

### 2. Use the fader and parameter knob to adjust the track level and panning.

The fader and parameter knob control the level and panning value of the assigned track. The [MASTER] fader can be used to adjust the master volume.

### NOTE

With the HD16, the [RHYTHM] fader and [RHYTHM] parameter knob are not assigned (not used).

### 3. The function assigned to the status key can be selected by pressing the [SELECT] key repeatedly.

Available functions to be controlled are Mute, Rec (recording standby), and Solo. Each push of the [SELECT] key cycles the function in the sequence Mute → Rec → Solo. Once the selection is made, the status key then switches the respective function on and off.

### HINT

The function currently assigned to the status key is shown on the second line of the display.

### 4. Press the status key for the respective track to switch the selected function on and off.

## Importing audio data into Cubase LE 4

When the HD8/HD16 is connected to the computer via a USB cable and the HD8/HD16 is set to mass storage mode, audio data of the HD8/HD16 can be imported into Cubase LE 4 audio tracks as WAV files.

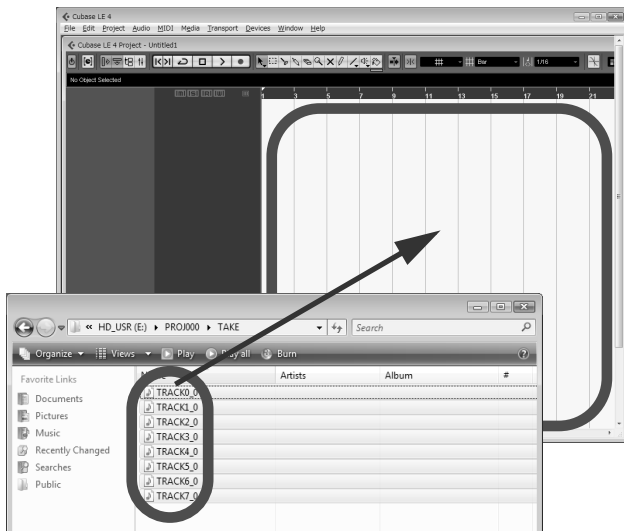
This section explains how to import audio data of the HD8/HD16 into Cubase LE 4.

There are two ways to do this:

- \* Importing by drag & drop
- \* Using the "Import" command

### Importing by drag & drop

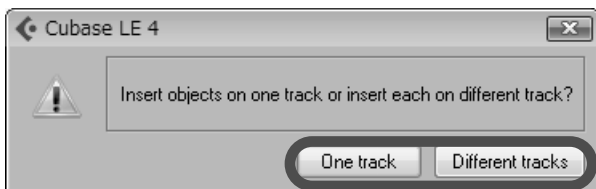
1. Connect the computer and the HD8/HD16 with a USB cable.
2. Switch the HD8/HD16 to mass storage mode.  
For information on how to do this, see page 161 of the operation manual.
3. Start Cubase LE 4 and open the project into which to import the audio data.
4. In the window on the computer screen showing the hard disk of the HD8/HD16, open the "TAKE" folder of the project that contains the desired audio data.  
For information on how to do this, see page 162 of the operation manual.
5. Select the file or files in the "TAKE" folder and drag & drop them onto the Cubase LE 4 project window.



When you drag & drop files, a window for selecting how to sort these files in Cubase LE 4 appears.

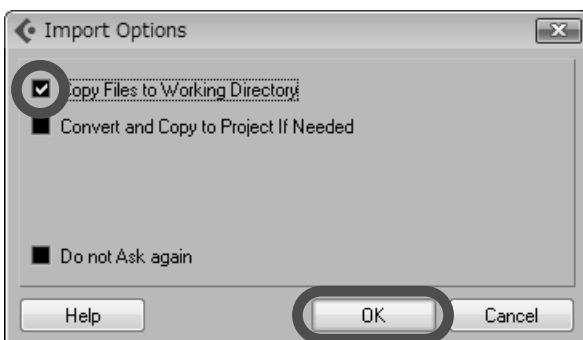
### 6. Click on "Different tracks" or "One track" to select the desired import method.

Normally, you should select "Different tracks". This will cause tracks to be automatically created as needed according to the number of imported files. The files are lined up vertically. When you select "One track", files are lined up horizontally on a single track.



When you have selected the import method, the "Import Options" window appears.

### 7. In the "Import Options" window, select the "Copy Files to Working Directory" check box, and click the OK button.



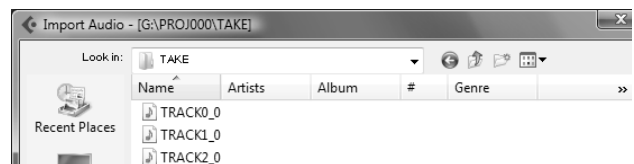
The audio data are loaded into Cubase LE 4 tracks.

## Using the "Import" command

1. Perform steps 1 - 3 of "Importing by drag & drop" to open the Cubase LE 4 project.
2. From the Cubase LE 4 menus, select "File" → "Import" → "Audio File".

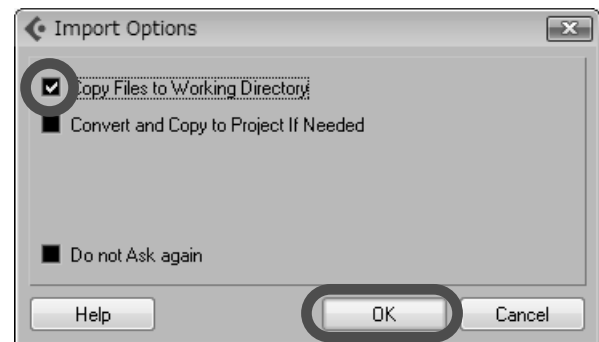
The "Import Audio" window appears.

3. Select the file or files in the "TAKE" folder of the desired project and click the "Open" button.



When you select a file or files, the "Import Options" window appears.

4. Select the "Copy File to Working Directory" check box, and click the OK button.

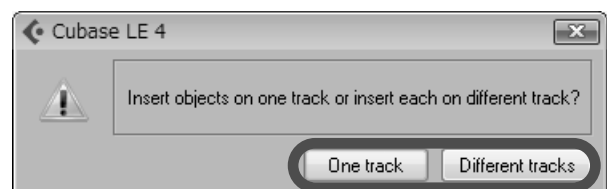


A window for selecting how to sort the imported files in Cubase LE 4 appears.

5. Click on "Different tracks" or "One track" to select the desired import method.

The audio data are loaded into Cubase LE 4 tracks.

Normally, you should select "Different tracks". This will cause tracks to be automatically created as needed according to the number of imported files. The files are lined up vertically. When you select "One track", files are lined up horizontally on a single track.



## Control surface mode functions at a glance

The table below lists the functions that are assigned to the various controls when the HD8/HD16 is in control surface mode (operation mode: Mackie Control).

	HD8/HD16 control	Supplied template sample entry	Assigned function
<b>Fader section</b>	Parameter knob		Adjusts panning for respective track
	Parameter knob [RHYTHM]		HD8: Adjusts panning for respective track HD16: Not assigned
	Status key		Switch Mute, Rec, Solo on/off for respective track
	Status key [RHYTHM]		HD8: Switch Mute, Rec, Solo on/off for respective track HD16: Not assigned
	Fader		Adjust volume of respective track
	Fader [RHYTHM]		HD8: Adjust volume of respective track HD16: Not assigned
	Fader [MASTER]		Adjust master volume
<b>Function/ transport section</b>	[SELECT] key		Switch status key target
	[FUNCTION] key		Open CTRLR SETUP menu
	Cursor left/right/up/down keys		Same as cursor keys on computer
	Dial		Move project cursor position
	[REW] key		Rewind
	[REW] key + [USB] key		Move cursor to beginning of project (zero locate)
	[FF] key		Fast forward
	[FF] key + [USB] key		Move cursor to end of project
	[STOP] key		Stop
	[PLAY] key		Play
	[REC] key		Record
<b>Control section</b>	[NEW PROJECT] key	CYCLE	Switch cycle mode on/off
	[PROJECT/UTILITY] key	PUNCH	Switch punch-in on/off
	[TRACK PARAMETER] key	< BANK	Switch to previous bank
	[INPUT SOURCE] key	BANK >	Switch to next bank
	[BOUNCE] key	MIXER	Open/close mixer window
	[SCENE] key	PROJECT	Make project window active
	[AUTO PUNCH IN/OUT] key	< CHANNEL	Switch to previous channel
	[A-B REPEAT] key	CHANNEL >	Switch to next channel
	[CLEAR] key	SAVE	Save project
	[CLEAR] key + [USB] key		Save as new project
	[MARKER ◀◀] key	PREVIOUS	Go to previous marker
	[MARKER ▶▶] key	NEXT	Go to next marker
	[MARK] key	ADD	Add marker
	[CD-R/RW] key	LEFT	Move project cursor to punch-in point
	[CD-R/RW] key + [USB] key		Set left-side locator (punch-in point)
	[CONTROL SURFACE] key	RIGHT	Move project cursor to punch-out point
	[CONTROL SURFACE] key + [USB] key		Set right-side locator (punch-out point)
	[CONTROL SURFACE] key + [SHIFT] key		Terminate control surface mode
	[USB] key	MC SHIFT	MC (Mackie Control) shift key
	[USB] key + [SHIFT] key		Enable/disable mass storage mode
	[INSERT EFFECT] key	UNDO	Undo
	[INSERT EFFECT] key + [USB] key		Open "Edit History" dialog
	[CHORUS/DELAY] key	REDO	Redo
	[REVERB] key	SOLO DEFEAT	Cancel Solo for all channels
	[REVERB] key + [USB] key		Cancel Mute for all channels
	[PATTERN] key	READ	Switch automation read on/off
	[PATTERN] key + [USB] key		Switch automation read for all channels on/off
[SONG] key	WRITE	Switch automation write on/off	
[SONG] key + [USB] key		Switch automation write for all channels on/off	
[KIT/PROG] key	FLIP	Flip fader and parameter knob functions	



# Cubase LE Installation Guide/ Control Surface Operation Guide

This document explains how to install the Cubase LE software on a computer and how to use the control surface mode of the HD8/HD16.

## Cubase LE installation and setup

Perform the following steps to install Cubase LE on a computer and set up the HD8/HD16 to function as a control surface for Cubase LE.

### NOTE

For the following procedure, you will need the "Cubase LE" CD and the "Factory Recover CD" supplied with the HD8/HD16.

## 1. Use the supplied "Cubase LE" CD to install the Cubase LE application on your computer.

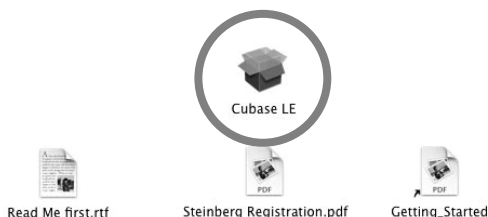
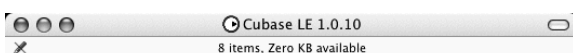
The procedure differs, depending on the operating system.

### ■ Windows XP

When you insert the supplied "Cubase LE" CD into the CD-ROM drive of the computer, the Installer starts up automatically. Follow the on-screen instructions to install Cubase LE.

### ■ MacOS X

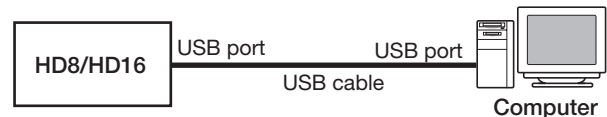
When you insert the supplied "Cubase LE" CD into the CD-ROM drive of the Macintosh, a "Cubase LE" icon appears on the desktop. Double-click on the icon to open it and then use the Installer to install the software.



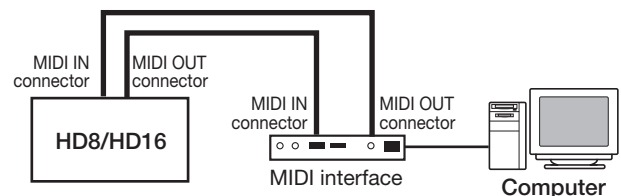
## 2. Connect the HD8/HD16 to the computer.

You can connect the HD8/HD16 either via USB or via the MIDI IN/OUT connectors. (If you use MIDI, the computer must be equipped with a MIDI interface.)

### ■ Using USB



### ■ Using MIDI IN/OUT connectors



## 3. Turn power to the HD8/HD16 on.

## 4. Perform the following steps at the HD8/HD16 to select the connection type.

- From the main screen, press the [PROJECT/UTILITY] key and then use the cursor left/right keys to bring up the indication "SYSTEM" on the second line of the display.

```
REC UTILITY 4/10  
>SYSTEM
```

- Press the [ENTER] key.

The display indication changes as follows.

```
SYSTEM 1/7  
>FOOT SWITCH
```

- Use the cursor left/right keys to bring up the indication "Control Surface" on the second line of the display, and press the [ENTER] key. The currently selected connection type is shown.

```
Control Surface  
USB
```

(4) Turn the dial to select "USB" (connection via USB port) or "MIDI I/O" (connection via MIDI IN/ OUT connectors). The remote operation signals will be sent via the interface selected here.

(5) Press the [EXIT] key repeatedly to return to the main screen.

**5. Perform the following steps at the HD8/HD16 to activate the control surface mode.**

(1) From the main screen, hold down the [SHIFT] key and press pad 2 (CONTROL SURFACE).

A confirmation screen for switching to control surface mode appears.

(2) Press the [ENTER] key.

The HD8/HD16 switches to control surface mode, and the display indication changes as follows.



**6. Start Cubase LE.**

The startup procedure differs, depending on the operating system.

**Windows XP**

Double-click on the Cubase LE icon that was placed on the desktop during installation. A window appears, asking whether to test the audio I/O ports. Select "Yes" to perform the test.

**MacOS X**

Double-click on the Cubase LE icon that was placed in the "Applications" folder during installation.

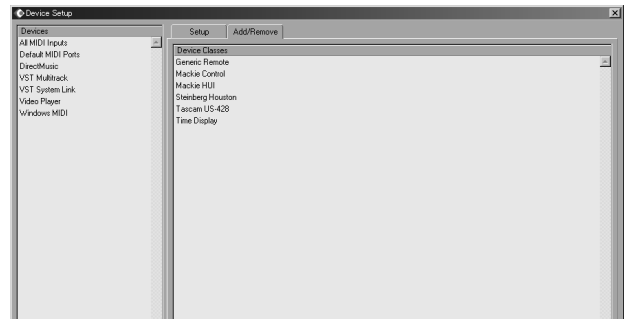
**NOTE**

Be sure to start Cubase LE only after activating the control surface mode at the HD8/HD16.

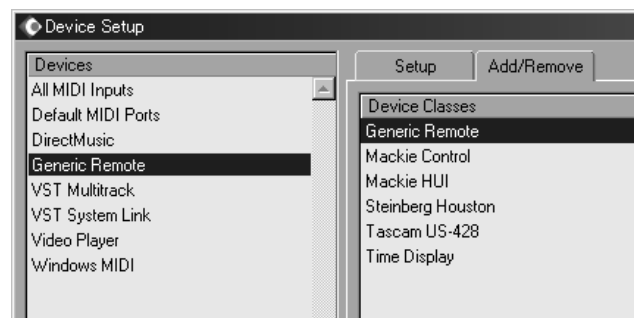
The following steps are the same for Windows XP and MacOS X. The screen examples shown here are from Windows XP.

**7. After starting Cubase LE, select "Device Setup..." from the "Devices" menu, and click the "Add/Remove" tab.**

The device setup window gives access to the settings required for using the connected HD8/HD16 as control surface.



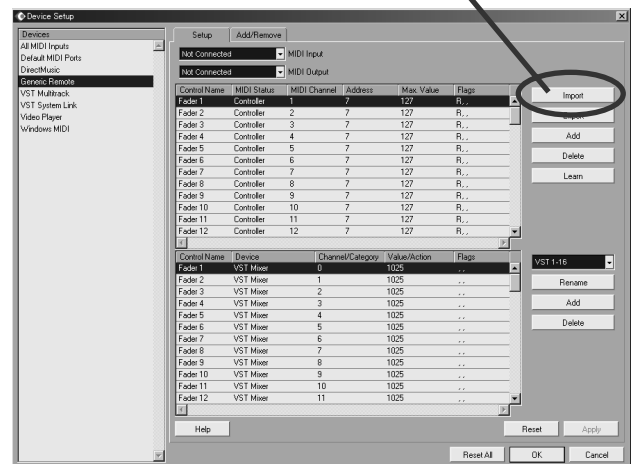
In the right side of the device setup window, select "Generic Remote" and click the "Add" button. This will add the "Generic Remote" entry to the list on the left side of the device setup window.



**8. Select "Generic Remote" in the list on the left side of the device setup window, and click the "Setup" tab.**

The display indication changes as follows.

"Import" button



**9. Click the "Import" button.**

The "Import Generic Remote" window appears.

**10. Remove the "Cubase LE" CD from the CD-ROM drive of the computer and insert the "Factory Recover CD".**

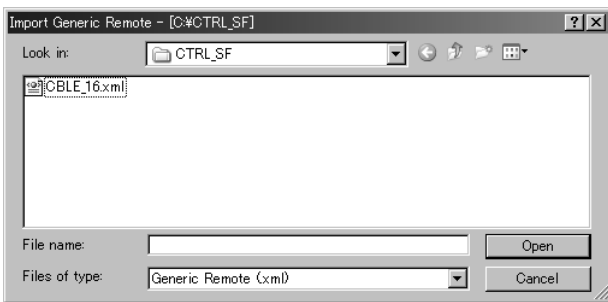
**11.** Use drag & drop to copy the folder "CTRL\_SF" from the "Factory Recover CD" to the hard disk of the computer.

**12.** In the "Import Generic Remote" window, select the setup file located in the "CTRL\_SF" folder copied to the hard disk of the computer. Then click the "Open" button.

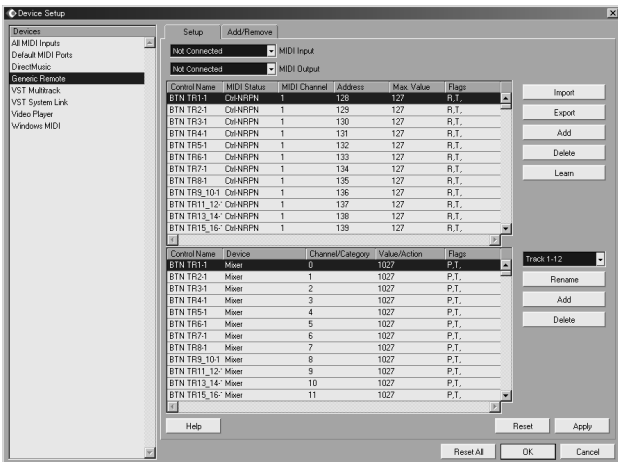
The name of the setup file is as follows.

HD8 setup file: . . . . . CBLE\_8.xml

HD16 setup file: . . . . . CBLE\_16.xml



Click the "Open" button to load the Generic Remote setup file. The contents of the file are reflected in the setup window.



**13.** Use the MIDI input port and MIDI output port pull-down menus of Cubase LE to select the MIDI port to which the HD8/HD16 is connected.

**■ When using USB**

Select MIDI input and output port from the following.

**● Windows**

XP . . . . . "USB"

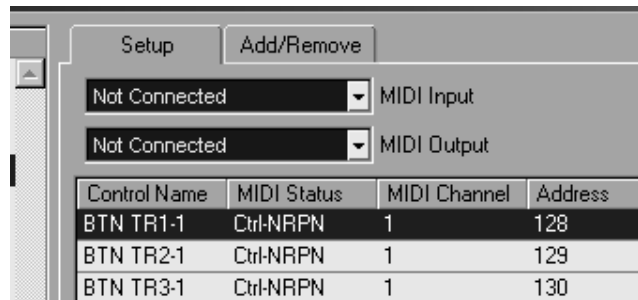
VISTA . . . . . "MIDI"

**● Macintosh**

Mac OS X 10.2 and later. . . . . "MIDI"

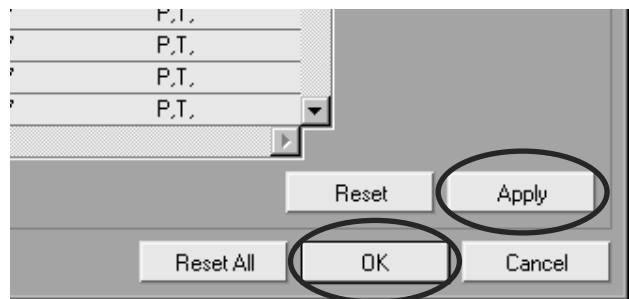
**■ When using MIDI**

Select the corresponding MIDI port of the interface.



**14.** Click the "Apply" button and then click the "OK" button.

The device setup window closes. The HD8/HD16 can now be used to remotely control the Cubase LE application.



**HINT**

The settings are automatically saved by Cubase LE. When you start Cubase LE the next time, the setup procedure is no longer necessary.

**Terminating the control surface mode**

To terminate the control surface mode and return the HD8/HD16 to normal operation, proceed as follows.

**1.** From the main screen, hold down the [SHIFT] key and press pad 2 (CONTROL SURFACE).

The display indication changes as follows.



**2.** Press the [ENTER] key.

The main screen appears again and the HD8/HD16 resumes normal recorder operation.

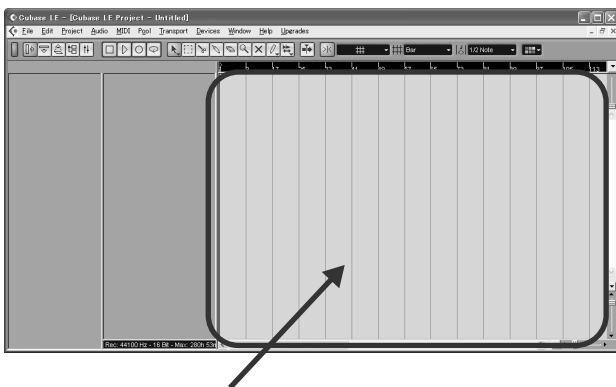
## Quick Guide: Importing audio data into Cubase LE

This section explains how to import audio data of the HD8/HD16 into Cubase LE as WAV files. There are two ways to do this:

- \* Importing by drag & drop
- \* Using the "Import" command

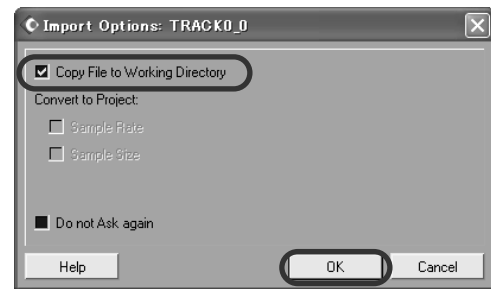
### Importing by drag & drop

- 1.** Connect the computer and the HD8/HD16 with a USB cable.
- 2.** Switch the HD8/HD16 to mass storage mode.  
For information on how to do this, see page 161 of the operation manual.
- 3.** Start Cubase LE and open the project into which to import the audio data.
- 4.** In the window on the computer screen showing the hard disk of the HD8/HD16, open the "TAKE" folder of the project that contains the desired audio data. For information on how to do this, see page 162 of the operation manual.
- 5.** Select the file or files in the "TAKE" folder and drag & drop them onto the Cubase LE project window.



The "Import Options" window appears.

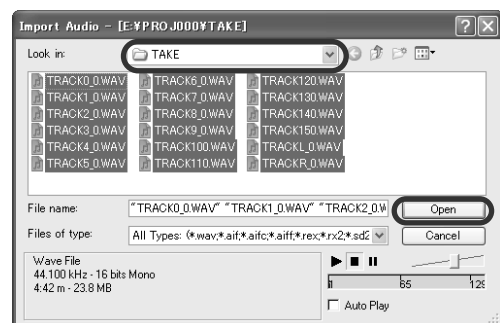
- 6.** In the "Import Options" window, select the "Copy Files to Working Directory" check box, and click the OK button.



The audio data are loaded into Cubase LE tracks.

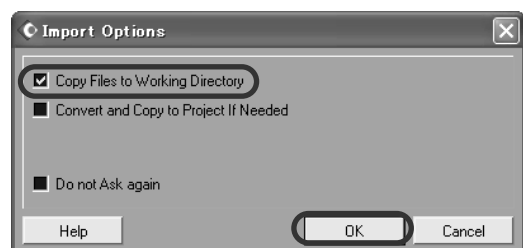
### Using the "Import" command

- 1.** Perform steps 1 - 3 of "Importing by drag & drop" to open the Cubase LE project.
- 2.** From the Cubase LE menus, select "File" → "Import" → "Audio File".  
The "Import Audio" window appears.
- 3.** Select the file or files in the "TAKE" folder of the desired project and click the "Open" button.



The "Import Options" window appears.

- 4.** Select the "Copy File to Working Directory" check box, and click the OK button.



The audio data are loaded into Cubase LE tracks.

## Using the control surface mode

This section describes use of the HD8/HD16 in control surface mode.

### NOTE

The control surface functions described here are available only when the setup file provided by ZOOM has been loaded into Cubase LE.

## About the control surface mode

When you switch the HD8/HD16 to control surface mode, the keys and faders of the HD8/HD16 can be used to remotely control the transport and mixing functions of Cubase LE.

When you switch the HD8/HD16 to control surface mode, the display indication changes as follows.

```
Stat: Mute Bank: 1
PAN
```

### NOTE

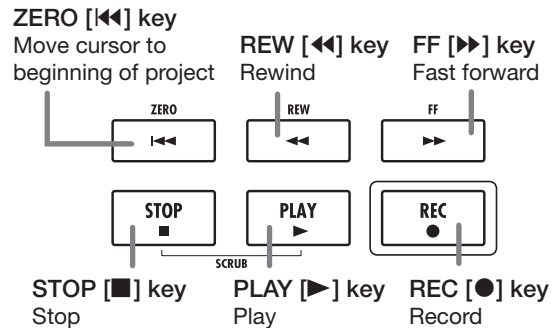
While the HD8/HD16 is in control surface mode, the recorder does not operate.

In control surface mode, the HD8/HD16 recorder functions are not available, and the knobs and keys on the panel have special functions for Cubase LE. The level meter of the HD8/HD16 shows the fader positions for the Cubase LE tracks.

For a list of functions assigned to the keys and knobs of the HD8/HD16 in control surface mode, see the table "Control surface mode functions at a glance" on page 8 of this document.

## Operating the transport

When the HD8/HD16 is in control surface mode, the keys of the transport section control the following Cubase LE functions.



Regarding the functions of other keys in the function/transport section, see the table "Control surface mode functions at a glance" on page 8 of this document.

## Operating the fader section

When the HD8/HD16 is in control surface mode, the controls of the fader section (faders, status keys, parameter knobs) can be used to adjust major parameters of Cubase LE. Regarding the functions of the controls, see the table "Control surface mode functions at a glance" on page 8 of this document.

### NOTE

With the HD8, the [RHYTHM] fader, status key, and parameter knob are also used. With the HD16, all of these are "not assigned".

## Switching banks operated by the fader section

A group of tracks operated by the controls (faders, status keys, parameter knobs) of the fader section is called a "bank". By switching the bank, you can control more tracks of Cubase LE.

With the HD8, there are four banks (1 - 4), and with the HD16 there are three banks (1 - 3). The table on the next page shows the Cubase LE track numbers that are assigned to the controls for each bank.

**Banks available with HD8**

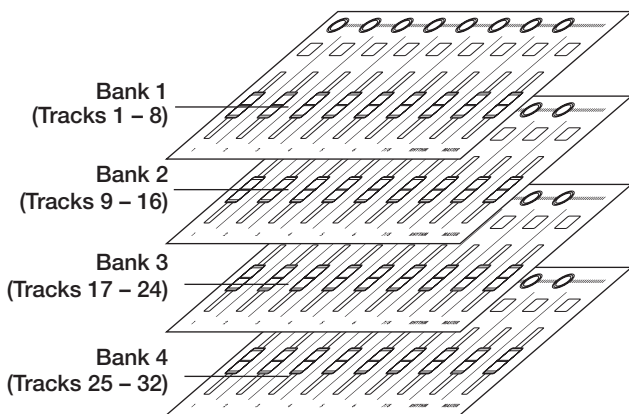
Controls	1	2	3	4	5	6	7/8	[RHYTHM]
Bank 1	Tr. 1	Tr. 2	Tr. 3	Tr. 4	Tr. 5	Tr. 6	Tr. 7	Tr. 8
Bank 2	Tr. 9	Tr. 10	Tr. 11	Tr. 12	Tr. 13	Tr. 14	Tr. 15	Tr. 16
Bank 3	Tr. 17	Tr. 18	Tr. 19	Tr. 20	Tr. 21	Tr. 22	Tr. 23	Tr. 24
Bank 4	Tr. 25	Tr. 26	Tr. 27	Tr. 28	Tr. 29	Tr. 30	Tr. 31	Tr. 32

**Banks available with HD16**

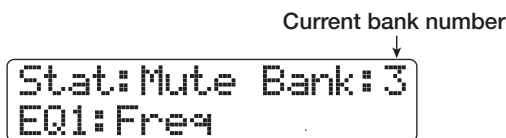
Controls	1	2	3	4	5	6
Bank 1	Tr. 1	Tr. 2	Tr. 3	Tr. 4	Tr. 5	Tr. 6
Bank 2	Tr. 13	Tr. 14	Tr. 15	Tr. 16	Tr. 17	Tr. 18
Bank 3	Tr. 25	Tr. 26	Tr. 27	Tr. 28	Tr. 29	Tr. 30
Controls	7	8	9/10	11/12	13/14	15/16
Bank 1	Tr. 7	Tr. 8	Tr. 9	Tr. 10	Tr. 11	Tr. 12
Bank 2	Tr. 19	Tr. 20	Tr. 21	Tr. 22	Tr. 23	Tr. 24
Bank 3	Tr. 31	Tr. 32	Tr. 33	Tr. 34	Tr. 35	Tr. 36

For example, when bank 1 is selected with the HD8, tracks 1 - 8 of Cubase LE can be controlled. Switching to bank 2 gives access to tracks 9 - 16.

● **How banks are organized (HD8)**



Use the cursor left/right keys to switch between banks. The currently selected bank is indicated on the first line of the display.



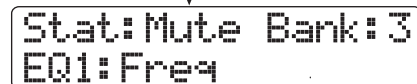
**Selecting a function to control with the status keys**

By using the status keys of the HD8/HD16, Mute, Rec (recording standby), and Solo on/off for the respective track in Cubase LE can be controlled. To select which of these functions is controlled by the status key, proceed as follows.

**1. Use the cursor left/right keys to select the bank that includes the track to control.**

The function currently assigned to the status key (Mute, Rec, Solo) is shown on the left side of the first line of the display.

On/off function assigned to status key



**2. Use the [SELECT] key to select the desired function.**

Each push of the key cycles the status key through the Mute → Rec → Solo function in turn.

**3. Press the status key for the target track to switch the selected function on or off.**

**Selecting a function to control with the parameter knob**

By using the parameter knobs of the HD8/HD16, panning, EQ, and effect send level can be adjusted for each track of Cubase LE. To select which of these functions is controlled by the knob, proceed as follows.

**1. Use the cursor left/right keys to select the bank that includes the track to control.**

The function currently assigned to the parameter knob is shown on the second line of the display.



**2. Press the key corresponding to the parameter to adjust.**

The table on the next page shows the adjustable Cubase LE parameters and the corresponding HD8/HD16 keys. Except for the PAN parameter, you select one of several parameters by pressing the same key repeatedly.

HD8/HD16 key	Display indication	Cubase LE parameter	Parameters accessible through repeated keypresses
[TRACK PARAMETER] key	SEND1 – SEND4	SEND1 – SEND4	SEND1 – 4 On/Off status and level are shown in turn.
[INPUT SOURCE] key	PAN	PAN	--
[BOUNCE] key	EQ1	EQ:LOW	EQ1 OnOff status, Gain, Freq and Q are shown in turn
[SCENE] key	EQ2	EQ:LO MID	EQ1 OnOff status, Gain, Freq and Q are shown in turn
[AUTO PUNCH IN/OUT] key	EQ3	EQ:HI MID	EQ1 OnOff status, Gain, Freq, and Q are shown in turn
[A-B REPEAT] key	EQ4	EQ:HI	EQ1 OnOff status, Gain, Freq, and Q are shown in turn

For example, pressing the [TRACK PARAMETER] key repeatedly cycles through the following parameters for control: SEND1: OnOff → SEND1: Level → SEND2: OnOff → SEND2: Level.

- Turn the parameter knob for the target track to adjust the parameter.

## Using the pads

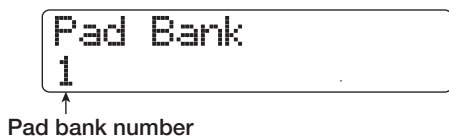
Also while the HD8/HD16 is in control surface mode, the pad playing information is output as MIDI messages. In control surface mode of the HD8/HD16, the following pad settings are possible.

### Switching the pad bank

When you switch the pad bank in control surface mode, the set of note numbers assigned to each bank changes. (For information on MIDI note numbers for each pad, see page 205 of the Operation Manual.)

- Hold down the [SHIFT] key and press pad 5 (CHORUS/DELAY).

The display indication changes as follows.



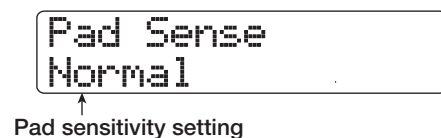
- Turn the dial to select the pad bank (1 - 3).  
When the setting is complete, press the [EXIT] key.

### Changing the pad sensitivity

You can adjust the volume that is produced according to the force with which you hit the pads (pad sensitivity).

- Hold down the [SHIFT] key and press pad 1 (CD-R/RW).

The display indication changes as follows.



For information on available settings, see page 125 of the Operation Manual.

- Turn the dial to select the pad sensitivity settings.

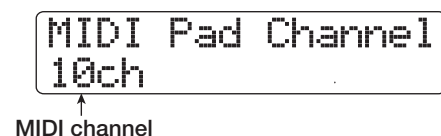
When the setting is complete, press the [EXIT] key to return to the previous screen.

### Setting the MIDI channel

To set the channel for sending MIDI messages, proceed as follows.

- Hold down the [SHIFT] key and press pad 6 (REVERB).

The display indication changes as follows.



- Turn the dial to select the MIDI channel (1 - 16).

When the setting is complete, press the [EXIT] key to return to the previous screen.

## Control surface mode functions at a glance

### NOTE

The control surface functions listed here are available only when the setup file provided by ZOOM has been loaded into Cubase LE.

	Control	Description	
Fader section	Parameter knob	Adjusts panning, EQ, and effect send level for respective track	
	Parameter knob [RHYTHM]	HD8: Adjusts panning, EQ, and effect send level for respective track HD16: Not assigned	
	Status key	Switch Mute, Rec, Solo on/off for respective track	
	Status key [RHYTHM]	HD8: Switch Mute, Rec, Solo on/off for respective track HD16: Not assigned	
	Status key [MASTER]	Not assigned	
	Fader	Adjust volume of respective track	
	Fader [RHYTHM]	HD8: Adjust volume of respective track HD16: Not assigned	
	Fader [MASTER]	Adjust master volume	
Function/transport section	[SELECT] key	Switch status key target	
	[SOLO] key	Open/close mixer	
	Cursor left/right keys	Switch fader section banks (HD8: 4 banks, HD16: 3 banks)	
	Cursor up key	Navigate up	
	Cursor down key	Navigate down	
	[ENTER] key	Move project window to foreground	
	Dial	Move the project cursor position	
	ZERO [◀◀] key	Return to zero the project cursor position	
	REW [◀] key	Rewind	
	FF [▶▶] key	Fast forward	
	STOP [■] key	Stop	
	PLAY [▶] key	Play	
	REC [●] key	Record	
Control section	[NEW PROJECT] key	Switch cycle mode on/off	
	[PROJECT/UTILITY] key	Switch monitoring on/off	
	[TRACK PARAMETER] key	Select SEND as parameter knob target	
	[INPUT SOURCE] key	Select PAN as parameter knob target	
	[BOUNCE] key	Select EQ1 as parameter knob target	
	[SCENE] key	Select EQ2 as parameter knob target	
	[AUTO PUNCH IN/OUT] key	Select EQ3 as parameter knob target	
	[A-B REPEAT] key	Select EQ4 as parameter knob target	
	[CLEAR] key	Open VST channel settings window	
	MARKER [◀◀] / [▶▶] keys	Move cursor to marked position, PI/PO point, or project start	
[MARK] key	Mark current cursor position.		
Pad section	Pads 1 – 9	Send playing information as MIDI messages	
	[CD-R/RW] key	+ [SHIFT] key	Show HD8/HD16 pad sensitivity adjustment screen
	[CONTROL SURFACE] key		Terminate control surface mode
	[USB] key		Enable/disable mass storage mode
	[CHORUS/DELAY] key		Show HD8/HD16 pad bank switching screen
	[REVERB] key		Show HD8/HD16 MIDI channel selection screen