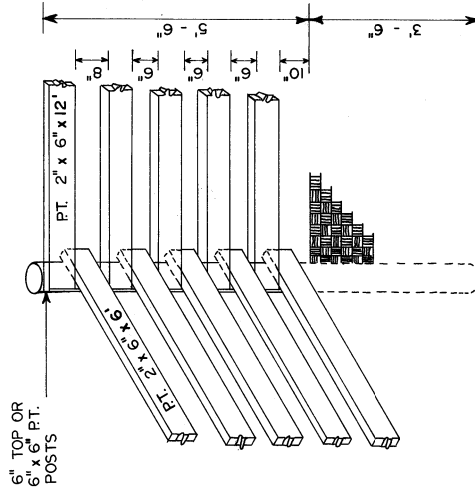
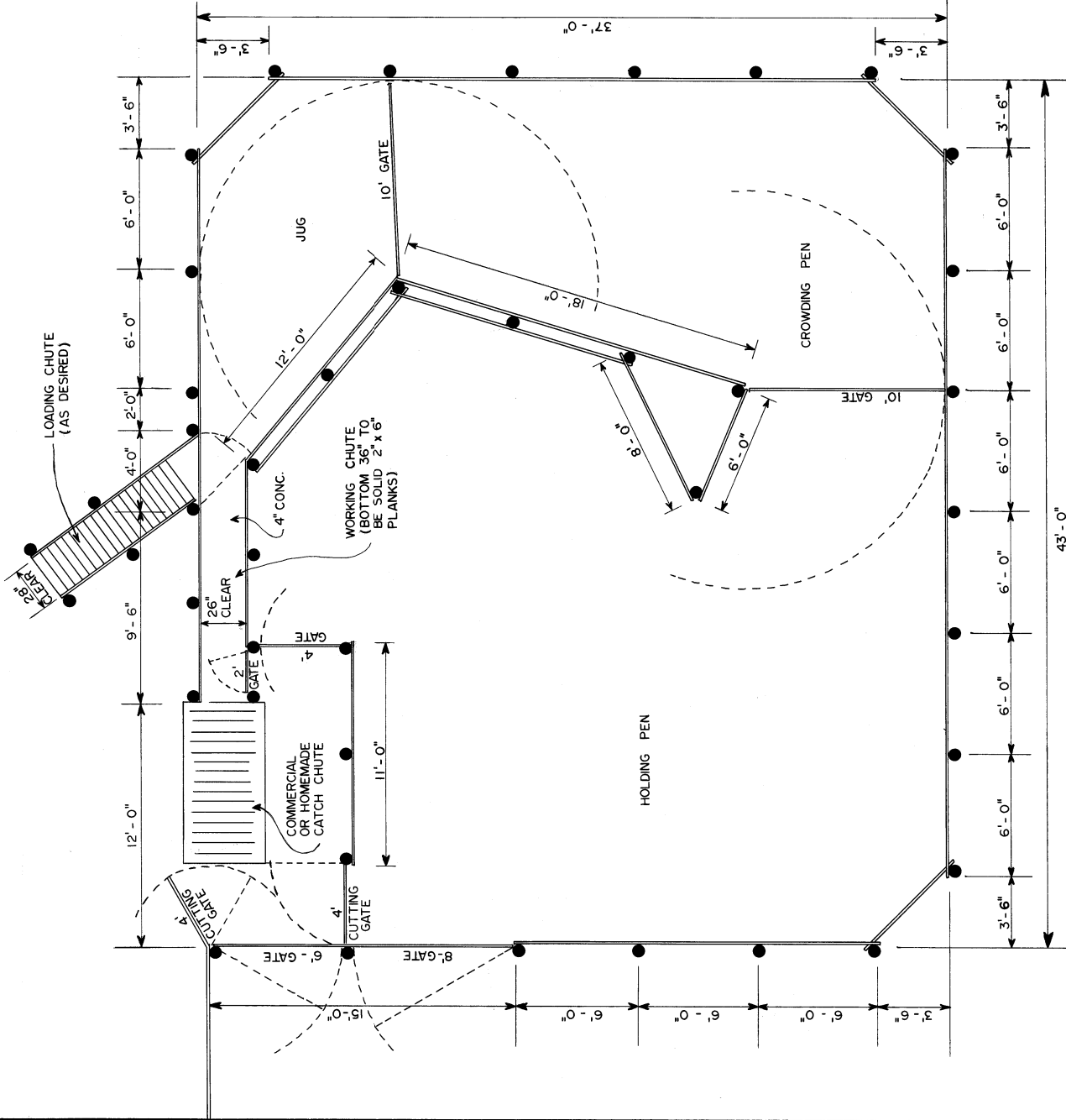


NOTES:

1. THIS CORRAL HAS THE BASIC PARTS, PENS, WORKING CHUTE, HEADGATE, AND LOADING CHUTE NEEDED FOR HANDLING THE SMALL (25 - 30 HEAD) HERD.
2. GOOD WORKING FACILITIES WILL SAVE TIME, AVOID INJURY TO WORKERS AND CATTLE, AND MAKE TREATMENT, SORTING, WEIGHING, DEHORNING, ETC. AN EASIER CHORE.
3. LOCATE CORRAL ON WELL DRAINED SITE CONVENIENT TO LOTS AND ACCESSIBLE TO TRUCKS AND TRAILERS.
4. USE PRESSURE TREATED 2-INCH LUMBER FASTENED WITH BOLTS OR DEFORMED NAILS.
5. SPACE 5'-6" TOP PRESSURE TREATED POSTS, 6' CENTER TO CENTER, UNLESS OTHERWISE NOTED.
6. SET GATE AND WORKING CHUTE POSTS IN CONCRETE OR BRACE OVERHEAD TO PREVENT SAGGING.



CORNER FENCING DETAIL

43'-0"

PLAN

COOPERATIVE EXTENSION WORK IN
 AGRICULTURE AND HOME ECONOMICS
 STATE OF TENNESSEE
 UNIVERSITY OF TENNESSEE
 AGRICULTURAL ENGINEERING DEPARTMENT
 UNITED STATES DEPARTMENT OF AGRICULTURE COOPERATING

TENNESSEE CORRAL

TENN / JYM / 12-3-84 / SHEET 1 OF 1
 GFG / JYM / PLAN NO. T4113