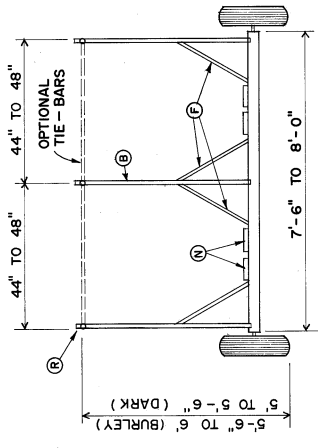
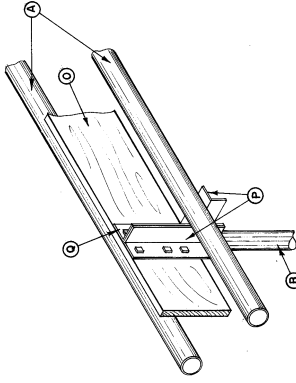


FRONT VIEW

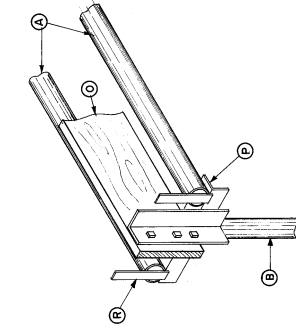


REAR VIEW

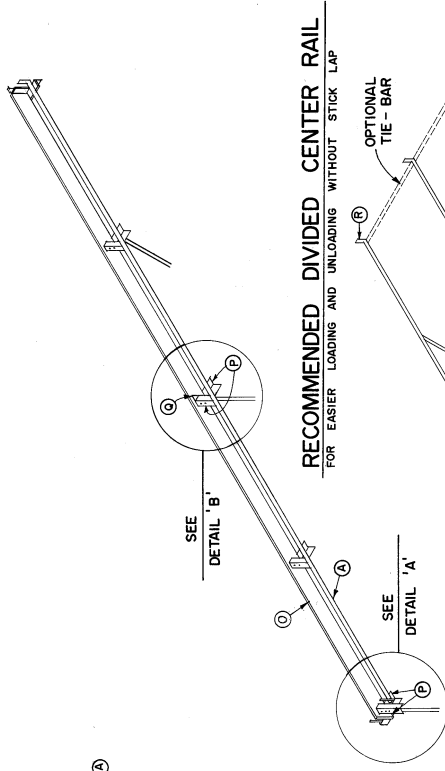
SIDE VIEW



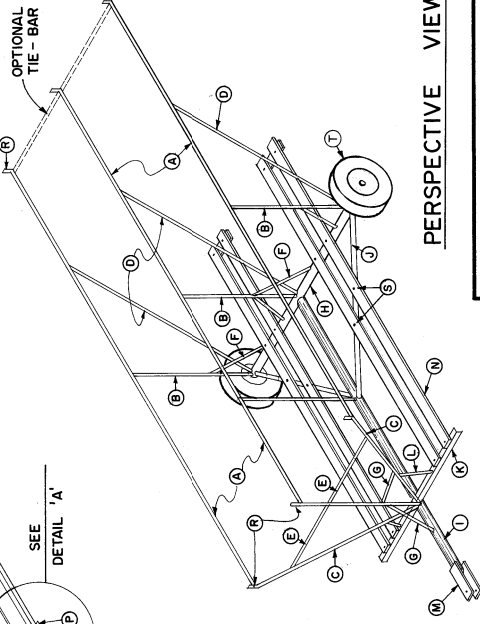
DETAIL A



DETAIL B



RECOMMENDED DIVIDED CENTER RAIL  
FOR EASIER LOADING AND UNLOADING WITHOUT STICK LAP



PERSPECTIVE VIEW

ITEM	SIZE	LENGTH	QUANTITY
(A) Rails	2" Dia. Pipe	21'	3, or 4 each
(B) Posts (Vertical)	4" to 4 1/2" Dia. Pipe	4' to 4 1/2"	4, or 5 each
(C) Posts (Slanted)	5 1/2" to 6"	5 1/2" to 6"	2 each
(D) Braces, Rear	7" to 7 1/2"	7" to 7 1/2"	3 each
(E) Braces, Front Horizontal	2" Dia. Pipe	2"	2 each
(F) Braces, Rear Post	2" Dia. Pipe	2 1/2"	4 each
(G) Braces, Front Post	2" Dia. Pipe	3"	2 each
(H) Axle	4" Dia. Pipe or 4" Box Channel	7 1/2" to 8"	1 each
(I) Tongue	4" Dia. Pipe or 4" Box Channel	14"	1 each
(J) Braces, Axle	2" Dia. Pipe or equal angle	6"	2 each
(K) Board Support	3/16" x 2" x 2" Angle or Equal	5 1/2"	1 each
(L) Brace, Board Support	2" Dia. Pipe or Equal Angle	10" to 12"	2 each
(M) Hitch Straps	1/2" x 2 1/2", with 3/4" Hole	12"	2 each
(N) Boards for Standing	2" x 6" Oak or Equal	14"	4 each
(O) Board for Divider	1" x 6" Oak or Equal	10'	2 each
(P) Brackets, Board Support	1/8" x 1 1/2" x 1 1/2" Angle or Equal	8"	10 each
(Q) Brackets, Board Splice	1/8" x 1 1/2" x 1 1/2" Angle or Equal	5"	1 each
(R) Strap, Stick Stop	1/8" x 1" or Equal	4"	6, or 8 each
(S) Bolts	3/8" Machine	1 1/2" and 2 1/2"	As Required
(T) Wheels, Tires, and Housing	Salvage from Vehicles (Suitable for Welding to Axle)		

COOPERATIVE EXTENSION WORK IN  
AGRICULTURE AND HOME ECONOMICS  
STATE OF TENNESSEE  
UNIVERSITY OF TENNESSEE  
AGRICULTURAL ENGINEERING DEPARTMENT  
KIMMEL HALL  
KENTON, TENN.

TWO WHEEL PIPE FRAME  
TOBACCO HAULING TRAILER

TENN. APR. 78 SHEET 1 OF 1  
PLAN NO. T4038

THIS PLAN IS BASED ON  
UNIVERSITY OF KENTUCKY  
PLAN NO. KY. II. 735-50