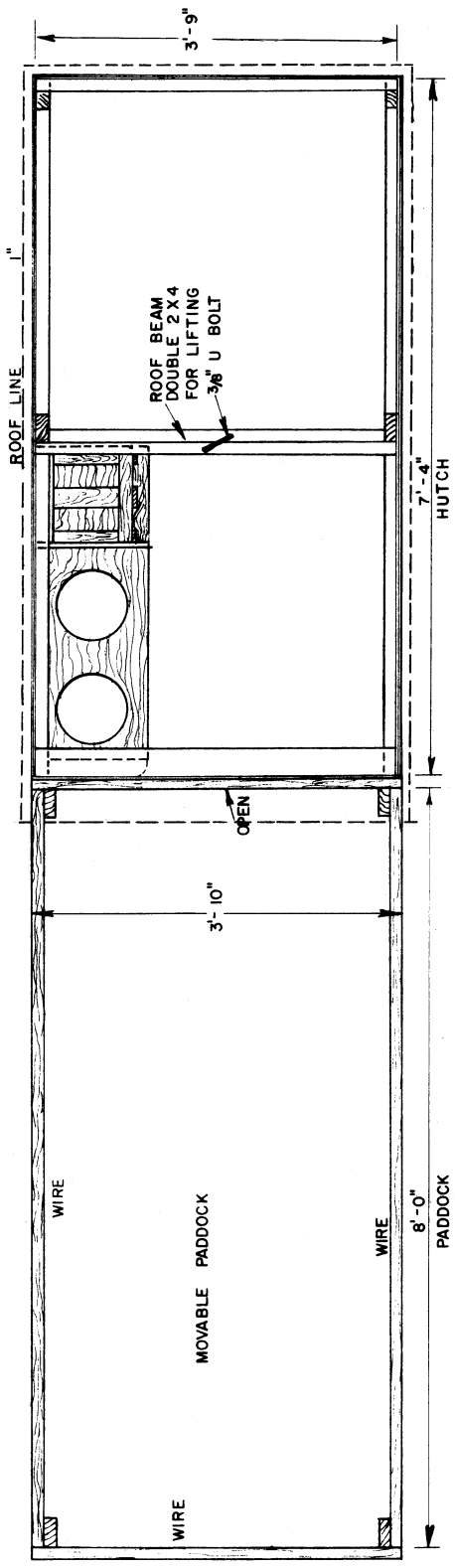
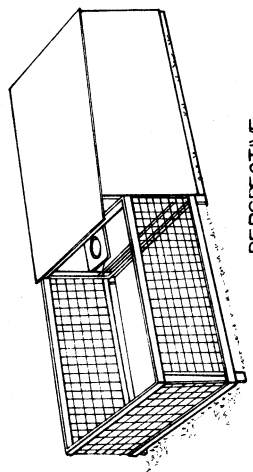


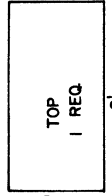
FRONT VIEW
3'-9"
4'-0"
BRACE
12"
1'-2"
3'-6"
WOVEN WIRE
PADDOCK
HAY RACK
OPEN END
CLOSED END
1-6" X 2-0" HINGED DROP DOOR FOR ACCESS
2 X 2
2 X 4
PR TREATED 2 X 4 BASE



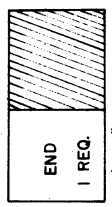
TOP VIEW
8'-0"
3'-10"
OPEN
7'-4" HUTCH
ROOF LINE
1"
3'-9"
ROOF BEAM DOUBLE 2 X 4 FOR LIFTING 3/8" U BOLT



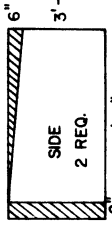
PERSPECTIVE



TOP
1 REQ.
8'



END
1 REQ.
3'-10"



SIDE
2 REQ.
7'-4"
6"
3'-6"
8"

4 SHEETS 3/4" EXT. PLYWOOD (C-DX GRADE)



NOTE:
CONSULT LOCAL HEALTH AND BUILDING CODE
AUTHORITIES BEFORE STARTING CONSTRUCTION

BASED ON: PENN STATE UNIV. PLAN NO.723-214

COOPERATIVE EXTENSION WORK IN
AGRICULTURE AND HOME ECONOMICS
STATE OF TENNESSEE
UNIVERSITY OF TENNESSEE
AND
UNITED STATES DEPARTMENT OF AGRICULTURE COOPERATING

CALF HUTCH WITH
MOVABLE PADDOCK

PA. '78 6301 SHEET 1 OF 1