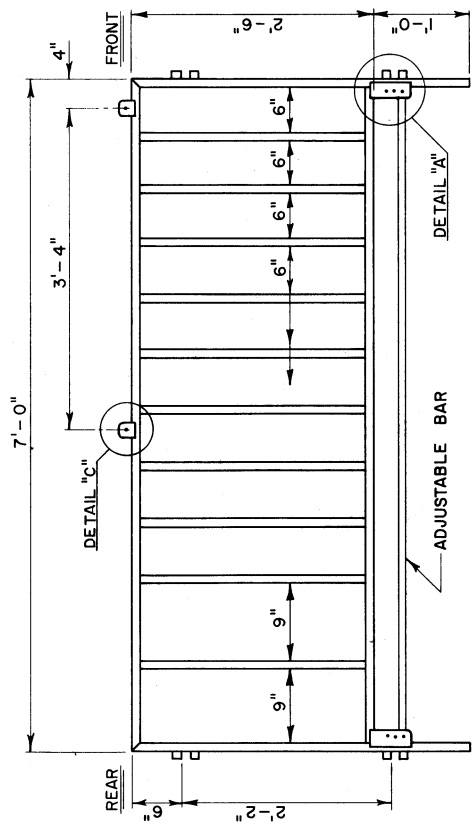


DETAIL "B"

DETAIL "A"

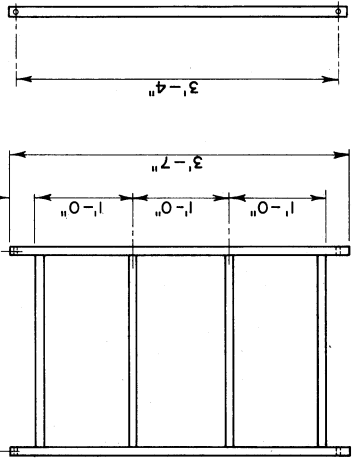
HINGE PIN

TOP PANEL (OPTIONAL)



WELD ANGLE TO PANEL AS SHOWN TO FASTEN CRATE TO FLOOR

SIDE PANEL



BILL OF MATERIAL (Per Crate)	
ITEM	REQ'D
1" x 16 Ga. Sq. Tubing	160'
1/8" x 2" Flat Bar	5'
16 Ga. Sheet Steel	2' x 3'
1/2" Dia. Pipe	3'
3/8" Dia. Round Bar	12'
3/8" Dia. Clevis Pin	8

COOPERATIVE EXTENSION WORK IN
 AGRICULTURE AND HOME ECONOMICS
 STATE OF TENNESSEE
 UNIVERSITY OF TENNESSEE
 UNITED STATES DEPARTMENT OF AGRICULTURE COOPERATING

**FARROWING CRATE
 KNOCK DOWN TYPE**

OK. '76 **6243** SHEET 1 OF 1

BASED ON: OKLA. STATE UNIV.
 PLAN NO. OK-726-23

NOTE: Unless Otherwise Noted All Material Used is
 1" Square Steel Tubing