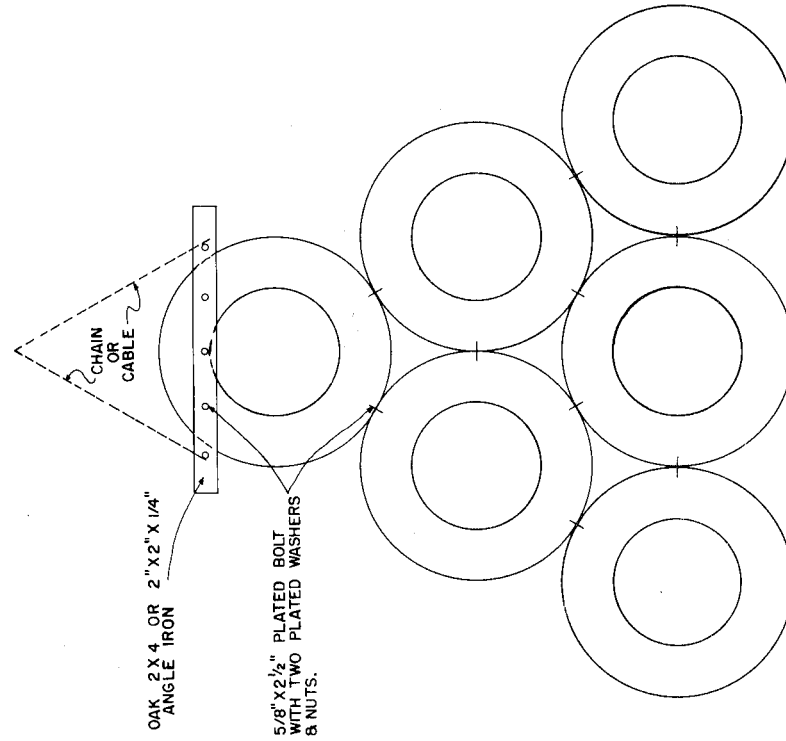


PLAN NO. 1

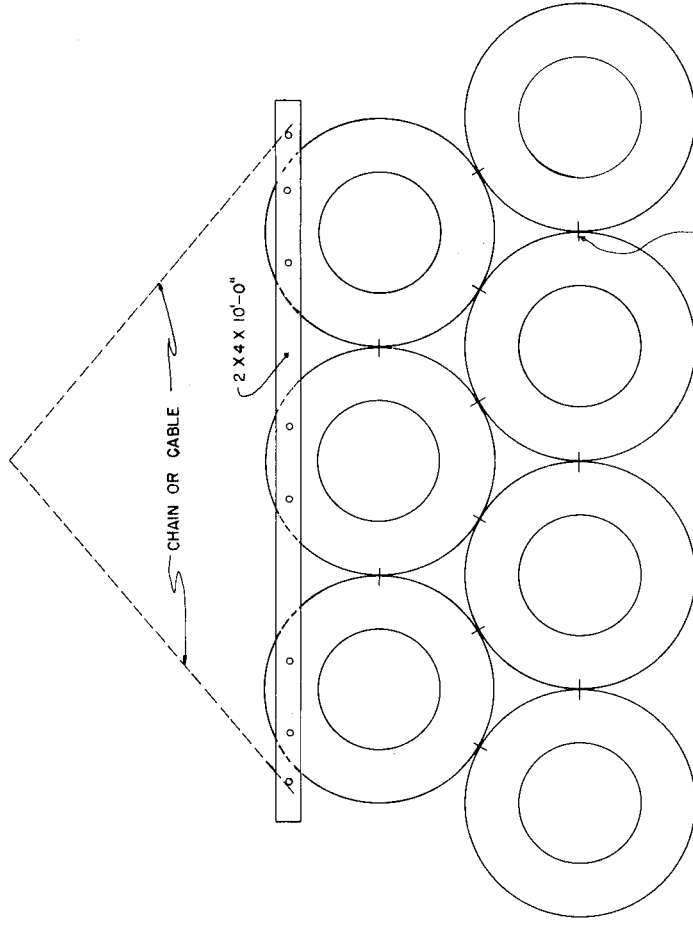


OAK 2 X 4 OR 2" X 2" X 1/4" ANGLE IRON

5/8" X 2 1/2" PLATED BOLT WITH TWO PLATED WASHERS & NUTS.

- MATERIALS:**
- 6 - TIRES - PREFERABLY TRUCK TYPE (610.00).
 - 1 - OAK 2 X 4 OR 2" X 2" X 1/4" ANGLE IRON.
 - 14 - 5/8" X 2 1/2" X 3" PLATED BOLTS.
 - 28 - LARGE PLATED WASHERS.

PLAN NO. 2



5/8" X 2 1/2" PLATED BOLT WITH TWO PLATED WASHERS & NUTS (TYPICAL).

- MATERIALS:**
- 7 - TIRES - PREFERABLY TRUCK TYPE (900-20 OR 825-20).
 - 1 - TREATED 2 X 4.
 - 19 - 5/8" X 2 1/2" X 3" PLATED BOLTS.
 - 38 - LARGE PLATED WASHERS.

BASED ON: AUBURN UNIV. PLAN NO. G-408



COOPERATIVE EXTENSION WORK IN AGRICULTURE AND HOME ECONOMICS STATE OF TENNESSEE UNIVERSITY OF TENNESSEE AGRICULTURAL ENGINEERING DEPARTMENT UNITED STATES DEPARTMENT OF AGRICULTURE COOPERATING			
PASTURE DRAG			
ALA.	'75	6212	SHEET 1 OF 1