

PLAN

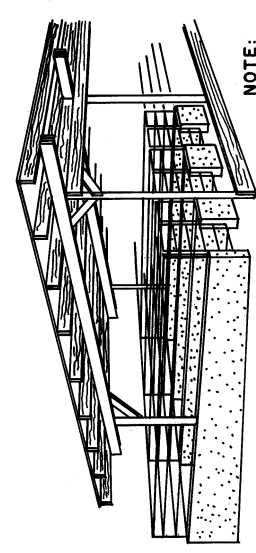


CUTTING LIST

- A 4" TOP x 12'-0" POLES PRESSURE TREATED.
- B 4" TOP x 10'-0" POLES PRESSURE TREATED.
- C 2x6x16'-0"
- D 2x6x16'-0" ON END BAYS
- E 2x6x14'-0" ON INTERMEDIATE BAYS.
- F 16'-0"x26" CORR. METAL.
- G 2x6x4'-0"
- H 1/2"x9" BOLTS

COOPERATIVE EXTENSION WORK IN  
 AGRICULTURE AND HOME ECONOMICS  
 STATE OF TENNESSEE  
 UNIVERSITY OF TENNESSEE  
 UNITED STATES DEPARTMENT OF AGRICULTURE COOPERATING

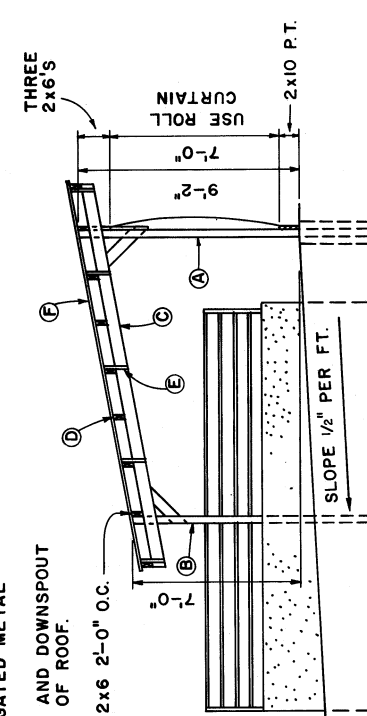
HOG HOUSE FOR BOARS  
 MISS. '75 6207 SHEET 1 OF 2



PERSPECTIVE

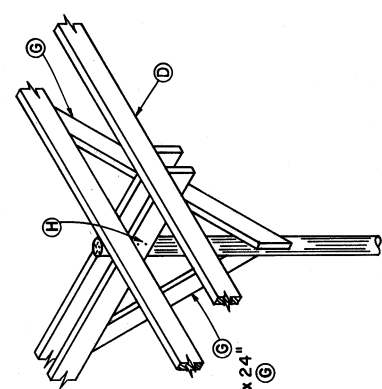
NOTE:  
 CURTAIN NOT SHOWN.  
 GUTTER & DOWNSPOUT  
 NOT SHOWN.

NOTES:  
 BOARD TYPE INSULATION TO BE  
 APPLIED TO RAFTERS BEFORE  
 PLACING CORRUGATED METAL  
 ROOFING.  
 METAL GUTTER AND DOWNSPOUT  
 ON SOUTH SIDE OF ROOF.



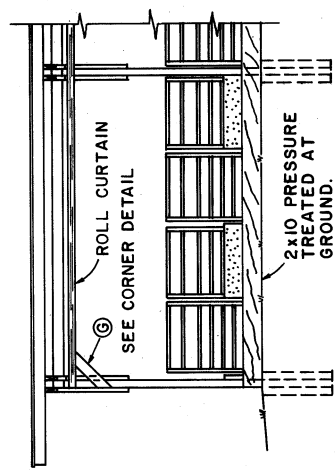
SIDE ELEVATION

NOTE:  
 FOOTINGS TO BEAR ON  
 FIRM BASE BELOW  
 FROST LINE.



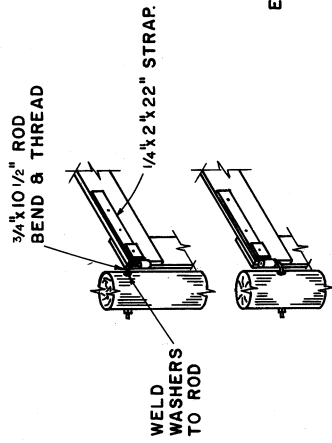
CORNER DETAIL  
 NOT TO SCALE

CUT TWO 2x6x24"  
 BLOCKS FROM (C)

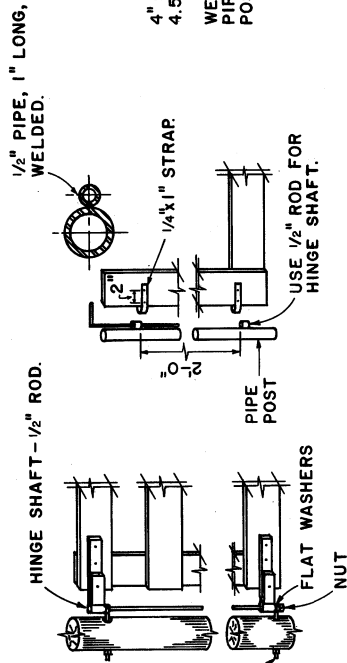


FRONT ELEVATION

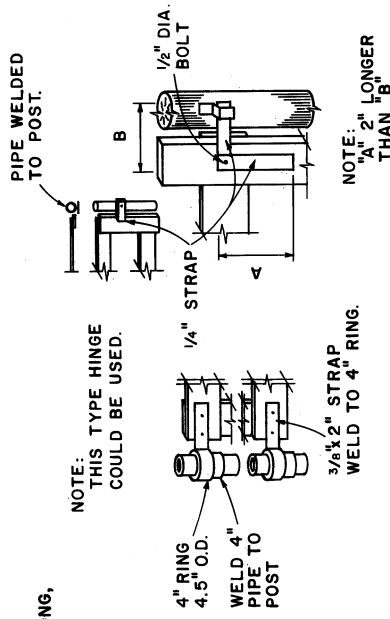
SCALE  
 12" 0' 1' 2' 3' 4'  
 UNLESS  
 OTHERWISE NOTED



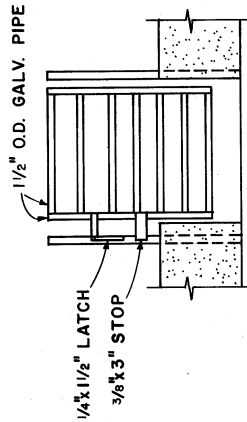
NOTE:  
IF STEEL PIPE IS USED,  
USE HEAVY STRAP WITH  
3/4" DIA. L PIN WELDED  
TO POST.



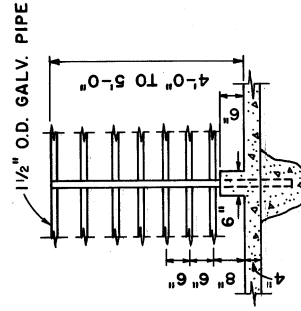
HINGES  
NOT TO SCALE



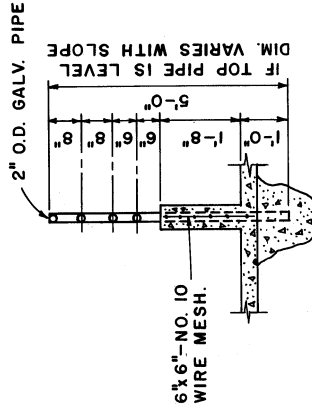
NOTE:  
THIS TYPE HINGE COULD BE USED.



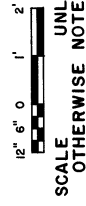
GATE DETAIL



SECTION "A-A"



SECTION "B-B"



NOTE:  
CONSULT LOCAL HEALTH AND BUILDING CODE  
AUTHORITIES BEFORE STARTING CONSTRUCTION.

COOPERATIVE EXTENSION WORK IN  
AGRICULTURE AND HOME ECONOMICS  
STATE OF TENNESSEE  
UNIVERSITY OF TENNESSEE  
AND  
UNITED STATES DEPARTMENT OF AGRICULTURE COOPERATING

HOG HOUSE FOR BOARS

MISS. '75

6207

SHEET 2 OF 2