

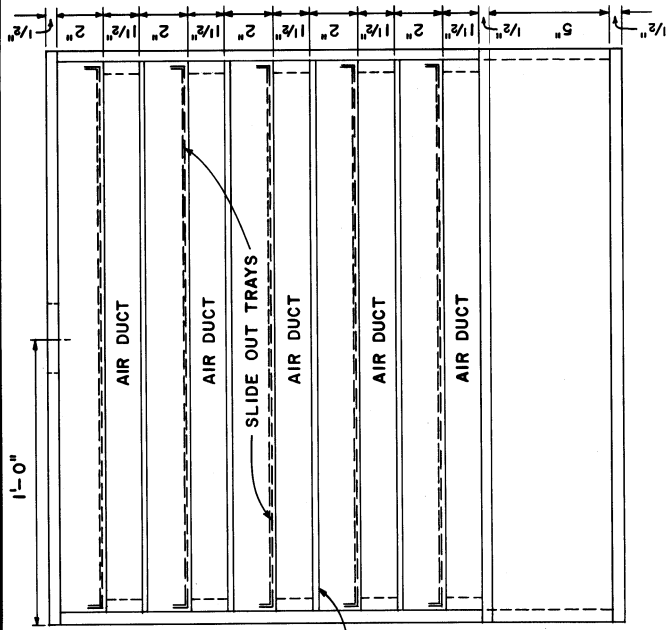
SUGGESTION:
INSTALL ALL WIRING BEFORE
INSTALLING AIR DUCTS.

DEVELOPED BY THE FRUIT SUBSTATION,
CLARKSVILLE, AND THE AGRICULTURAL
ENGINEERING DEPARTMENT, UNIVERSITY
OF ARKANSAS, PLAN NO. 731001

COOPERATIVE EXTENSION WORK IN
AGRICULTURE AND HOME ECONOMICS
STATE OF TENNESSEE
UNIVERSITY OF TENNESSEE
AND
UNITED STATES DEPARTMENT OF AGRICULTURE COOPERATING

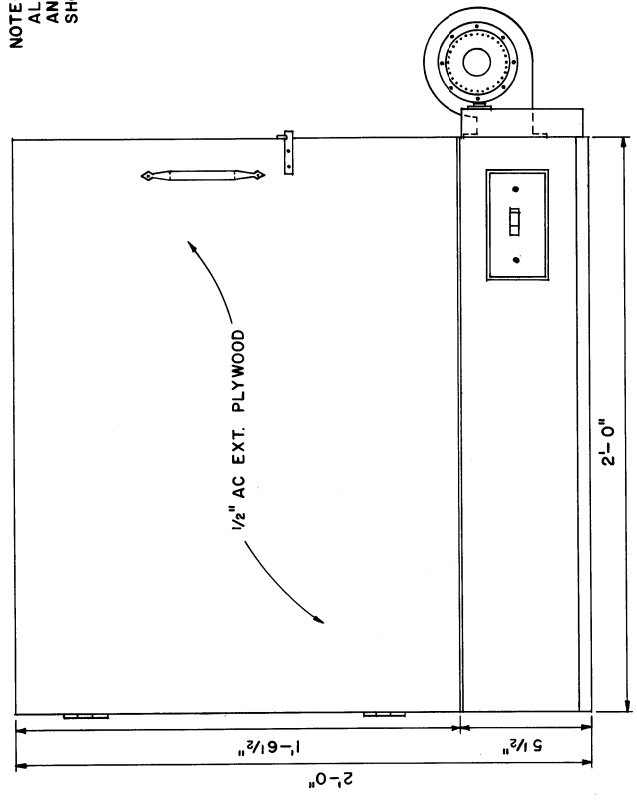
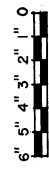
FRUIT DRIER

ARK. '74 6202 SHEET 1 OF 4



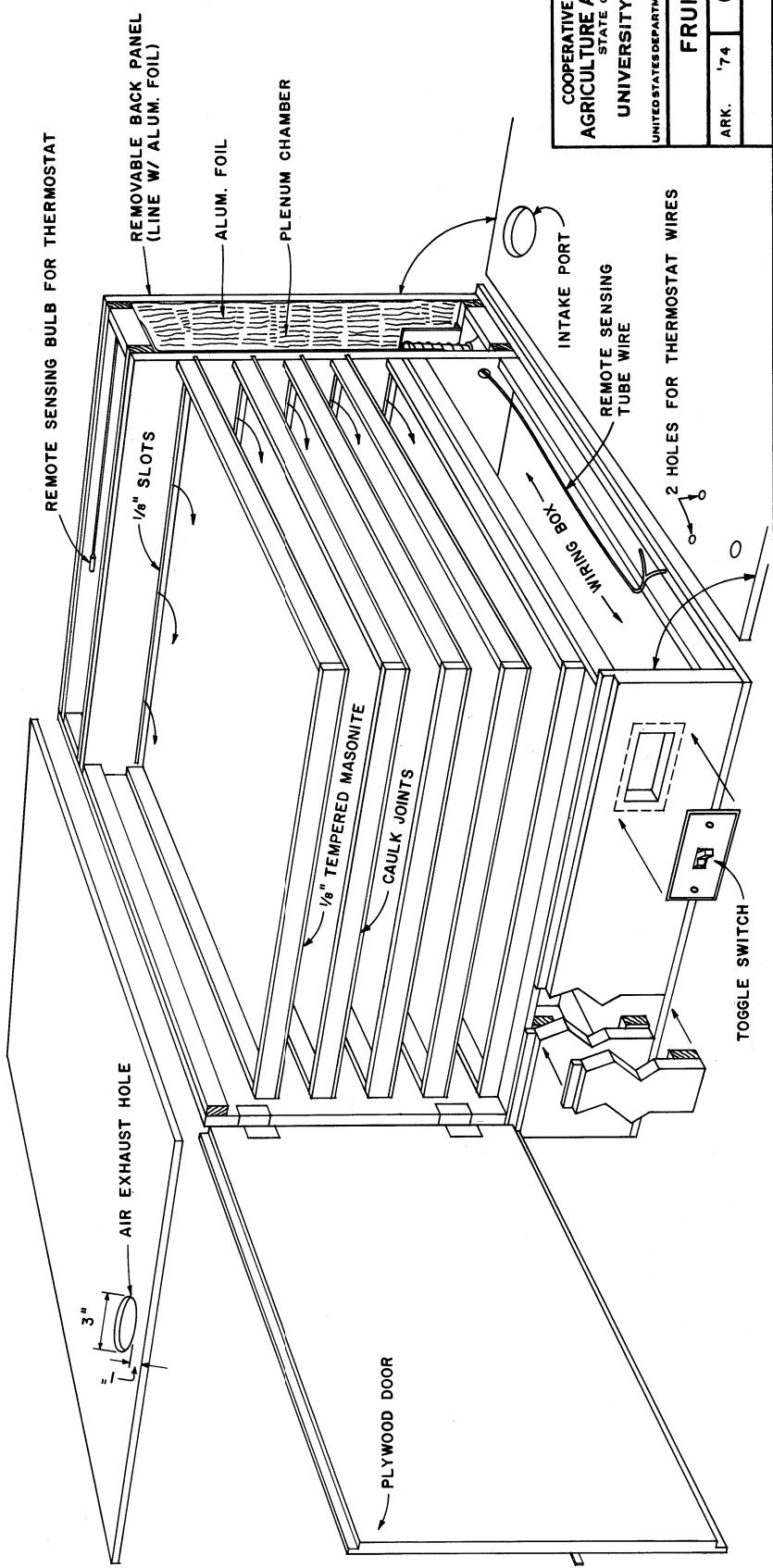
NOTE:
ALL JOINTS IN AIR DUCTS
AND PLENUM CHAMBER
SHOULD BE CAULKED.

1/8" TEMPERED
MASONITE
(CAULK JOINTS)



FRONT - "DOOR REMOVED"

FRONT VIEW



FRUIT DRYING PROCEDURE

APPLES:

- PEEL, CORE, & SLICE IN 1/4" RINGS
- DIP FRUIT IN BLEACHING SOLUTION* FOR 2 MINUTES.
- PLACE PREPARED FRUIT IN LARGE PLASTIC BAG, SEAL, & REFRIG. OVER-NIGHT FOR BEST RESULTS.
- PLACE FRUIT EVENLY IN TRAYS, & PLACE TRAYS IN DRIER.
- SET THERMOSTAT AT 165°
- DRY TO 15-20% MOISTURE W.B.
- APPX. TIME REQ. TEMP. OUTSIDE AIR

(HRS.)	(°F)
10-11	60
9-10	70
7-8	80

PEACHES:

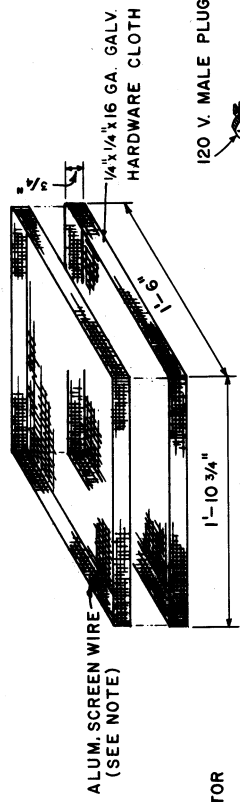
- PEEL, PIT, & SLICE INTO 1/4 SECTIONS
- D, AS ABOVE
- SET THERMOSTAT AT 145°
- DRY TO 15-20% MOISTURE W.B.
- APPX. TIME REQ. TEMP. OUTSIDE AIR

(HRS.)	(°F)
12-13	60
11-12	70
11-12	80

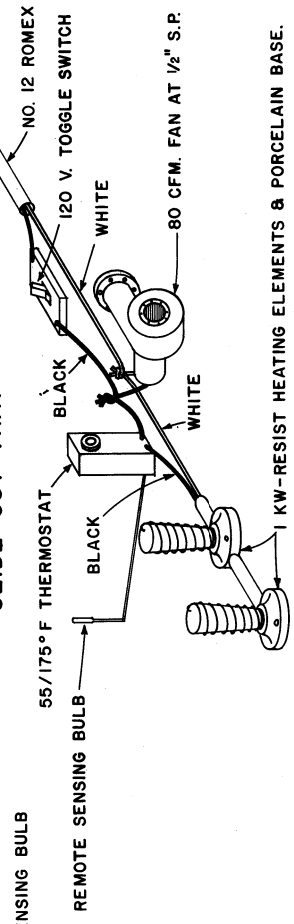
*FOR BLEACHING AGENT USE:
3 LEVEL TEASPOONS OF 60% SODIUM BISULFITE PER QT. OF WATER.

BILL OF MATERIALS

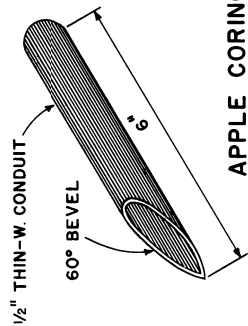
- 1-4 1/2 x 1/2" AC EXT. PLYWOOD
- 1-4 1/2 x 1/8" TEMPERED MASONITE
- 1-4 1/2 x 1/8" GA. - 1/4" GALV. HARDWARE CLOTH
- 6-1 1/2 x 1/8" NO. 1 FIR
- 1/2" - 4d BOX NAILS
- 12-NO. 10 WOOD SCREWS
- 1-SET 1 1/2" HINGES & DOOR HANDLE
- 2-1 KW-110 V. CONE TYPE HEATING ELEMENTS
- 2-110 V. SURFACE MT. PORCEL. LIGHT SOCKETS
- 1-110 V. 2870 RPM DAYTON MOD. #2C781 FAN W/ MOTOR
- 1-110 V. SINGLE POLE SWITCH & COVER
- 1-ELECT. SWITCH BOX
- 1-ELECT. JUNCTION BOX
- 1-55/175° F THERMOSTAT W/ REMOTE SENSING BULB
- 2-HEAT SHIELDS 16 GA. 4" x 5"
- 1-4 x 5' ALUM. SCREEN WIRE



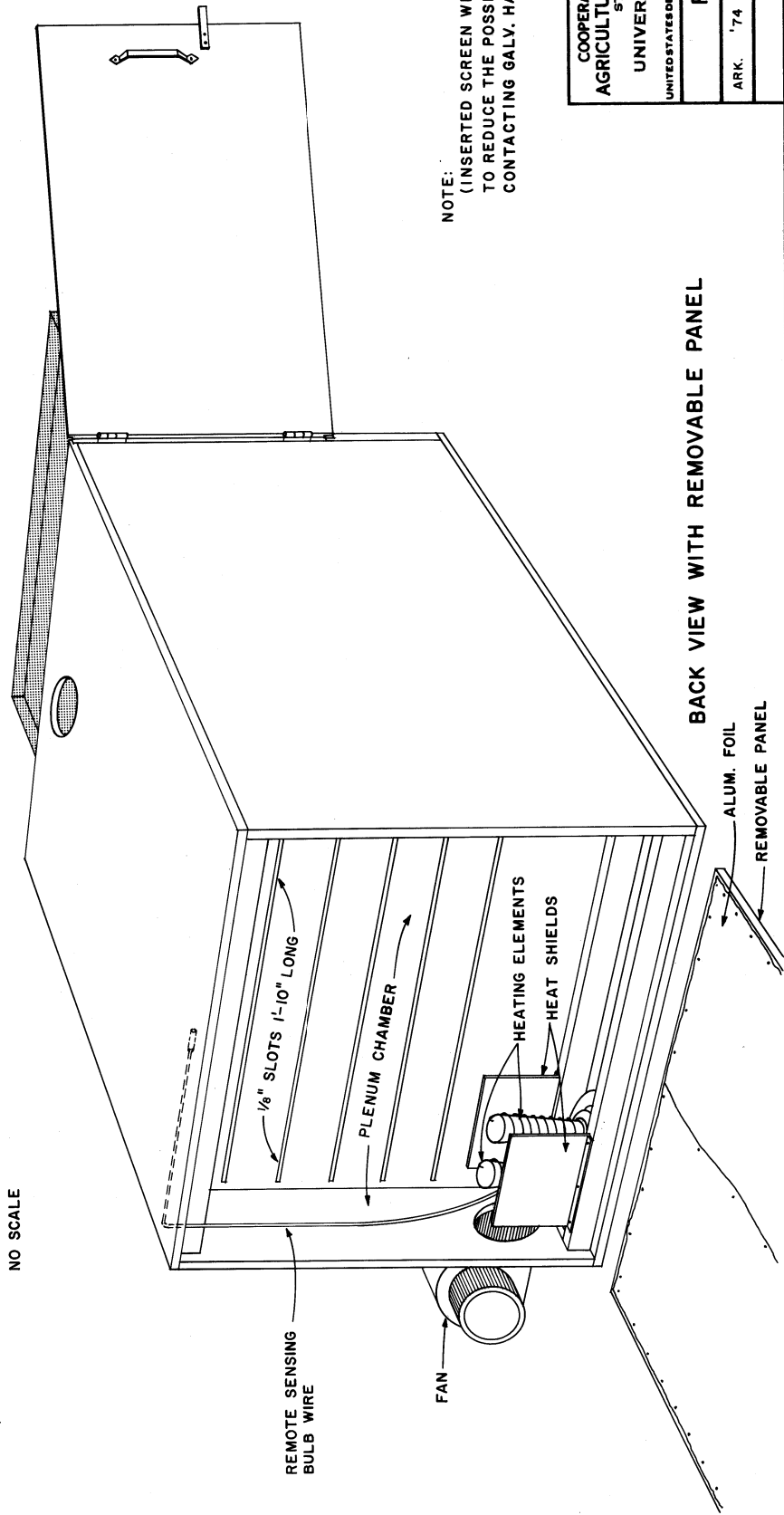
SLIDE-OUT TRAY



WIRING DIAGRAM
NOTE: CIRCUIT: 120 V.-20 A. MIN.



APPLE CORING TOOL
NO SCALE



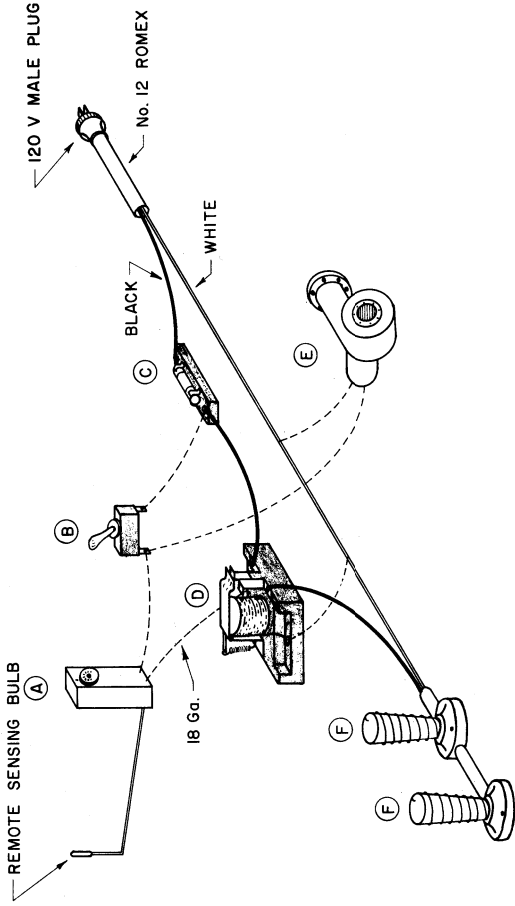
BACK VIEW WITH REMOVABLE PANEL

NOTE:
(INSERTED SCREEN WIRE LINING IS SUGGESTED TO REDUCE THE POSSIBILITY OF FRUIT CONTACTING GALV. HARDWARE CLOTH.)

COOPERATIVE EXTENSION WORK IN
AGRICULTURE AND HOME ECONOMICS
STATE OF TENNESSEE
UNIVERSITY OF TENNESSEE
AND
UNITED STATES DEPARTMENT OF AGRICULTURE COOPERATING

FRUIT DRIER
ARK. '74 6202 SHEET 3 OF 4

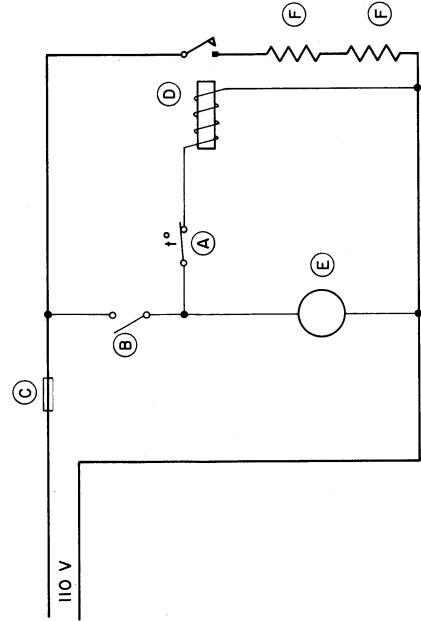
- (A) — HONEYWELL MOD. T675A THERMOSTAT, 55 / 175 ° F
- (B) — 120 V TOGGLE SWITCH
- (C) — IN-LINE FUSE HOLDER W/ 20A FUSE
- (D) — DAYTON No. 5X850 RELAY
- (E) — DAYTON MOD. 2C781 BLOWER
- (F) — 1 KW-110 V CONE TYPE HEATING ELEMENT W/ PORCELAIN BASE



ALTERNATE WIRING DIAGRAM

NOTE:

WIRING DIAGRAM SHOWN ON SHEET 3 REQUIRES A LINE VOLTAGE THERMOSTAT RATED AT 20 AMP. RESISTIVE. IF THIS TYPE OF THERMOSTAT IS NOT AVAILABLE, THE WIRING DIAGRAM SHOWN ON THIS SHEET MAY BE USED. THE OPERATION OF THIS DRYER REQUIRES A 110 V. - 20 AMP. CIRCUIT. TO PREVENT OVERLOADING OF CIRCUIT, DO NOT OPERATE DRYER ON A CIRCUIT WITH OTHER APPLIANCES.



SCHEMATIC