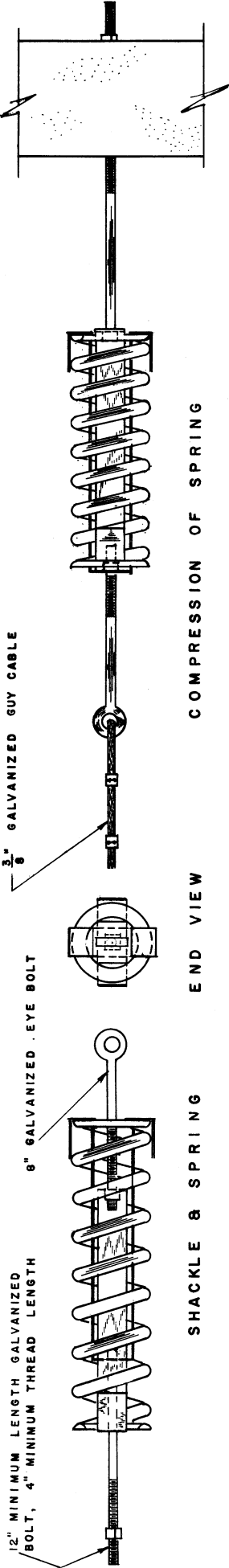


12" MINIMUM LENGTH GALVANIZED BOLT, 4" MINIMUM THREAD LENGTH

6" GALVANIZED EYE BOLT

3/8" GALVANIZED GUY CABLE



SHACKLE & SPRING

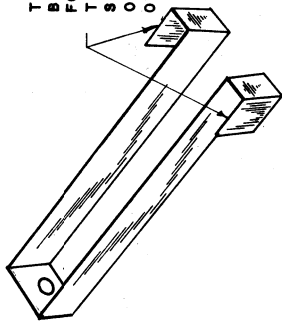
END VIEW

COMPRESSION OF SPRING

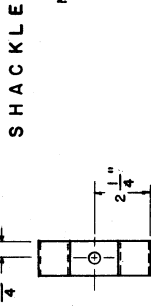
NOTE: SHACKLES SHOULD NOT BE MADE TILL AFTER SPRINGS ARE SECURED

NOTE: 1/2" GALVANIZED EYE BOLTS FOR USE ON END POSTS

NOTE: USE CONCRETE POST OR 6" TOP DIAMETER PRESSURE TREATED POST

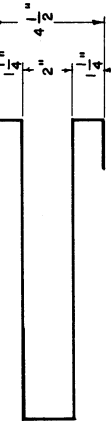


THE LEG OF SHACKLE SHOULD BE LONG ENOUGH TO COMPENSATE FOR THE SHAPE OF THE SPRING. TWO SHACKLES REQUIRED PER SPRING. SECOND SHACKLE MUST BE FORMED OVER SPRING END AFTER INSTALLATION OF THE FIRST SHACKLE.

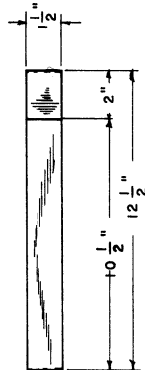


SHACKLE

END VIEW

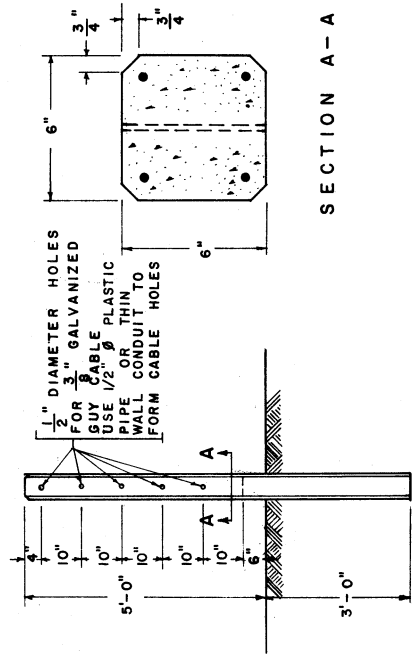


FRONT VIEW



TOP VIEW

NOTE: OUTSIDE DIAMETER OF AUTOMOBILE SPRING FROM SALVAGE SHOULD BE A MINIMUM OF 4"

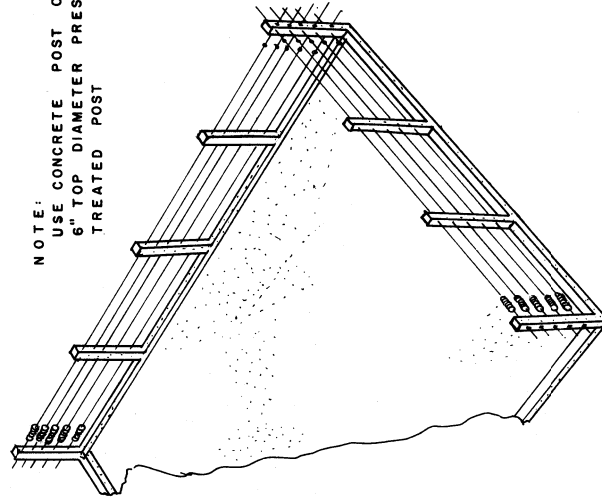


SECTION A-A

NOTE: 3/4" (3/8") RE-BARS PLACED IN THE CORNERS AND COVERED WITH A MINIMUM OF 3/4" OF CONCRETE AT ALL POINTS.

THE LARGEST SIZE AGGREGATE SHOULD BE 1/2"

BEVEL CORNERS BY PLACING 1/2" TRIANGULAR STRIP IN FORM



PERSPECTIVE