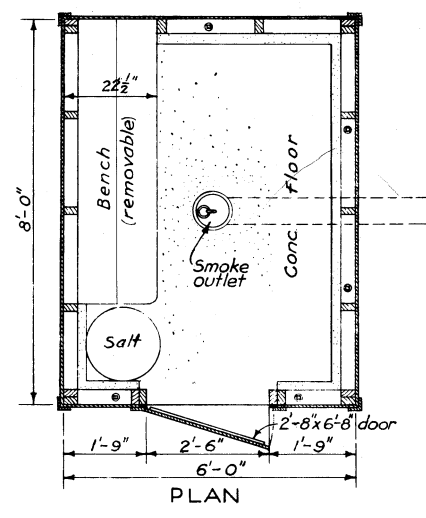
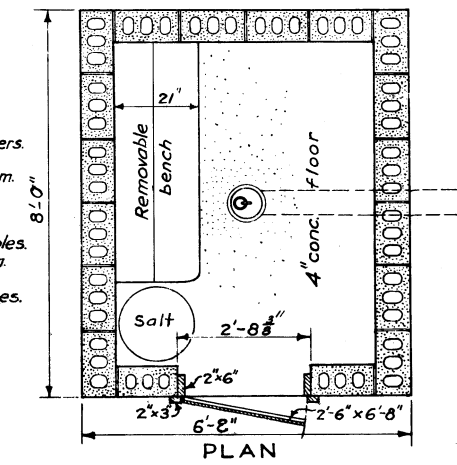
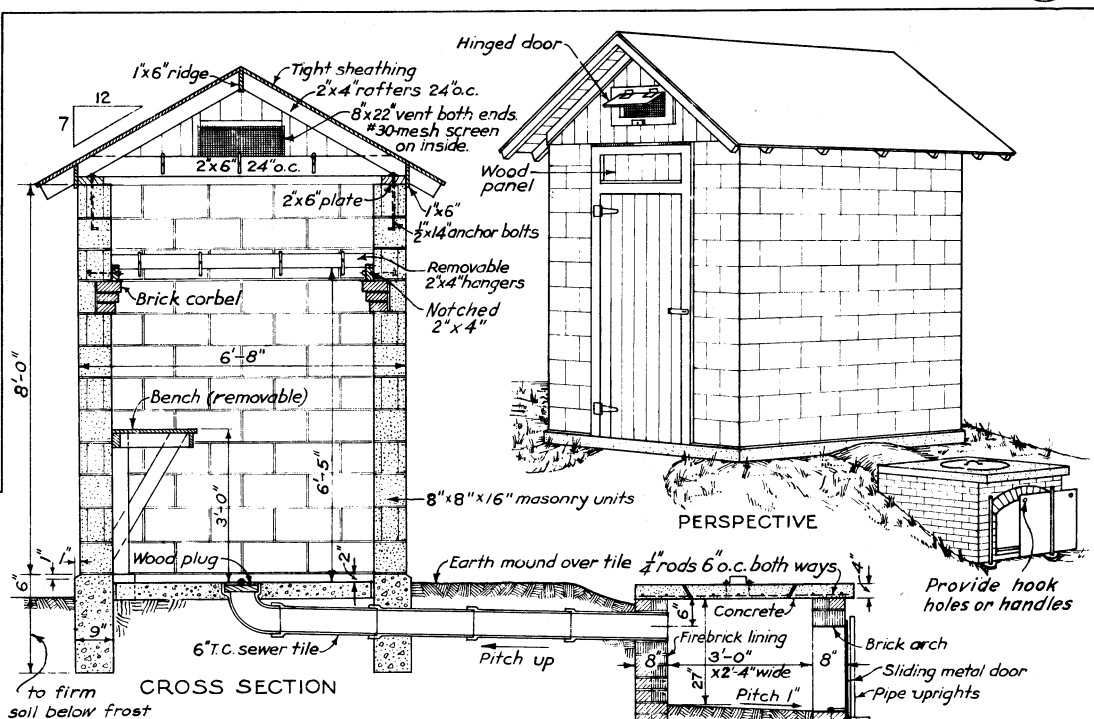


- BILL OF MATERIALS**
SMOKEHOUSE
- CONCRETE 1 : 3 : 5 mix
 10 bags cement, 1 cu. yd. sand, 1 1/2 cu. yds. gravel.
- LUMBER
 3 pieces 2" x 6" x 6'-0" cross ties.
 3 " 2" x 4" x 12'-0" header, bench and hangers.
 12 " 2" x 4" x 10'-0" sills, studs, and rafters.
 23 " 2" x 4" x 8'-0" " " plates, and hangers.
 2 " 1" x 10" x 8'-0" bench and vent doors.
 2 " 1" x 6" x 10'-0" ridge and trim.
 2 " 1" x 6" x 7'-0" door battens.
 6 " 1" x 4" x 10'-0" corner boards and trim.
 6 " 1" x 4" x 8'-0" trim.
 6 " 1" x 6" x 7'-0" T. & G. boards for door.
 275 ft. B.M. 6" drop siding.
 120 ft. B.M. roof sheathing.
 Roofing or asphalt shingles to cover 100 sq. ft. roof area.
- MISCELLANEOUS
 7- 1/2 x 12 anchor bolts, with nuts and washers.
 1 pair 8" Tee hinges, 1 safety hasp.
 2- pair 2' x 2" hinges for vent doors.
 1- piece metal flashing - 6' x 40"
 4 lin. ft. #30-mesh wire screen - 10" wide.
 4 lengths 6" T.C. sewer pipe, 1- 6" 90° T.C. elbow.
 Nails, hanging hooks, and paint not included.
- FIREBOX**
 CONCRETE 1 : 2 : 3 mix.
 6 bags cement, 1/2 cu. yd. sand, 3/4 cu. yd. broken hard brick, gravel or stone, (brick more heat resistant).
- MISCELLANEOUS
 10 lin. ft. 6' x 6" No. 9 wire fabric 30" wide.
 6 pieces 1/2" steel rods 42" long.
 10 " 1/2" " " 32"
 2 " 1/2" pipe 36" long.
 1- piece 24" x 32" metal, sliding door.



- BILL OF MATERIALS**
SMOKEHOUSE
- CONCRETE AND MORTAR.
 Concrete 1 : 3 : 5 mix. Mortar 1 : 3 + 10% lime.
 14 bags cement, 1 1/2 cu. yds. sand, 2 cu. yds. gravel
 65 lbs hydrated lime.
- 142 8" x 8" x 16" smooth face masonry units.
 12 8" x 4" x 16" " " " "
 2 8" x 4" x 8" " " " "
 14 8" x 8" x 8" " " half " "
 52 8" x 8" x 16" " " corner " "
 12 8" x 8" x 16" " " Jamb " "
 12 8" x 8" x 8" " " half " "
- 100 common brick
- LUMBER
 4 pieces 2" x 6" x 8'-0" plates and door jambs.
 2" x 6" x 7'-0" " " cross ties.
 2" x 4" x 10'-0" rafters, gable-end studs.
 2" x 4" x 6'-0" bench and removable hangers.
 2" x 3" x 8'-0" door casing.
 9 " 1" x 6" x 10'-0" " battens, ridge, trim.
 9 " 1" x 4" x 10'-0" " " " "
 1 " 1" x 12" x 6'-0" bench.
 1 " 1" x 10" x 10'-0" " and vent doors.
 120 ft. B.M. roof sheathing. 56 ft. B.M. 1 1/2" T & G. door, gables.
 Roofing or asphalt shingles to cover 100 sq. ft. roof area.
- MISCELLANEOUS
 8- 1/2 x 14 anchor bolts. 1 pr. 8" Tee hinges. 1 pr. 2' x 2" hinges.
 6 x 38" metal flashing. 4 lin. ft. #30 mesh screen 10" wide.
 Nails, hanging hooks, and paint not included.
- FIREBOX**
 7 bags cement, 1/2 cu. yd. sand, 3/4 cu. yd. gravel
 450 common brick, 90 firebrick.
 9- 1/2 steel rods 40" long. 6- 1/2 steel rods 48" long.
 2 pieces 1/2" pipe 36" long.
 1 metal sliding door 24" x 32".



COOPERATIVE EXTENSION WORK IN
 AGRICULTURE AND HOME ECONOMICS
 STATE OF TENNESSEE
 UNIVERSITY OF TENNESSEE
 AND
 UNITED STATES DEPARTMENT OF AGRICULTURE COOPERATING

SMOKE HOUSE

USDA '65	EX. 5695	SHEET 1 OF 1
----------	----------	--------------